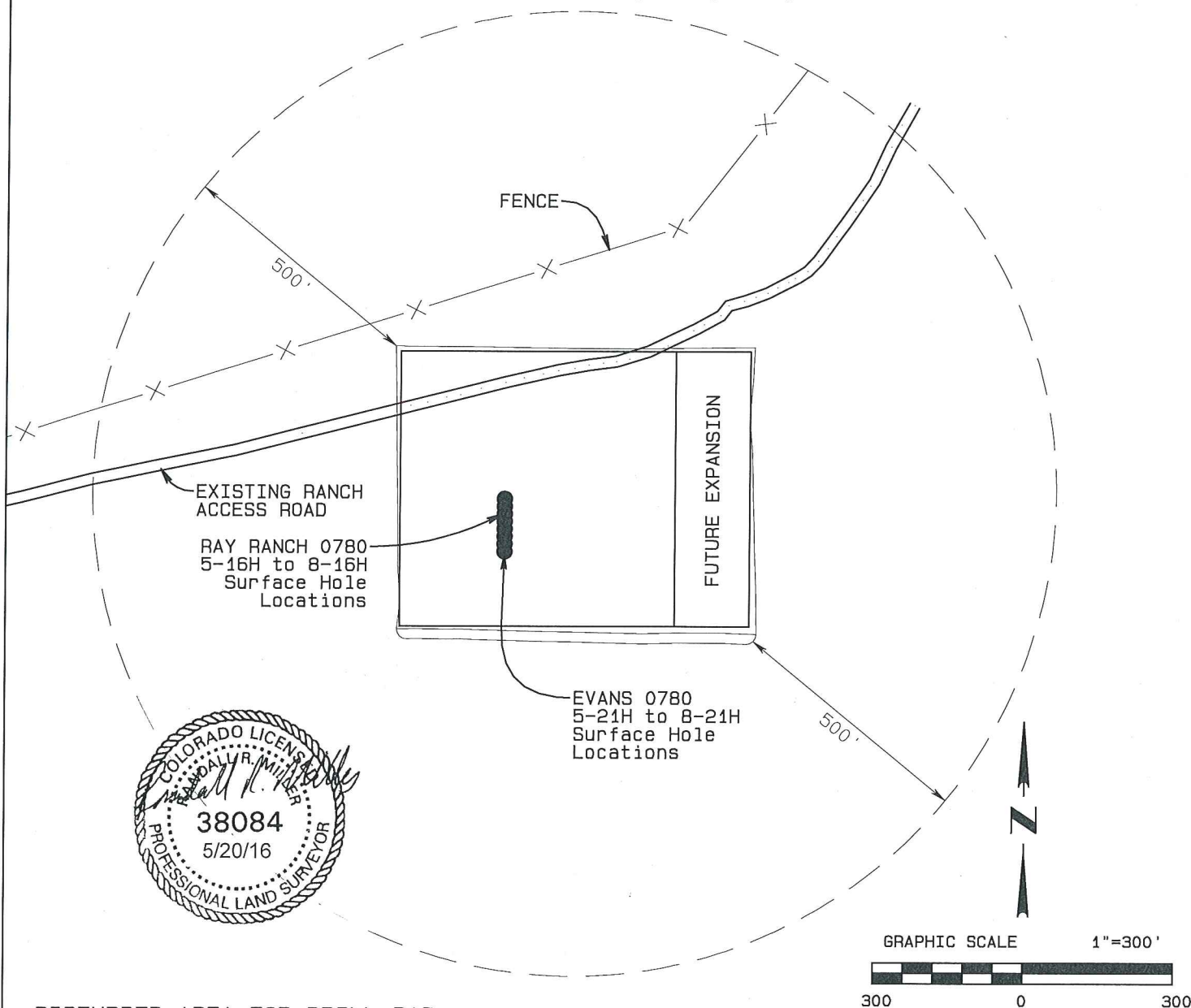


# SandRidge Exploration & Production, LLC

## LOCATION OVERVIEW DRAWING

RAY RANCH 0780 S16 PAD

NE1/4SW1/4 of SECTION 16, T7N, 80W, 6th PM



### DISTURBED AREA FOR DRILL PAD

#### BEFORE RECLAMATION:

PAD TOTAL = (700' x 550') / 43560 = 8.84 Ac  
NEW ACCESS ROAD = (22' x 1440') / 43560 = 0.73 Ac  
TOTAL = 9.57 Ac

#### AFTER RECLAMATION:

PAD TOTAL = (700' x 550') / 43560 = 8.84 Ac  
NEW ACCESS ROAD = (22' x 1440') / 43560 = 0.73 Ac  
TOTAL = 9.57 Ac

### CULTURAL FEATURE TABLE FROM PROD FACILITIES

| EXISTING FEATURE        | DIRECTION  | LENGTH |
|-------------------------|------------|--------|
| BUILDING                | N 23.72° W | 3476'  |
| BUILDING UNIT           |            | +5280' |
| HIGH OCC. BUILDING UNIT |            | +5280' |
| DESIGNATED OUTSIDE AREA |            | +5280' |
| PUBLIC ROAD             |            | +5280' |
| POWER LINE              | S 60.62° W | 1044'  |
| RAILROAD                |            | +5280' |
| PROPERTY LINE           | S 0.47° E  | 1261'  |

### PLANT COMMUNITY

- ☐ DISTURBED GRASSLAND
- ☒ NATIVE GRASSLAND
- ☐ SHRUB LAND
- ☐ PLAINS RIPARIAN
- ☐ MOUNTAIN RIPARIAN
- ☐ FOREST LAND
- ☐ WETLANDS AQUATIC
- ☐ ALPINE
- ☐ OTHER (Describe):

### CURRENT LAND USE

- ☐ CROP LAND
- ☒ IRRIGATED RANGELAND
- ☐ DRY LAND
- ☐ IMPROVED PASTURE
- ☐ HAY MEADOW
- ☐ NON-CROP LAND
- ☐ INDUSTRIAL
- ☐ TIMBER
- ☐ RECREATIONAL
- ☐ OTHER (Describe)
- ☐ SUBDIVIDED
- ☐ COMMERCIAL
- ☐ RESIDENTIAL
- ☐ CRP

### FUTURE LAND USE

- ☐ CROP LAND
- ☒ IRRIGATED RANGELAND
- ☐ DRY LAND
- ☐ IMPROVED PASTURE
- ☐ HAY MEADOW
- ☐ NON-CROP LAND
- ☐ INDUSTRIAL
- ☐ TIMBER
- ☐ RECREATIONAL
- ☐ OTHER (Describe)
- ☐ SUBDIVIDED
- ☐ COMMERCIAL
- ☐ RESIDENTIAL
- ☐ CRP