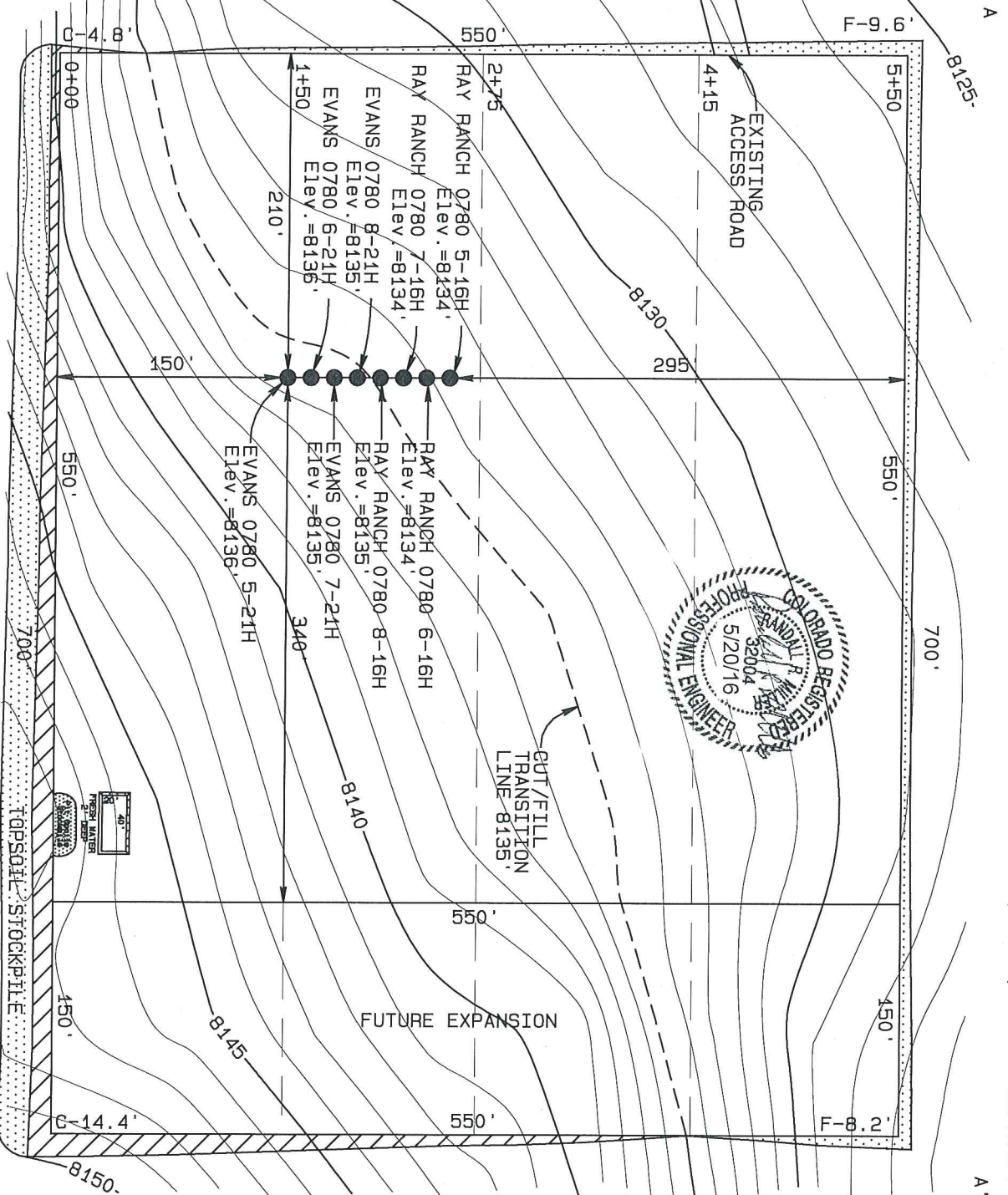


# SandRidge Exploration & Production, LLC

CONSTRUCTION LAYOUT  
RAY RANCH 0780 S16 PAD  
NE1/4SW1/4 of SECTION 16, T7N, 80W, 6th PM

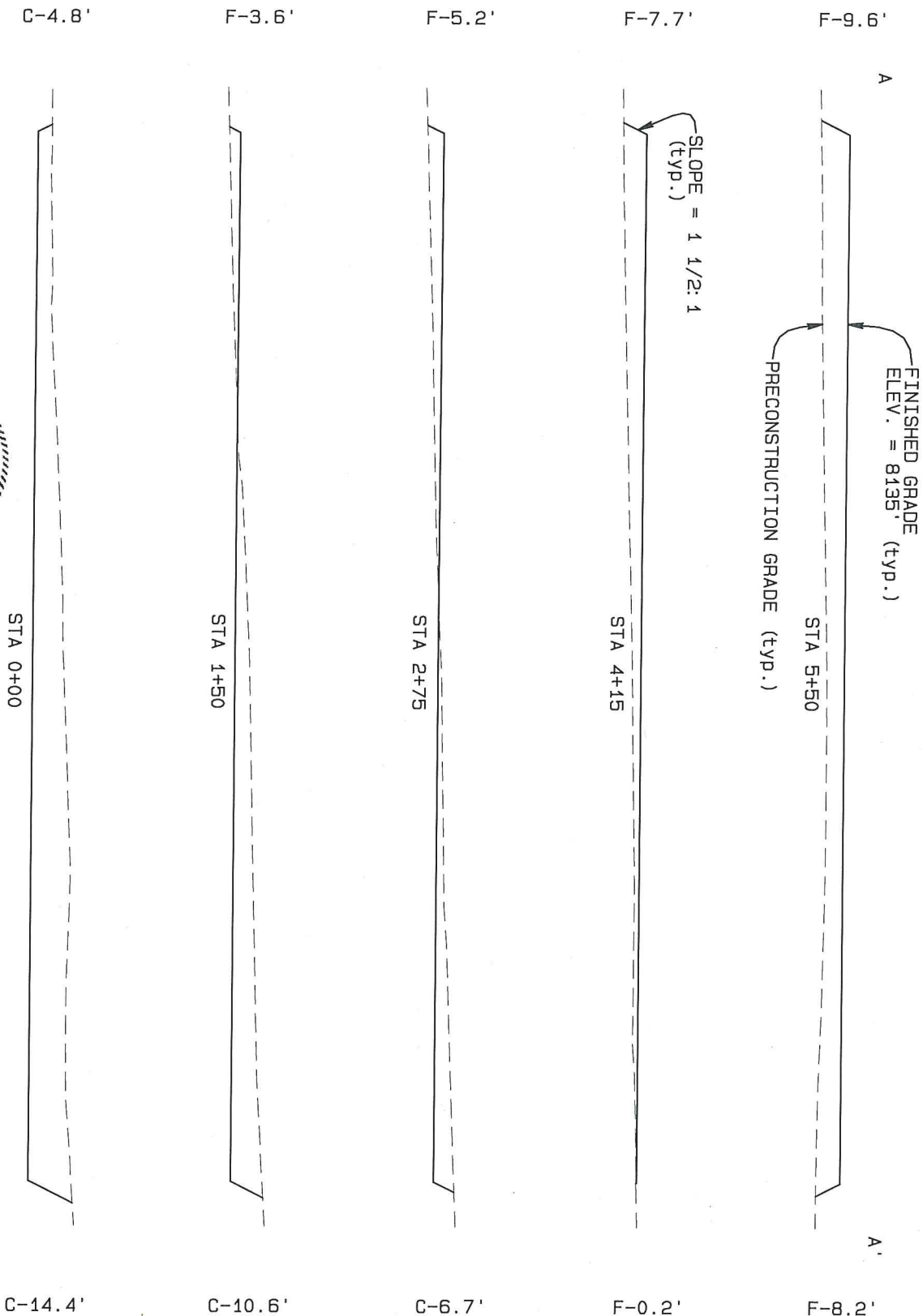


Earthwork:  
Total Excavation - 40150 Cu. Yd.  
Pad Fill - 31370 Cu. Yd.  
Topsoil Stockpile - 8780 Cu. Yd.  
Pad Area - 8.84 acre

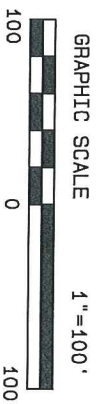
Final Pad Elev. = 8135'.  
Elev. for Surface Locations  
are at Ungraded Ground

# SandRidge Exploration & Production, LLC

CONSTRUCTION LAYOUT CROSS SECTION  
RAY RANCH 0780 S16 PAD  
NE1/4SW1/4 of SECTION 16, T7N, 80W, 6th PM



Vertical Exag = 2 Times  
Final Pad Grade = 8135'



NORTH PARK ENGINEERING & CONSULTING, INC.  
PO Box 395 Walden, CO 80480 970-723-3725