

Operator: Noble Energy
Well Name: Ottoson #4
Legal: NESW, Sec 12, T6N, R66W
Location: Weld County, CO
API: 05-123-12391

Wellbore History

Spud Date: 06/21/1985
 Surf Csg: 8.625", 24# @ 309'
 Prod Csg: 4.5", 11.6# @ 7290'
 TOC: 6,195' from Form 6
 Perfs: Codell: 7,198'-7,208'




Previous P&A Procedure

CIBP @ 7,100' w/2 sks
 Cut casing @ 6,004'
 Pmp 40 sx @ 6,000', stub plug
 Pmp 40 sx @ 1200'
 Pmp 40 sx @ 309', ½ in ½ out
 Pmp 10 sx @ surface

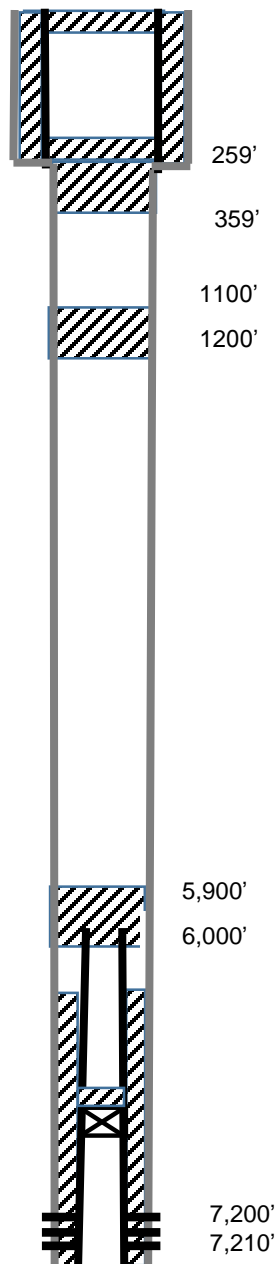
Proposed P&A Procedure

Mill cement and ensure well is clean to 450'
 Pmp 200 sx to surface (450'-0')

Key

-  Existing Cement Coverage
-  CIBP
-  Cement Pumped

Current



Proposed

