

**GAMMA RAY
CEMENT BOND
VDL**

Company **Southwestern Production Corporation**

Well **Kathlyn #1**

Field **Wattenberg**

County **Weld**

State **Colo.**

Location

**Sec-2, Twp-4N, Rge-67W
1980' FWL & 2160' FNL
SE 1/4 NW**

Other Services
perforate

Company

Well

Field

County

State

Perforament Datum
Log Measured From
Drilling Measured From

GL
NB
AB

Elevation
4730

KB 4740
O.S. 4750
GL 4750

Date

Run Number

Depth Driver

Depth Logger

Bottom Logged Interval

Top Log Interval

Open Hole Size

Type Fluid

Density / Viscosity

Max. Recorded Temp.

Estimated Cement Top

Time Well Ready

Time Logger on Bottom

Equipment Number

Location

Recorded By

Witnessed By

Drillpipe Record
Run Number
SA From

To
Size
Weight
From

To

Size
Weight
From

To

Size
Weight
From

To

Size
Weight
From

To

Size
Weight
From

To

Size
Weight
From

To

Size
Weight
From

To

Casing Record
Surface String
Prod. String
Production String
Liner

Size

Weight

Top

Bottom

Size

Weight

Top

Bottom

Size

Weight

Top

Bottom

Size

Weight

Top

Comments

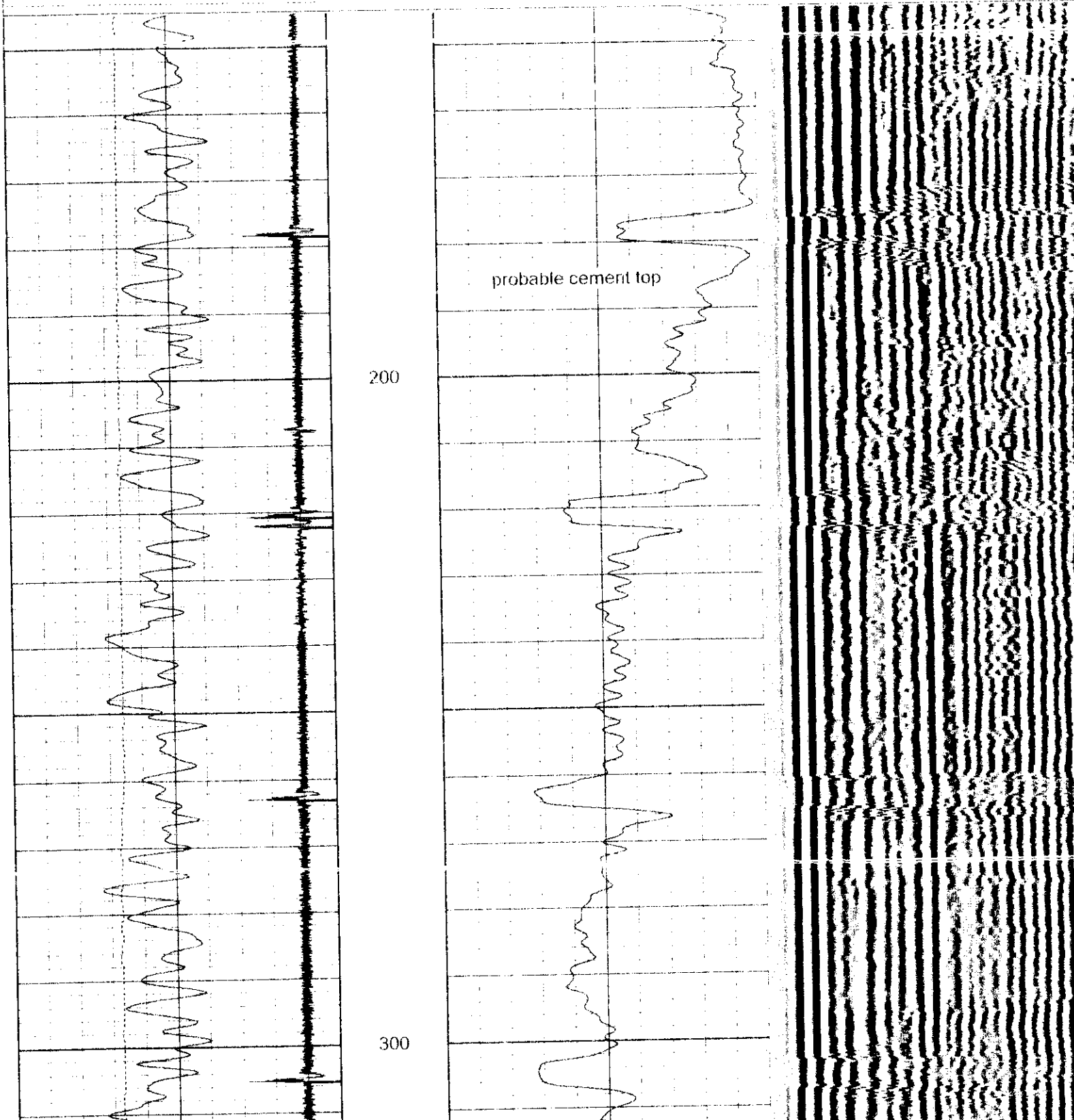
THANK-YOU FOR USING "NUEX" WIRELINE SERVICES INC. !!!

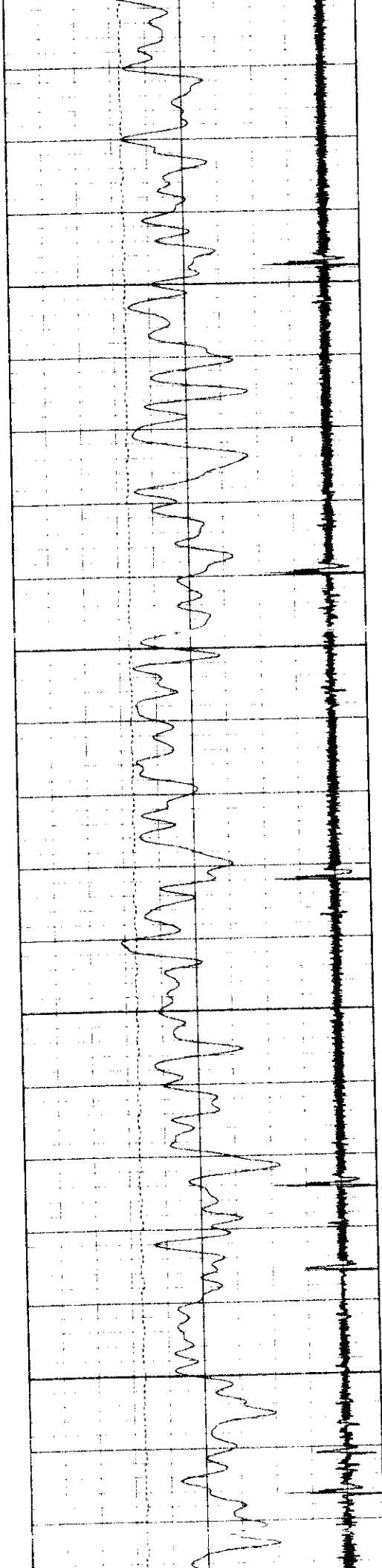
Full Page

All interpretations are opinions based on inferences from electrical or other measurements and we cannot and do not guarantee the accuracy or correctness of any interpretation, and we shall not, except in the case of gross or willful negligence on our part, be liable or responsible for any loss, costs, damages, or expenses incurred or sustained by anyone resulting from any interpretation made by any of our officers, agents or employees. These interpretations are also subject to our general terms and conditions set out in our current Price Schedule.

Database File swpkath1.db
 Dataset Pathname pass6
 Presentation Format cbl01.prs
 Dataset Creation Tue Nov 28 15:33:42 2000 by Log VER_5.4
 Charted by Depth in Feet scaled 1:240

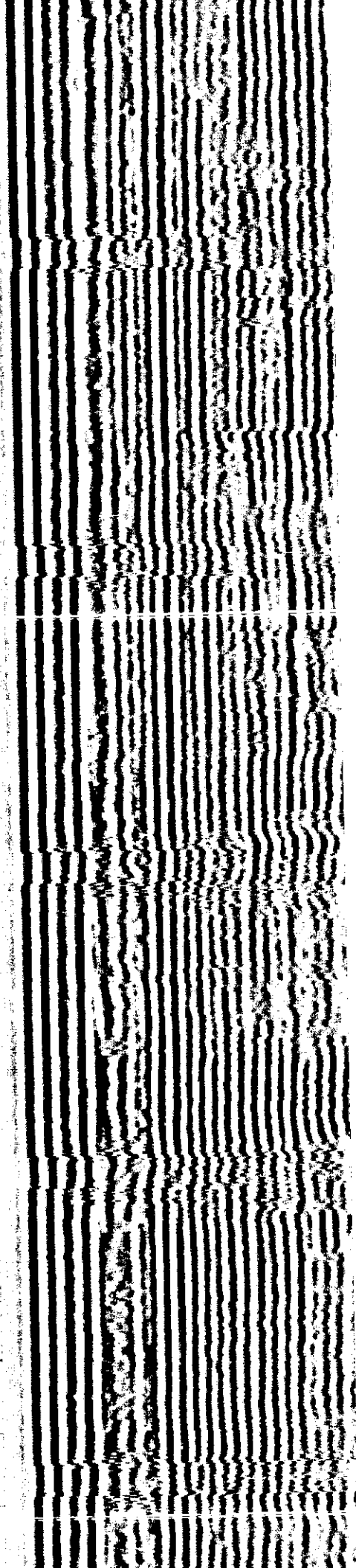
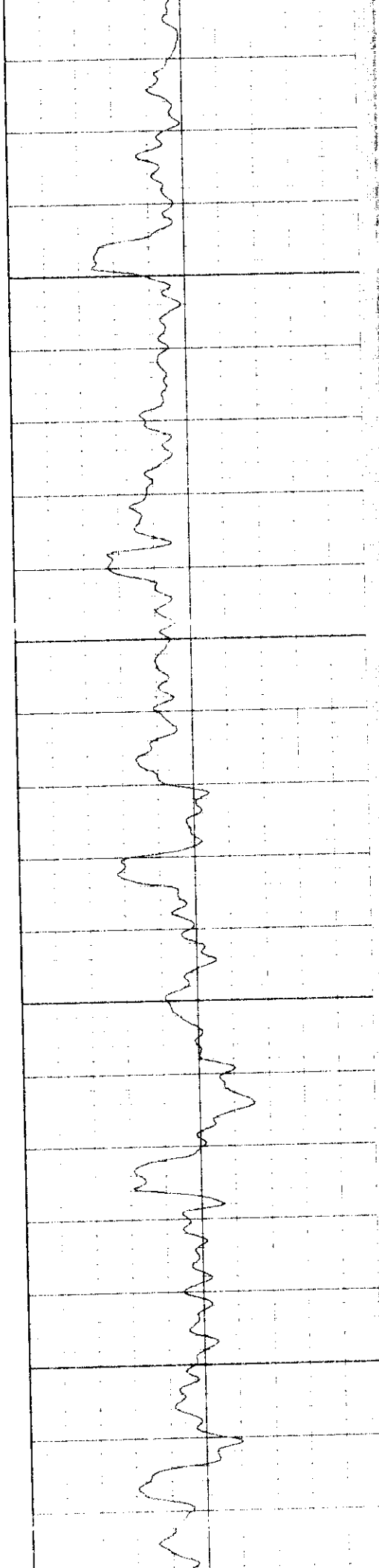
9	Collar Locator	-1	0	Amplified Amplitude (mV)	10 200	Variable Density	1200
0	Gamma Ray (GAPI)	150	0	Amplitude (mV)	100		
30	LSPD (ft/min)	230					

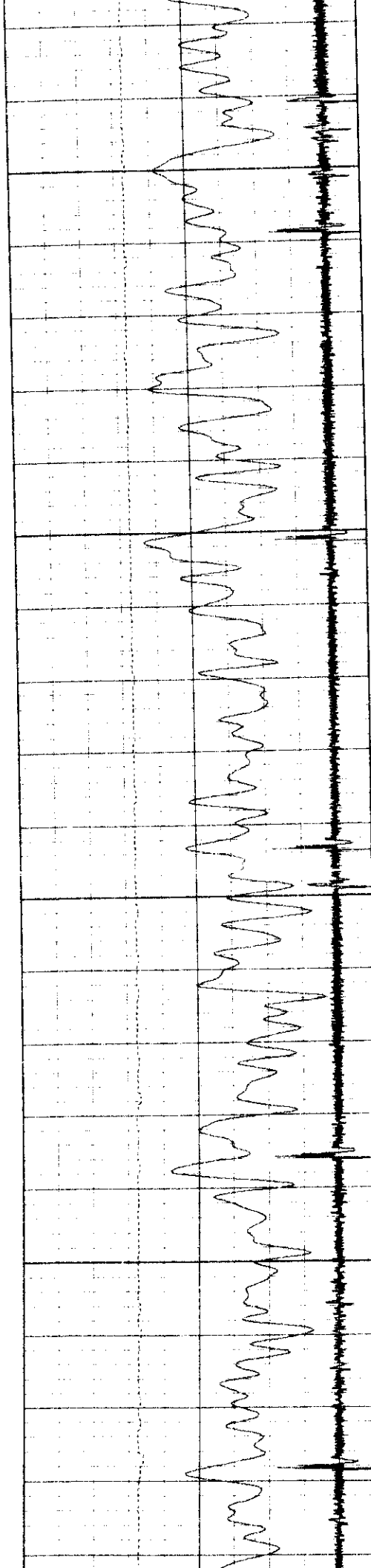




400

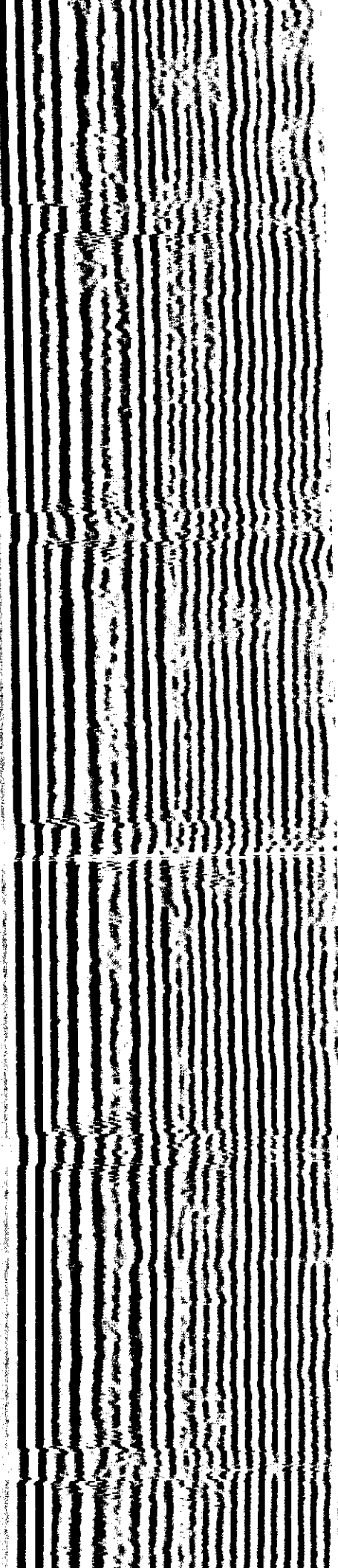
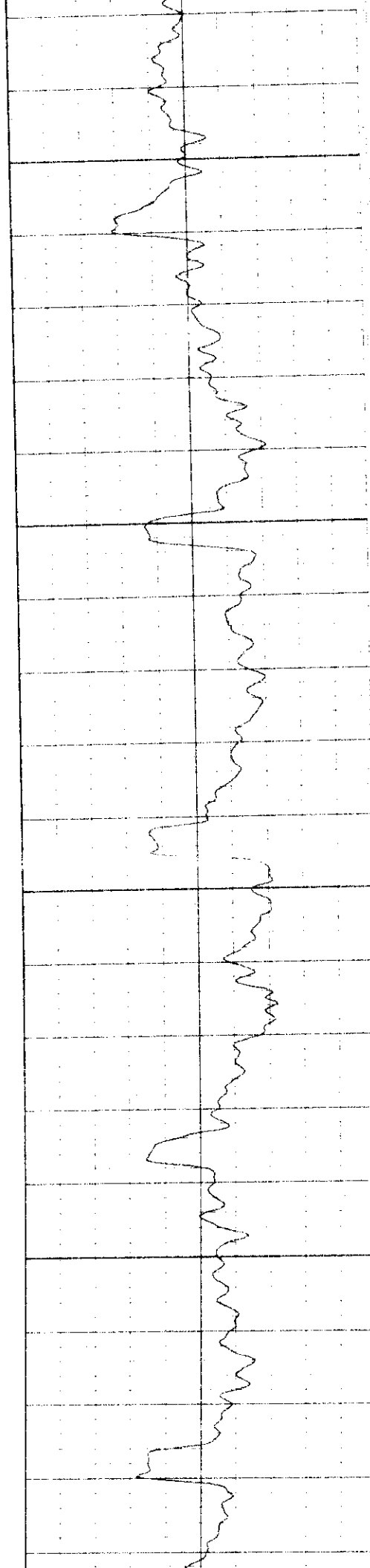
500

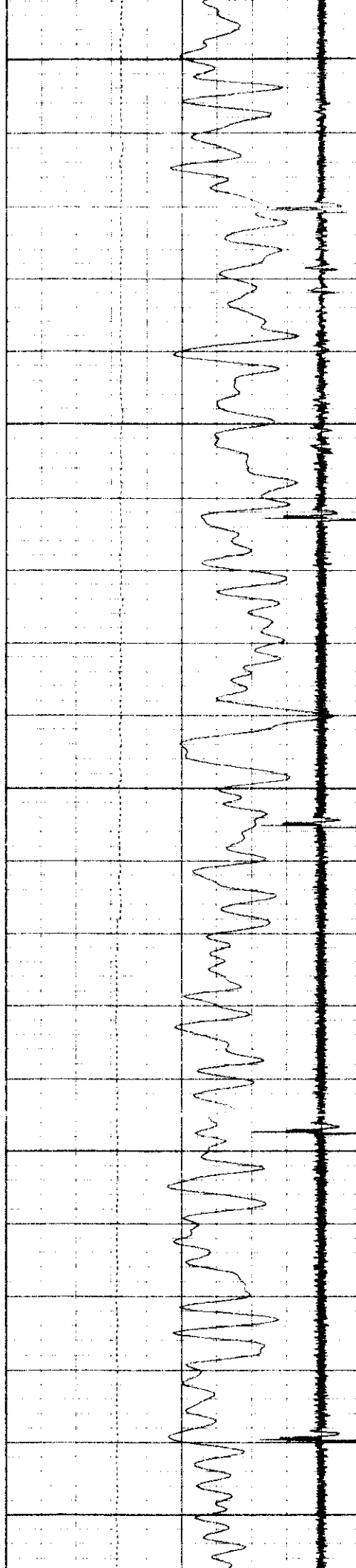




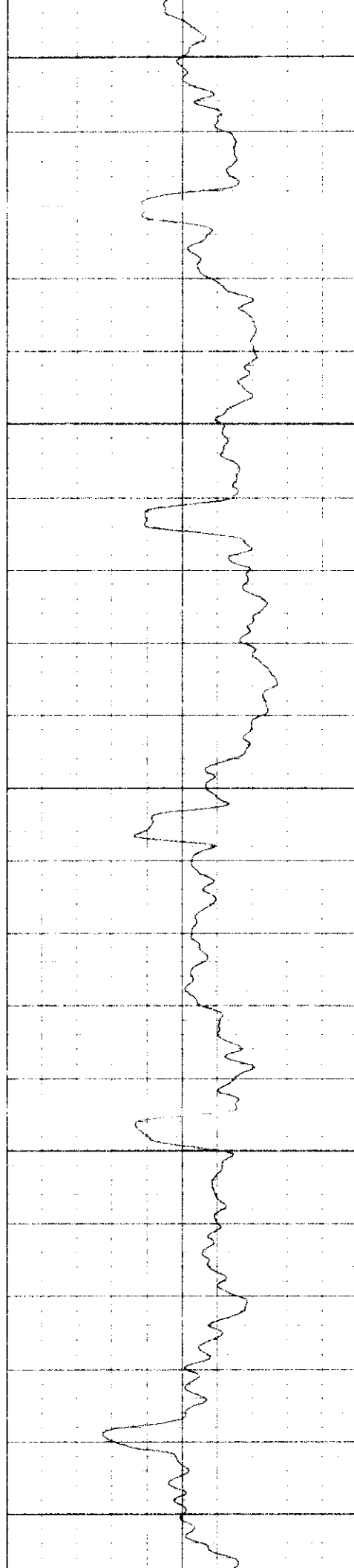
600

700

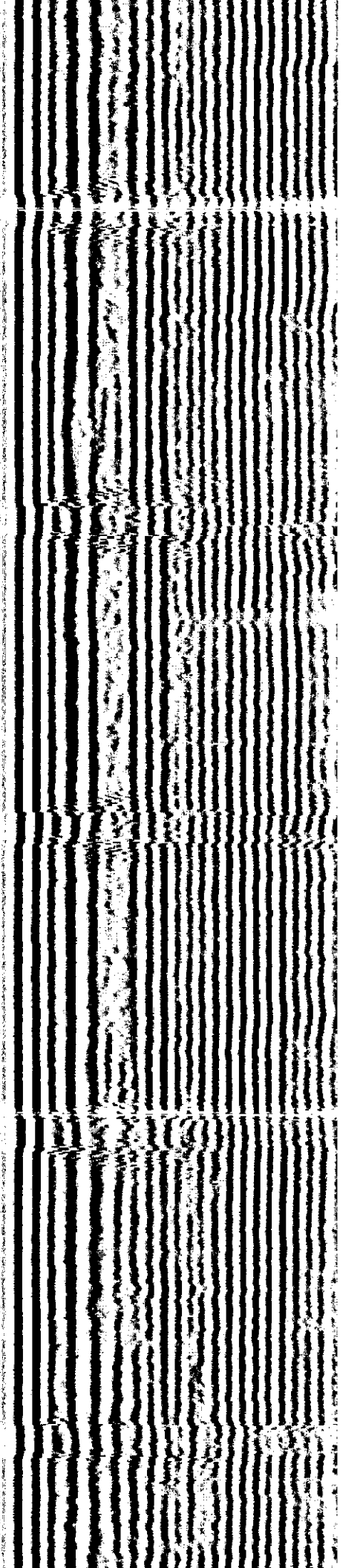


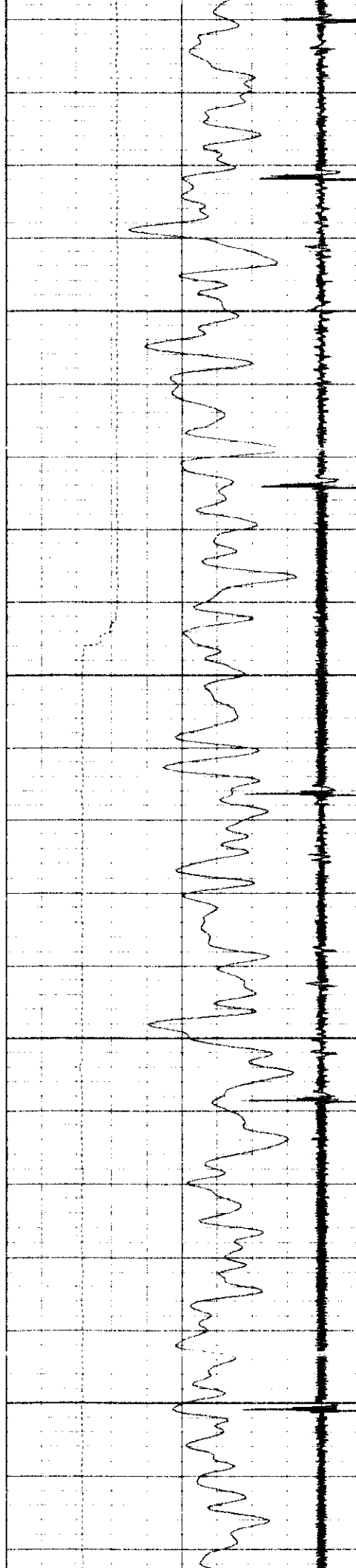


800



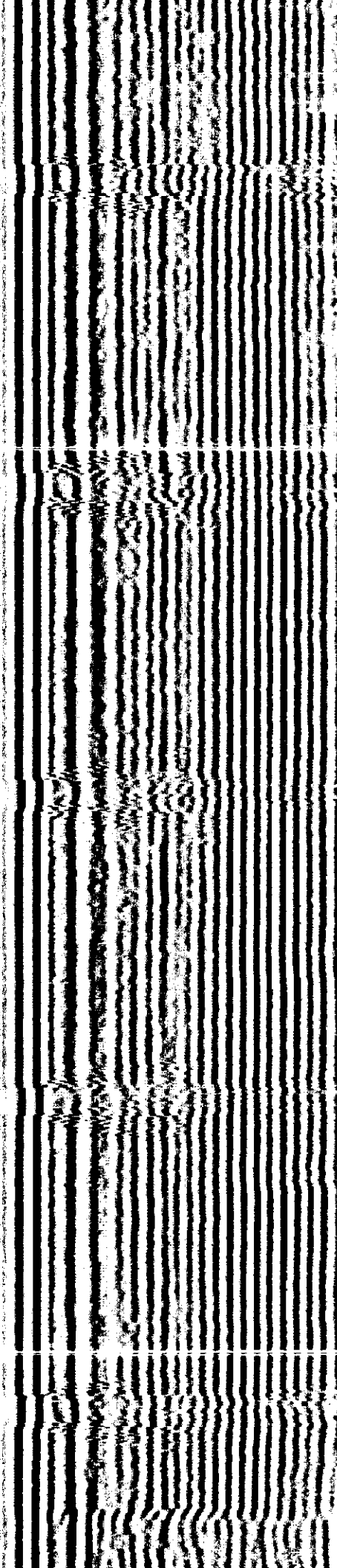
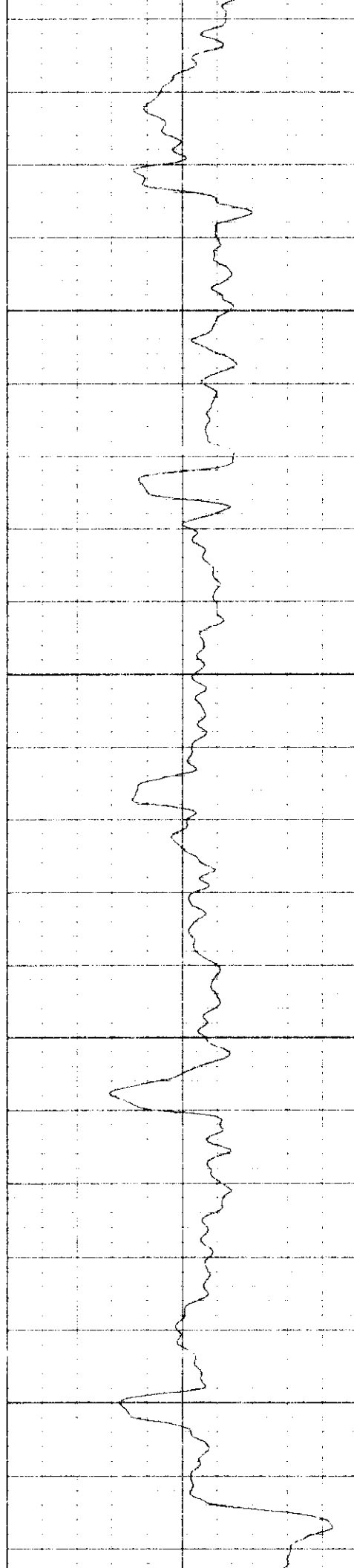
900

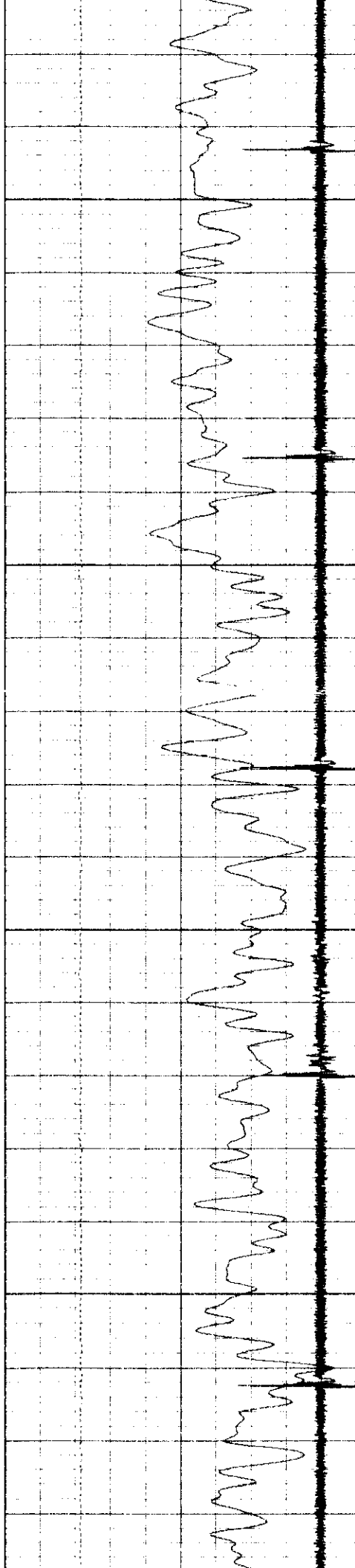




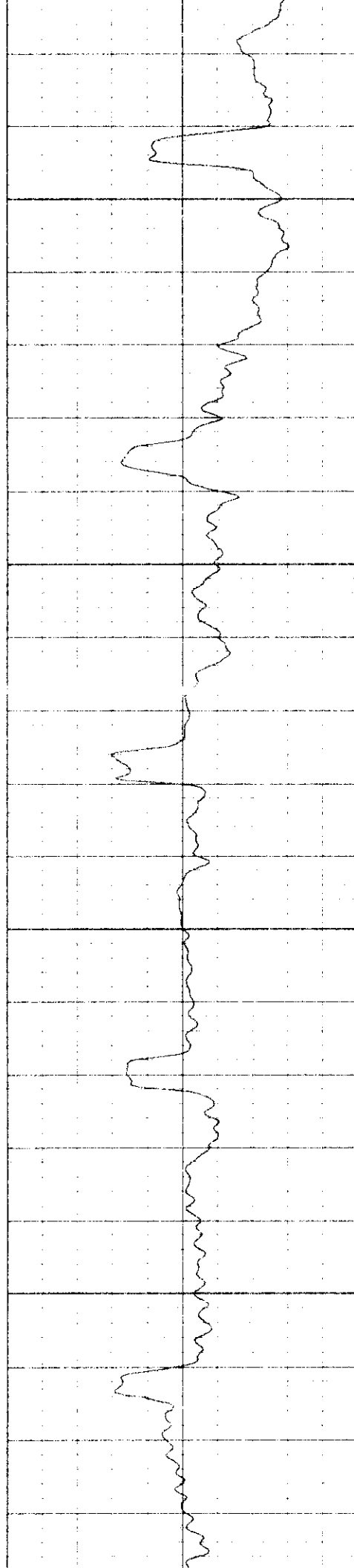
1000

1100

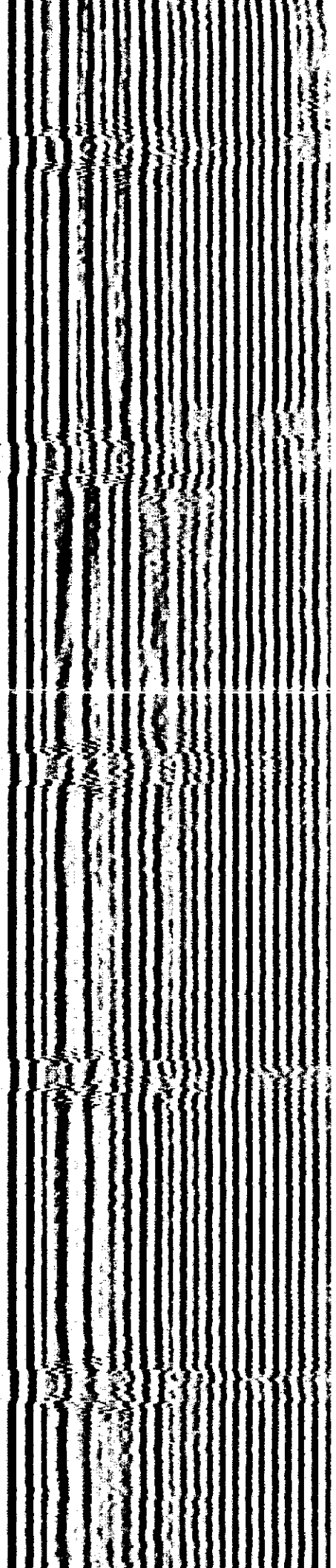


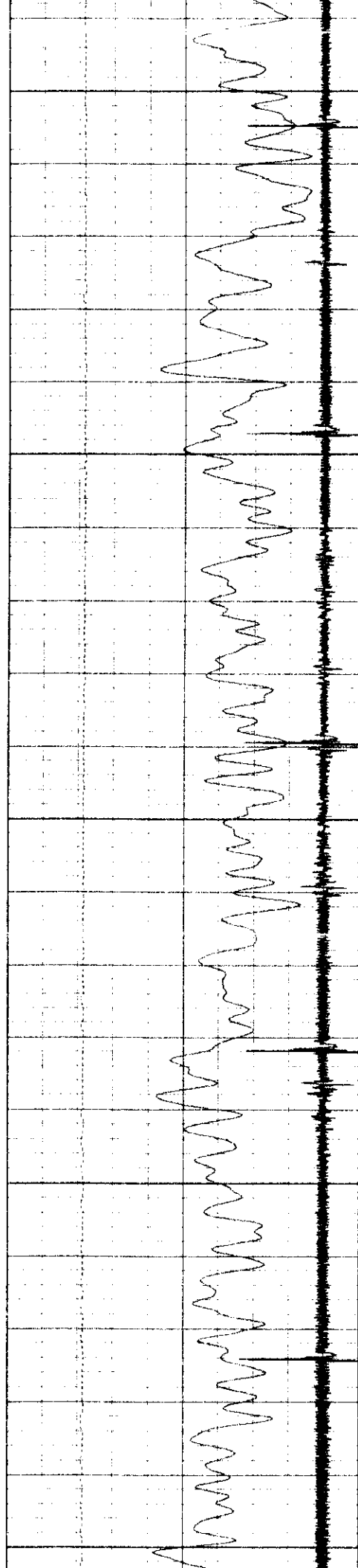


1200



1300

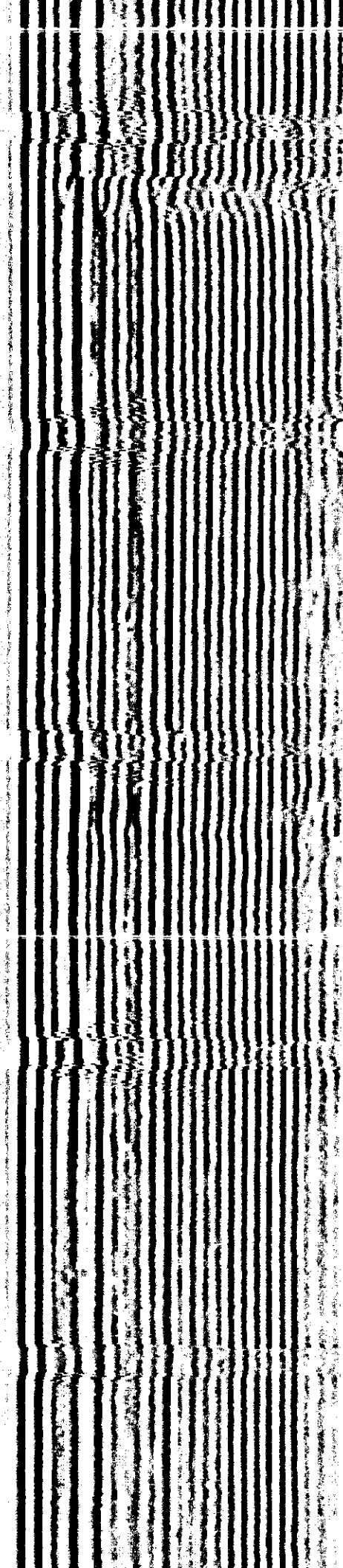
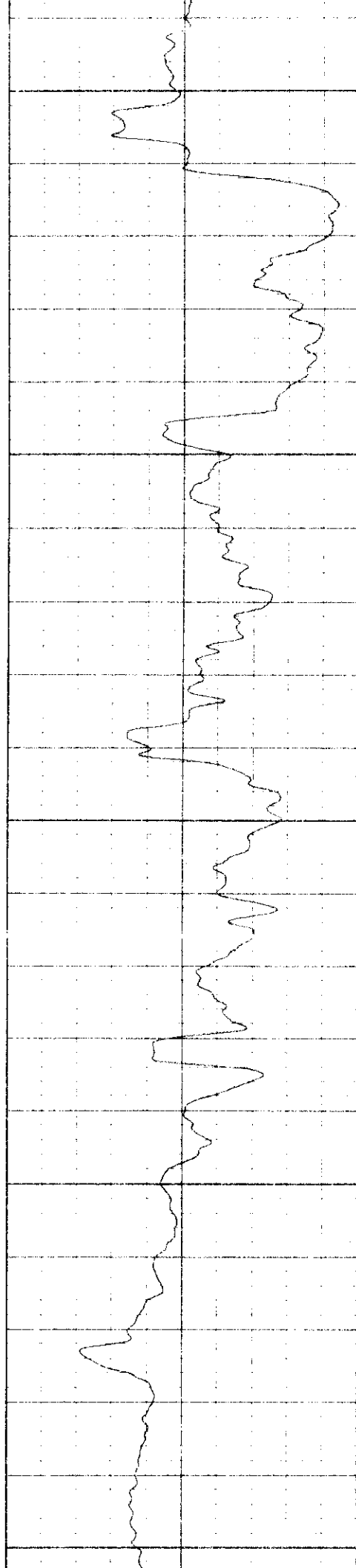


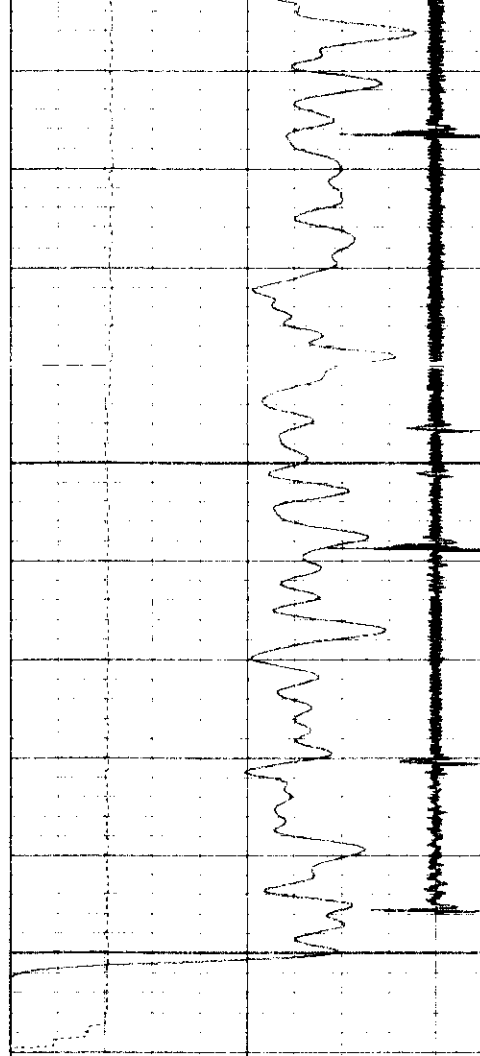


1400

1500

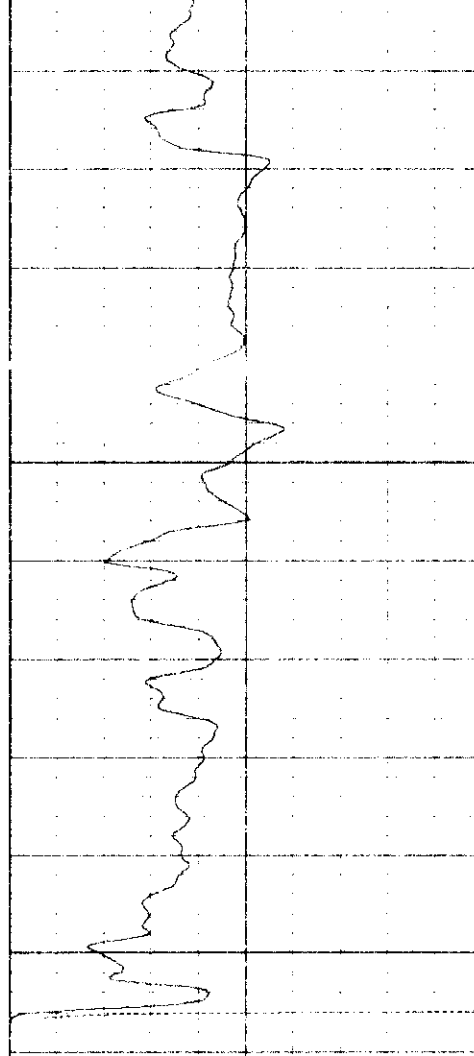
1600



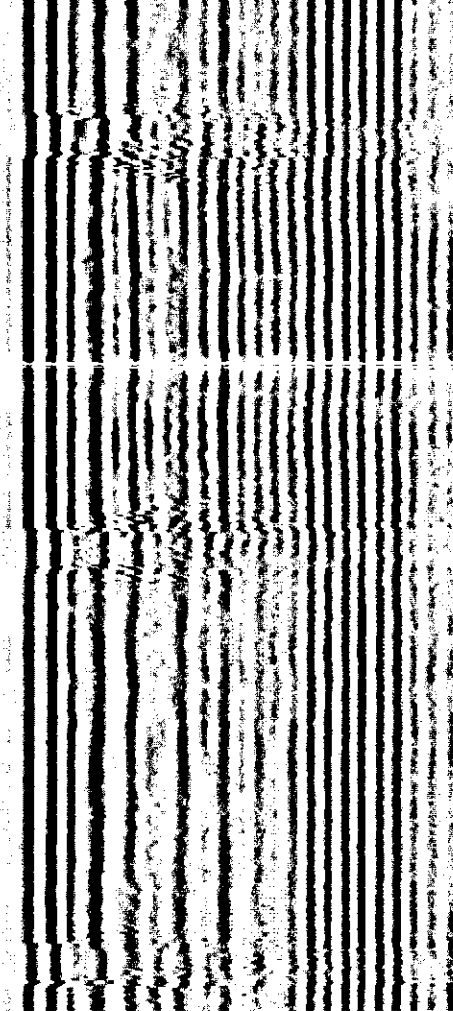


9	Collar Locator	-1
0	Gamma Ray (GAPI)	150
30	LSPD (ft/min)	230

1700



0	Amplified Amplitude (mV)	10 200
0	Amplitude (mV)	100



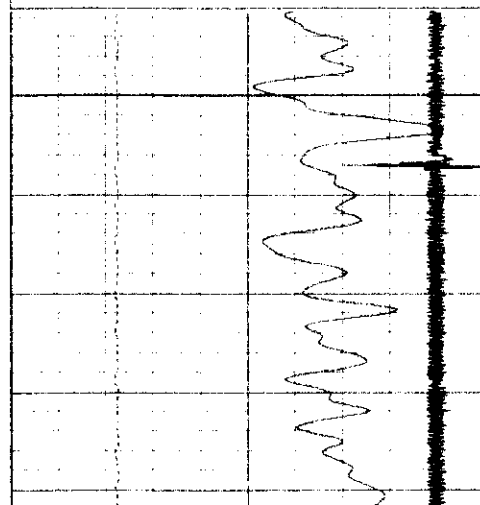
Variable Density 1200

Database File: swpkath1.db
Dataset Pathname: pass5
Presentation Format: cbl01.prs
Dataset Creation: Tue Nov 28 15:14:16 2000 by Log VER_5.4
Charted by: Depth in Feet scaled 1:240

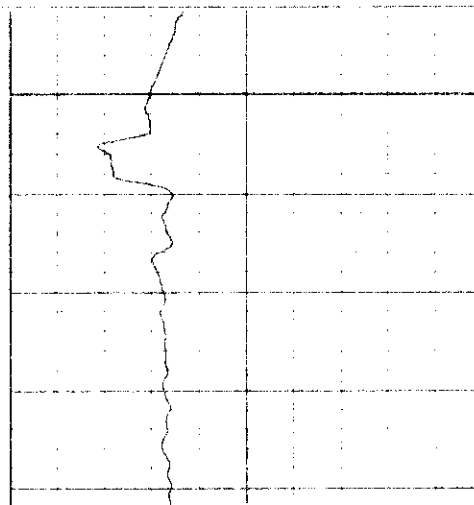
9	Collar Locator	-1
0	Gamma Ray (GAPI)	150
30	LSPD (ft/min)	230

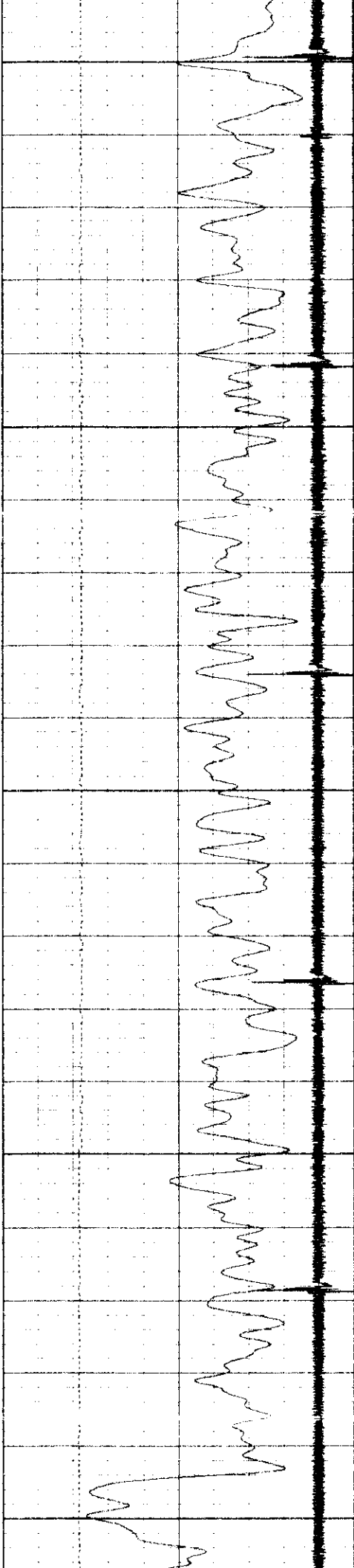
0	Amplified Amplitude (mV)	10 200
0	Amplitude (mV)	100

Variable Density 1200

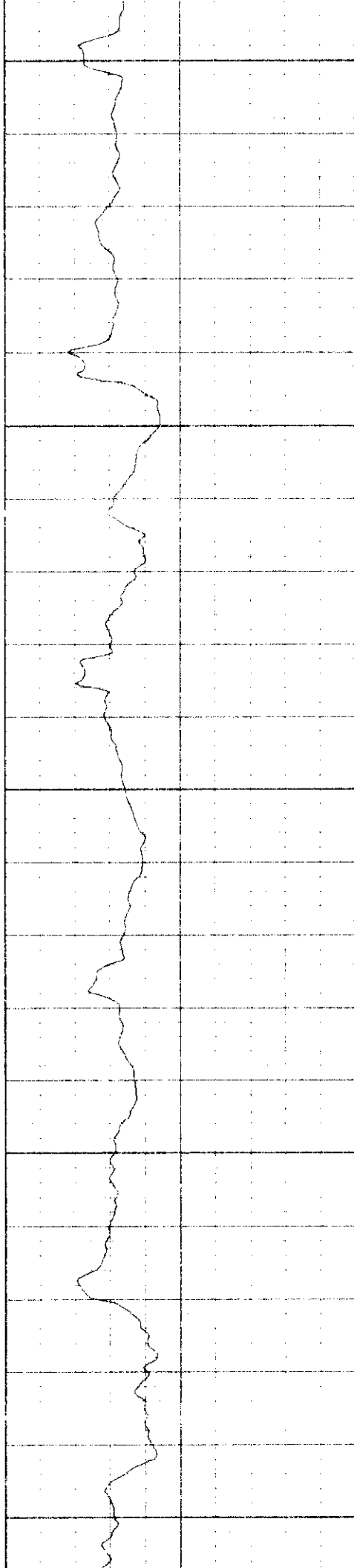


4400

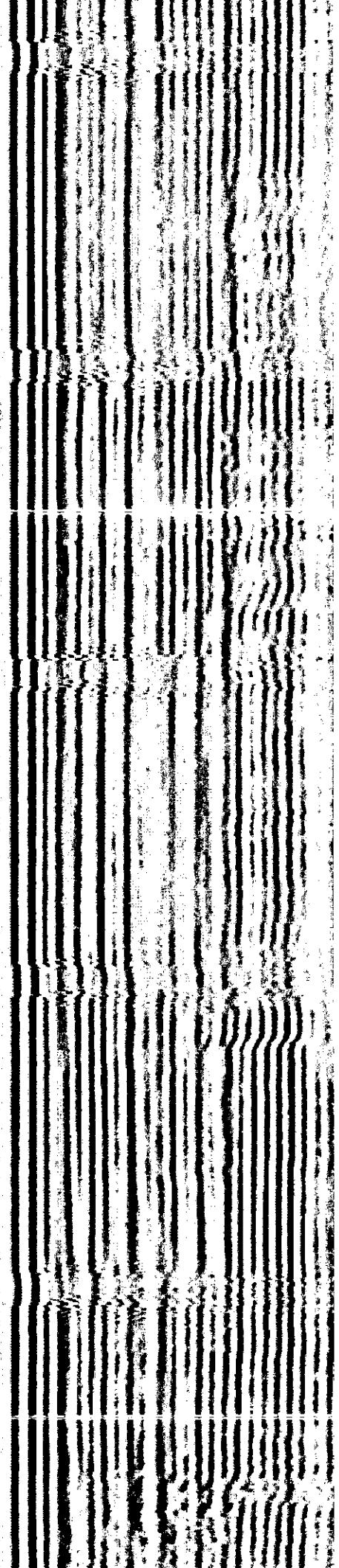


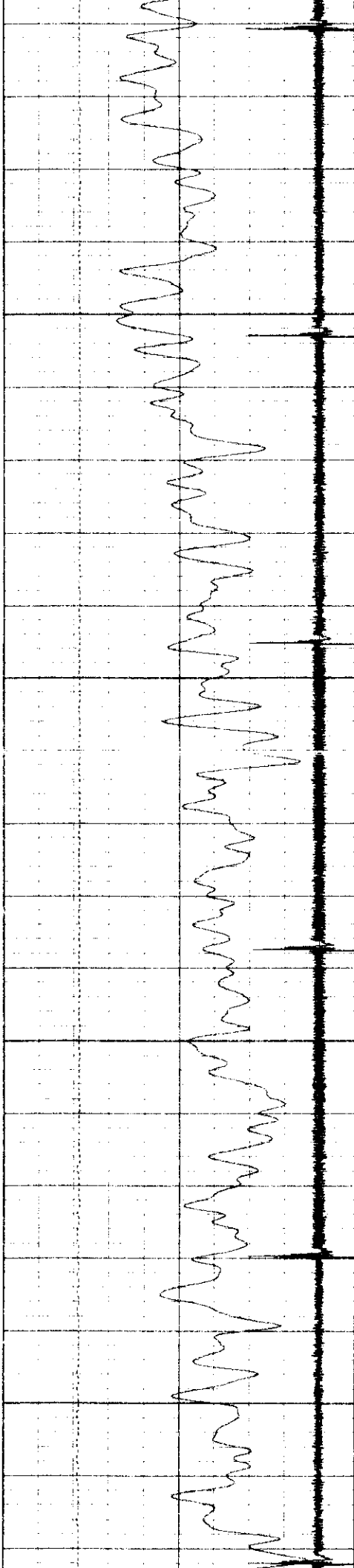


4500



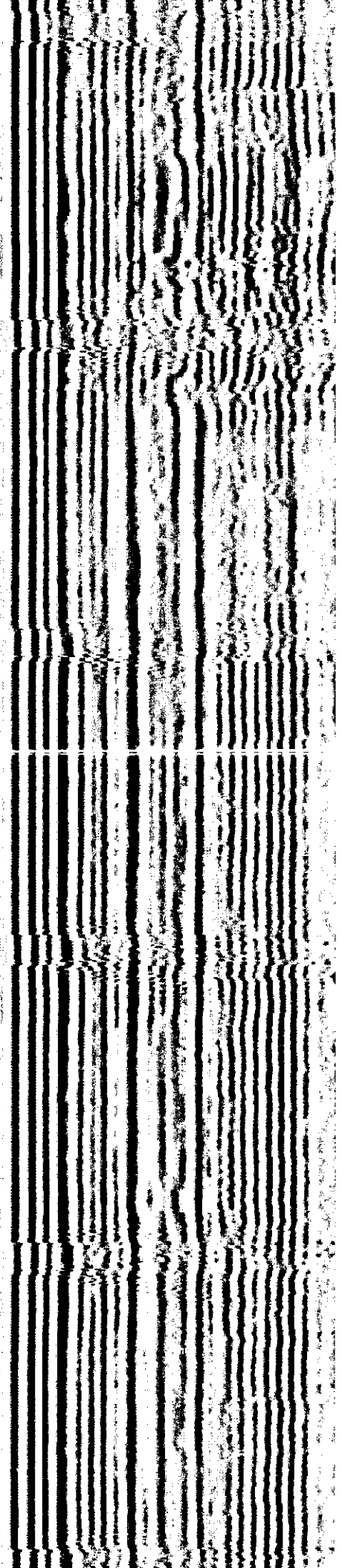
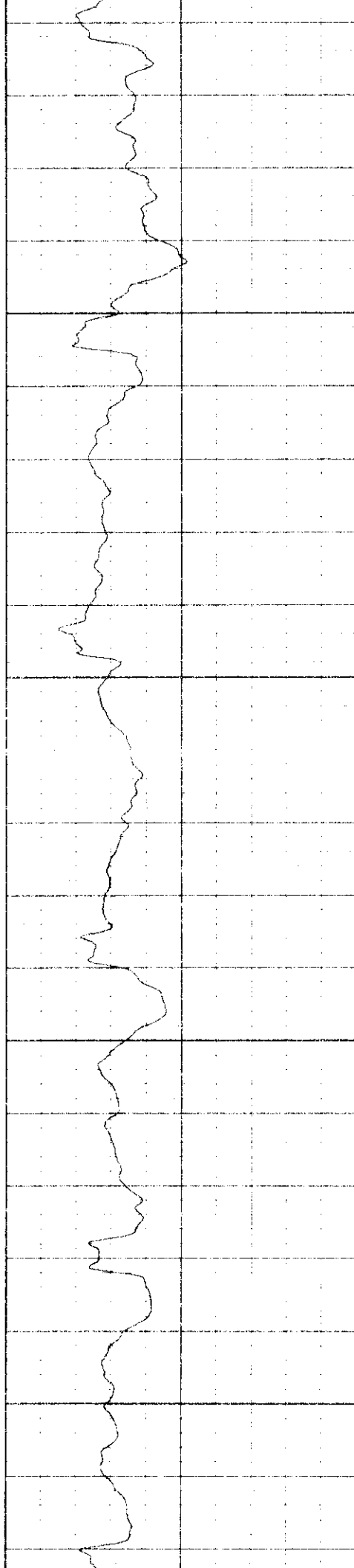
4600

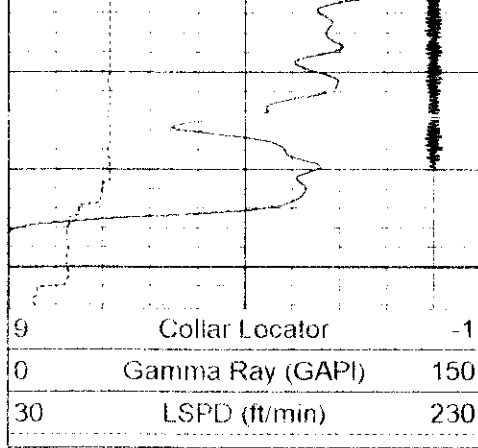




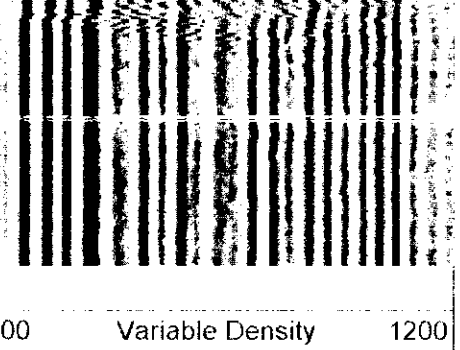
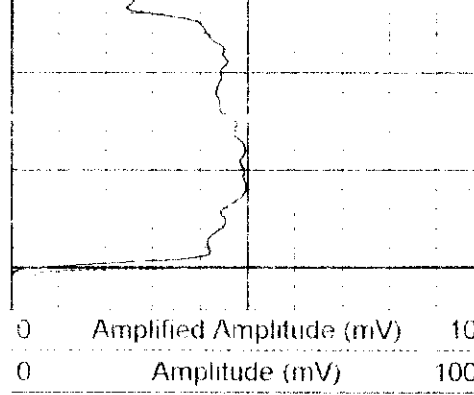
4700

4800

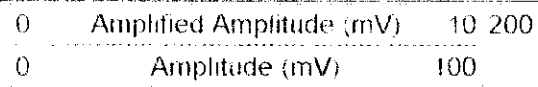
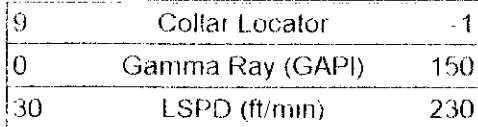




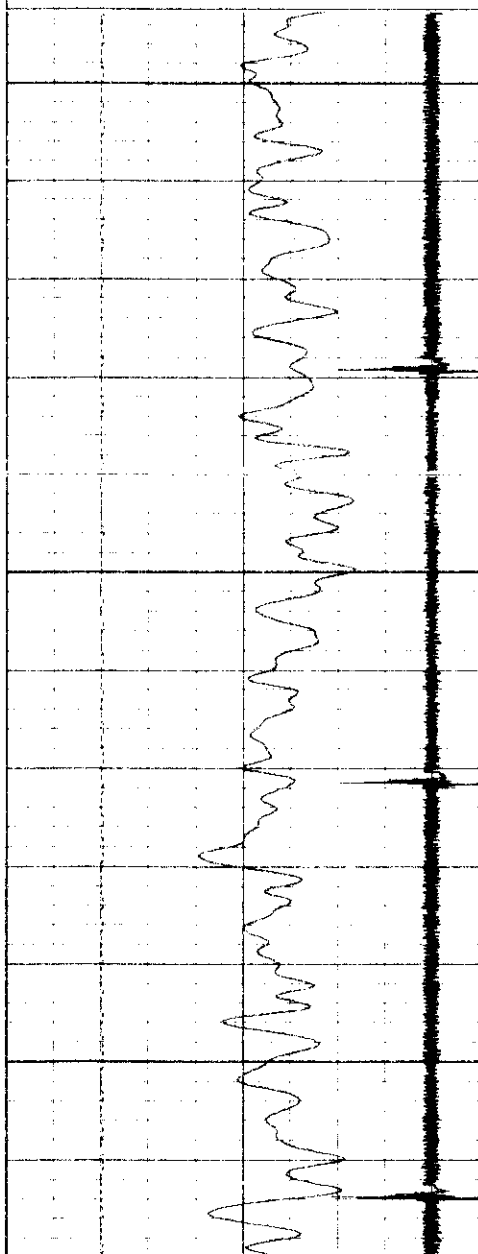
4900



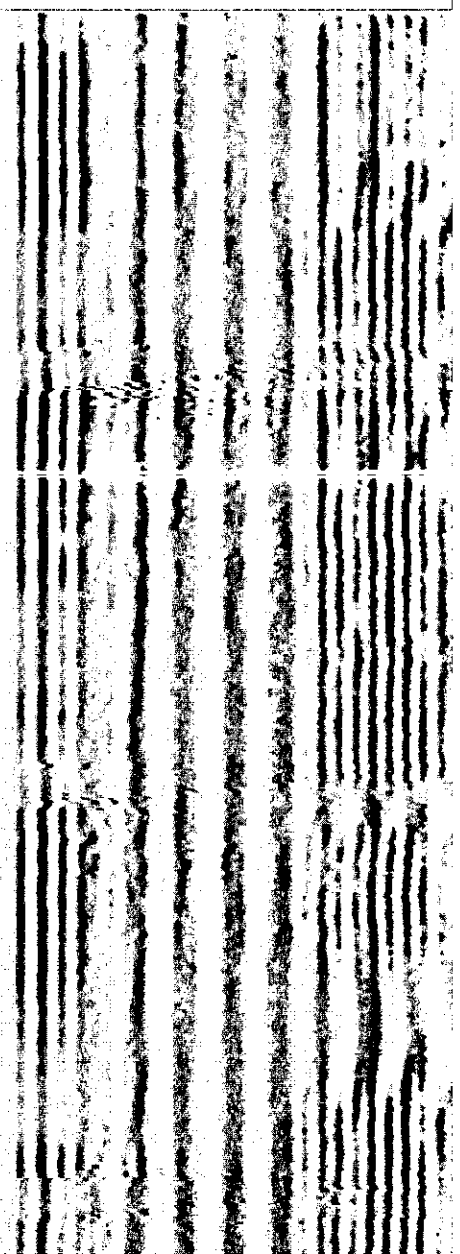
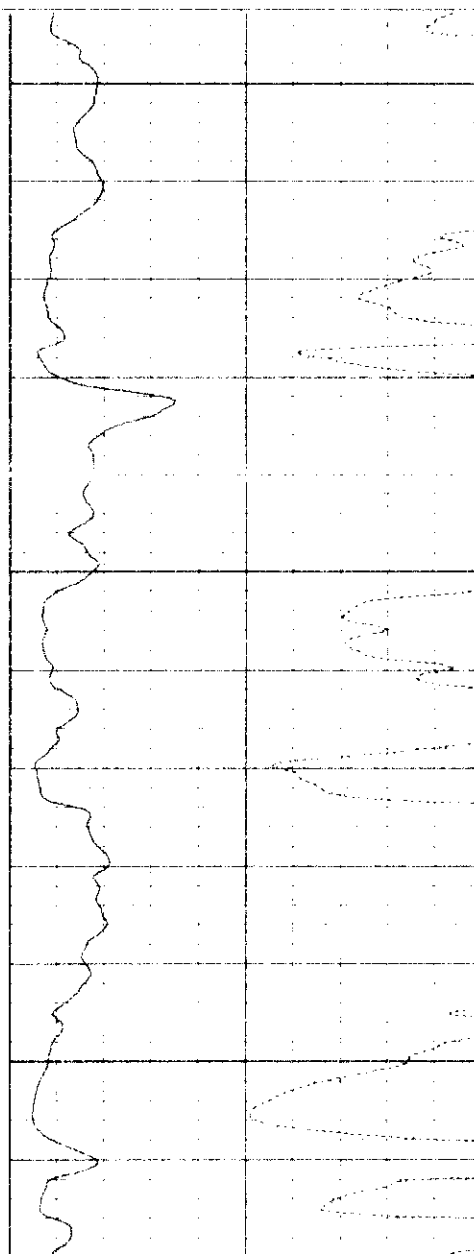
Database File: swpkath1.db
Dataset Pathname: pass4.1
Presentation Format: cbl01.prs
Dataset Creation: Tue Nov 28 15 10:33 2000 by Calc VER_5.4
Charted by: Depth in Feet scaled 1.240



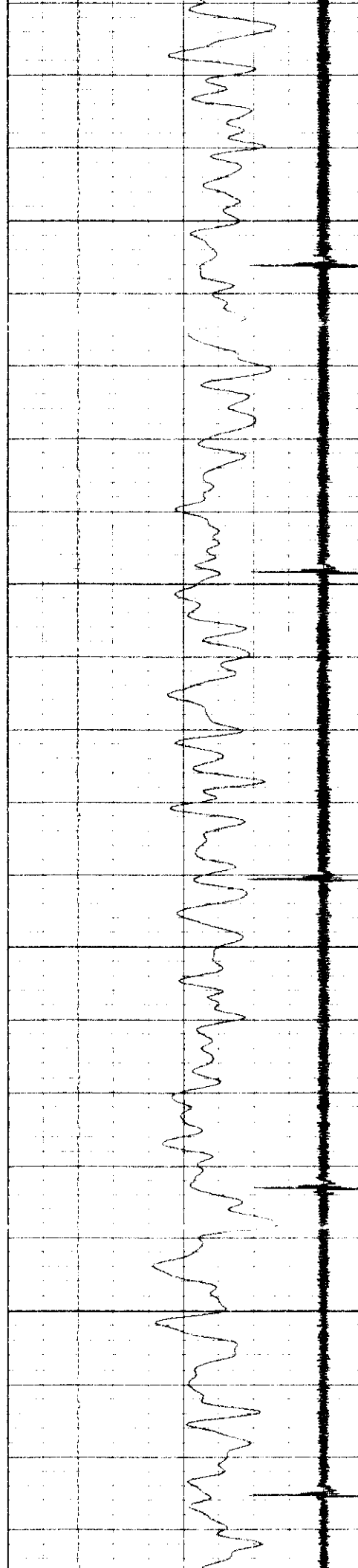
Variable Density 1200



6200

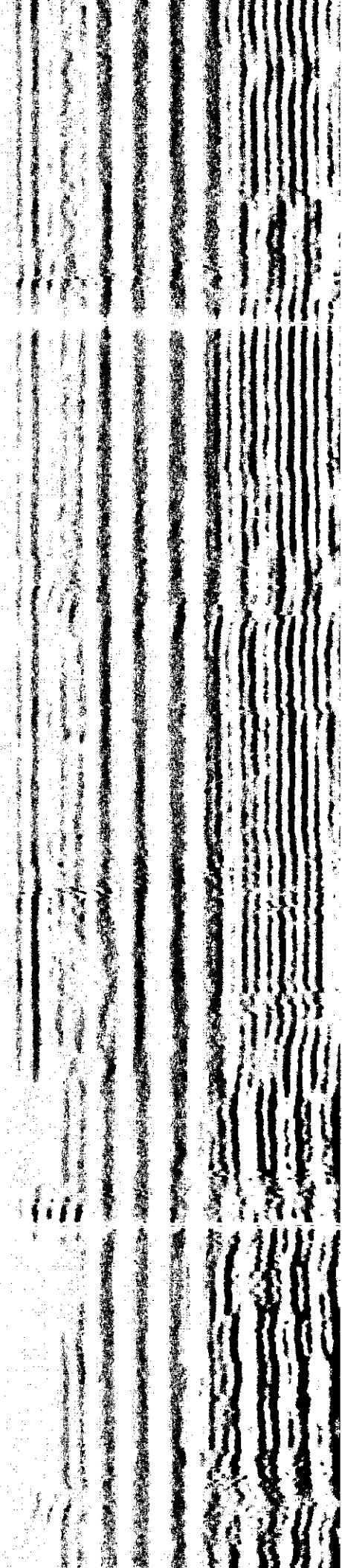
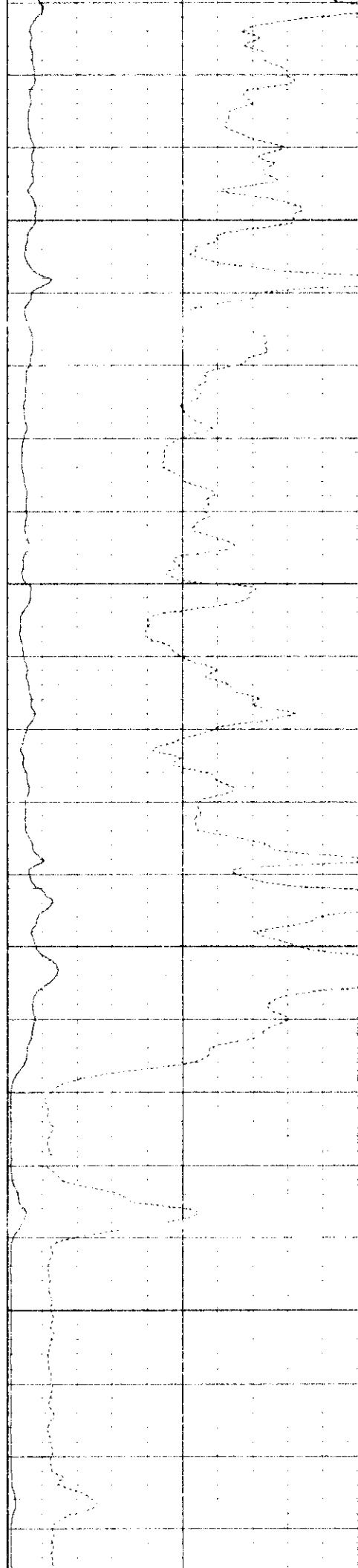


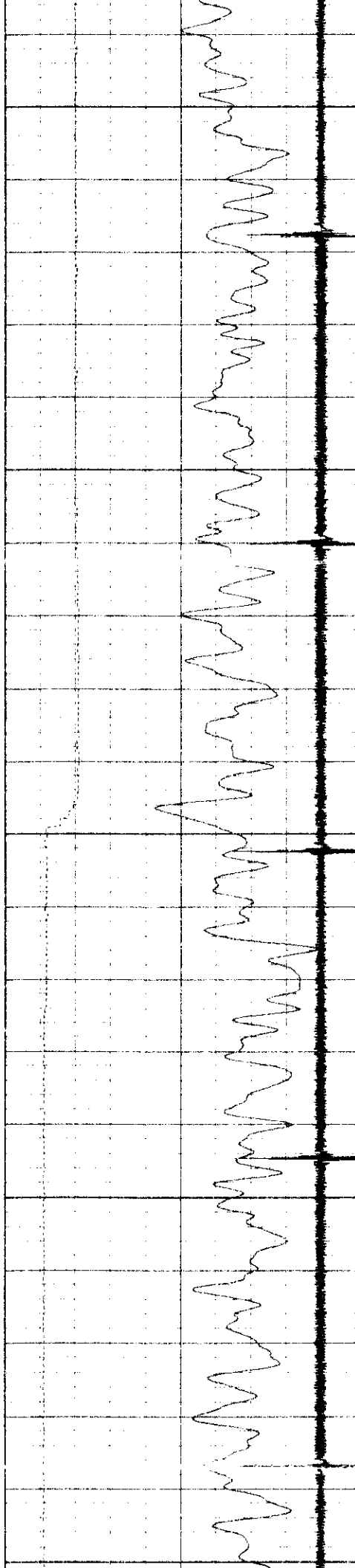
6300



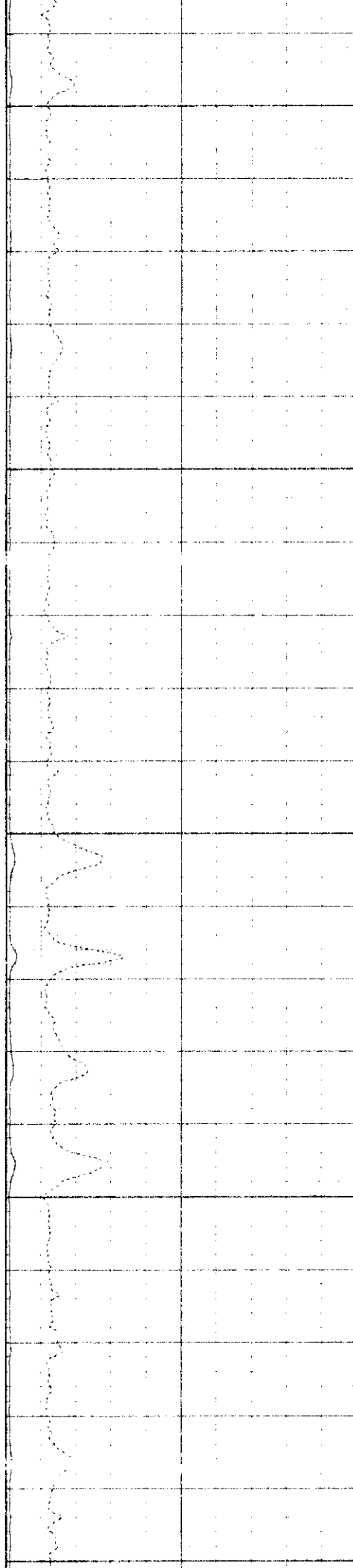
6400

6500

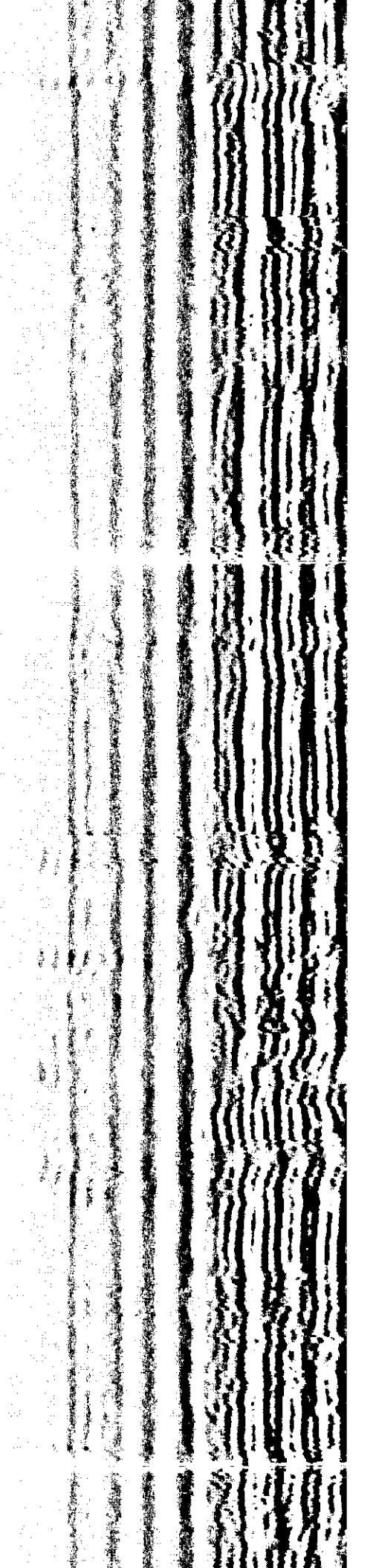


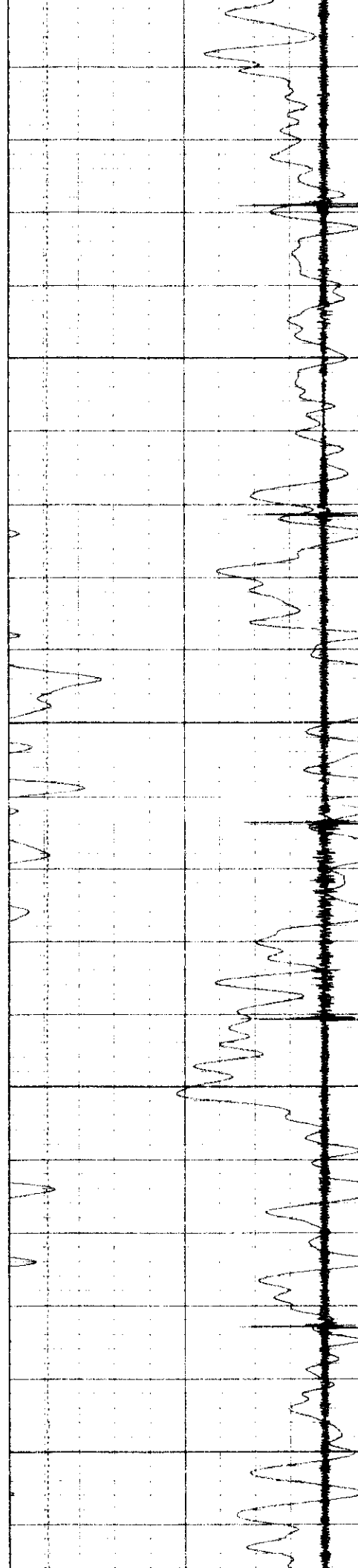


6600



6700

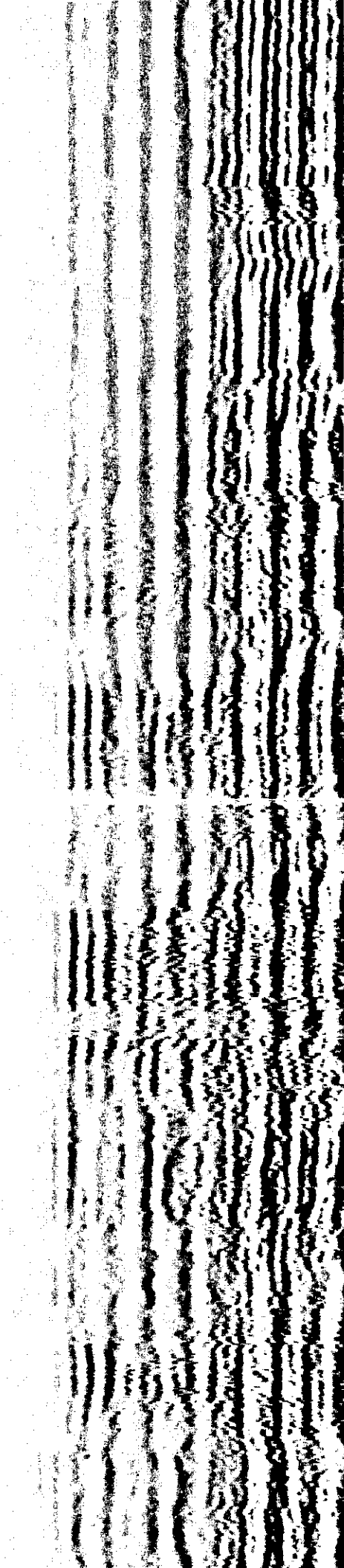
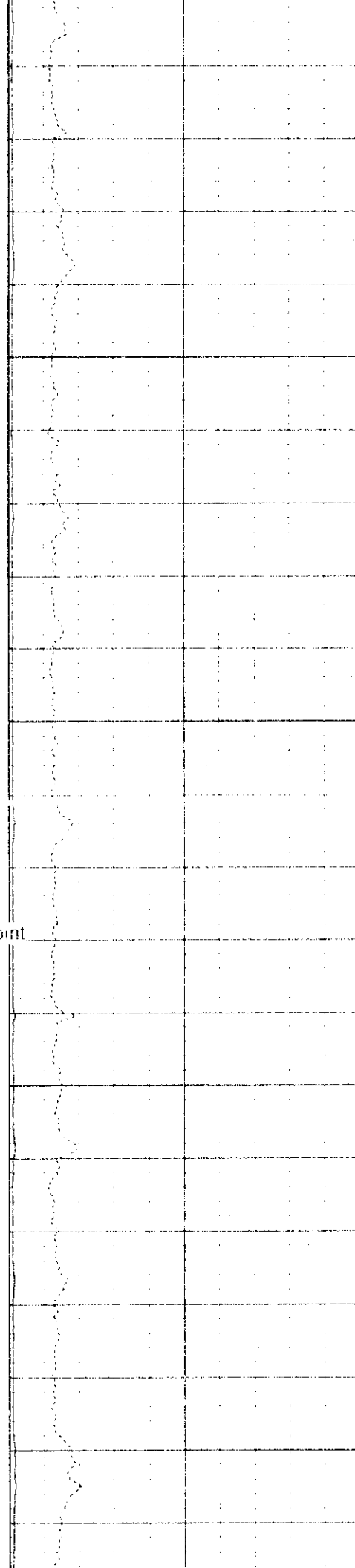


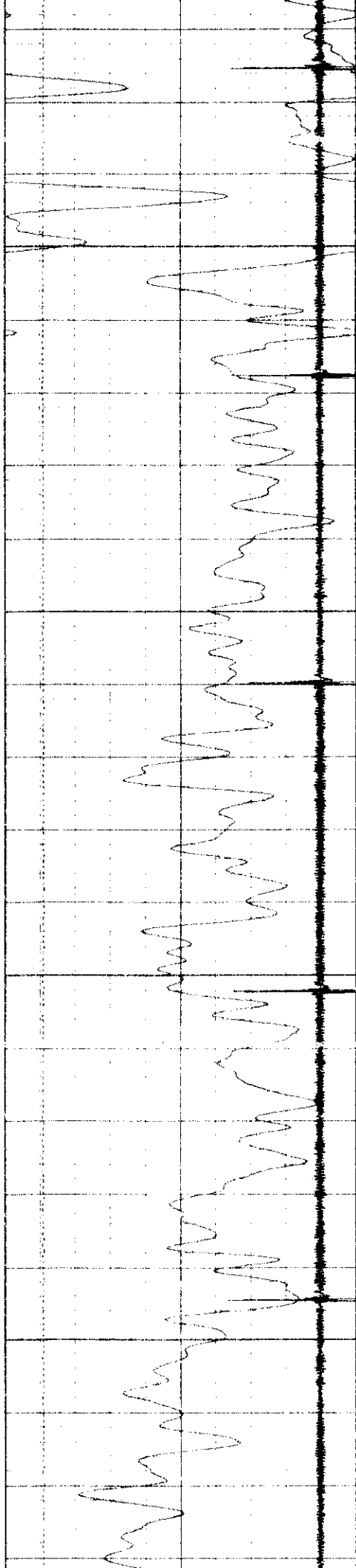


6800

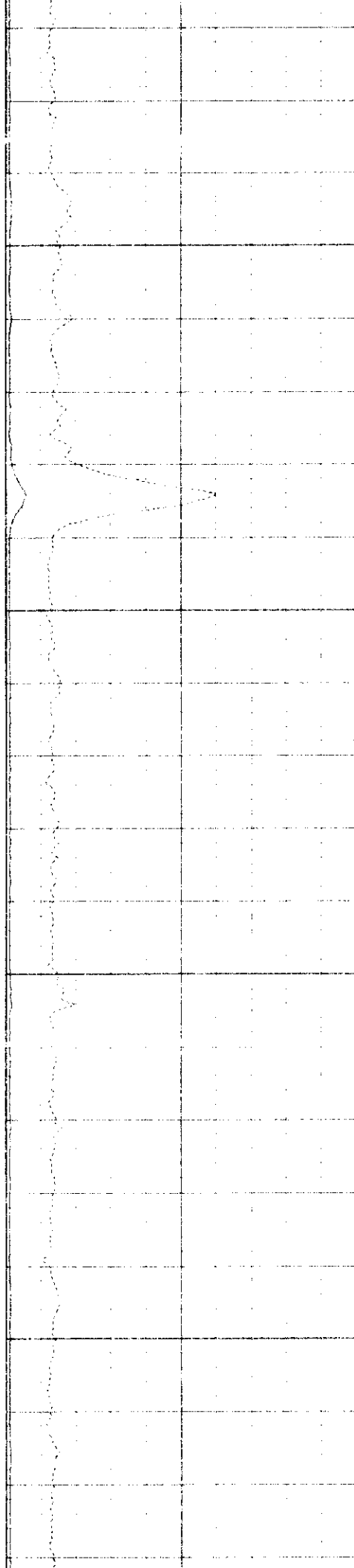
← flag joint

6900

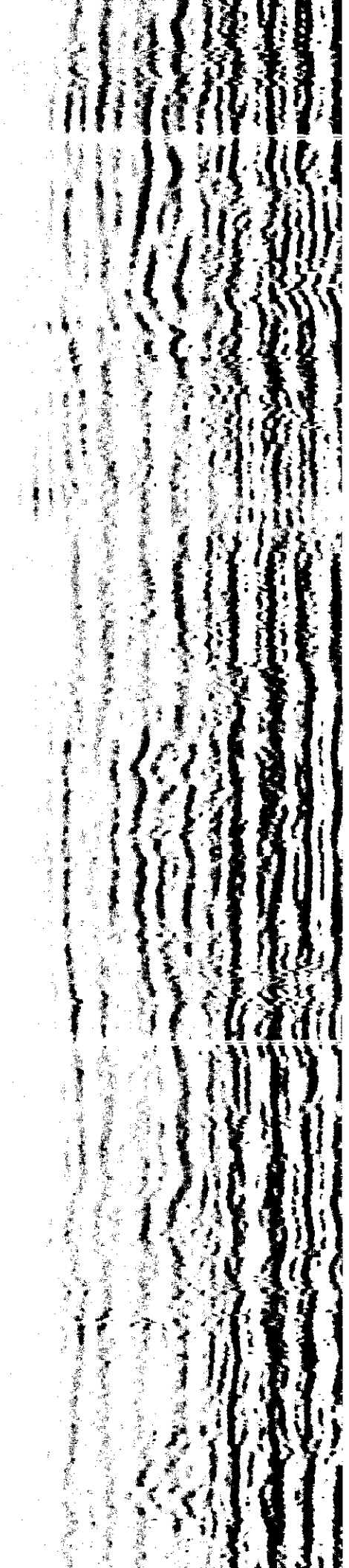


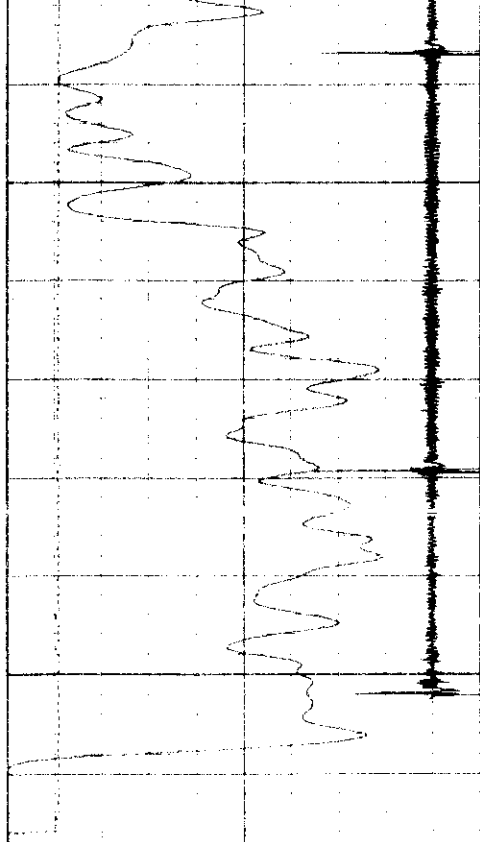


7000



7100

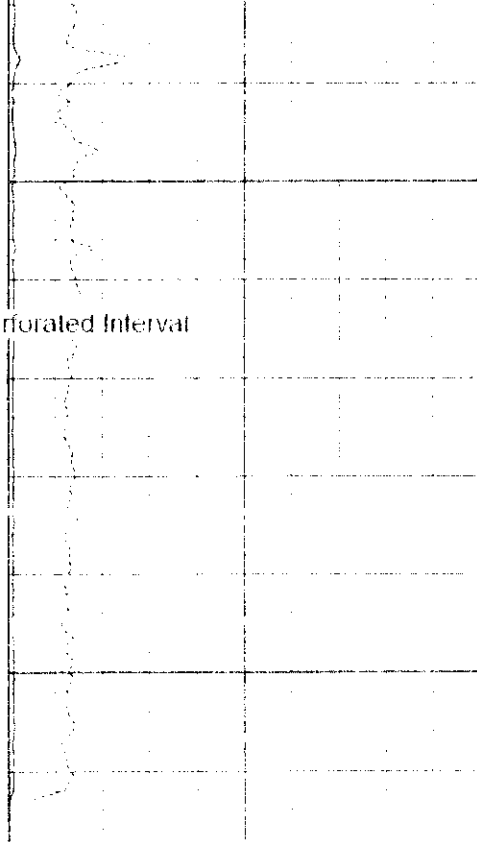




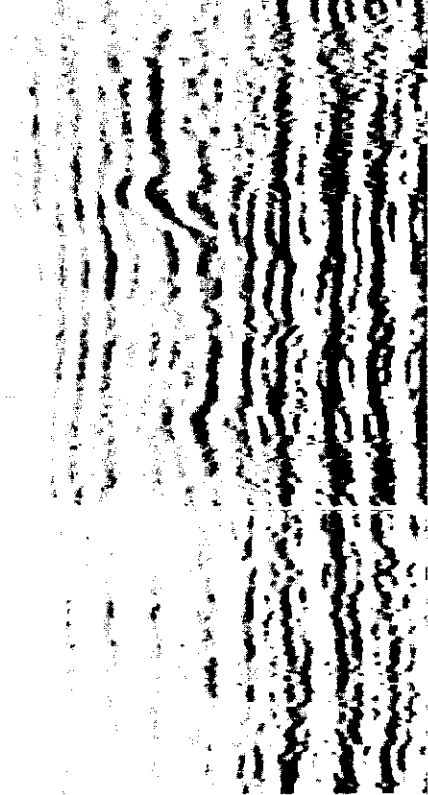
9	Collar Locator	-1
0	Gamma Ray (GAPI)	150
30	LSPD (ft/min)	230

7200

← Perforated Interval



0	Amplified Amplitude (mV)	10 200
0	Amplitude (mV)	100



Variable Density 1200