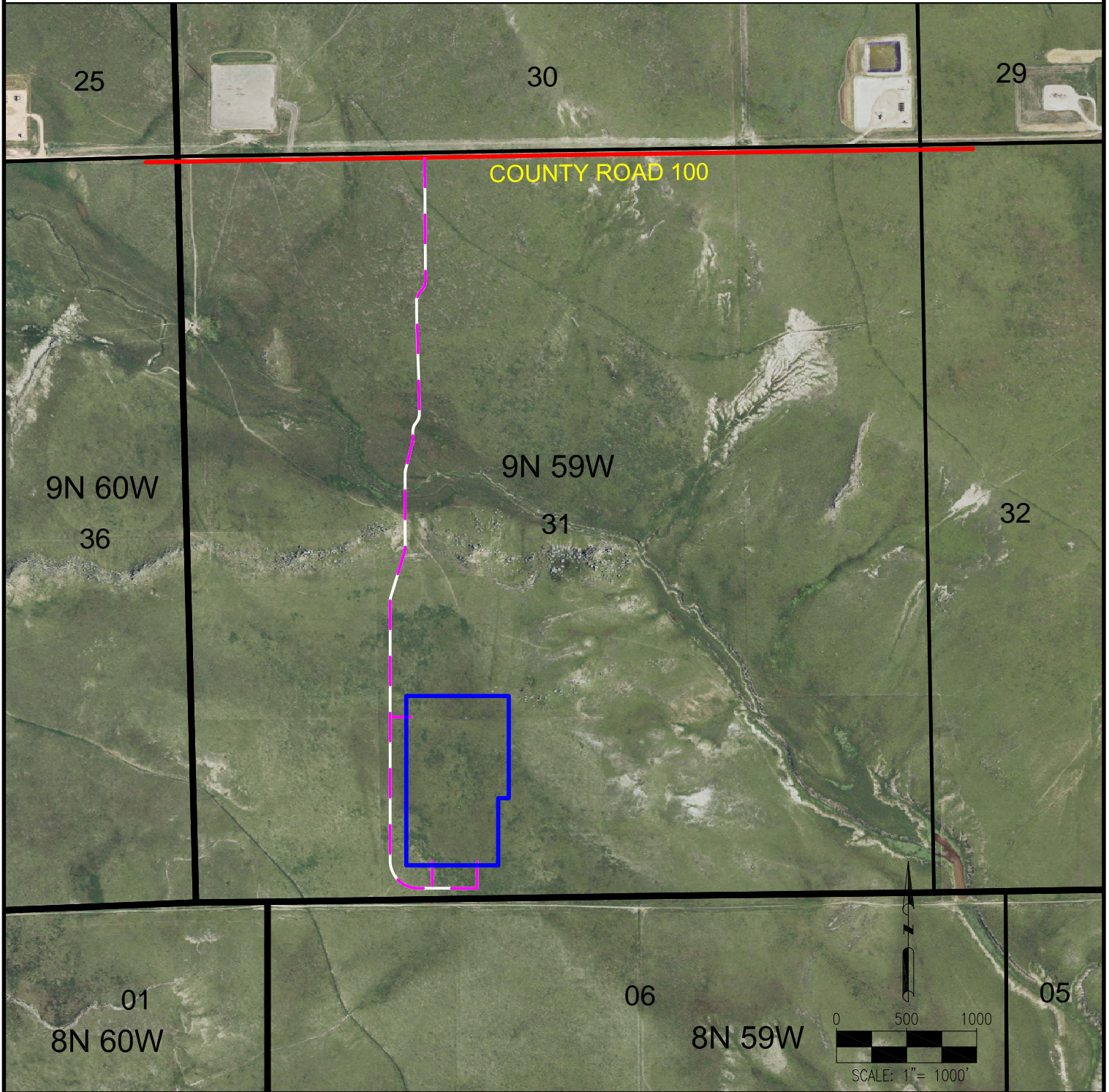


# ANDERSON FACILITY 9-59-31-SESW ACCESS ROAD MAP



## LEGEND:

- = EXISTING ROAD
- = PROPOSED ROAD
- = DISTURBANCE AREA

## NOTES:

1. THIS ILLUSTRATION DOES NOT REPRESENT A MONUMENTED LAND SURVEY AND THEREFORE CANNOT BE RELIED UPON TO DETERMINE OWNERSHIP.
2. THIS ILLUSTRATION IS INTENDED FOR REFERENCE USE ONLY AND SHOULD NOT BE USED TO ESTABLISH, TRANSFER, OR DISPUTE BOUNDARIES.
3. PARCEL LINES DEPICTED HEREON MAY NOT HAVE BEEN FIELD VERIFIED AND MAY BE BASED UPON PUBLICLY AVAILABLE DATA.

## DATA SOURCE:

AERIAL IMAGERY: NAIP 2015  
PLSS: BLM  
  
PUBLICLY AVAILABLE DATA  
SOURCES HAVE NOT BEEN  
INDEPENDENTLY VERIFIED BY PFS.

PREPARED BY:



FIELD DATE:  
02-24-16

DRAWING DATE:  
04-25-16

BY:  
KAD

CHECKED BY:  
MLP

SITE NAME:

ANDERSON FACILITY 9-59-31-SESW

SURFACE LOCATION:

SE 1/4 SW 1/4 SEC. 31, T9N, R59W, 6TH P.M.  
WELD COUNTY, COLORADO

PREPARED FOR:

