



**CEMENT BOND LOG**  
**GAMMA RAY**  
**CCL**

## ENERGY SERVICES

Company					ENERGY SEARCH COMPANY				
1/4'S	SWNW				Well	TSUZUKI #6			
SEC.	27				Field				
TWP.	1S				County	ADAMS		State	COLORADO
RGE.	67W				API#: 05-001-07230				
WBS:									
1/4'S:	SWNW		SEC:	27	TWP:	1S		RGE:	67W

Permanent Datum	GL	Elevation	Elev K.B.
Log Measured From	KB		Elev D.F.
Drill Measured From	KELLY BUSHIN	Feet Above Datum	Elev G.L.

Date	4-25-16	Gun Type		Gun Size	
Run Number	1	Charge Type		Gram Wt.	
Magna Depth	4700'	Shots / Foot	From	To	# of Shots
Driller Depth	NA				
First Reading	4700'				
Last Reading	SURFACE				
Max Temperature	NA				
Est. Cement Top	4308'				
Fluid Type	WATER				
Fluid Density	8.3				
Est. Fluid Level	56'				
Service Order	30001463				
Truck No	222	Casing Data			
Recorded By	J. JOHNSON	Size inches	Weight Lb/Ft	From	To
Witnessed By	MR. THOMAS MAJORS				
Magna Contact	Ryan Ludwar ( 307 ) 680-8124				

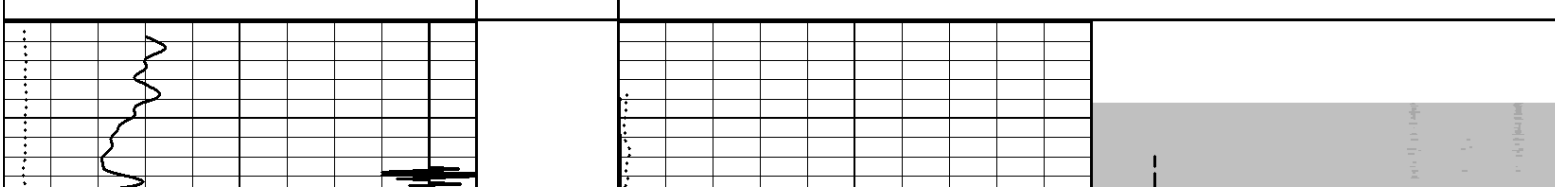
[illegible]

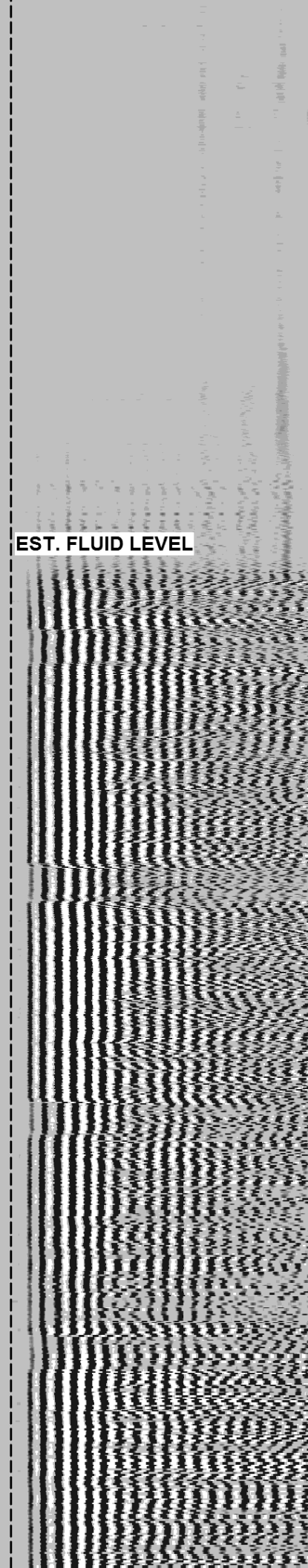
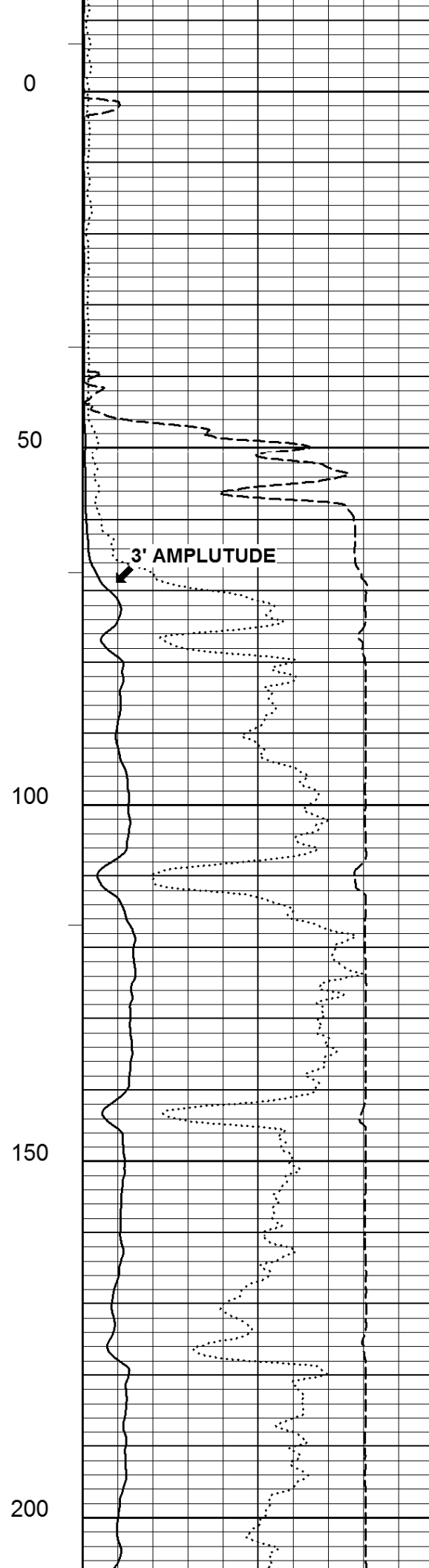
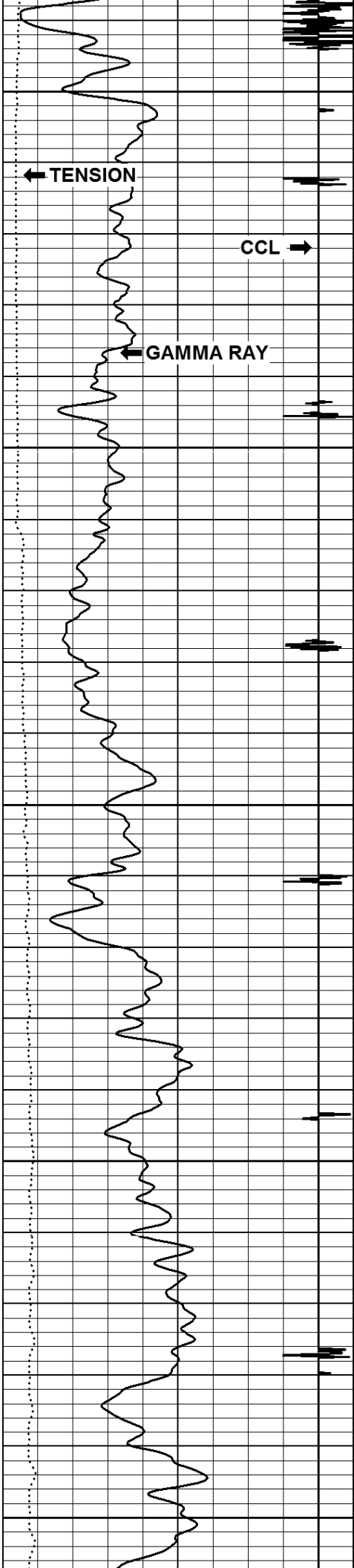
Remarks:

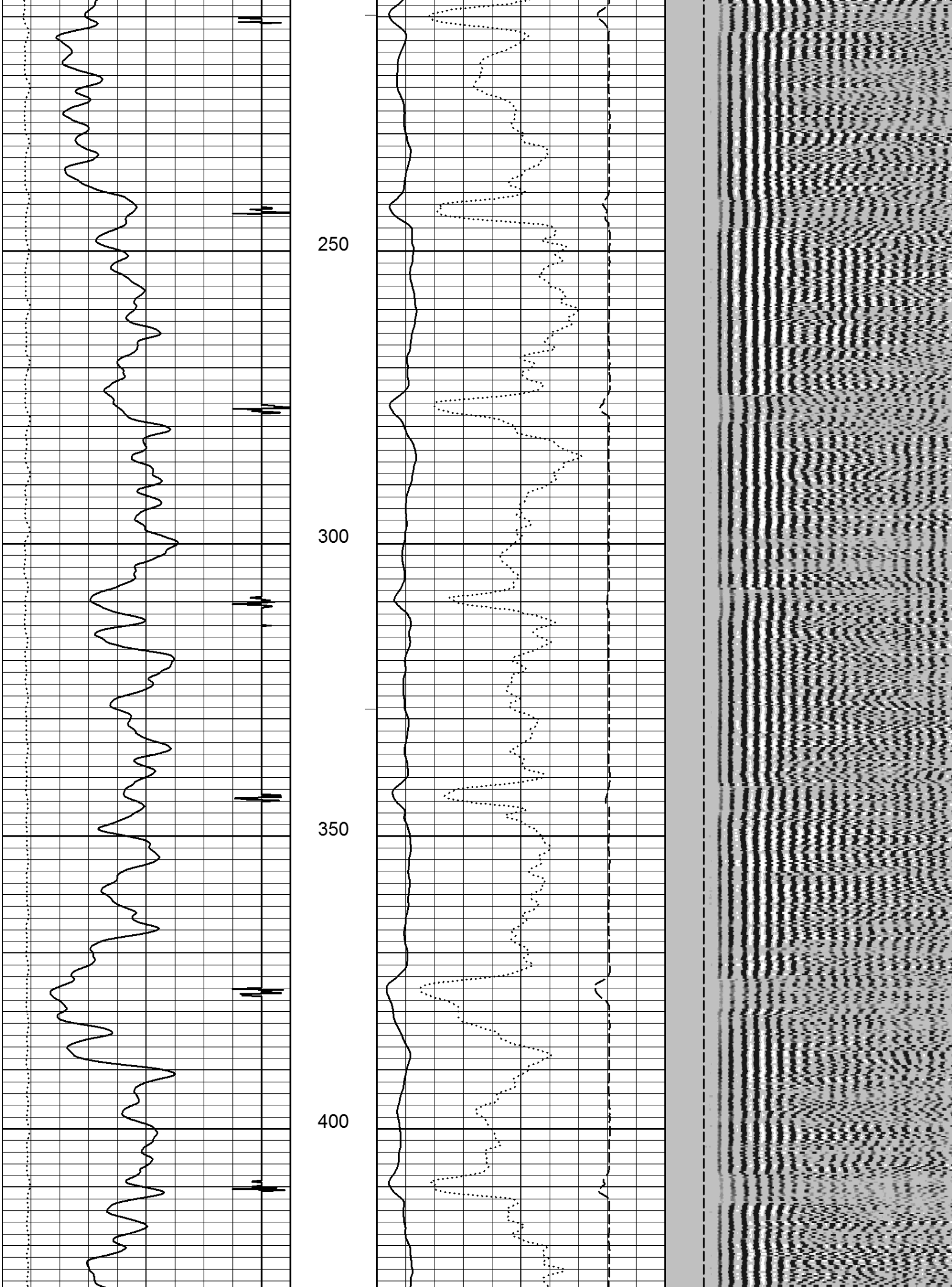
Previous Well Information	
Depth Control Log	
Perforated	
Bridge Plug Set At	
Cement Retainer Set At	
Production Packer Set At	

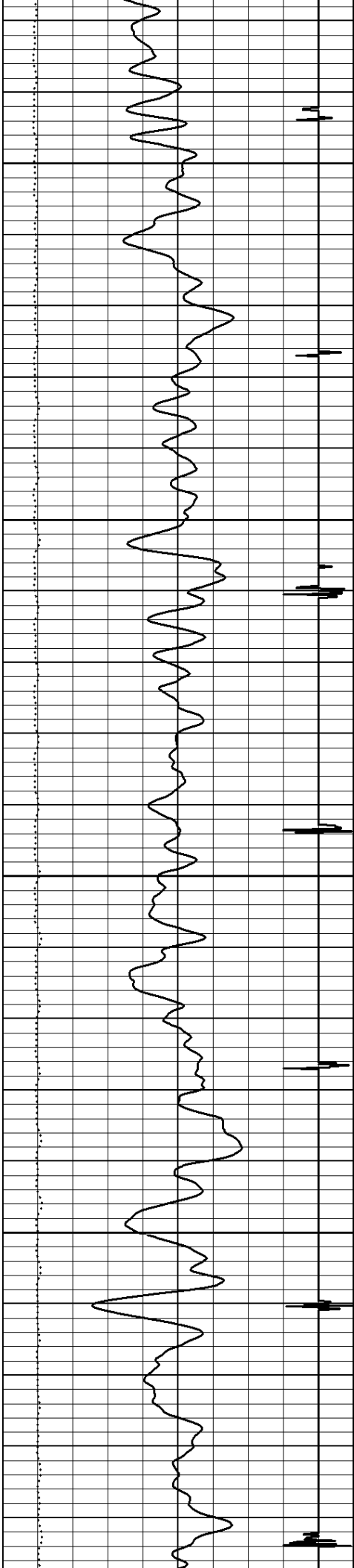
All interpretations are opinions based on inferences from electrical or other measurements and we cannot, and do not guarantee the accuracy or correctness of any interpretations, and we shall not, except in the case of gross or willful negligence on our part, be liable or responsible for any loss, costs, damages or expenses incurred or sustained by anyone resulting from any interpretation made by any of our officers, agents, or employees. These interpretations are also subject to our general terms and conditions as set out in our current price schedule.

2016-04-25 12:38	FEET	3' AMPLITUDE (mV)	FREE PIPE TIME (μs)
Tension (lbF)	1:240	0.0 100.0	200.0 1200.0
0.00 2000.00		AMPLITUDE X 5 (mV)	5' VARIABLE DENSITY (μs)
COLLAR LOCATOR		0.0 20.0	200.00 1200.00
0.0 10.0		3' TRAVEL TIME (μs)	
GAMMA RAY		800.0 150.0	
0.0 150.0		Logging Up	File TOP.pre
Pass No. 16		Shutin	
	-30.34		100701







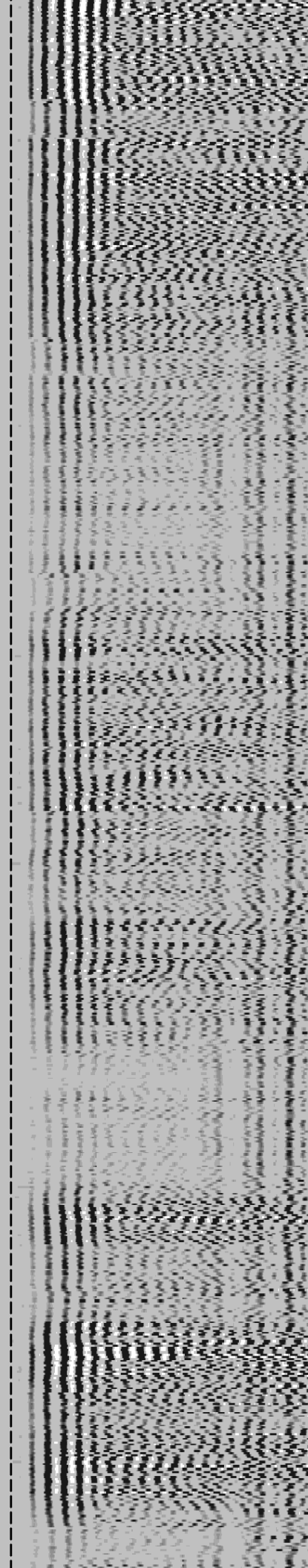
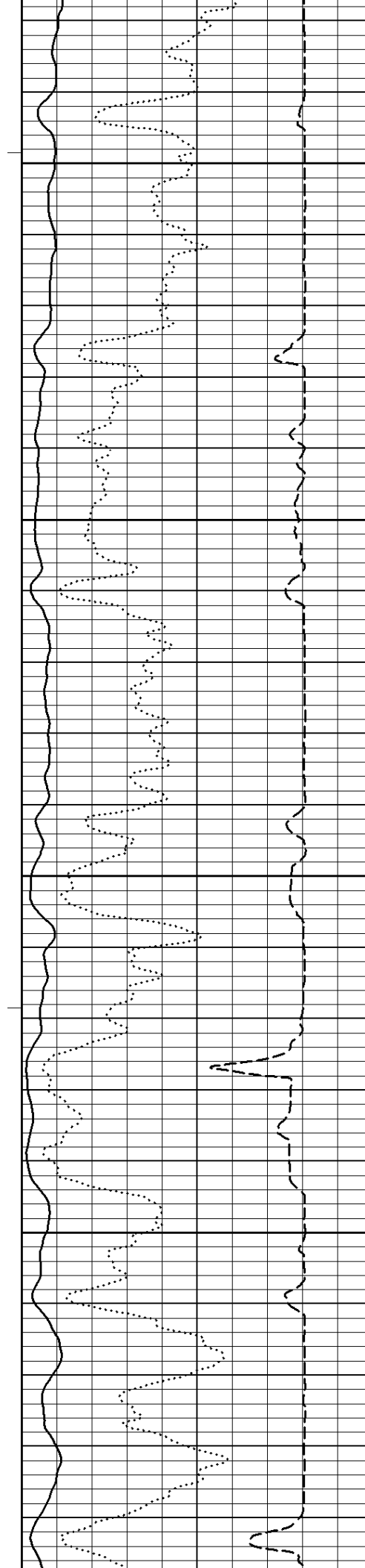


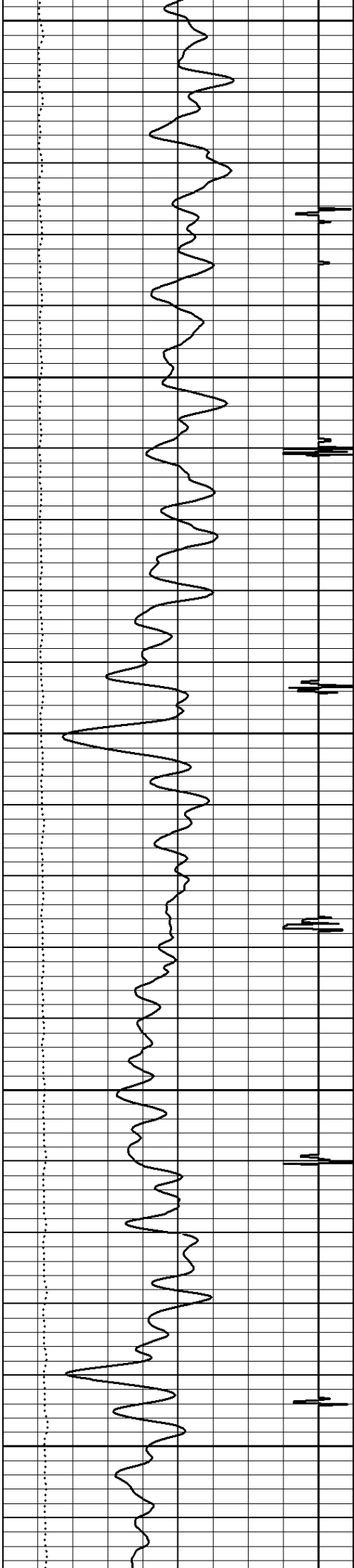
450

500

550

600





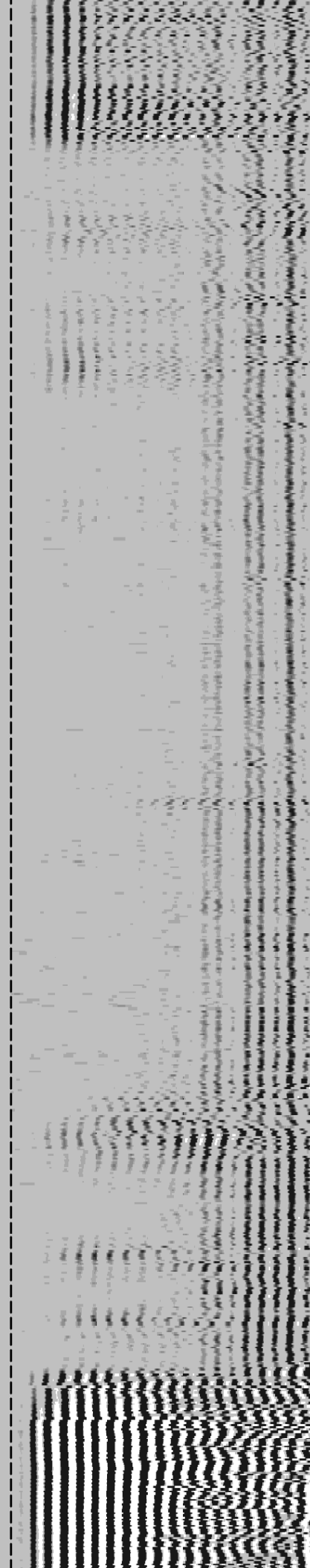
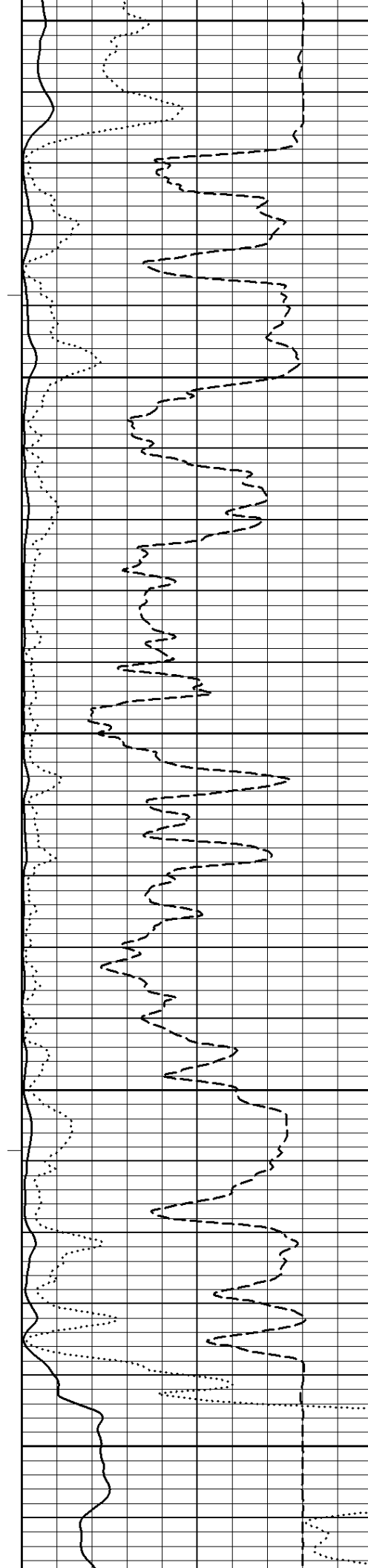
650

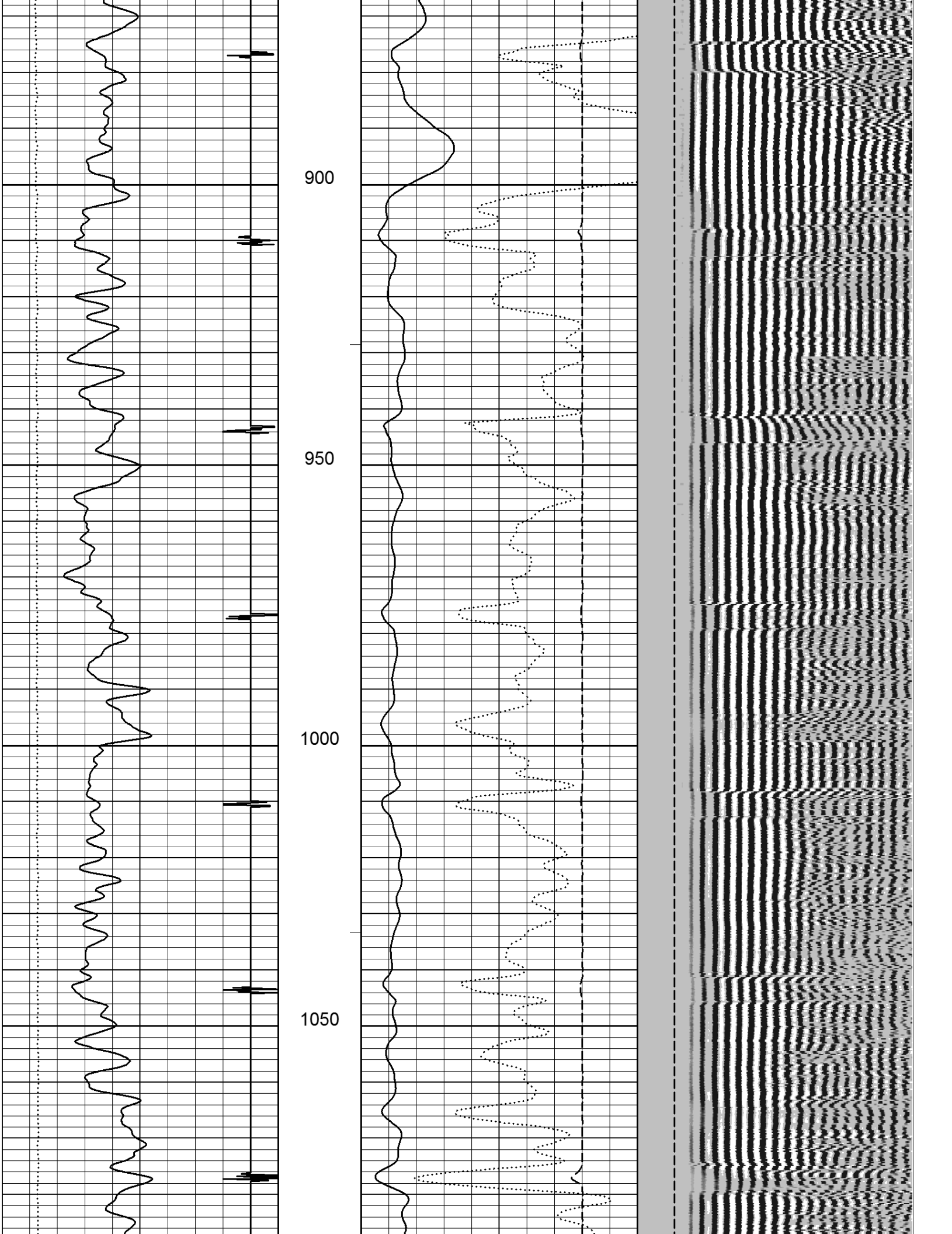
700

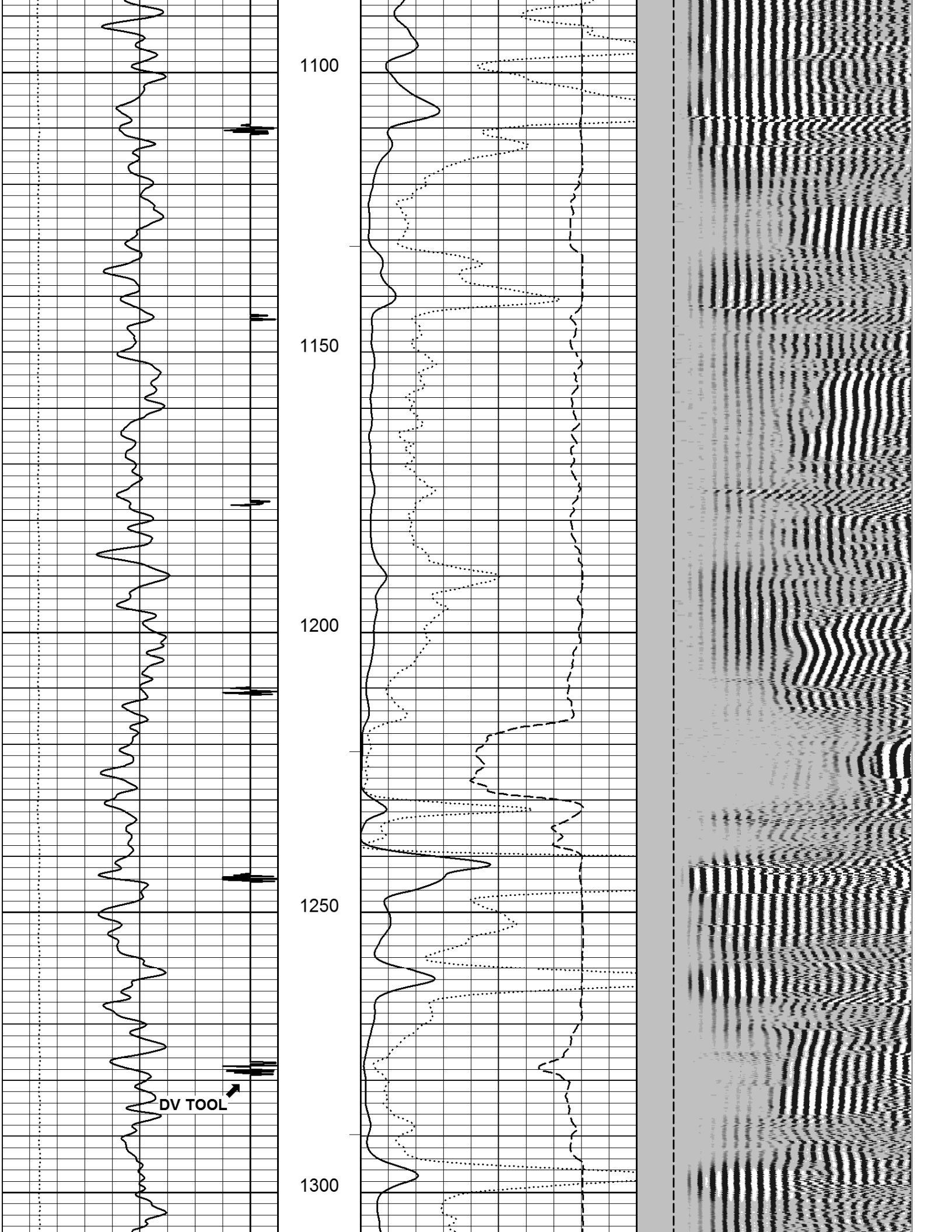
750

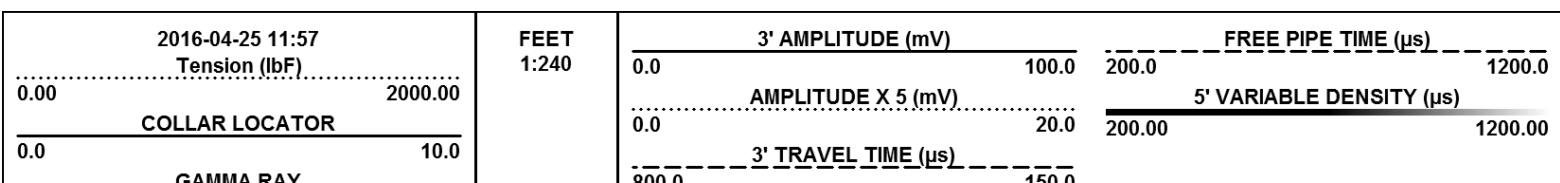
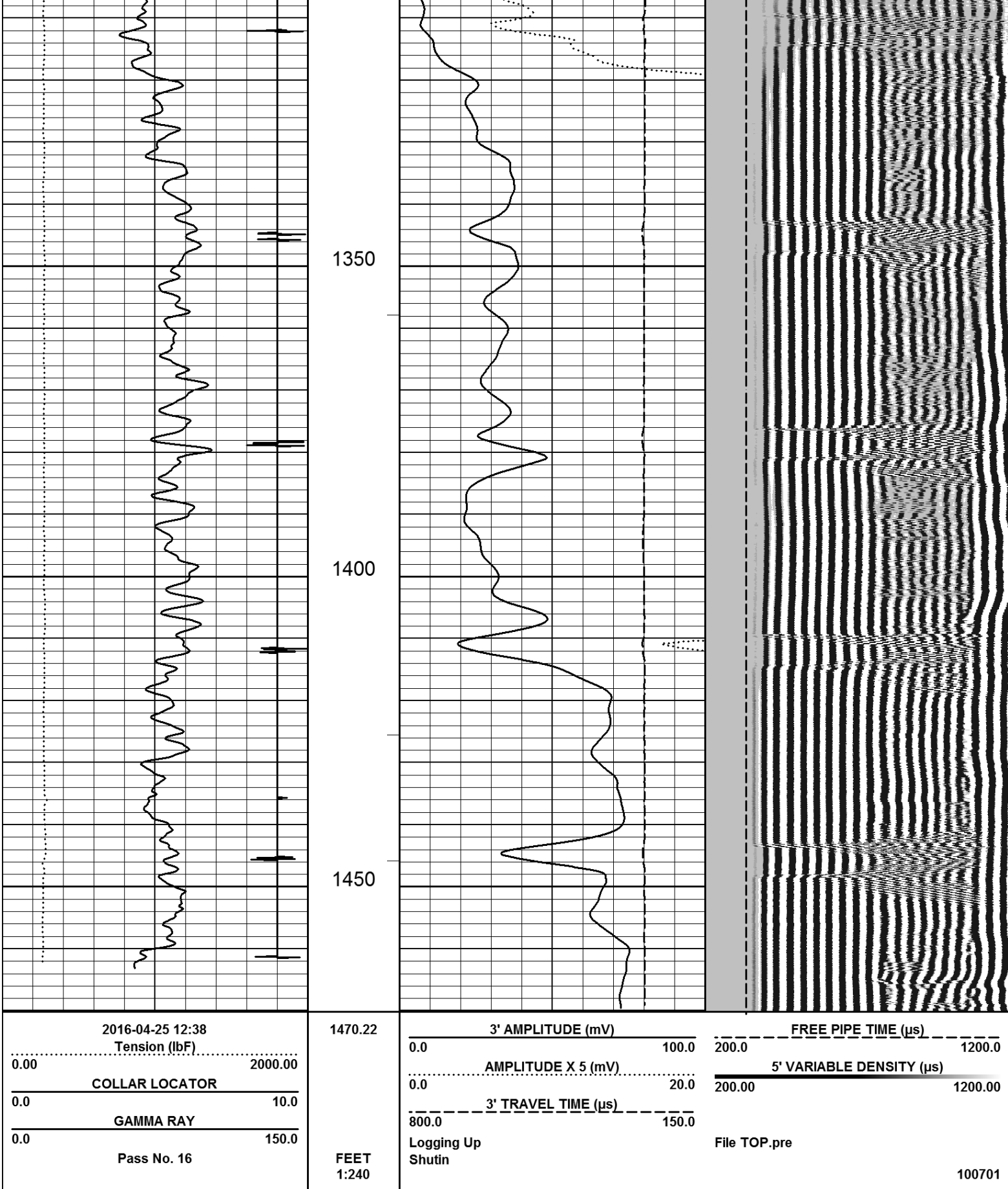
800

850

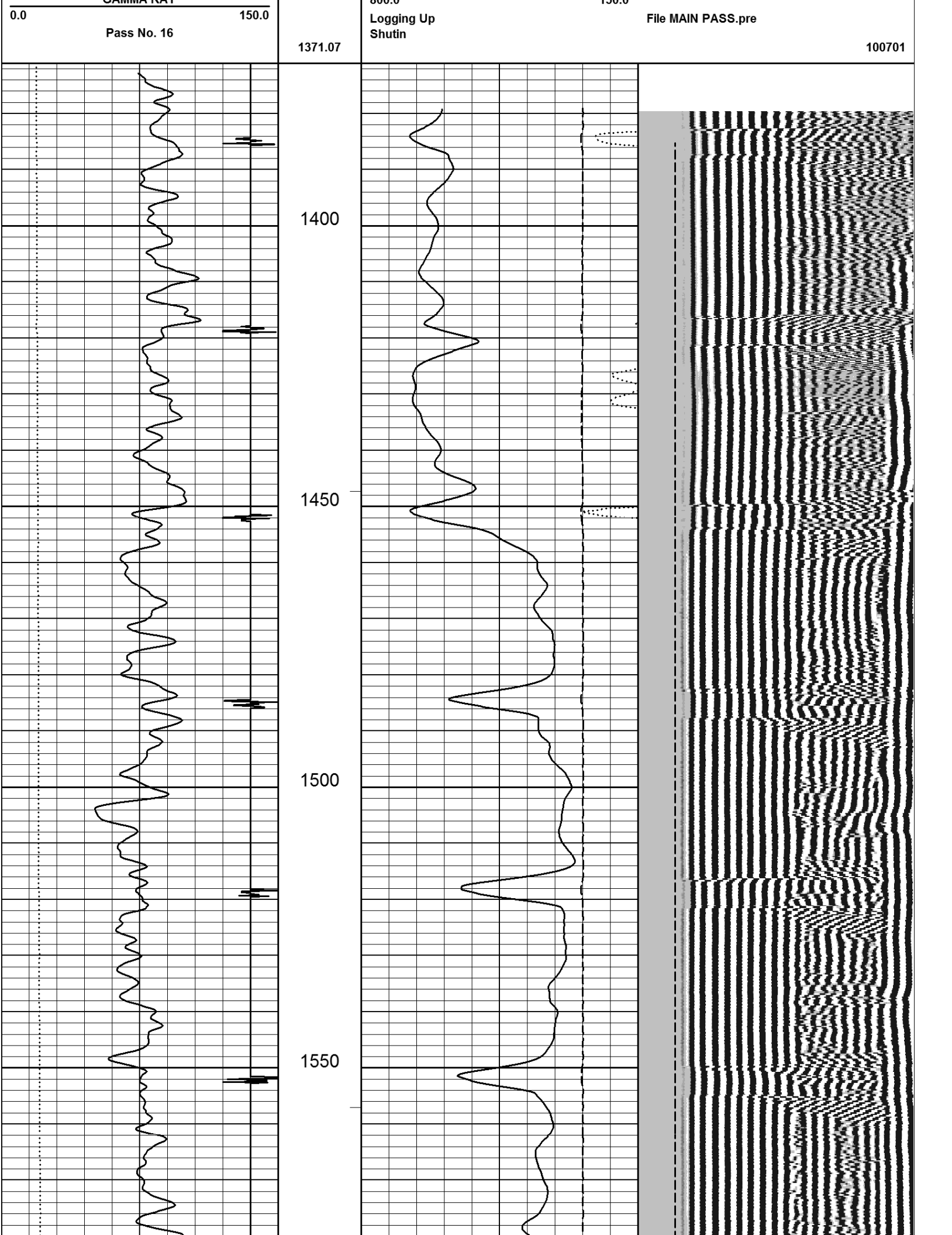


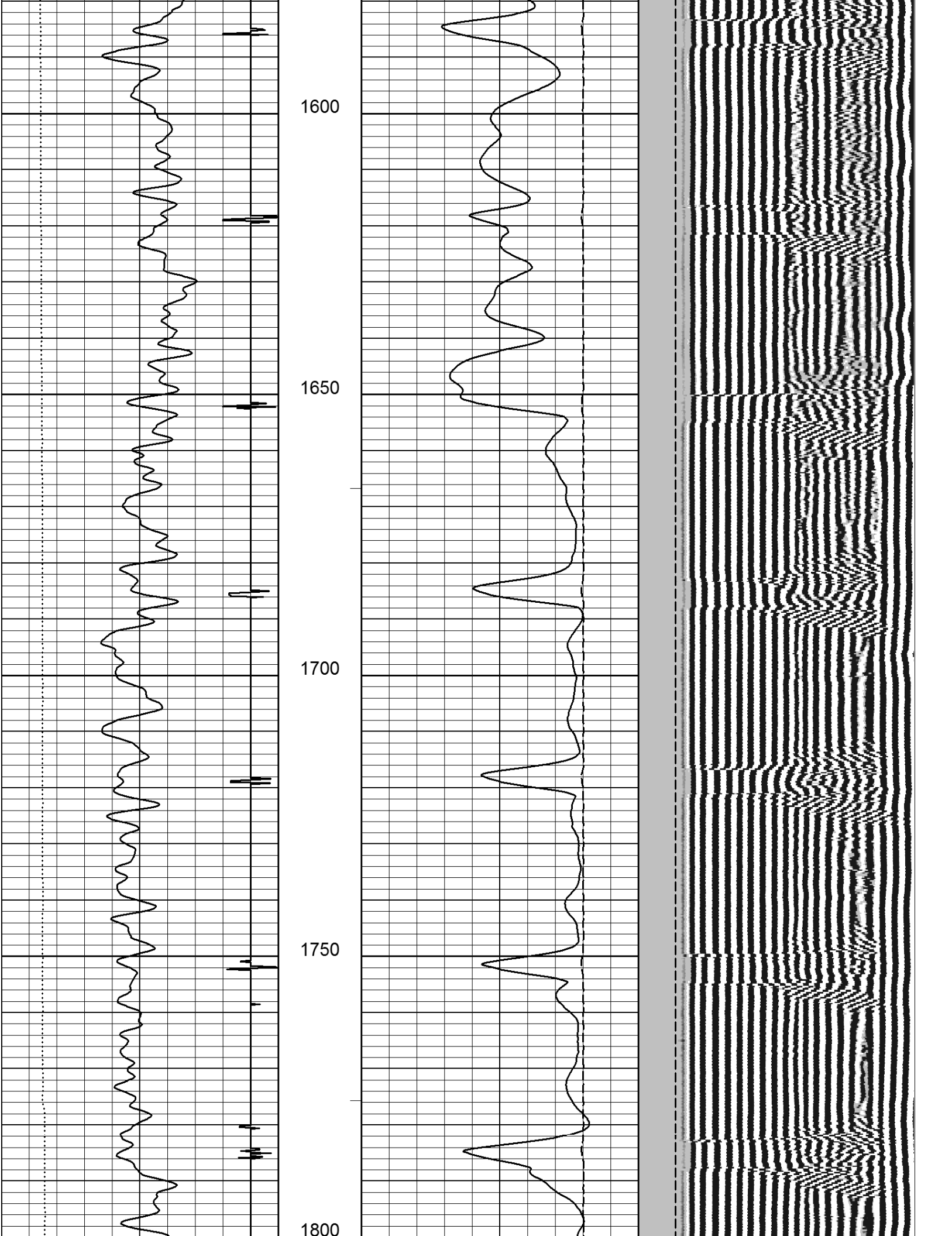


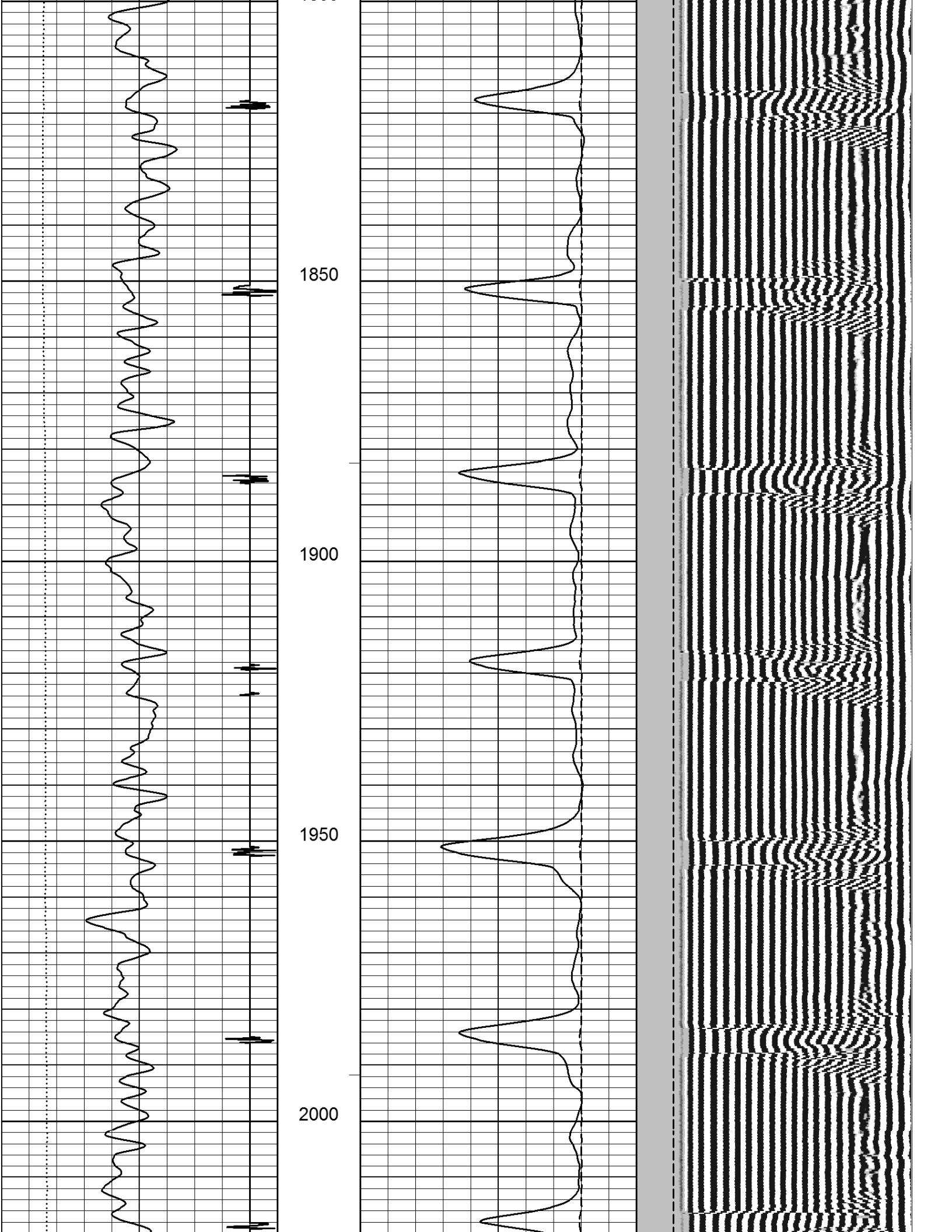


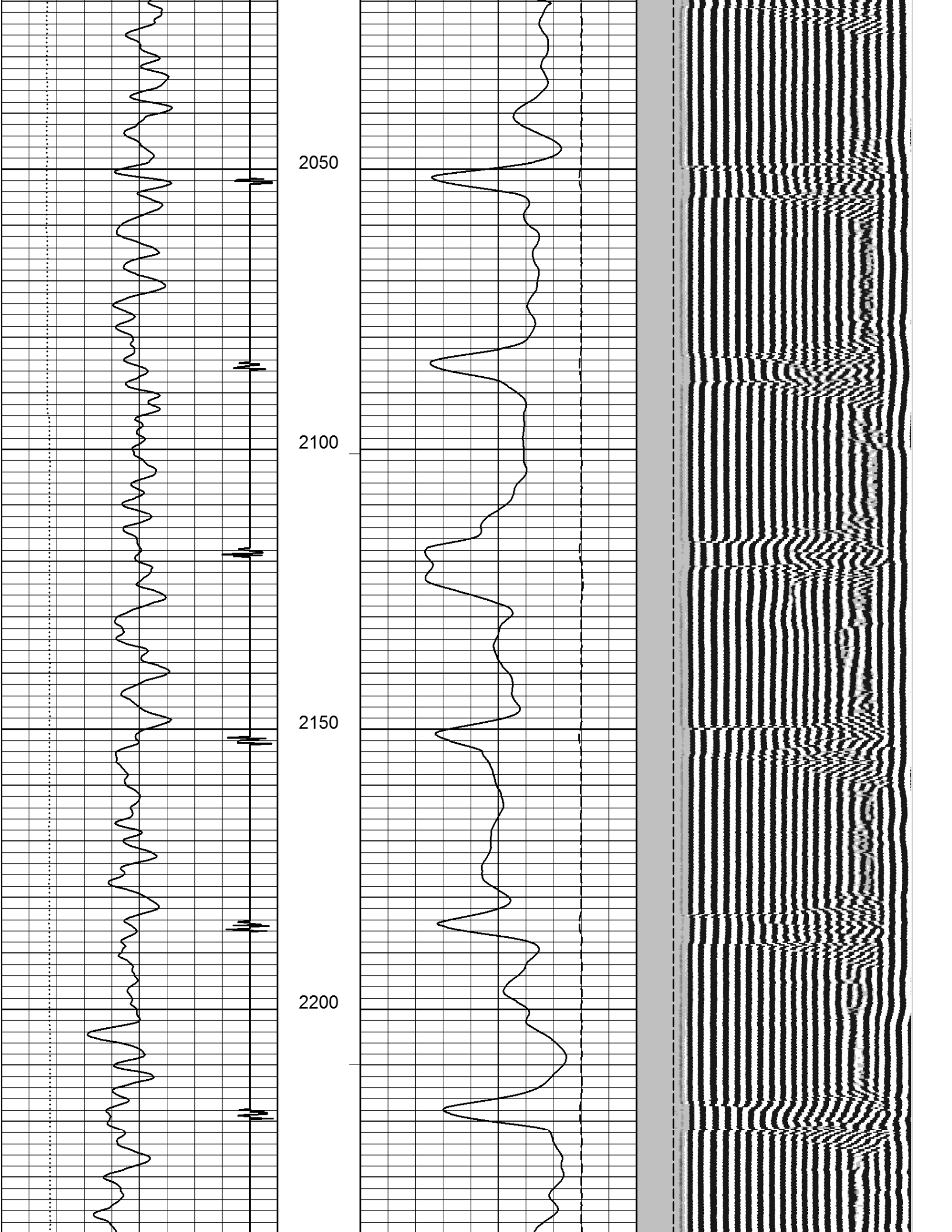


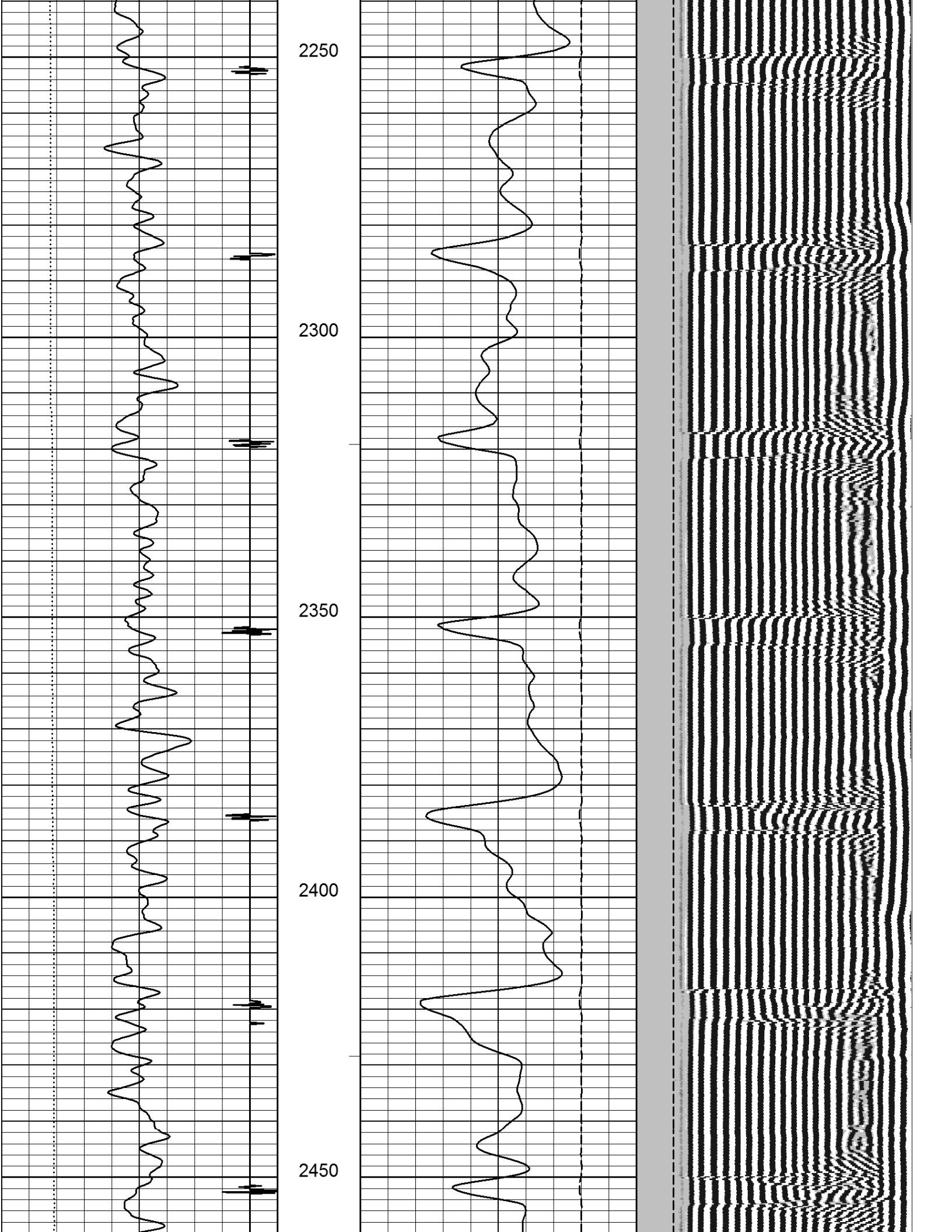


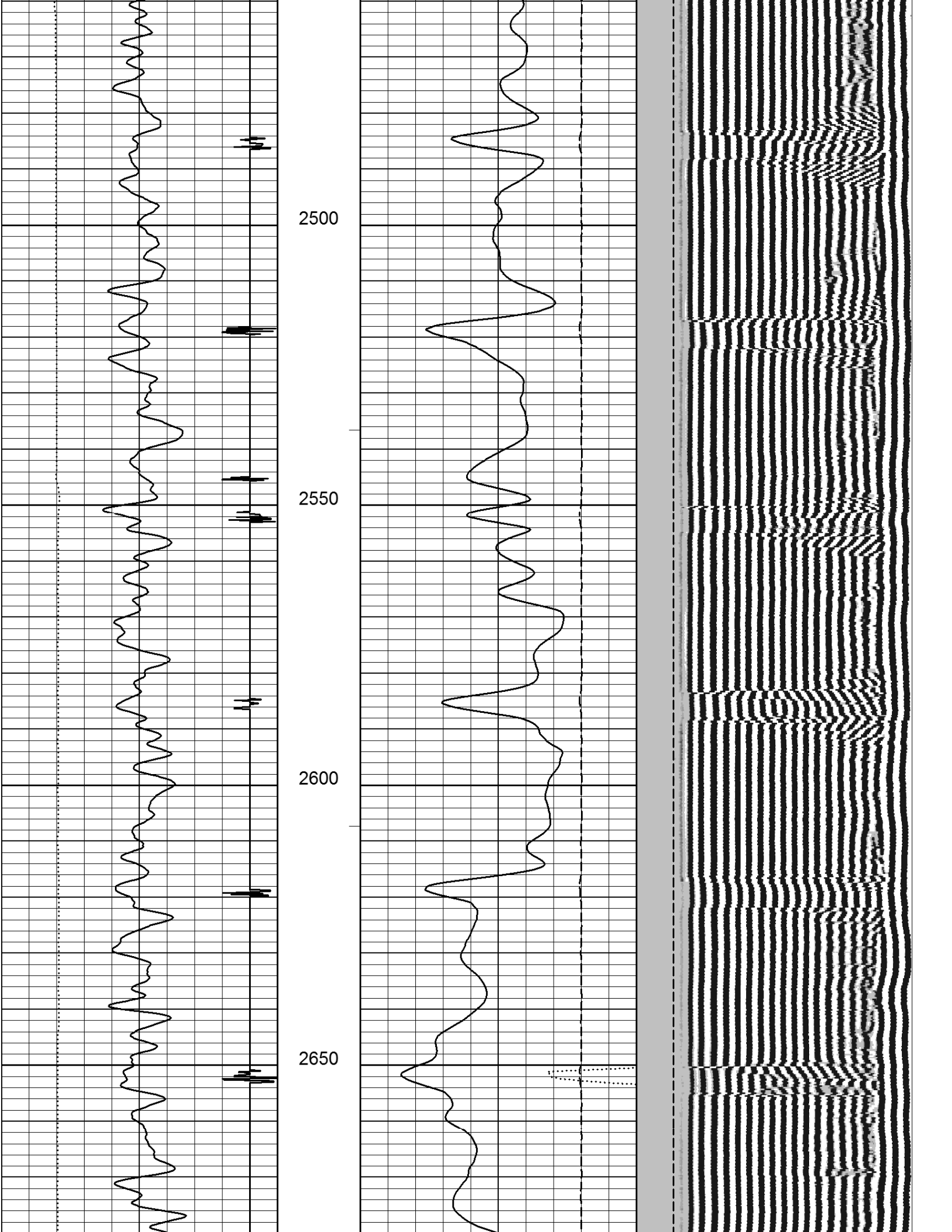


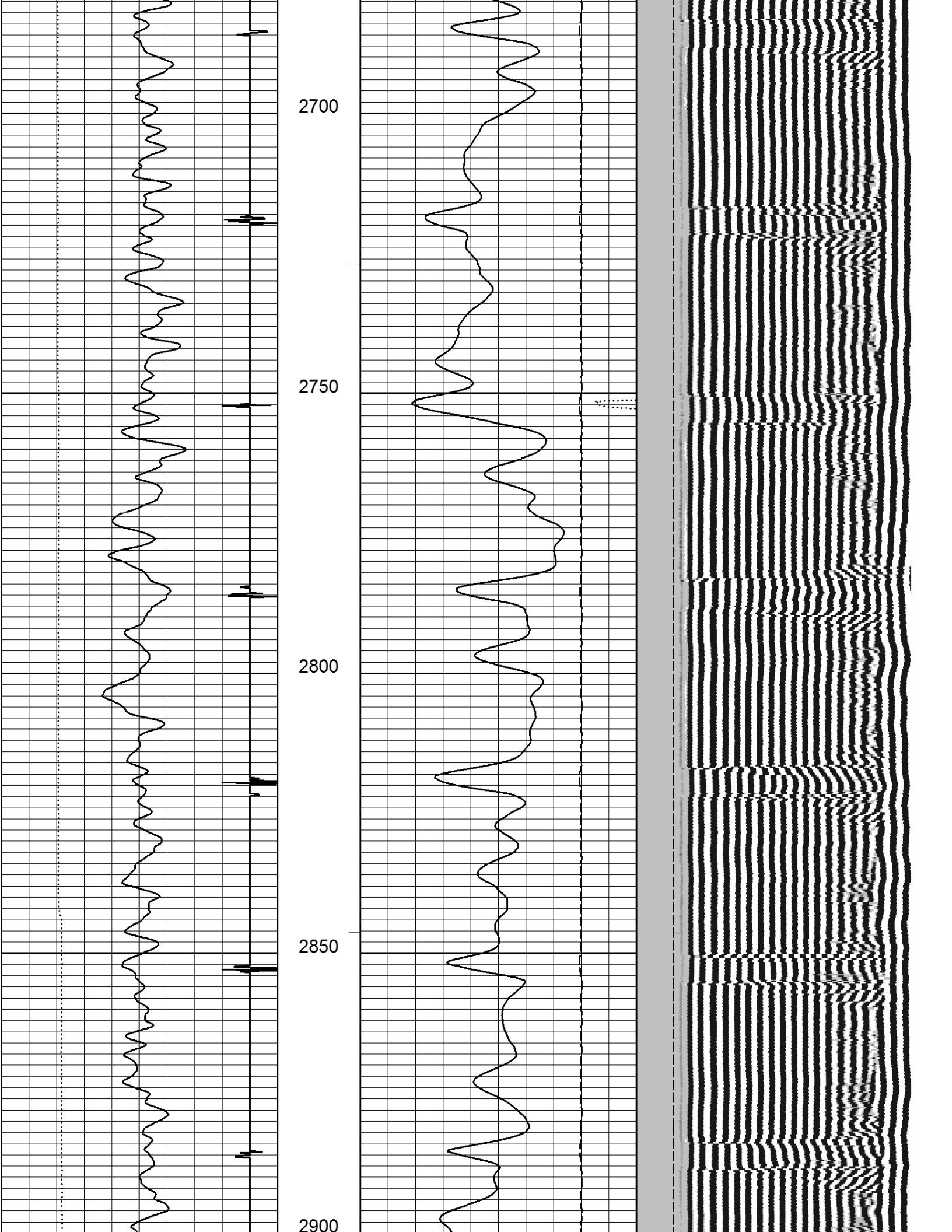


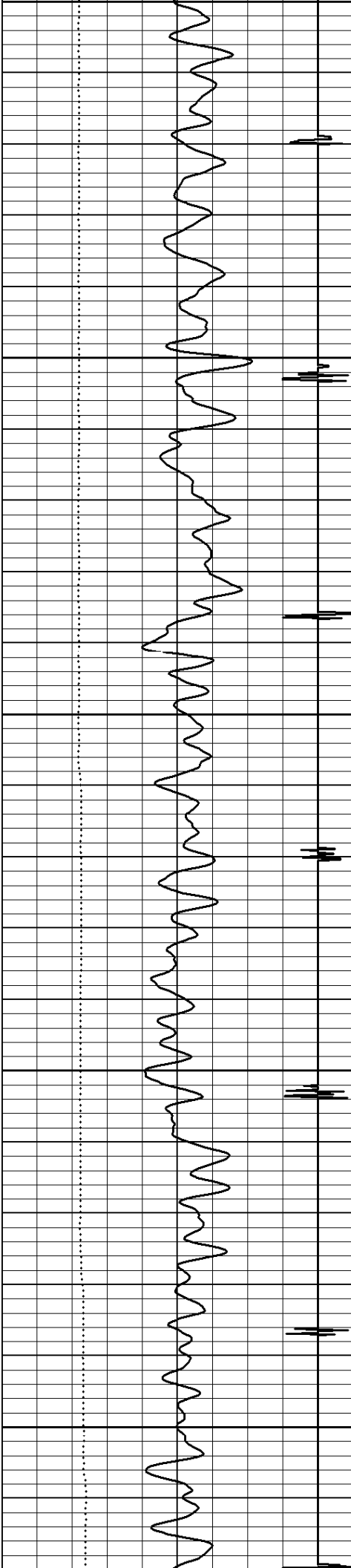










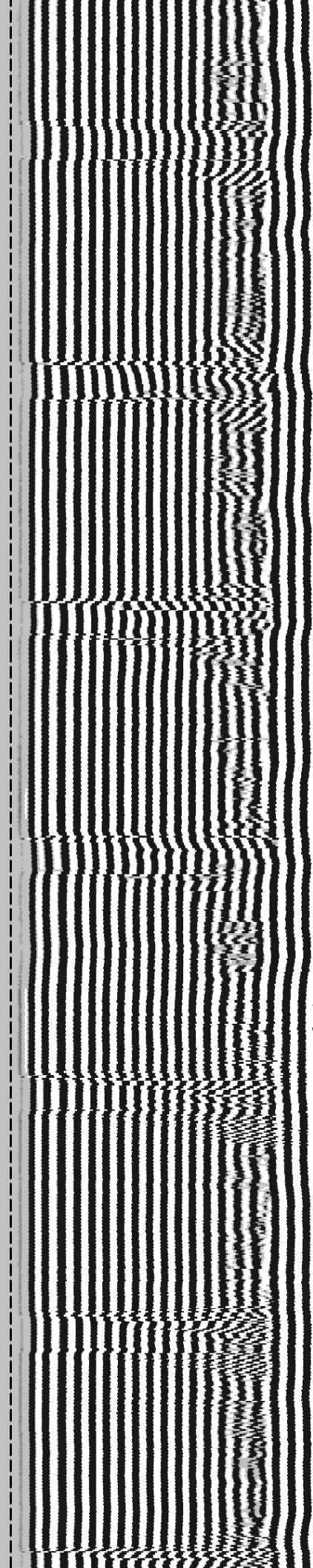
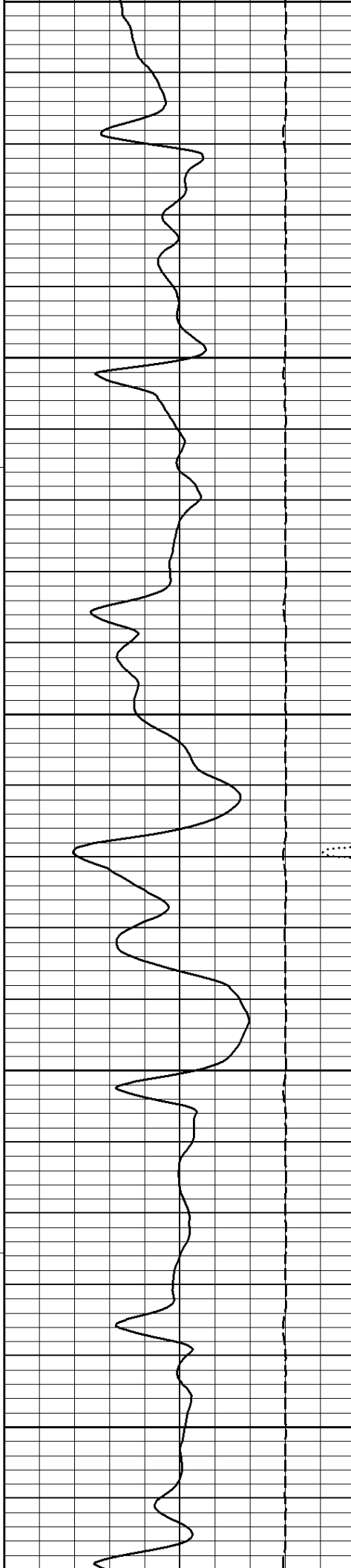


2950

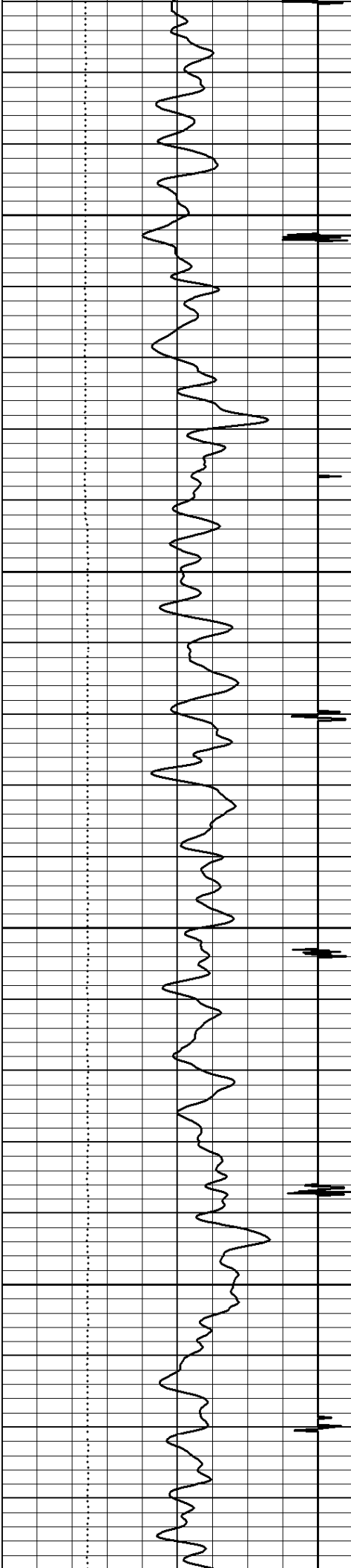
3000

3050

3100





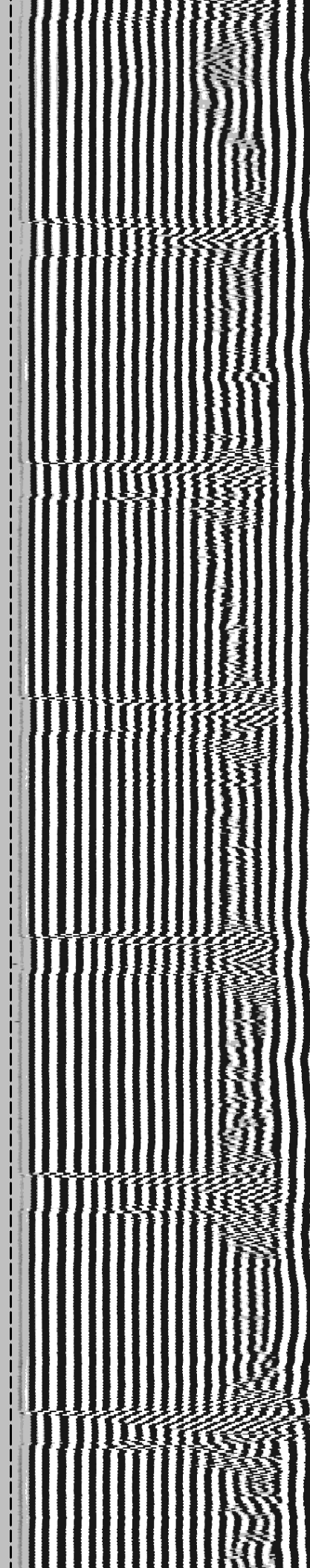
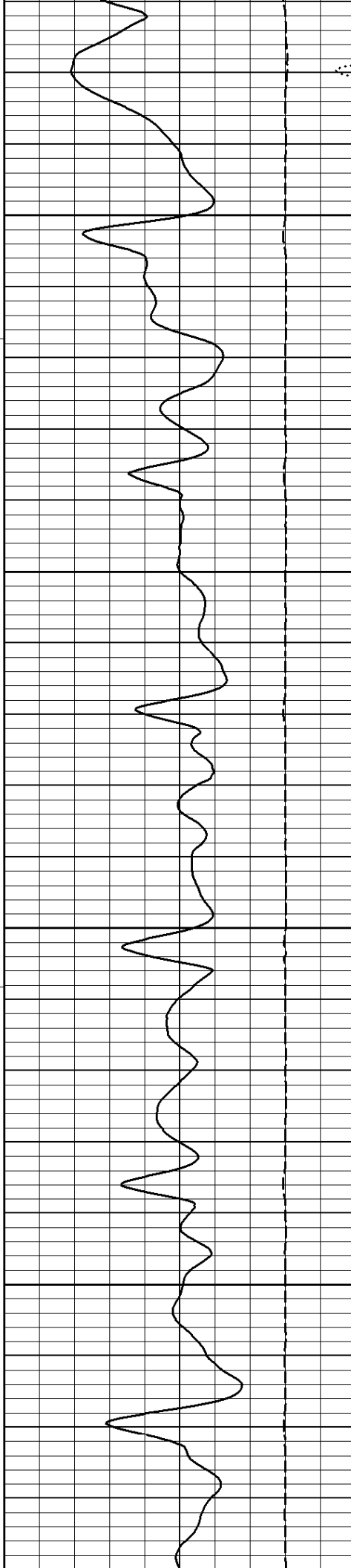


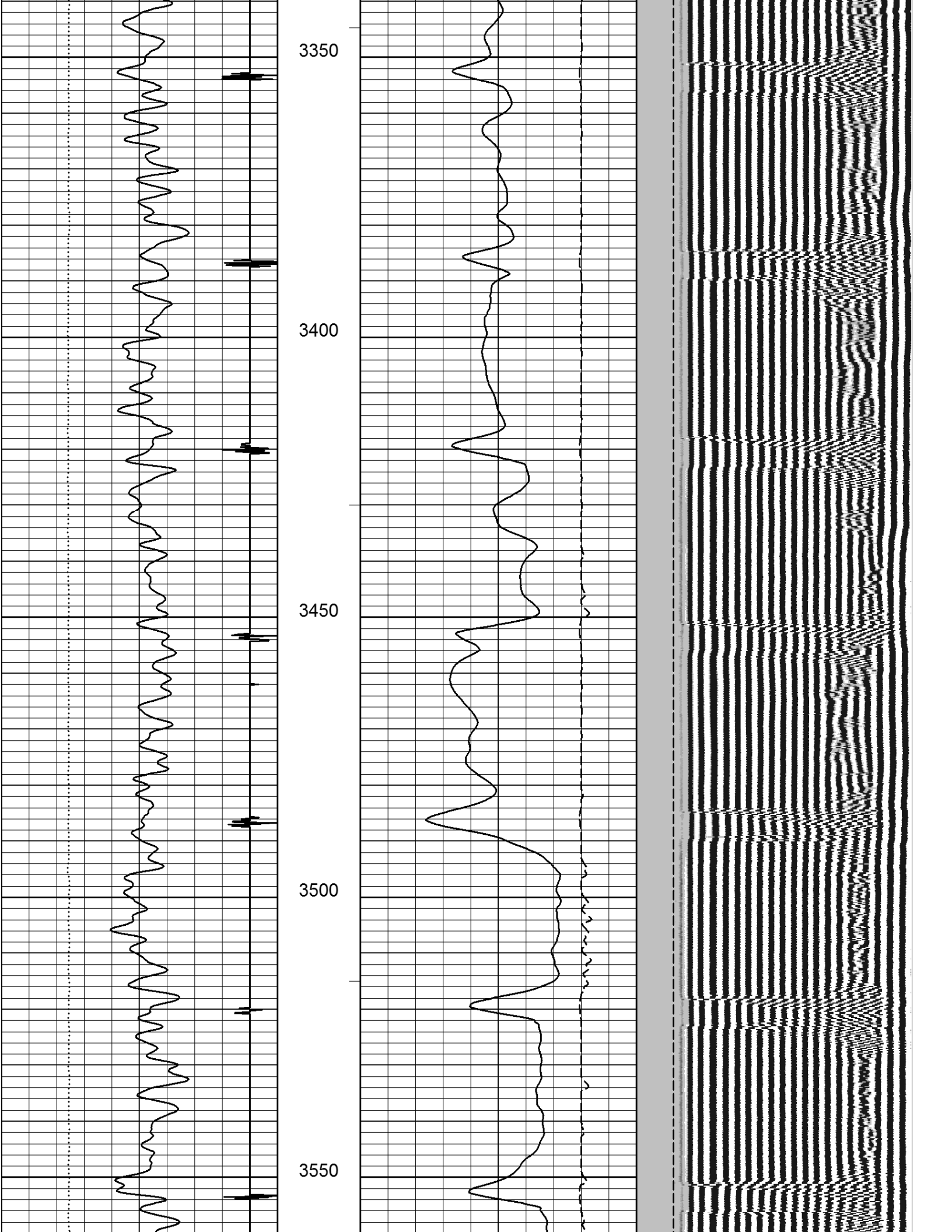
3150

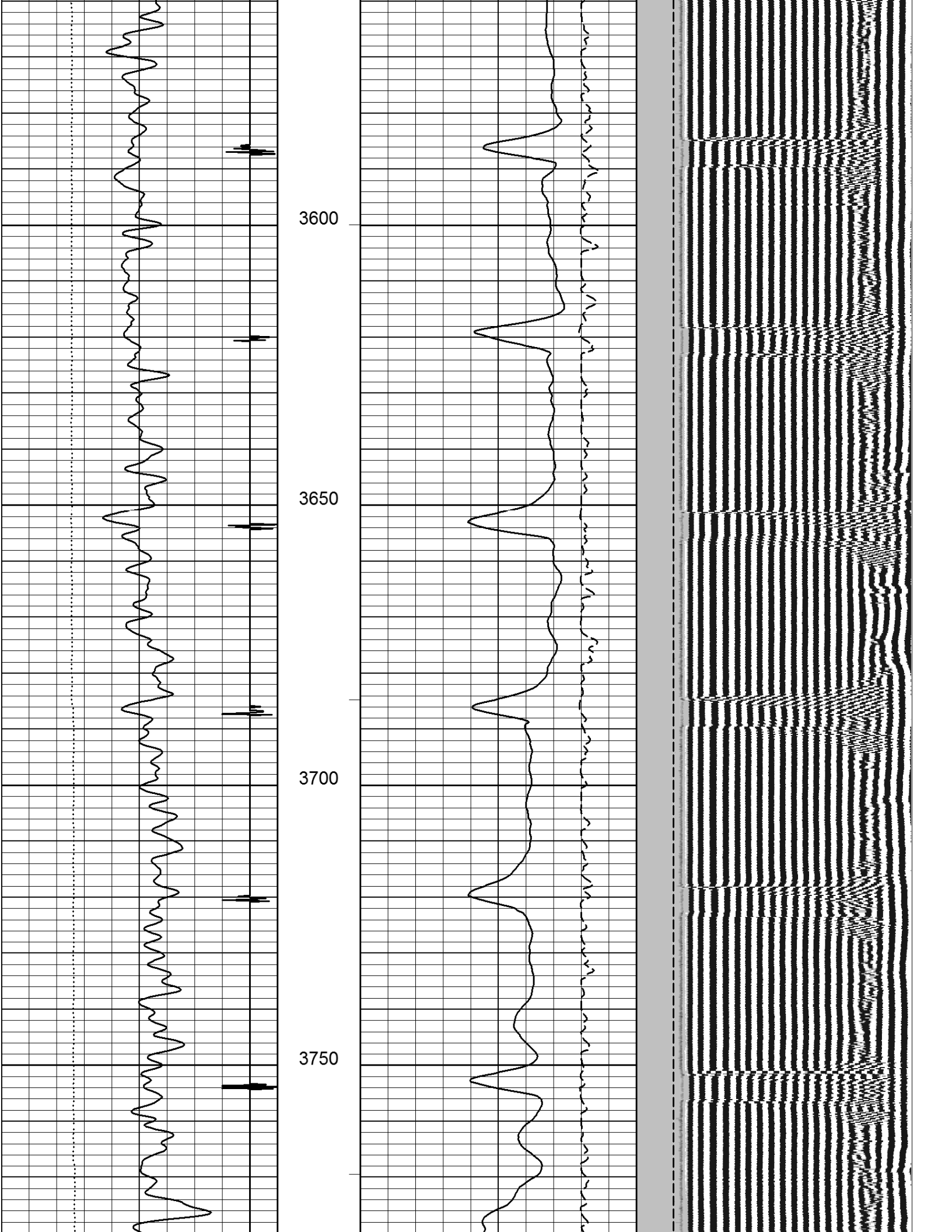
3200

3250

3300









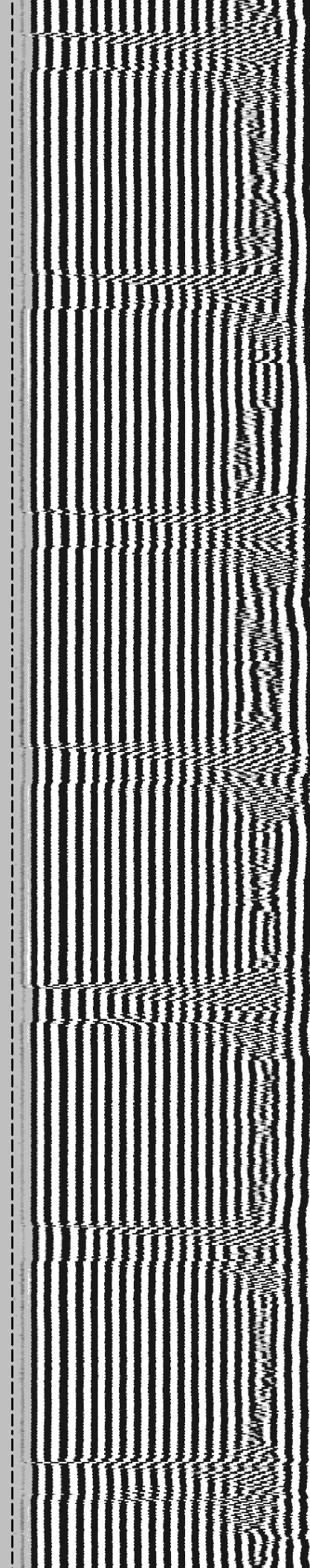
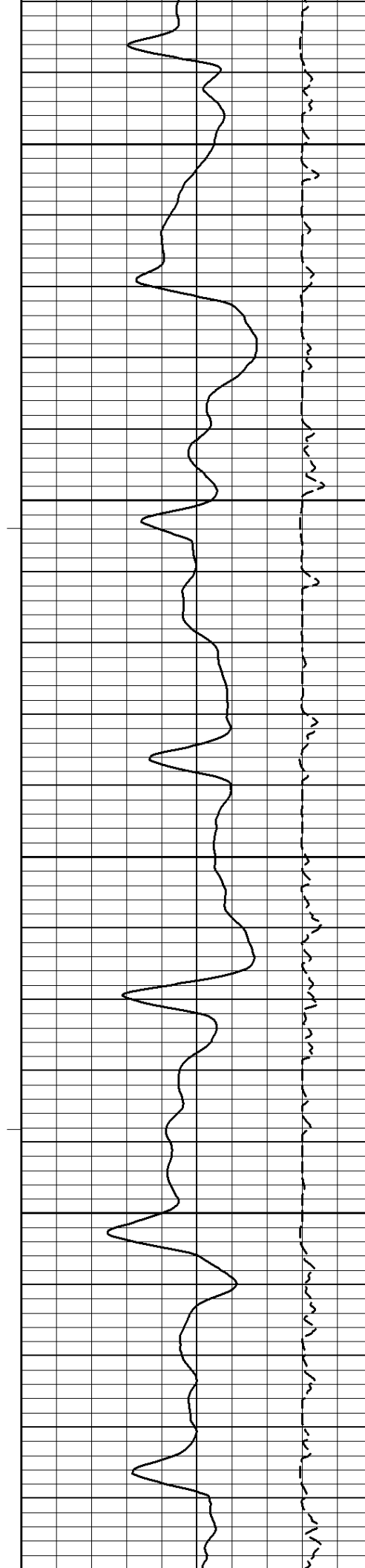
3800

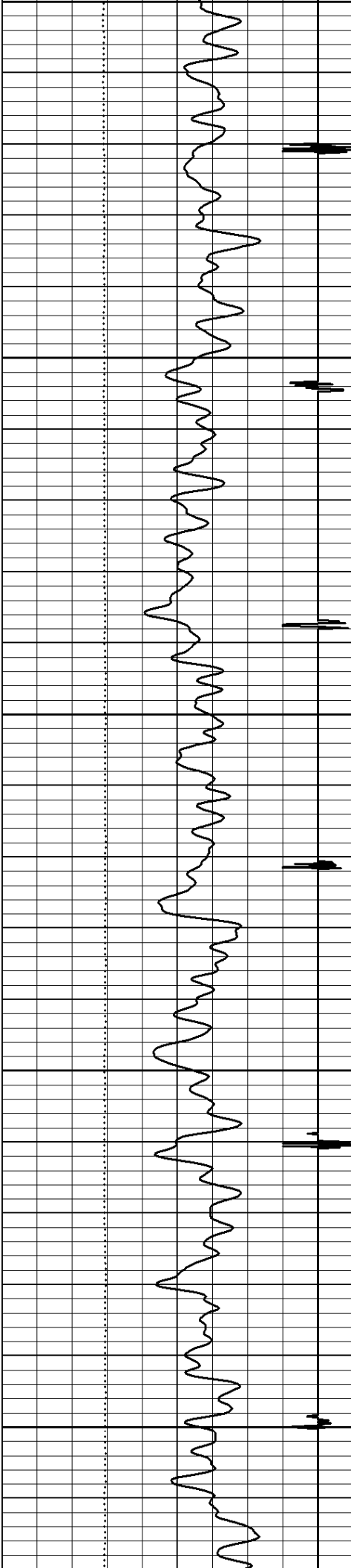
3850

3900

3950

4000



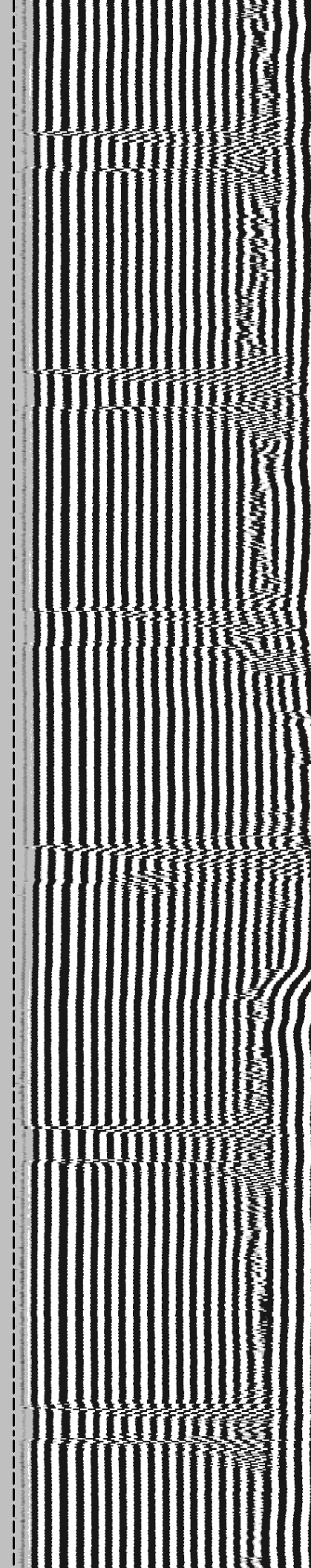
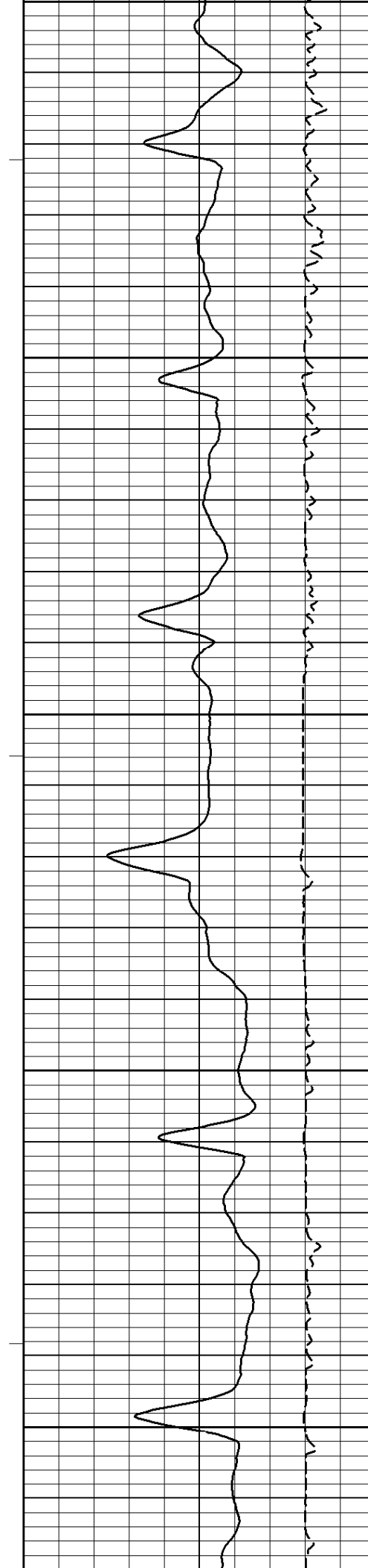


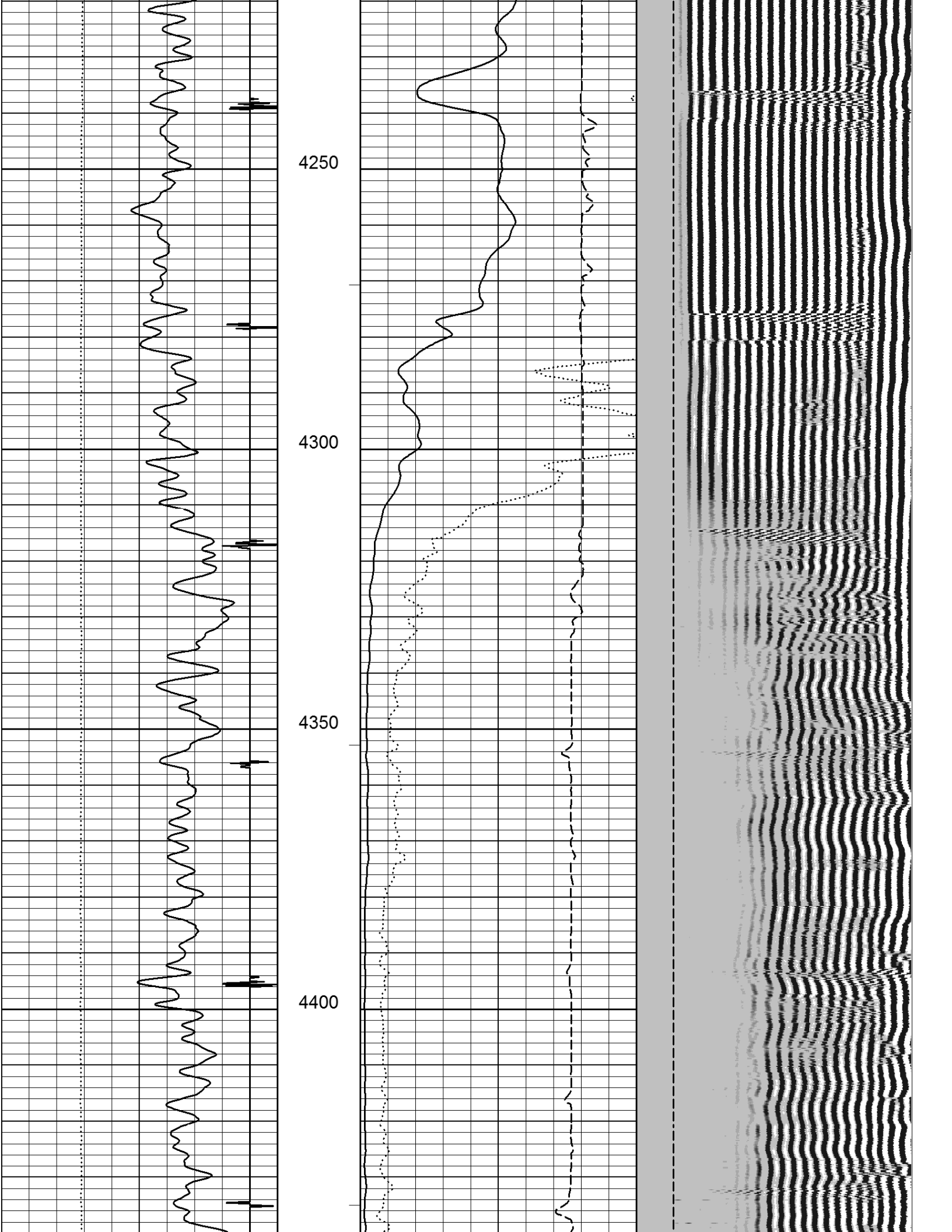
4050

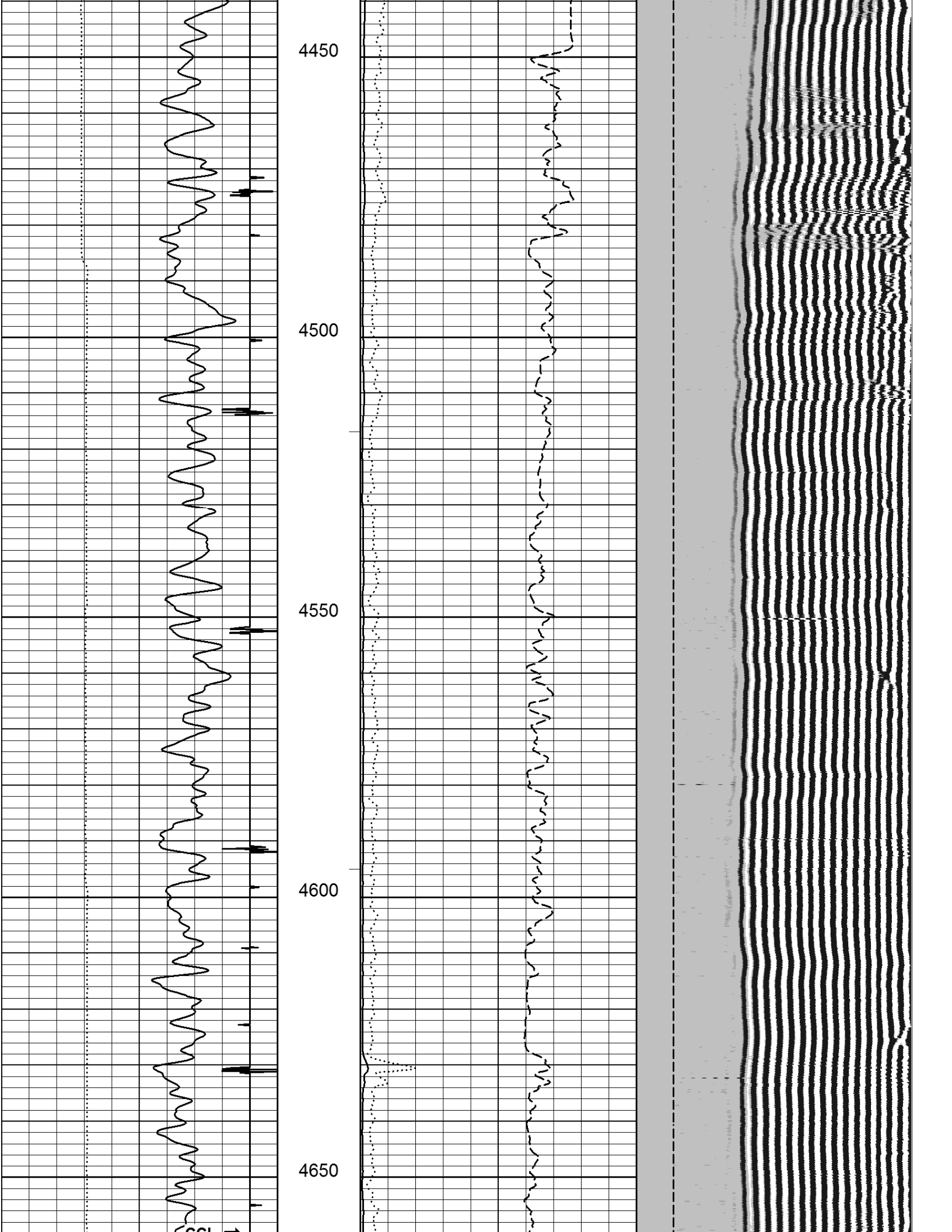
4100

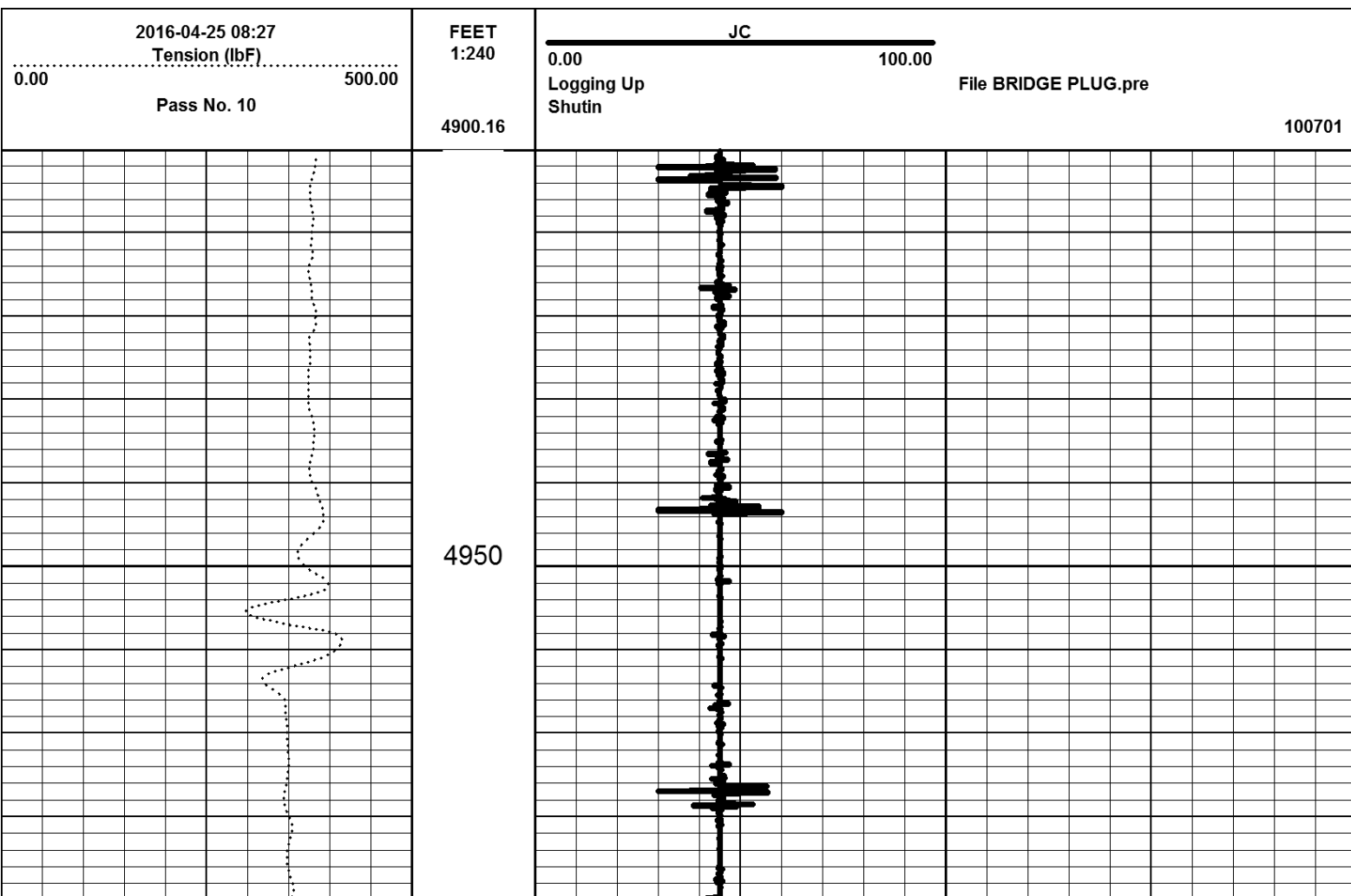
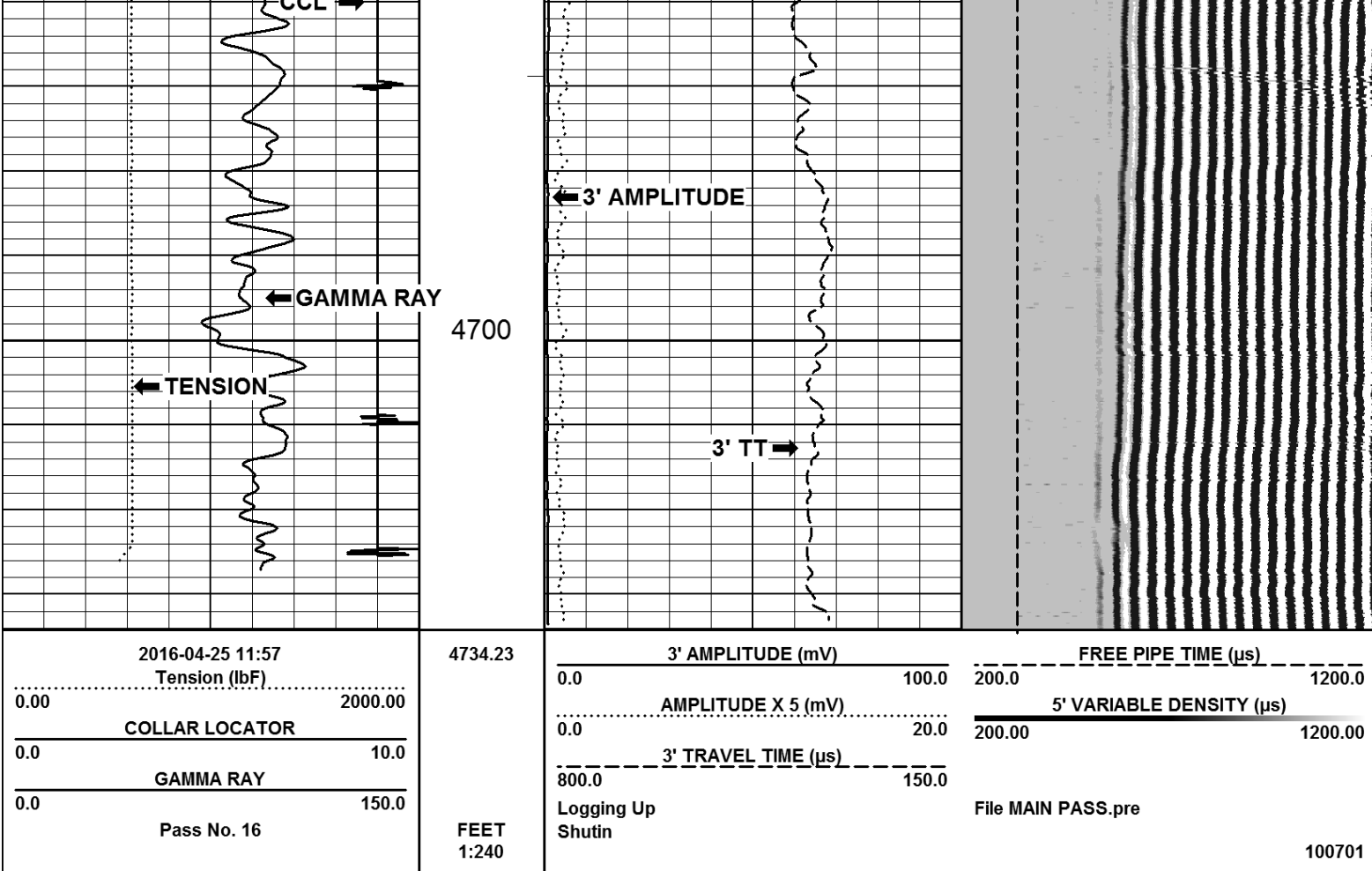
4150

4200

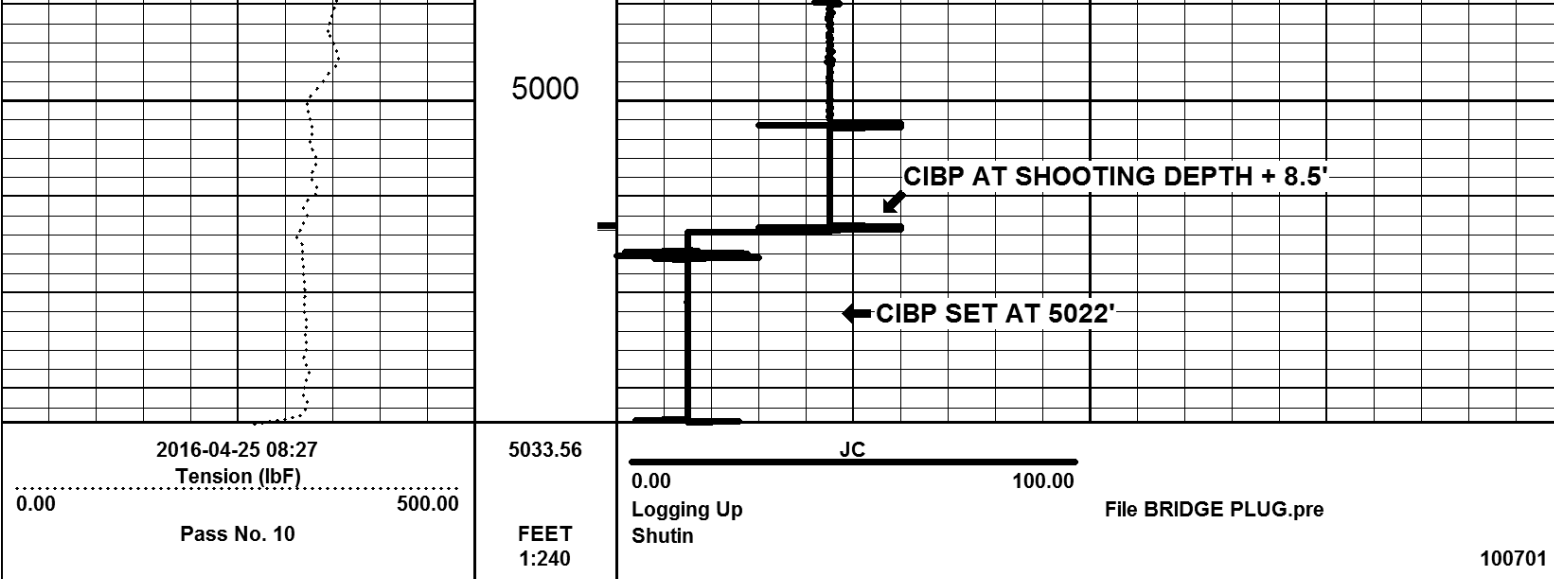












Company ENERGY SEARCH COMPANY

Well TSUZUKI #6

Field

County ADAMS

State COLORADO

1/4'S SWNW SEC. 27 TWP. 1S RGE. 67W