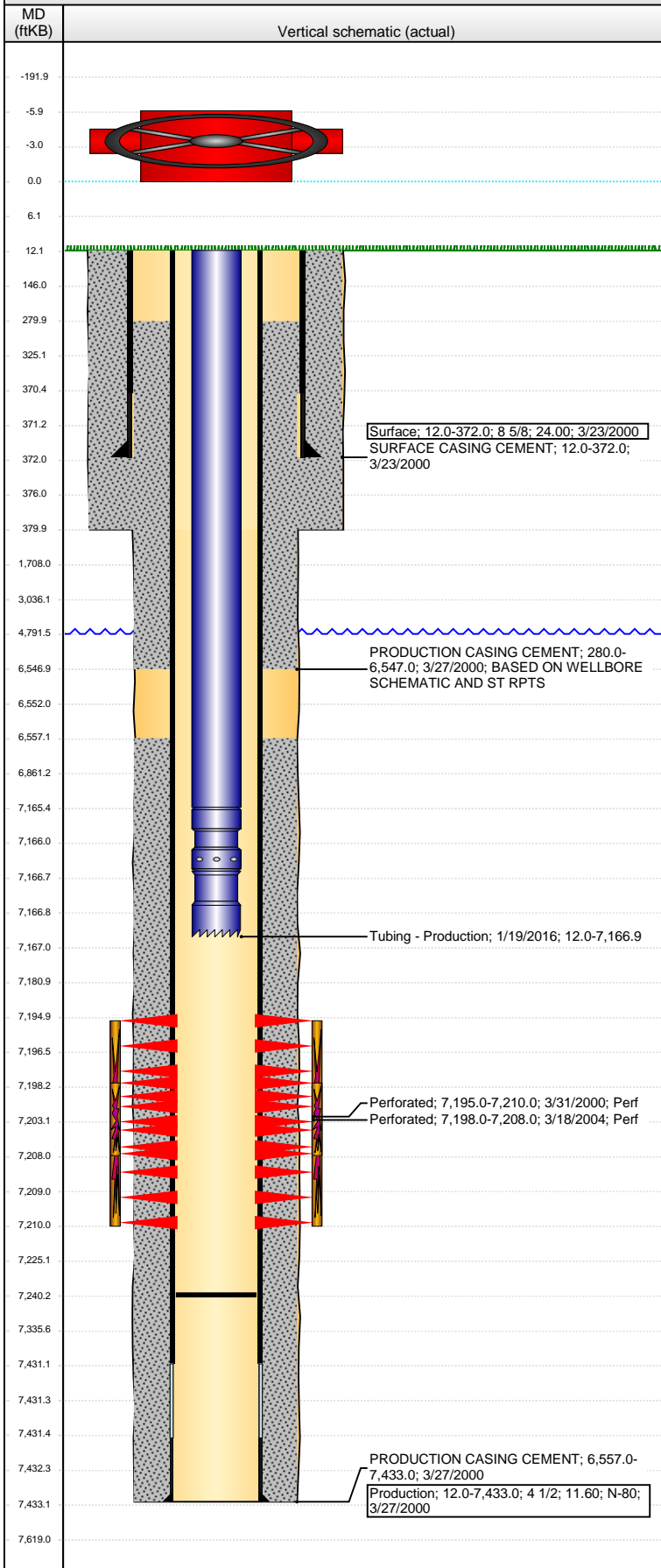


Well Name: EHRLICH 13-22

VERTICAL - ORIGINAL HOLE, 6/2/2016 8:34:38 AM



Well Header

API 05-123-19846	Business Unit DJ BASIN	District 15	Well Config VERTICAL
Original KB Elevation (ft) 4,775	KB - GL / MSL (ftKB) 12.00	Spud Date 3/23/2000	P & A Date

Comment

DISCREPANCY: DRL RPT & ST CMP HAS TD @ 7432' BUT PROD CSG SET AT 7433'

Directions To Well

HWY 60 AND CR 46 WEST 1.5 SOUTH 50' WEST ALONG FIELD .4 SOUTH .1 INTO

Congressional Location

Quarter 1	Quarter 2	Quarter 3	Quarter 4	Section	Township	Twnshp N...	Range	Rng E/W Dir
	S2	NW	NW	13	4	N	67	W

Bottom Hole Location

North-South Distance (ft)	From N or S Line	East-West Distance (ft)	From E or W Line

Plug Back Total Depths

Date	Depth (ftKB)	Method	Com
3/27/2000	7,405.0	CASING TALLY	PBTD ON CASING TALLY
3/30/2000	7,394.0	CASED HOLE LOG	DEPTH LOGGER ON CBL
3/31/2004	7,270.0	TAG	CLEAN OUT TO LAND TUBING
1/15/2016	7,240.0		NO TAG

Wellbore Sections

Section Des	Size (in)	Act Top, MD (ftKB)	Act Btm, MD (ftKB)
SURFACE	12 1/4	12	380
PRODUCTION	7 7/8	380	7,433

Zone Statuses

Zone Name	Status Date	Status	Fluid Type	Job	Prod Method
CODELL	4/11/2000	PR		DRILLING/CO...	
CODELL	3/31/2004	PR		RE-FRAC, 3/17...	

Casing Strings

Surface, 372.0ftKB

Casing Description	Run Date	OD (in)	Wt/Len (l...	Grade	Top, MD (ft...	MD (ftKB)
Surface	3/23/2000	8 5/8	24.00		12.0	372.0

Production, 7,433.0ftKB

Casing Description	Run Date	OD (in)	Wt/Len (l...	Grade	Top, MD (ft...	MD (ftKB)
Production	3/27/2000	4 1/2	11.60	N-80	12.0	7,433.0

Cement

Description	Top Depth (ftKB)	Bottom Depth (ftKB)
SURFACE CASING CEMENT	12.0	372.0
PRODUCTION CASING CEMENT	280.0	6,547.0
PRODUCTION CASING CEMENT	6,557.0	7,433.0

Tubing Strings

Tubing Description	Run Date	String...	ID (in)	Wt (lb/ft)	Grade	Len (ft)	Set De...
Tubing	3/31/2004	2 3/8				7,163.00	
Tubing - Production	1/19/2016	2 3/8	1.995	4.70	J-55	7,154.94	

Tubing Components

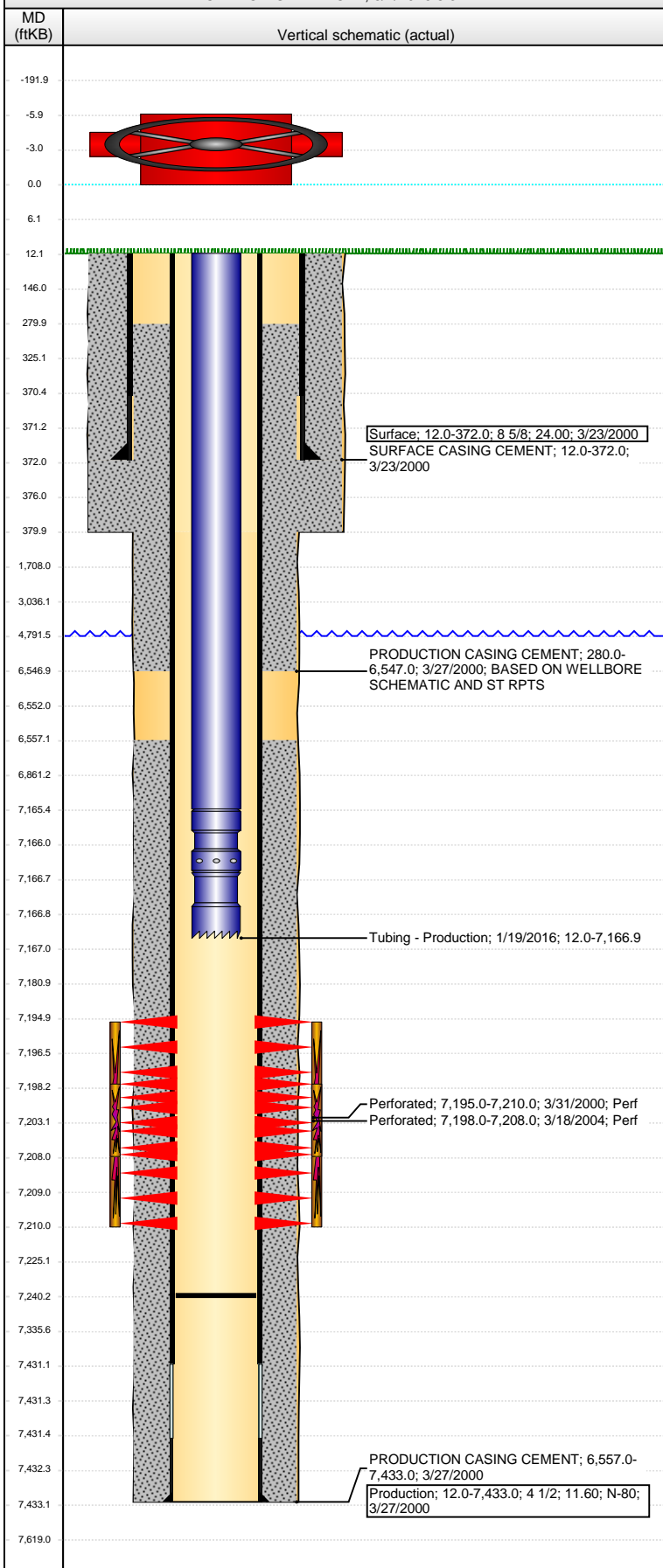
Item Des	OD (in)	Wt (lb/ft)	Grade	Jts	Len (ft)	Btm (ftKB)	Btm (TVD) (ftKB)
Tubing	2 3/8	4.70	J-55	223	7,153.34	7,165.3	
Pump Seating Nipple	2 3/8	1.10	N-80	1	1.20	7,166.5	
Notched collar	2 3/8		J-55	1	0.40	7,166.9	

Perforation Data

Zone	Bnch/St g	Entered Shot Total	Top (ftKB)	Btm (ftKB)	Date
CODELL, ORIGINAL HOLE		60	7,195.00	7,210.00	3/31/2000
CODELL, ORIGINAL HOLE		40	7,198.00	7,208.00	3/18/2004

Well Name: EHRLICH 13-22

VERTICAL - ORIGINAL HOLE, 6/2/2016 8:34:41 AM



Stimulations & Treatments

Date 4/6/2000	Zone CODELL, ORIGINAL HOLE	Primary Job Type DRILLING/COMPLETION - ORIGINAL
Technical Result	Tech Result Details	Tech Result Note

Comment

Date 3/30/2004	Zone CODELL, ORIGINAL HOLE	Primary Job Type RE-FRAC
Technical Result	Tech Result Details	Tech Result Note

Comment

Other In Hole

Run Date	Des	OD (in)	Top (ftKB)	Btm (ftKB)

Logs

Date	Type	Top, MD (ftKB)	Btm, MD (ftKB)
3/26/2000	COMPENSATED DENSITY	4,100.0	7,420.0
3/26/2000	INDUCTION	372.0	7,437.0
3/30/2000	CEMENT BOND	6,008.0	7,389.0