



Kerr-McGee Oil & Gas Onshore LP

A subsidiary of Anadarko Petroleum Corporation

1099 18th Street
Denver, CO 80202
720-929-6000

May 6, 2016

Matt Lepore
Director, Colorado Oil and Gas Conservation Commission
Department of Natural Resources
The Chancery Building
1120 Lincoln Street, Suite 801
Denver, CO 80203

Re: **30 Day Certification Letter - 318A.e**
CAMENISCH 4N-35HZ (Doc #401040035)
Township 1 North, Range 67 West
Section 2: SW/4SW/4
Unit Acreage: 480
Unit Spacing: 01N-67W-Sec 02: W/2
01N-67W-Sec 11: N/2/NW/4
02N-67W-Sec 35: S/2/SW/4
Weld County, Colorado

Dear Director Lepore:

Kerr-McGee Oil and Gas Onshore LP ("KMG") hereby certifies that a thirty (30) day notice has been given by certified mail to all mineral owners in the proposed wellbore spacing unit. We have not received any objections to such well location, proposed spacing unit, or additional producing formation. KMG hereby respectfully requests approval of this boundary well.

If you have any questions or issues regarding this permit, please contact Cheryl Light at (720) 929-6461.

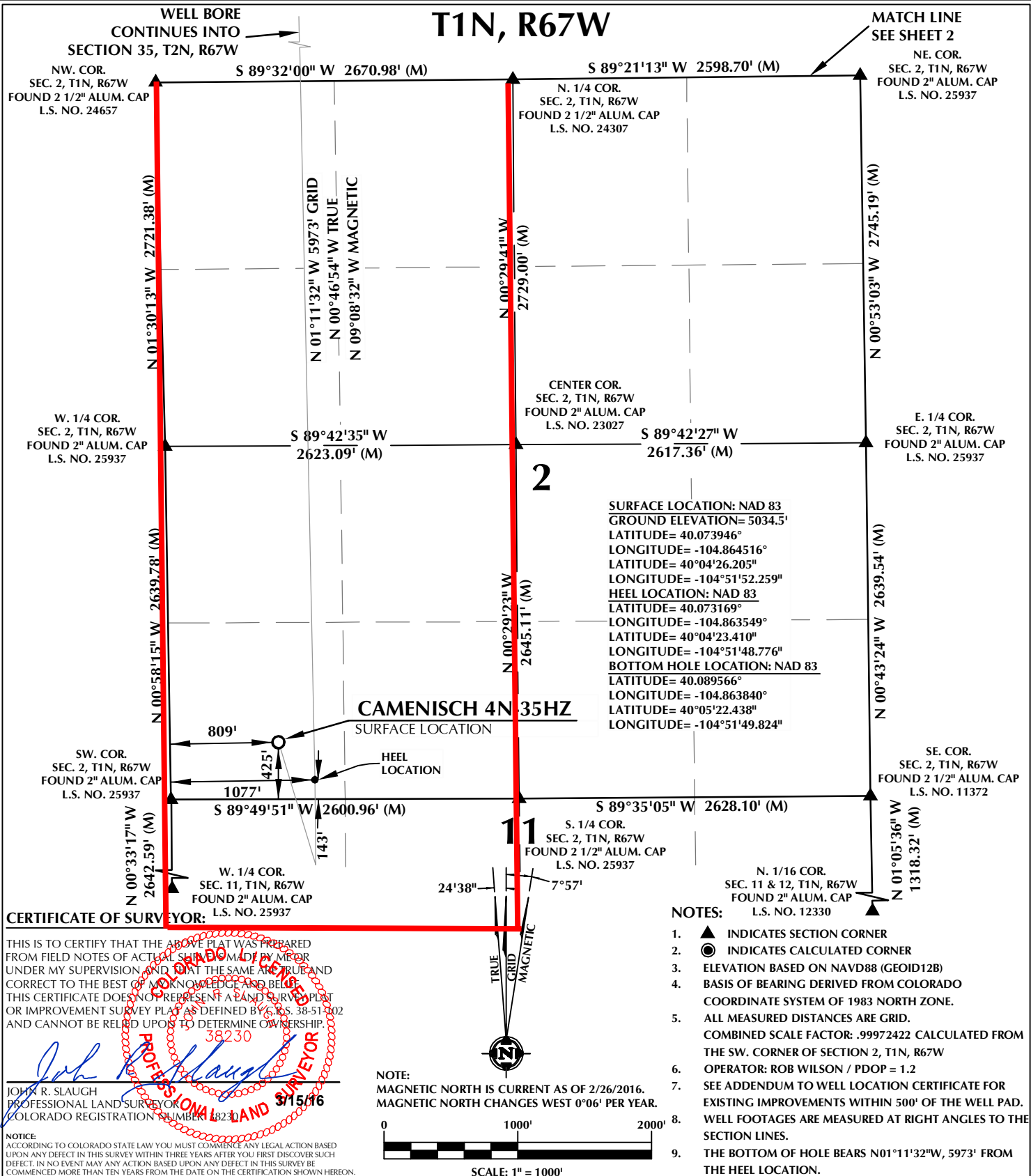
Very truly yours,

KERR-McGEE OIL AND GAS ONSHORE LP

A handwritten signature in blue ink that reads 'Cheryl Light'.

Cheryl Light
Senior Regulatory Analyst

T1N, R67W



CERTIFICATE OF SURVEYOR:

THIS IS TO CERTIFY THAT THE ABOVE PLAT WAS PREPARED FROM FIELD NOTES OF ACTUAL SURVEY MADE BY ME OR UNDER MY SUPERVISION AND THAT THE SAME ARE TRUE AND CORRECT TO THE BEST OF MY KNOWLEDGE AND BELIEF. THIS CERTIFICATE DOES NOT REPRESENT A LAND SURVEY PLAT OR IMPROVEMENT SURVEY PLAT AS DEFINED BY C.S. 38-51-102 AND CANNOT BE RELIED UPON TO DETERMINE OWNERSHIP.

JOHN R. SLAUGH
PROFESSIONAL LAND SURVEYOR
COLORADO REGISTRATION NUMBER 18230

NOTICE: ACCORDING TO COLORADO STATE LAW YOU MUST COMMENCE ANY LEGAL ACTION BASED UPON ANY DEFECT IN THIS SURVEY WITHIN THREE YEARS AFTER YOU FIRST DISCOVER SUCH DEFECT. IN NO EVENT MAY ANY ACTION BASED UPON ANY DEFECT IN THIS SURVEY BE COMMENCED MORE THAN TEN YEARS FROM THE DATE ON THE CERTIFICATION SHOWN HEREON.

WELL PAD - CAMENISCH 29C-35HZ

CAMENISCH 4N-35HZ
WELL LOCATION CERTIFICATE
425' FSL & 809' FWL SWSW (SURFACE)
143' FSL & 1077' FWL SWSW (HEEL)
LOCATED IN SECTION 2
T1N, R67W, 6TH P.M.
750' FSL & 1073' FWL SWSW (BOTTOM)
LOCATED IN SECTION 35
T2N, R67W, 6TH P.M.
WELD COUNTY, COLORADO

Kerr-McGee Oil &
Gas Onshore L.P.
1099 18th Street
Denver, Colorado 80202



CONSULTING, LLC

SHERIDAN OFFICE
1095 Saberton Avenue
Sheridan, Wyoming 82801
Phone 307-674-0609

LOVELAND OFFICE
1635 Foxtrail Drive, Suite 204
Loveland, Colorado 80538
Phone 970-776-4331

DRAFTED BY:	SJM	CHECKED BY:	JRS	SHEET NO:
DATE DRAFTED:	3/15/16	DATE SURVEYED:	11/19/15	1
REVISED:		FILE NAME:	15-50	1 OF 2

T2N, R67W

NW. COR.
SEC. 35, T2N, R67W
FOUND 3 1/4" ALUM. CAP
L.S. NO. 13258

NE. COR.
SEC. 35, T2N, R67W
FOUND 3 1/4" ALUM. CAP
L.S. NO. 22098

S 89°51'11" W 5269.88' (M)

N 00°28'21" W 2647.75' (M)

N 00°27'52" W 2629.17' (M)

W. 1/4 COR.
SEC. 35, T2N, R67W
FOUND 2" ALUM. CAP
L.S. NO. 25937

CENTER COR.
SEC. 35, T2N, R67W
FOUND 2" ALUM. CAP
NUMBER ILLEGIBLE

E. 1/4 COR.
SEC. 35, T2N, R67W
FOUND 2 1/2" ALUM. CAP
L.S. NO. 34980

S 89°39'02" W
2635.09' (M)

S 89°39'06" W
2634.36' (M)

35

SURFACE LOCATION: NAD 83
GROUND ELEVATION= 5034.5'
LATITUDE= 40.073946°
LONGITUDE= -104.864516°
LATITUDE= 40°04'26.205"
LONGITUDE= -104°51'52.259"
HEEL LOCATION: NAD 83
LATITUDE= 40.073169°
LONGITUDE= -104.863549°
LATITUDE= 40°04'23.410"
LONGITUDE= -104°51'48.776"
BOTTOM HOLE LOCATION: NAD 83
LATITUDE= 40.089566°
LONGITUDE= -104.863840°
LATITUDE= 40°05'22.438"
LONGITUDE= -104°51'49.824"

N 00°28'42" W 2647.91' (M)

N 00°29'01" W 2628.92' (M)

SW. COR.
SEC. 35, T2N, R67W
FOUND 2 1/2" ALUM. CAP
L.S. NO. 24657

S 89°32'00" W 2670.98' (M)

S. 1/4 COR.
SEC. 35, T2N, R67W
FOUND 2 1/2" ALUM. CAP
L.S. NO. 24307

SE. COR.
SEC. 35, T2N, R67W
FOUND 2 1/2" ALUM. CAP
L.S. NO. 25937

MATCH LINE
SEE SHEET 1

CERTIFICATE OF SURVEYOR:

THIS IS TO CERTIFY THAT THE ABOVE PLAT WAS PREPARED FROM FIELD NOTES OF ACTUAL SURVEY MADE BY ME OR UNDER MY SUPERVISION AND THAT THE SAME ARE TRUE AND CORRECT TO THE BEST OF MY KNOWLEDGE AND BELIEF. THIS CERTIFICATE DOES NOT REPRESENT A LAND SURVEY PLAT OR IMPROVEMENT SURVEY PLAT AS DEFINED BY C.R.S. 38-51-302 AND CANNOT BE RELIED UPON TO DETERMINE OWNERSHIP.

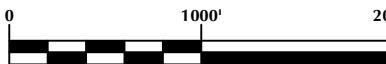
JOHN R. SLAUGH
PROFESSIONAL LAND SURVEYOR
COLORADO REGISTRATION NUMBER 18230

NOTICE:
ACCORDING TO COLORADO STATE LAW YOU MUST COMMENCE ANY LEGAL ACTION BASED UPON ANY DEFECT IN THIS SURVEY WITHIN THREE YEARS AFTER YOU FIRST DISCOVER SUCH DEFECT. IN NO EVENT MAY ANY ACTION BASED UPON ANY DEFECT IN THIS SURVEY BE COMMENCED MORE THAN TEN YEARS FROM THE DATE ON THE CERTIFICATION SHOWN HEREON.

24'38" 7°57'



NOTE:
MAGNETIC NORTH IS CURRENT AS OF 2/26/2016.
MAGNETIC NORTH CHANGES WEST 0°06' PER YEAR.



SCALE: 1" = 1000'

NOTES:

1. ▲ INDICATES SECTION CORNER
2. ● INDICATES CALCULATED CORNER
3. ELEVATION BASED ON NAVD88 (GEOID12B)
4. BASIS OF BEARING DERIVED FROM COLORADO COORDINATE SYSTEM OF 1983 NORTH ZONE.
5. ALL MEASURED DISTANCES ARE GRID.
COMBINED SCALE FACTOR: .99972422 CALCULATED FROM THE SW. CORNER OF SECTION 2, T1N, R67W
6. OPERATOR: ROB WILSON / PDOP = 1.2
7. SEE ADDENDUM TO WELL LOCATION CERTIFICATE FOR EXISTING IMPROVEMENTS WITHIN 500' OF THE WELL PAD.
8. WELL FOOTAGES ARE MEASURED AT RIGHT ANGLES TO THE SECTION LINES.
9. THE BOTTOM OF HOLE BEARS N01°11'32"W, 5973' FROM THE HEEL LOCATION.

WELL PAD - CAMENISCH 29C-35HZ

CAMENISCH 4N-35HZ
WELL LOCATION CERTIFICATE
425' FSL & 809' FWL SWSW (SURFACE)
143' FSL & 1077' FWL SWSW (HEEL)
LOCATED IN SECTION 2
T1N, R67W, 6TH P.M.
750' FSL & 1073' FWL SWSW (BOTTOM)
LOCATED IN SECTION 35
T2N, R67W, 6TH P.M.
WELD COUNTY, COLORADO

Kerr-McGee Oil &
Gas Onshore L.P.
1099 18th Street
Denver, Colorado 80202



CONSULTING, LLC

SHERIDAN OFFICE
1095 Saberton Avenue
Sheridan, Wyoming 82801
Phone 307-674-0609

LOVELAND OFFICE
1635 Foxtrail Drive, Suite 204
Loveland, Colorado 80538
Phone 970-776-4331

DRAFTED BY:	SJM	CHECKED BY:	JRS	SHEET NO:
DATE DRAFTED:	3/15/16	DATE SURVEYED:	11/19/15	2
REVISED:		FILE NAME:	15-50	2 OF 2