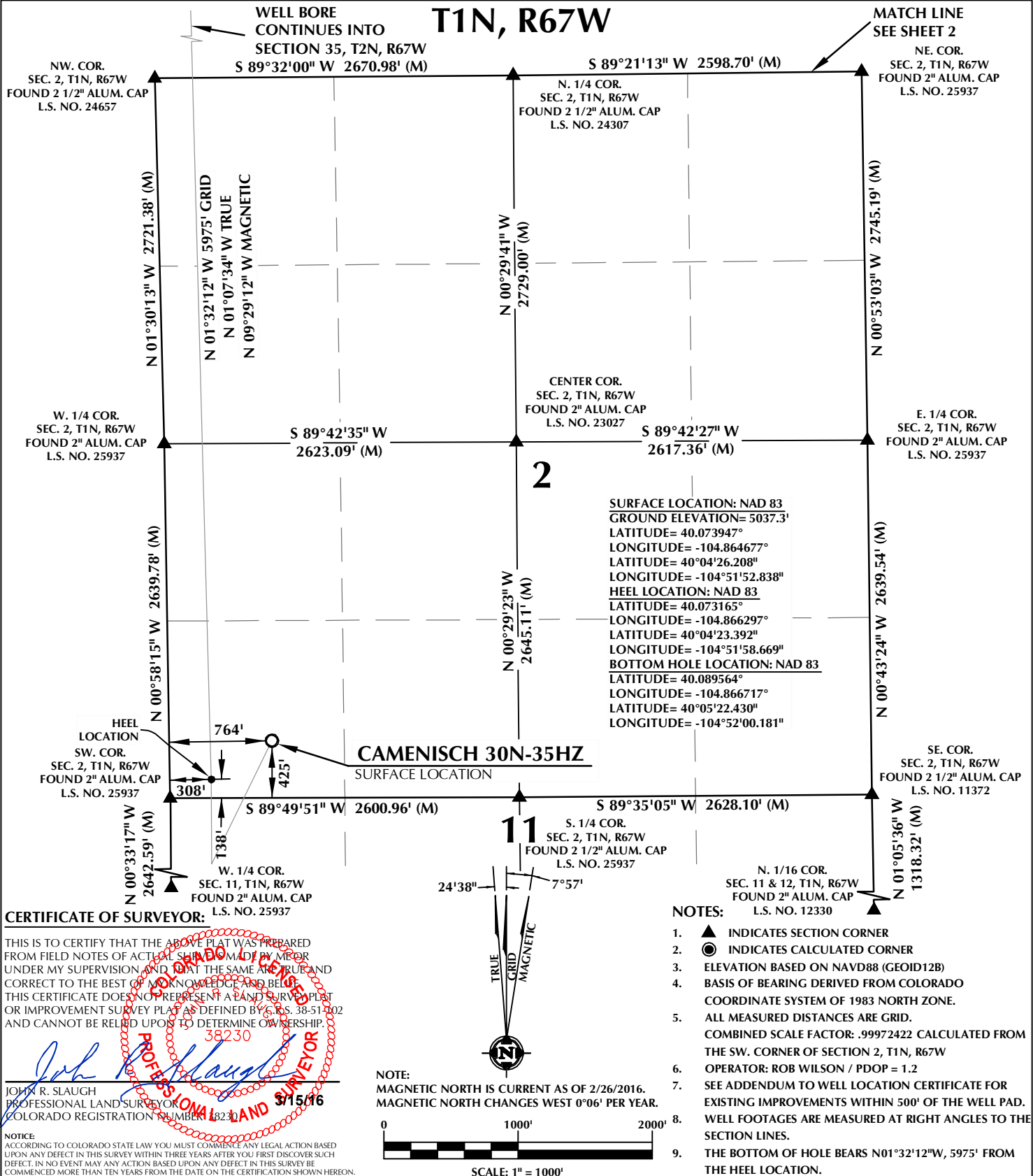


# T1N, R67W



## WELL PAD - CAMENISCH 29C-35HZ

CAMENISCH 30N-35HZ  
WELL LOCATION CERTIFICATE  
425' FSL & 764' FWL SWSW (SURFACE)  
138' FSL & 308' FWL SWSW (HEEL)  
LOCATED IN SECTION 2  
T1N, R67W, 6TH P.M.  
750' FSL & 268' FWL SWSW (BOTTOM)  
LOCATED IN SECTION 35  
T2N, R67W, 6TH P.M.  
WELD COUNTY, COLORADO

**Kerr-McGee Oil &  
Gas Onshore L.P.**

**1099 18th Street  
Denver, Colorado 80202**



## CONSULTING, LLC

**SHERIDAN OFFICE**  
1095 Saberton Avenue  
Sheridan, Wyoming 82801  
Phone 307-674-0609

**LOVELAND OFFICE**  
1635 Foxtrail Drive, Suite 204  
Loveland, Colorado 80538  
Phone 970-776-4331

DRAFTED BY:	SJM	CHECKED BY:	JRS	SHEET NO:
DATE DRAFTED:	3/15/16	DATE SURVEYED:	11/19/15	1
REVISED:		FILE NAME:	15-50	1 OF 2

# T2N, R67W

NW. COR.  
SEC. 35, T2N, R67W  
FOUND 3 1/4" ALUM. CAP  
L.S. NO. 13258

NE. COR.  
SEC. 35, T2N, R67W  
FOUND 3 1/4" ALUM. CAP  
L.S. NO. 22098

S 89°51'11" W 5269.88' (M)

N 00°28'21" W 2647.75' (M)

N 00°28'35" W  
2638.44' (C)

N 00°27'52" W 2629.17' (M)

W. 1/4 COR.  
SEC. 35, T2N, R67W  
FOUND 2" ALUM. CAP  
L.S. NO. 25937

CENTER COR.  
SEC. 35, T2N, R67W  
FOUND 2" ALUM. CAP  
NUMBER ILLEGIBLE

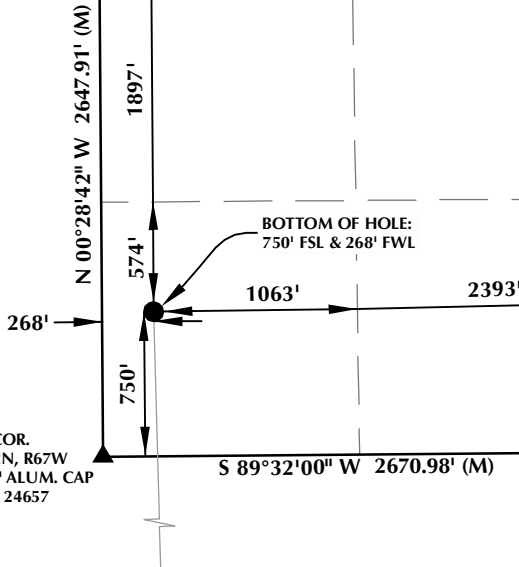
E. 1/4 COR.  
SEC. 35, T2N, R67W  
FOUND 2 1/2" ALUM. CAP  
L.S. NO. 34980

S 89°39'02" W  
2635.09' (M)

S 89°39'06" W  
2634.36' (M)

35

SURFACE LOCATION: NAD 83  
GROUND ELEVATION= 5037.3'  
LATITUDE= 40.073947°  
LONGITUDE= -104.864677°  
LATITUDE= 40°04'26.208"  
LONGITUDE= -104°51'52.838"  
HEEL LOCATION: NAD 83  
LATITUDE= 40.073165°  
LONGITUDE= -104.866297°  
LATITUDE= 40°04'23.392"  
LONGITUDE= -104°51'58.669"  
BOTTOM HOLE LOCATION: NAD 83  
LATITUDE= 40.089564°  
LONGITUDE= -104.866717°  
LATITUDE= 40°05'22.430"  
LONGITUDE= -104°52'00.181"

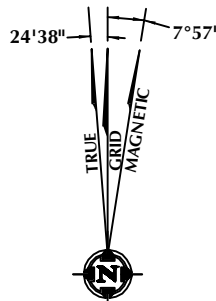


## CERTIFICATE OF SURVEYOR:

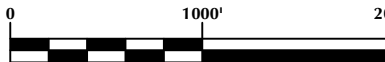
THIS IS TO CERTIFY THAT THE ABOVE PLAT WAS PREPARED FROM FIELD NOTES OF ACTUAL SURVEY MADE BY ME OR UNDER MY SUPERVISION AND THAT THE SAME ARE TRUE AND CORRECT TO THE BEST OF MY KNOWLEDGE AND BELIEF. THIS CERTIFICATE DOES NOT REPRESENT A LAND SURVEY PLAT OR IMPROVEMENT SURVEY PLAT AS DEFINED BY C.R.S. 38-51-302 AND CANNOT BE RELIED UPON TO DETERMINE OWNERSHIP.

JOHN R. SLAUGH  
PROFESSIONAL LAND SURVEYOR  
COLORADO REGISTRATION NUMBER 18230

NOTICE:  
ACCORDING TO COLORADO STATE LAW YOU MUST COMMENCE ANY LEGAL ACTION BASED UPON ANY DEFECT IN THIS SURVEY WITHIN THREE YEARS AFTER YOU FIRST DISCOVER SUCH DEFECT. IN NO EVENT MAY ANY ACTION BASED UPON ANY DEFECT IN THIS SURVEY BE COMMENCED MORE THAN TEN YEARS FROM THE DATE ON THE CERTIFICATION SHOWN HEREON.



NOTE:  
MAGNETIC NORTH IS CURRENT AS OF 2/26/2016.  
MAGNETIC NORTH CHANGES WEST 0°06' PER YEAR.



SCALE: 1" = 1000'

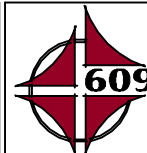
## NOTES:

1. ▲ INDICATES SECTION CORNER
2. ● INDICATES CALCULATED CORNER
3. ELEVATION BASED ON NAVD88 (GEOID12B)
4. BASIS OF BEARING DERIVED FROM COLORADO COORDINATE SYSTEM OF 1983 NORTH ZONE.
5. ALL MEASURED DISTANCES ARE GRID.  
COMBINED SCALE FACTOR: .99972422 CALCULATED FROM THE SW. CORNER OF SECTION 2, T1N, R67W
6. OPERATOR: ROB WILSON / PDOP = 1.2
7. SEE ADDENDUM TO WELL LOCATION CERTIFICATE FOR EXISTING IMPROVEMENTS WITHIN 500' OF THE WELL PAD.
8. WELL FOOTAGES ARE MEASURED AT RIGHT ANGLES TO THE SECTION LINES.
9. THE BOTTOM OF HOLE BEARS N01°32'12"W, 5975' FROM THE HEEL LOCATION.

## WELL PAD - CAMENISCH 29C-35HZ

CAMENISCH 30N-35HZ  
WELL LOCATION CERTIFICATE  
425' FSL & 764' FWL SWSW (SURFACE)  
138' FSL & 308' FWL SWSW (HEEL)  
LOCATED IN SECTION 2  
T1N, R67W, 6TH P.M.  
750' FSL & 268' FWL SWSW (BOTTOM)  
LOCATED IN SECTION 35  
T2N, R67W, 6TH P.M.  
WELD COUNTY, COLORADO

Kerr-McGee Oil &  
Gas Onshore L.P.  
1099 18th Street  
Denver, Colorado 80202



## CONSULTING, LLC

SHERIDAN OFFICE  
1095 Saberton Avenue  
Sheridan, Wyoming 82801  
Phone 307-674-0609

LOVELAND OFFICE  
1635 Foxtrail Drive, Suite 204  
Loveland, Colorado 80538  
Phone 970-776-4331

DRAFTED BY:	SJM	CHECKED BY:	JRS	SHEET NO:
DATE DRAFTED:	3/15/16	DATE SURVEYED:	11/19/15	2
REVISED:		FILE NAME:	15-50	2 OF 2