



Kerr-McGee Oil & Gas Onshore LP

A subsidiary of Anadarko Petroleum Corporation

1099 18th Street
Denver, CO 80202
720-929-6000

May 6, 2016

Matt Lepore
Director, Colorado Oil and Gas Conservation Commission
Department of Natural Resources
The Chancery Building
1120 Lincoln Street, Suite 801
Denver, CO 80203

CAMENISCH 3C-35HZ (Doc #401040032)

Township 1 North, Range 67 West

Section 2: SW/4SW/4

Unit Acreage: 480

Unit Spacing: 01N-67W-Sec 02: E/2W/2, W/2E/2

01N-67W-Sec 11: NE/4NW/4, NW/4NE/4

02N-67W-Sec 35: SE/4SW/4, SW/4SE/4

Weld County, Colorado

Dear Director Lepore:

Kerr McGee Oil and Gas Onshore LP ("KMG") hereby certifies that KMG owns one hundred percent (100%) of the leasehold interest in the mineral rights in the proposed spacing unit. KMG hereby respectfully requests approval of this boundary well.

If you have any questions or issues regarding this permit, please contact Cheryl Light at (720) 929-6461.

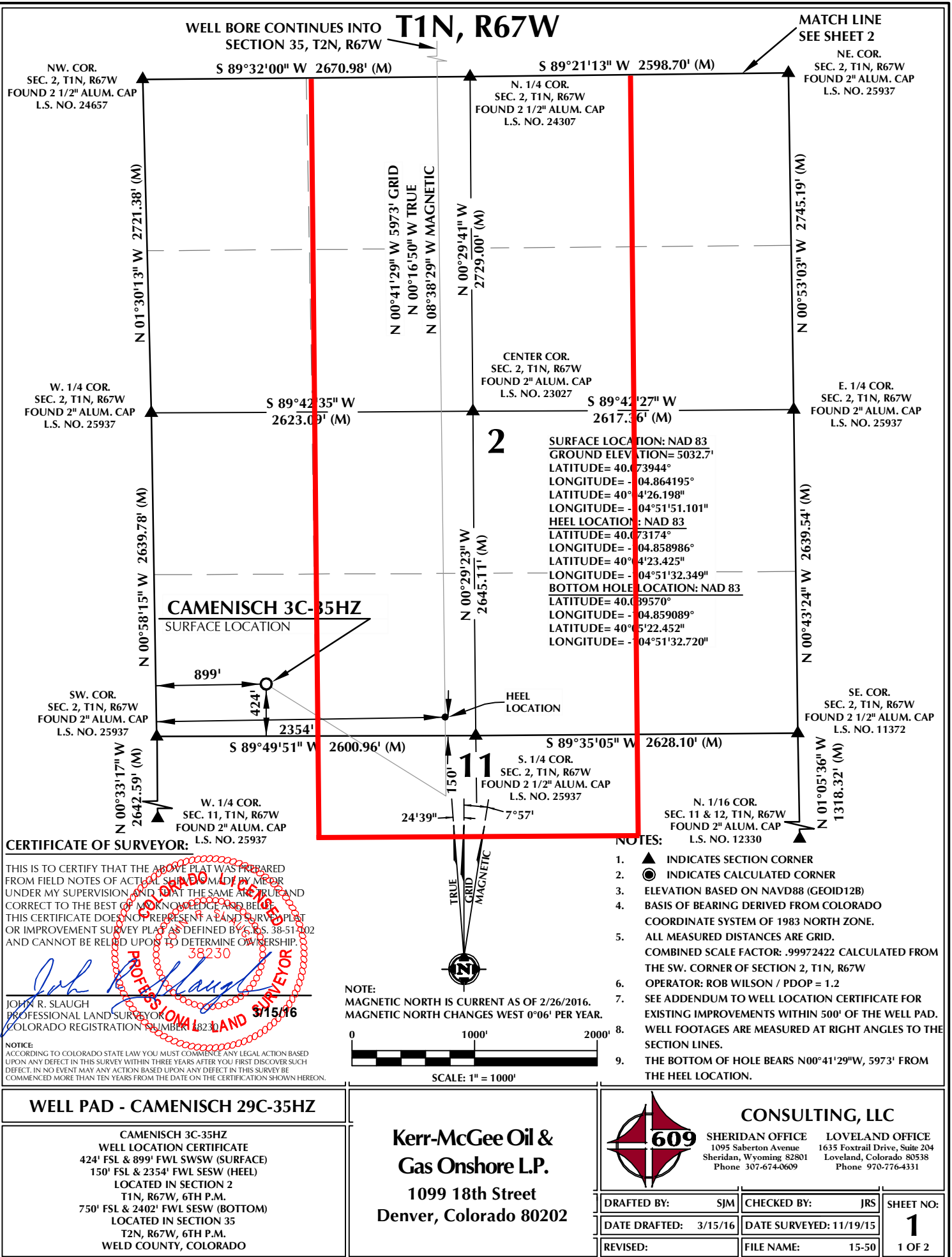
Very truly yours,

KERR-McGEE OIL AND GAS ONSHORE LP

A handwritten signature in blue ink that reads 'Cheryl Light'.

Cheryl Light
Senior Regulatory Analyst

PROPOSED SPACING UNIT



T2N, R67W

NW. COR.
SEC. 35, T2N, R67W
FOUND 3 1/4" ALUM. CAP
L.S. NO. 13258

NE. COR.
SEC. 35, T2N, R67W
FOUND 3 1/4" ALUM. CAP
L.S. NO. 22098

S 89°51'11" W 5269.88' (M)

N 00°28'21" W 2647.75' (M)

N 00°27'52" W 2629.17' (M)

N 00°28'35" W
2638.44' (C)

CENTER COR.
SEC. 35, T2N, R67W
FOUND 2" ALUM. CAP
NUMBER ILLEGIBLE

W. 1/4 COR.
SEC. 35, T2N, R67W
FOUND 2" ALUM. CAP
L.S. NO. 25937

E. 1/4 COR.
SEC. 35, T2N, R67W
FOUND 2 1/2" ALUM. CAP
L.S. NO. 34980

S 89°39'02" W
2635.09' (M)

S 89°39'06" W
2634.36' (M)

35

N 00°28'42" W 2647.91' (M)

N 00°29'01" W 2628.92' (M)

1893'

BOTTOM OF HOLE:
750' FSL & 2402' FWL

N 01°13'24" W
2642.76' (M)

SURFACE LOCATION: NAD 83
GROUND ELEVATION= 5032.7'
LATITUDE= 40.073944°
LONGITUDE= -104.864195°
LATITUDE= 40°04'26.198"
LONGITUDE= -104°51'51.101"
HEEL LOCATION: NAD 83
LATITUDE= 40.073174°
LONGITUDE= -104.858986°
LATITUDE= 40°04'23.425"
LONGITUDE= -104°51'32.349"
BOTTOM HOLE LOCATION: NAD 83
LATITUDE= 40.089570°
LONGITUDE= -104.859089°
LATITUDE= 40°05'22.452"
LONGITUDE= -104°51'32.720"

2402'

1072'

259'

750'

SW. COR.
SEC. 35, T2N, R67W
FOUND 2 1/2" ALUM. CAP
L.S. NO. 24657

S 89°32'00" W 2670.98' (M)

S 89°21'13" W 2598.70' (M)

S. 1/4 COR.
SEC. 35, T2N, R67W
FOUND 2 1/2" ALUM. CAP
L.S. NO. 24307

MATCH LINE
SEE SHEET 1

24'39" 7°57'

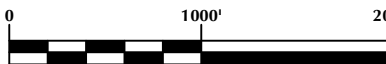
CERTIFICATE OF SURVEYOR:

THIS IS TO CERTIFY THAT THE ABOVE PLAT WAS PREPARED FROM FIELD NOTES OF ACTUAL SURVEY MADE BY ME OR UNDER MY SUPERVISION AND THAT THE SAME ARE TRUE AND CORRECT TO THE BEST OF MY KNOWLEDGE AND BELIEF. THIS CERTIFICATE DOES NOT REPRESENT A LAND SURVEY PLAT OR IMPROVEMENT SURVEY PLAT AS DEFINED BY C.R.S. 38-51-302 AND CANNOT BE RELIED UPON TO DETERMINE OWNERSHIP.

John R. Slaugh
JOHN R. SLAUGH
PROFESSIONAL LAND SURVEYOR
COLORADO REGISTRATION NUMBER 18230
3/15/16

NOTICE:
ACCORDING TO COLORADO STATE LAW YOU MUST COMMENCE ANY LEGAL ACTION BASED UPON ANY DEFECT IN THIS SURVEY WITHIN THREE YEARS AFTER YOU FIRST DISCOVER SUCH DEFECT. IN NO EVENT MAY ANY ACTION BASED UPON ANY DEFECT IN THIS SURVEY BE COMMENCED MORE THAN TEN YEARS FROM THE DATE ON THE CERTIFICATION SHOWN HEREON.

NOTE:
MAGNETIC NORTH IS CURRENT AS OF 2/26/2016.
MAGNETIC NORTH CHANGES WEST 0°06' PER YEAR.



SCALE: 1" = 1000'

NOTES:

1. ▲ INDICATES SECTION CORNER
2. ● INDICATES CALCULATED CORNER
3. ELEVATION BASED ON NAVD88 (GEOID12B)
4. BASIS OF BEARING DERIVED FROM COLORADO COORDINATE SYSTEM OF 1983 NORTH ZONE.
5. ALL MEASURED DISTANCES ARE GRID. COMBINED SCALE FACTOR: .99972422 CALCULATED FROM THE SW. CORNER OF SECTION 2, T1N, R67W
6. OPERATOR: ROB WILSON / PDOP = 1.2
7. SEE ADDENDUM TO WELL LOCATION CERTIFICATE FOR EXISTING IMPROVEMENTS WITHIN 500' OF THE WELL PAD.
8. WELL FOOTAGES ARE MEASURED AT RIGHT ANGLES TO THE SECTION LINES.
9. THE BOTTOM OF HOLE BEARS N00°41'29"W, 5973' FROM THE HEEL LOCATION.

WELL PAD - CAMENISCH 29C-35HZ

CAMENISCH 3C-35HZ
WELL LOCATION CERTIFICATE
424' FSL & 899' FWL SWSW (SURFACE)
150' FSL & 2354' FWL SESW (HEEL)
LOCATED IN SECTION 2
T1N, R67W, 6TH P.M.
750' FSL & 2402' FWL SESW (BOTTOM)
LOCATED IN SECTION 35
T2N, R67W, 6TH P.M.
WELD COUNTY, COLORADO

**Kerr-McGee Oil &
Gas Onshore L.P.**
1099 18th Street
Denver, Colorado 80202



CONSULTING, LLC

SHERIDAN OFFICE
1095 Saberton Avenue
Sheridan, Wyoming 82801
Phone 307-674-0609

LOVELAND OFFICE
1635 Foxtrail Drive, Suite 204
Loveland, Colorado 80538
Phone 970-776-4331

DRAFTED BY:	SJM	CHECKED BY:	JRS	SHEET NO:
DATE DRAFTED:	3/15/16	DATE SURVEYED:	11/19/15	2
REVISED:		FILE NAME:	15-50	2 OF 2