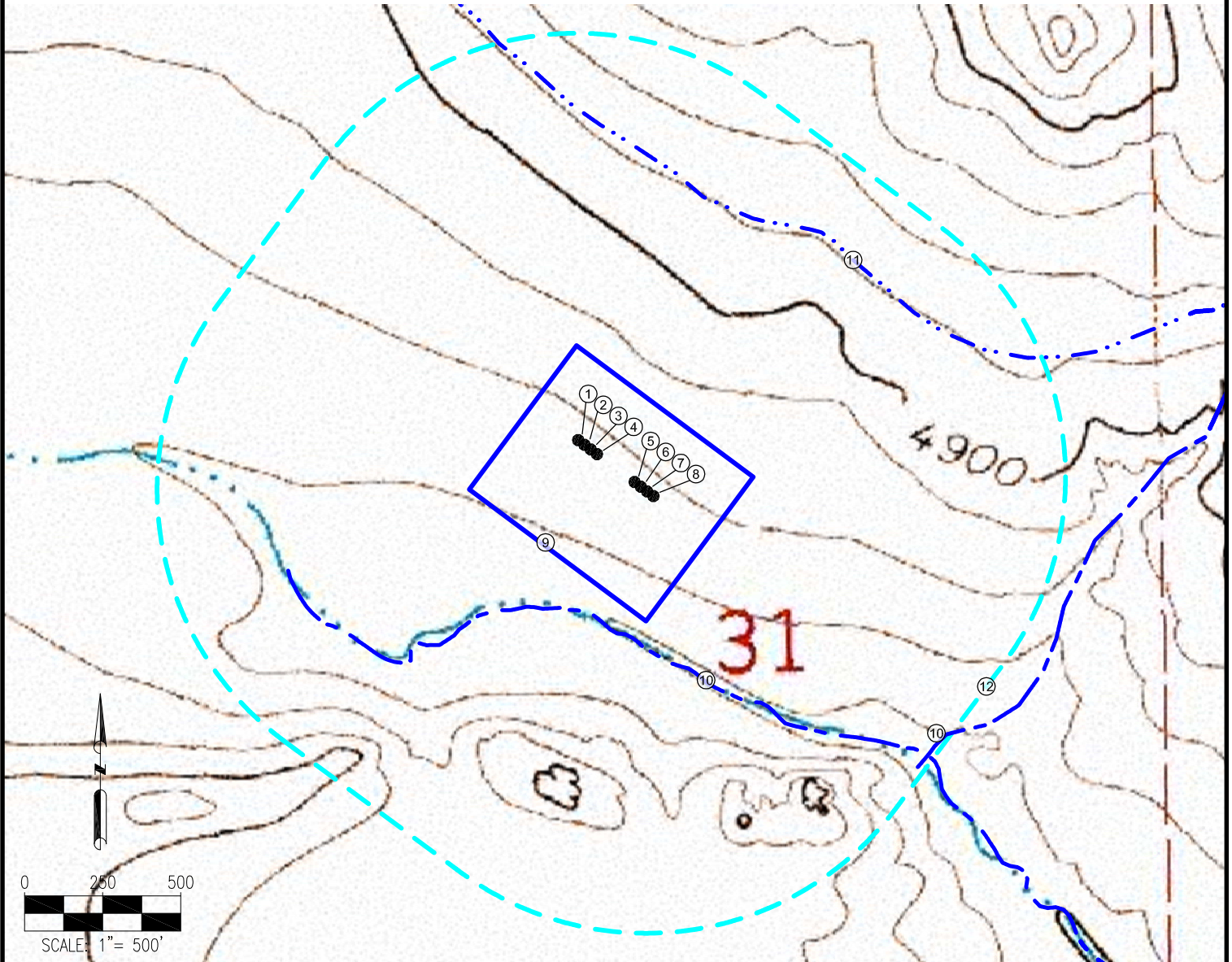


SHULL PAD 9-59-31-SENW HYDROLOGY MAP



MEASUREMENTS ARE MADE FROM THE NEAREST EDGE OF THE DISTURBANCE AREA.

- | | |
|------------------------------|--|
| 1. SHULL FED-9-59-31-2124CDE | 10. STREAMS ARE $\pm 70'$ S, $\pm 981'$ SE |
| 2. SHULL FED-9-59-31-2825AE | 11. DITCH (ABANDONED) IS $\pm 624'$ NE |
| 3. SHULL FED-9-59-31-2825BE | 12. 1000' RADIUS |
| 4. SHULL FED-9-59-31-2825CE | |
| 5. SHULL FED-9-59-31-4441BE | |
| 6. SHULL FED-9-59-31-3740CDE | |
| 7. SHULL FED-9-59-31-3740CE | |
| 8. SHULL FED-9-59-31-3740BE | |
| 9. DISTURBANCE AREA | |

LEGEND:

- | | | | |
|---|--------------------|-------|----------|
| ● | = PROPOSED WELL | --- | = STREAM |
| ▭ | = DISTURBANCE AREA | -.-.- | = DITCH |
| ○ | = 1000' RADIUS | | |

NOTES:

- THIS ILLUSTRATION DOES NOT REPRESENT A MONUMENTED LAND SURVEY AND THEREFORE CANNOT BE RELIED UPON TO DETERMINE OWNERSHIP.
- THIS ILLUSTRATION IS INTENDED FOR REFERENCE USE ONLY AND SHOULD NOT BE USED TO ESTABLISH, TRANSFER, OR DISPUTE BOUNDARIES.
- PARCEL LINES DEPICTED HEREON MAY NOT HAVE BEEN FIELD VERIFIED AND MAY BE BASED UPON PUBLICLY AVAILABLE DATA.

DATA SOURCE:

TOPO MAP: USGS
NHD: USGS

PUBLICLY AVAILABLE DATA
SOURCES HAVE NOT BEEN
INDEPENDENTLY VERIFIED BY PFS.

PREPARED BY:



FIELD DATE:

02-24-16

DRAWING DATE:

04-22-16

BY:

KAD

CHECKED BY:

MLP

SITE NAME:

SHULL PAD 9-59-31-SENW

SURFACE LOCATION:

SE 1/4 NW 1/4 SEC. 31, T9N, R59W, 6TH P.M.
WELD COUNTY, COLORADO

PREPARED FOR:

