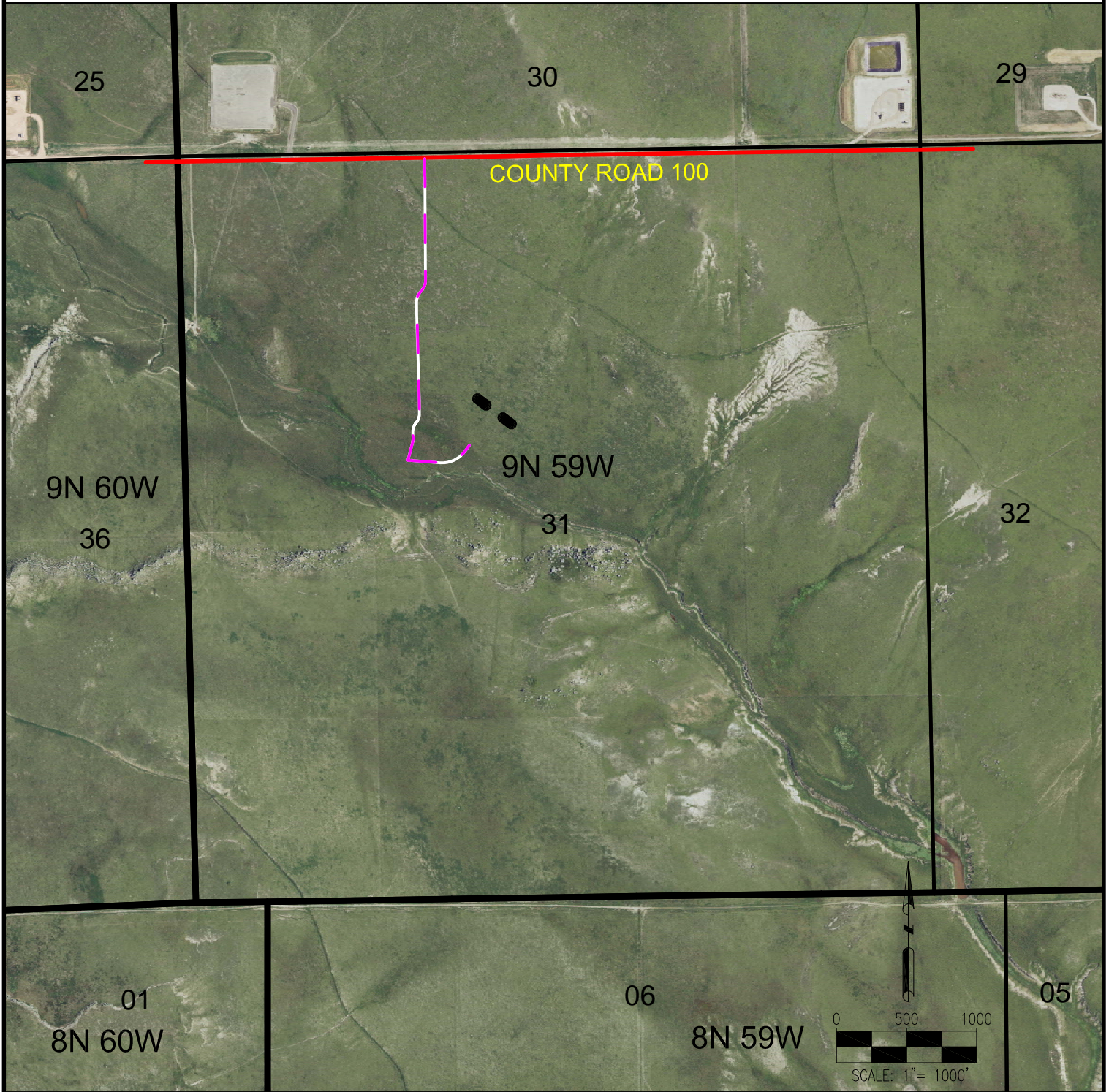


SHULL PAD 9-59-31-SENW ACCESS ROAD MAP



LEGEND:

- = PROPOSED WELL
- = EXISTING ROAD
- - - = PROPOSED ROAD

NOTES:

1. THIS ILLUSTRATION DOES NOT REPRESENT A MONUMENTED LAND SURVEY AND THEREFORE CANNOT BE RELIED UPON TO DETERMINE OWNERSHIP.
2. THIS ILLUSTRATION IS INTENDED FOR REFERENCE USE ONLY AND SHOULD NOT BE USED TO ESTABLISH, TRANSFER, OR DISPUTE BOUNDARIES.
3. PARCEL LINES DEPICTED HEREON MAY NOT HAVE BEEN FIELD VERIFIED AND MAY BE BASED UPON PUBLICLY AVAILABLE DATA.

DATA SOURCE:

AERIAL IMAGERY: NAIP 2015
PLSS: BLM

PUBLICLY AVAILABLE DATA
SOURCES HAVE NOT BEEN
INDEPENDENTLY VERIFIED BY PFS.

PREPARED BY:



FIELD DATE:

02-24-16

DRAWING DATE:

04-22-16

BY:

KAD

CHECKED BY:

MLP

SITE NAME:

SHULL PAD 9-59-31-SENW

SURFACE LOCATION:

SE 1/4 NW 1/4 SEC. 31, T9N, R59W, 6TH P.M.
WELD COUNTY, COLORADO

PREPARED FOR:

