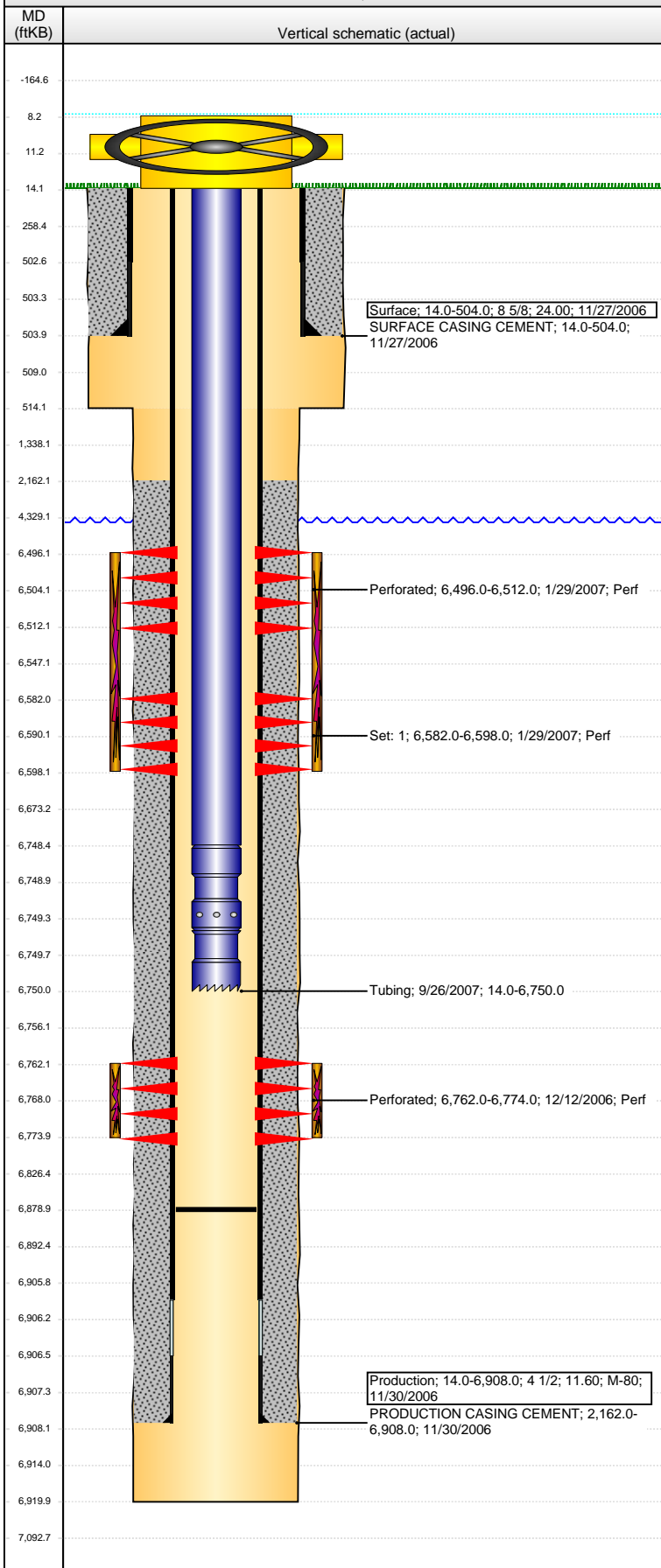


**Well Name: LOLOFF B26-25**

VERTICAL - ORIGINAL HOLE, 5/26/2016 9:10:48 AM



Well Header			
API	Business Unit	District	Well Config
05-123-24368	DJ BASIN	15	VERTICAL
Original KB Elevation (ft)	KB - GL / MSL (ftKB)	Spud Date	P & A Date
4,656	14.00	11/26/2006	
Comment			
DISCREPANCY: DR RPT TD DATE 11/29/2006; ST RPT TD DATE 11/30/2006			
Directions To Well			
Congressional Location			
Quarter 1	Quarter 2	Quarter 3	Quarter 4
		SW	SW
Section	Township	Twnshp N...	Range
26	5 N		64 W
Bottom Hole Location			
North-South Distance (ft)	From N or S Line	East-West Distance (ft)	From E or W Line
Plug Back Total Depths			
Date	Depth (ftKB)	Method	Com
11/30/2006	6,893.0	CASING TALLY	FLOAT COLLAR ON CASING TALLY
12/11/2006	6,879.0	CASED HOLE LOG	DEPTH LOGGER ON CBL
9/26/2007	6,879.0	TAG	TAG TO LAND TUBING
Wellbore Sections			
Section Des	Size (in)	Act Top, MD (ftKB)	Act Btm, MD (ftKB)
SURFACE	12 1/4	14	514
PRODUCTION	7 7/8	514	6,920
Zone Statuses			
Zone Name	Status Date	Status	Fluid Type
NIOBRARA	3/1/2007	PR	
CODELL	3/1/2007	PR	
Casing Strings			
Surface, 504.0ftKB			
Casing Description	Run Date	OD (in)	Wt/Len (l...)
Surface	11/27/2006	8 5/8	24.00
Grade	Top, MD (ft...)	MD (ftKB)	
M-80	14.0	504.0	
Production, 6,908.0ftKB			
Casing Description	Run Date	OD (in)	Wt/Len (l...)
Production	11/30/2006	4 1/2	11.60
Grade	Top, MD (ft...)	MD (ftKB)	
M-80	14.0	6,908.0	
Cement			
Description	Top Depth (ftKB)	Bottom Depth (ftKB)	
SURFACE CASING CEMENT	14.0	504.0	
Description	Top Depth (ftKB)	Bottom Depth (ftKB)	
PRODUCTION CASING CEMENT	2,162.0	6,908.0	
Tubing Strings			
Tubing Description	Run Date	String...	ID (in)
Tubing	9/26/2007	2 3/8	1.995
Wt (lb/ft)	Grade	Len (ft)	Set De...
4.70	J-55	6,736.00	
Tubing Components			
Item Des	OD (in)	Wt (lb/ft)	Grade
EUE 8rd Tubing	2 3/8	4.70	J-55
Seal Nipple	2 3/8		
Notched collar	2 3/8		
Jts	Len (ft)	Btm (ftKB)	Btm (TVD) (ftKB)
219	6,734.35	6,748.4	
1	1.10	6,749.5	
1	0.55	6,750.0	
Perforation Data			
Zone	Bnch/St g	Entered Shot Total	Top (ftKB)
NIOBRARA, ORIGINAL HOLE		96	6,496.00
NIOBRARA, ORIGINAL HOLE		96	6,582.00
CODELL, ORIGINAL HOLE		48	6,762.00
Btm (ftKB)	Date		
6,512.00	1/29/2007		
6,598.00	1/29/2007		
6,774.00	12/12/2006		
Stimulations & Treatments			
Date	Zone	Primary Job Type	
1/29/2007	CODELL, ORIGINAL HOLE	DRILLING/COMPLETION - ORIGINAL	
Technical Result	Tech Result Details	Tech Result Note	
Comment			
Date	Zone	Primary Job Type	
1/29/2007	NIOBRARA, ORIGINAL HOLE	DRILLING/COMPLETION - ORIGINAL	
Technical Result	Tech Result Details	Tech Result Note	
Comment			

**Well Name: LOLOFF B26-25**

VERTICAL - ORIGINAL HOLE, 5/26/2016 9:10:50 AM

## Other In Hole

Run Date	Des	OD (in)	Top (ftKB)	Btm (ftKB)

## Logs

Date	Type	Top, MD (ftKB)	Btm, MD (ftKB)
11/30/2006	COMPENSATED DENSITY	2,490.0	6,903.0
11/30/2006	INDUCTION	504.0	6,923.0
12/11/2006	CBL/CCL/GR	10.0	6,877.0
11/12/2014	GYRO	10.0	6,650.0

