

Click here to reset the form

FORM
21
Rev 9/14

State of Colorado
Oil and Gas Conservation Commission



1120 Lincoln Street, Suite 801, Denver, Colorado 80203 (303)-894-2100 Fax: (303)-894-2109

MECHANICAL INTEGRITY TEST

1. Duration of the pressure test must be a minimum of 15 minutes.
2. An original pressure chart must accompany this report if this test was not witnessed by a OGCC representative. Injection wells tests must be witnessed by an OGCC representative.
3. For production wells, test pressures must be at a minimum of 300 psig.
4. New injection wells must be tested to maximum requested injection pressure.
5. For injection wells, test pressures must be at least 300 psig or average injection pressure, whichever is greater.
6. A minimum 300 psi differential pressure must be maintained between the tubing and tubing/casing annulus pressure.
7. Do not use this form if submitting under provisions of Rule 326.a.(1) B. or C.
8. OGCC notification must be provided 10 days prior to the test via Form 42.
9. Packers or bridge plugs, etc., must be set within 100 feet of the perforated interval to be considered a valid test.

OGCC Operator Number: 16700
Name of Operator: Chevron U.S.A. Inc
Address: 100 Chevron Road
City: Rangely State: CO Zip: 81648
API Number: 05-103-08745 OGCC Facility ID Number: 47443 / Rangely Field 72370
Well/Facility Name: FEE Well/Facility Number: 136X
Location QtrQtr: SWNE Section: 20 Township: 2N Range: 102W Meridian: 6th

Contact Name and Telephone

Diane L Peterson

No: (970) 675-3842

Email: dlpe@chevron.com

FOR OGCC USE ONLY

Document Number:

Date Received:

Complete the
Attachment Checklist

	Oper	OGCC
Pressure Chart	✓	
Cement Bond Log		
Tracer Survey		
Temperature Survey		
Inspection Number	✓	

☐ SHUT-IN PRODUCTION WELL

☒ INJECTION WELL

Last MIT Date: 08/27/2012

Test Type:

☐ Test to Maintain SI/TA status

☒ 5- year UIC

☐ Reset Packer

☐ Verification of Repairs

☐ Annual UIC Test

Describe Repairs or Other Well Activities:

Casing Test

Use when perforations or open hole is isolated by bridge plug or cement plug; use if cased-hole only with plug back total depth.

Bridge Plug or Cement Plug Depth

Wellbore Data at Time of Test

Injection/Producing Zone(s)

Perforated Interval:

Open Hole Interval:

Weber

5963-6441'

Tubing Casing/Annulus Test

Tubing Size:

2 7/8'

Tubing Depth:

6152.8

Top Packer Depth:

5833.9

Multiple Packers?

☒ Yes ☐ No

Test Data

Test Date

5/25/16

Well Status During Test

INJECTING

Casing Pressure Before Test

0

Initial Tubing Pressure

1025

Final Tubing Pressure

Casing Pressure Start Test

1200

Casing Pressure - 5 Min.

1200

Casing Pressure - 10 Min.

1200

Casing Pressure Final Test

1200

Pressure Loss or Gain During Test

0

Test Witnessed by State Representative?

☒ Yes

☐ No

OGCC Field Representative (Print Name):

Chuck Browning

I hereby certify that the statements made in this form are, to the best of my knowledge, true, correct, and complete.

Print Name: Diane L Peterson

Form 42# 401042635

Field Inspection #

168400595

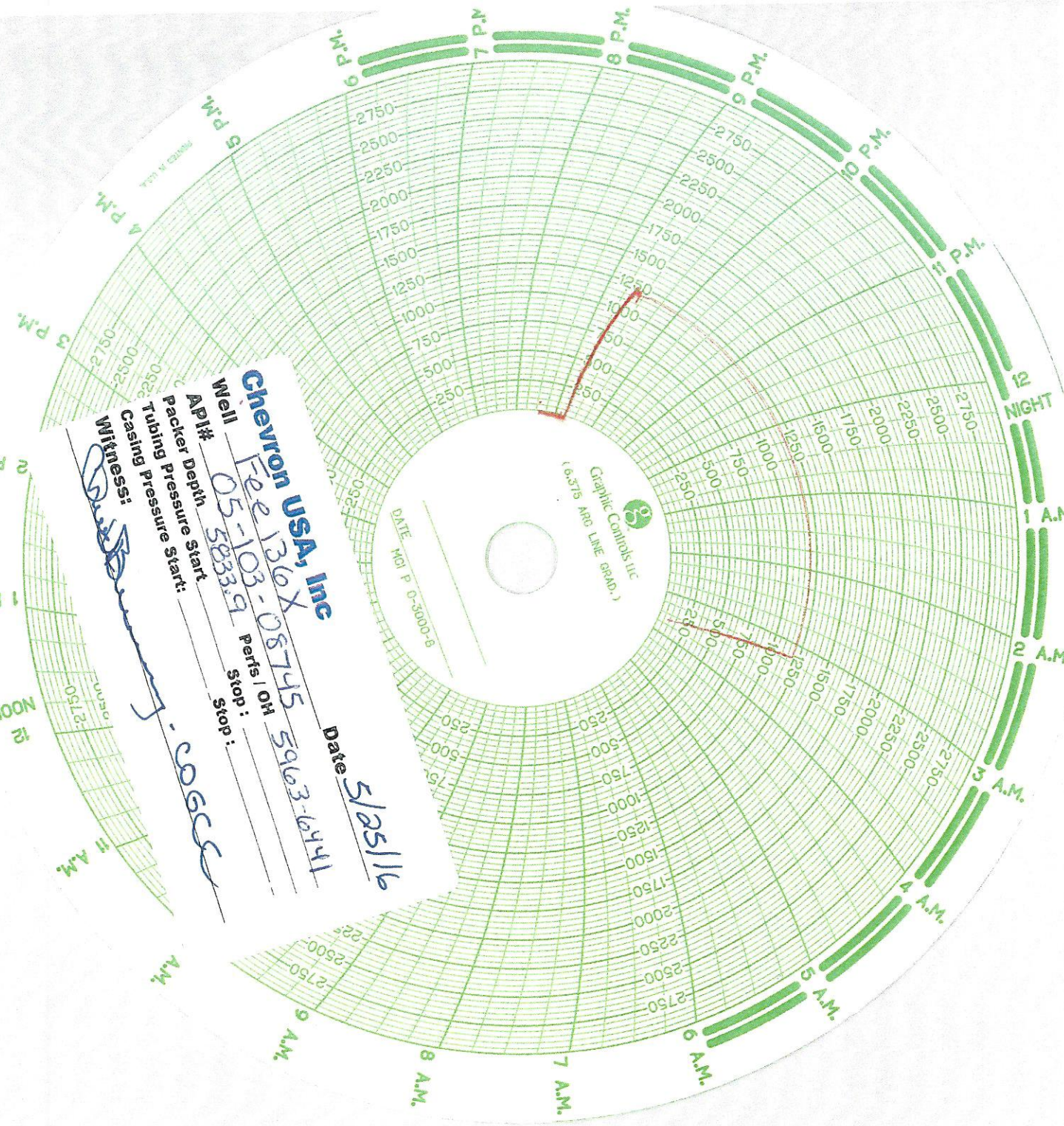
Signed: Diane L Peterson Title: Permitting Specialist

Date: 5/25/16

OGCC Approval: Chuck Browning Title: NW Insp

Date: 5/25/16

Conditions of Approval, if any:



Chevron USA, Inc
Well Fee 136X Date 5/25/16
API# 05-103-08745 Perfs / OH 5963-641
Stop :
Stop :
Packer Depth Start: 20650
Tubing Pressure Start:
Casing Pressure Start:
Witness: [Signature]

DATE
MO P 0-3600-8