



VDL **Gamma Ray**

API NO.

WELL FORD #13-1

FIELD _____ WILDCAT _____

COUNTY WELD STATE COLORADO

LOCATION: SE 1 SW 1

Other Services

Other Services
NONE

SEC 13 TWP 5N RGE 64W

G.L.	4565
Elev.	

Elev. 4575
KB

Permanent Datum G.L. Elev. 4565
Log Measured from K.B. 10 Ft. Above Permanent Datum
Drilling Measured from K.B.

DF	
GL	<u>4565</u>

Date	3-21-85	CSG. RECORD	Surface	Protection	Production	Liner
Run No.	ONE	Size	8 5/8		4.5	
Service Order No.	68868	Wt./Ft.	24#		11.60	
Depth — Driller	6803	Grade			N-80	
Depth — Logger	6690	Type Joint				
Bottom Logged Int.	6687	Top	000		0000	
Top Logged Interval	5750	Bottom	311		6810	
Fl. Measured	937	PRIMARY CEMENTING DATA				
Type Fluid in Csg.	KCL	Type Cement				
Fluid Level	FULL	Vol. of Cement				
Max. Temp. Deg. F.	—	Additive				
Tool Series No.	1408M5	% Additive				
Tool Diam.	3.62	Retarder				
Standoff Size	VAR.	% Retarder				
Logging Speed	30	Slurry Wt.				
R/A Log Type	GR	Water Loss				
T.C.	—	Drig. Mud Type				
Sens. Setting	—	Drig. Mud Wt.				
API Units/Div.	—	PRIMARY CEMENTING PROCEDURE				
Truck or Unit No.	6290	Started Pumping	HR.	DATE	Preceding Fluid	
Location	FM	Plug on Bottom			Vol.	Bbls.
Op'r. Flg Time	MAST	Pres. Released			Returns:	Full Partial None
Recorded by	GRIMES	Started Bond Log	0930	3-21	Pipe Rot. During Pumping:	Yes No
Witnessed by	MR. FRANK	Finished Bond Log	1030	3-21	Pipe Rot. After Plugdown:	Yes No

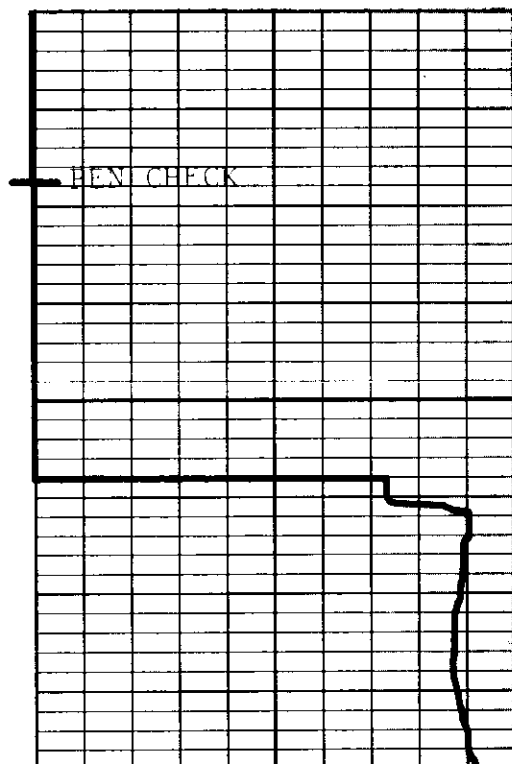
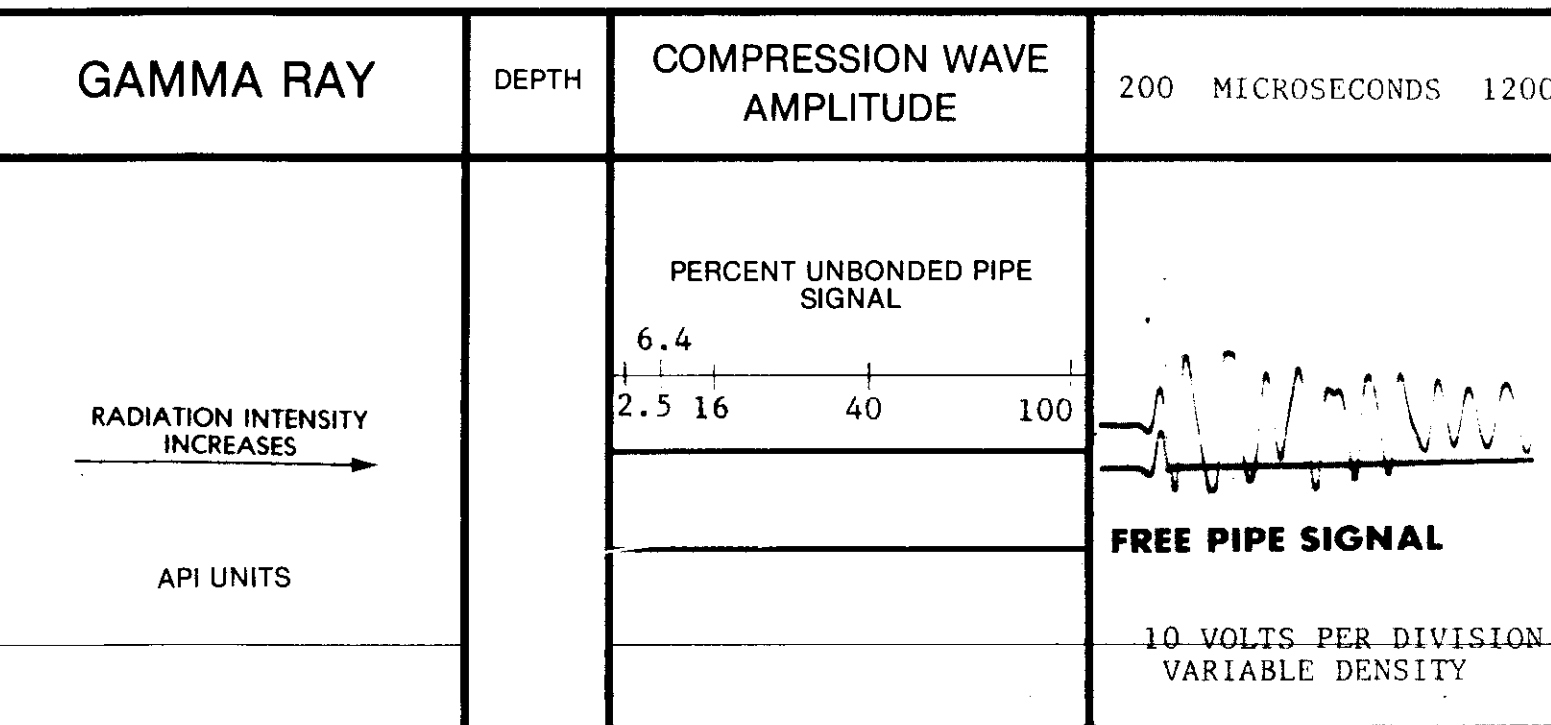
In making interpretations of log our employees will give Customer the benefit of their best judgement, but since all interpretations are opinions based on inferences from electrical or other measurements, we cannot, and we do not guarantee the accuracy or the correctness of any interpretation. We shall not be liable or responsible for any loss, cost, damages, or expenses whatsoever incurred or sustained by the Customer resulting from any interpretation made by any of our employees.

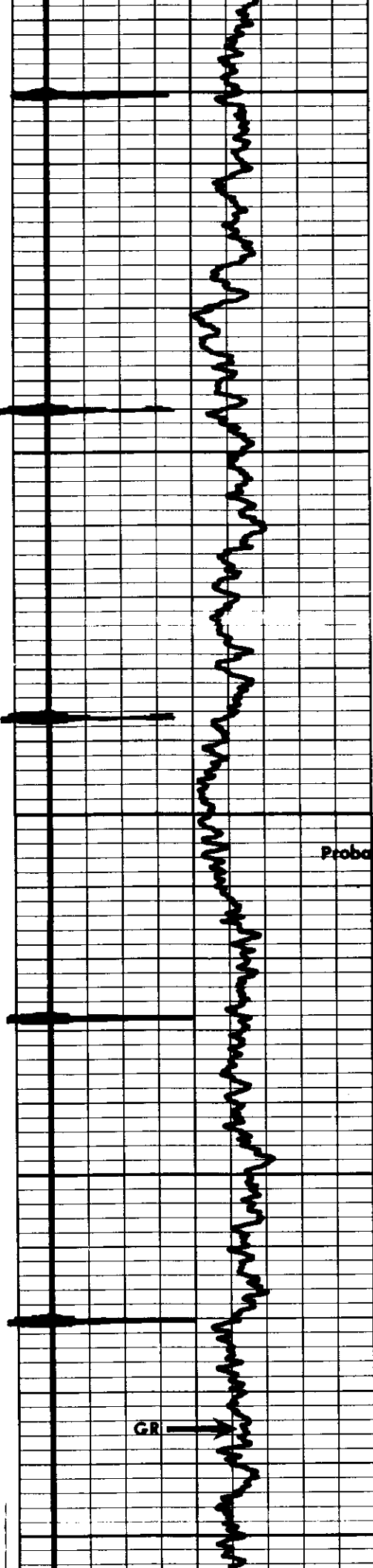
EQUIPMENT DATA

[illegible]

Serial No.								
Panel No.	3452	3452						
Serial No.	14428	14428						
Standoff Size	VAR							
T-R Spacing	5'							

LOGGING DATA

[illegible]

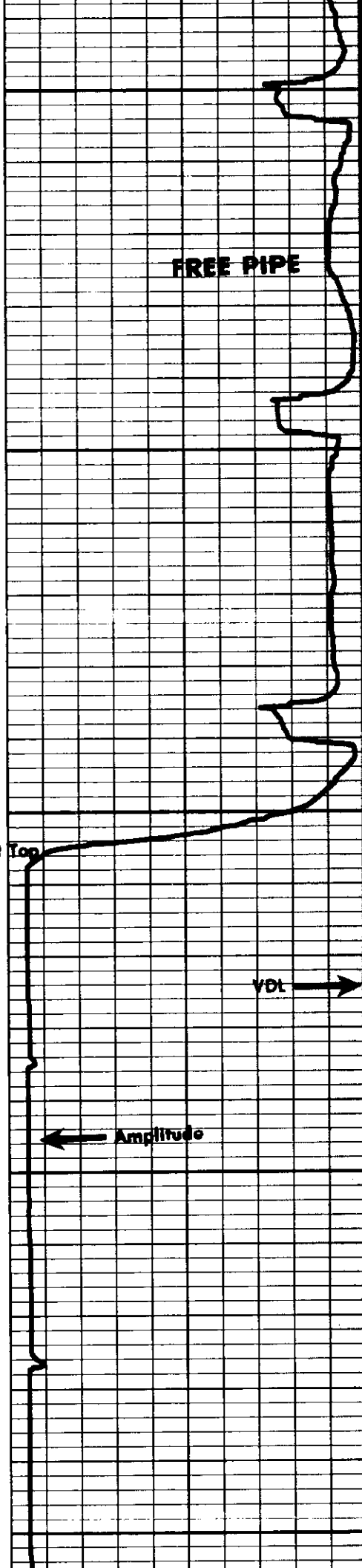


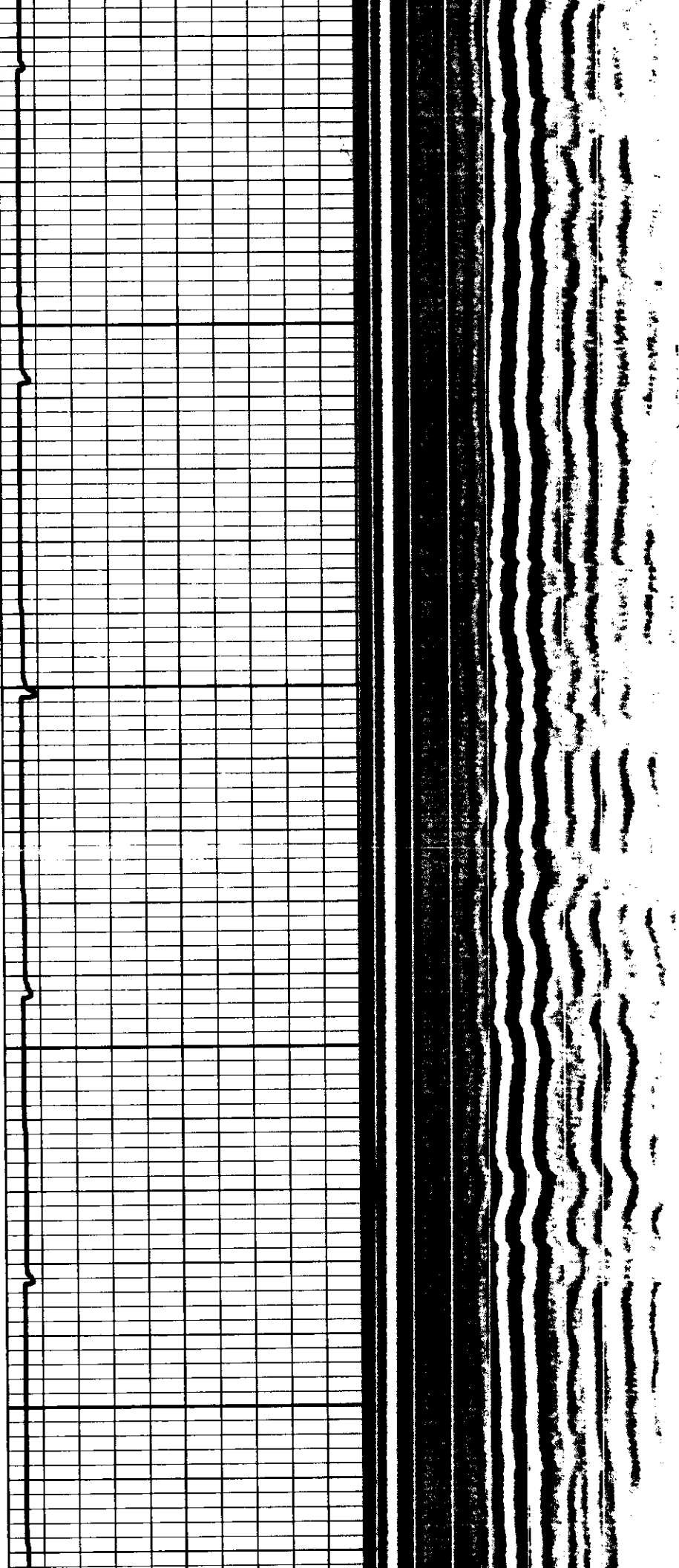
5800

5900

6000

Probable Cement Top

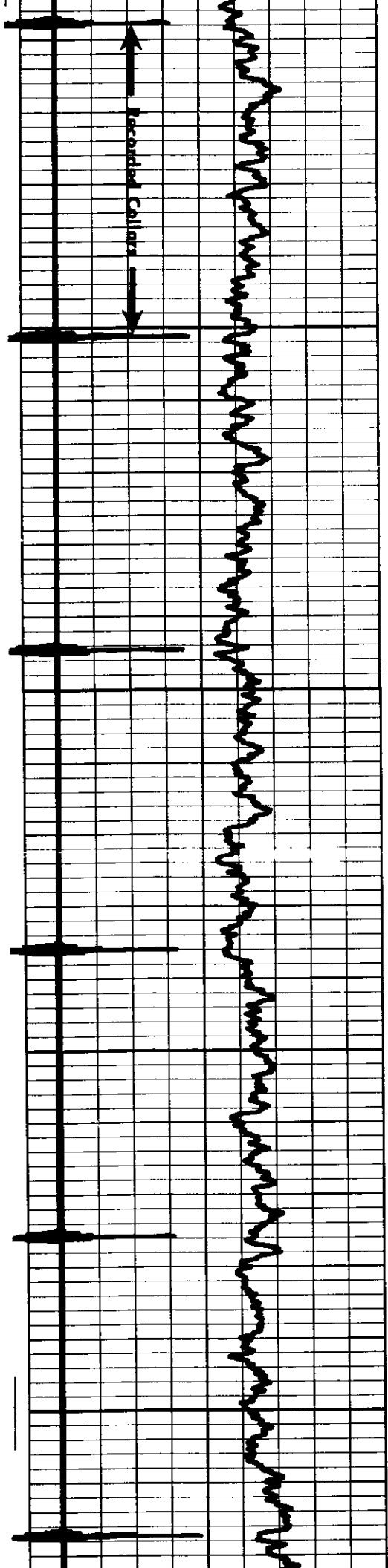


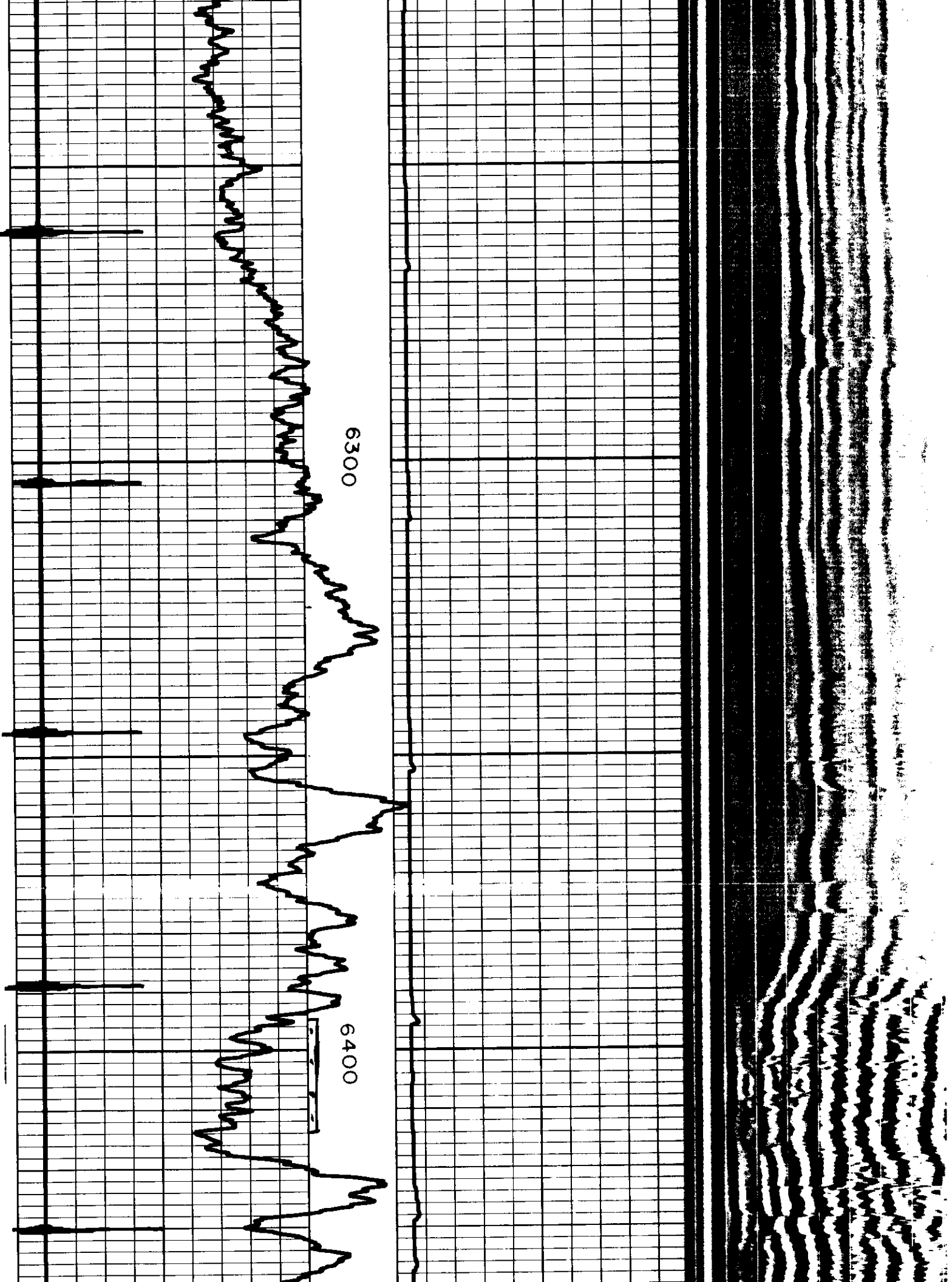


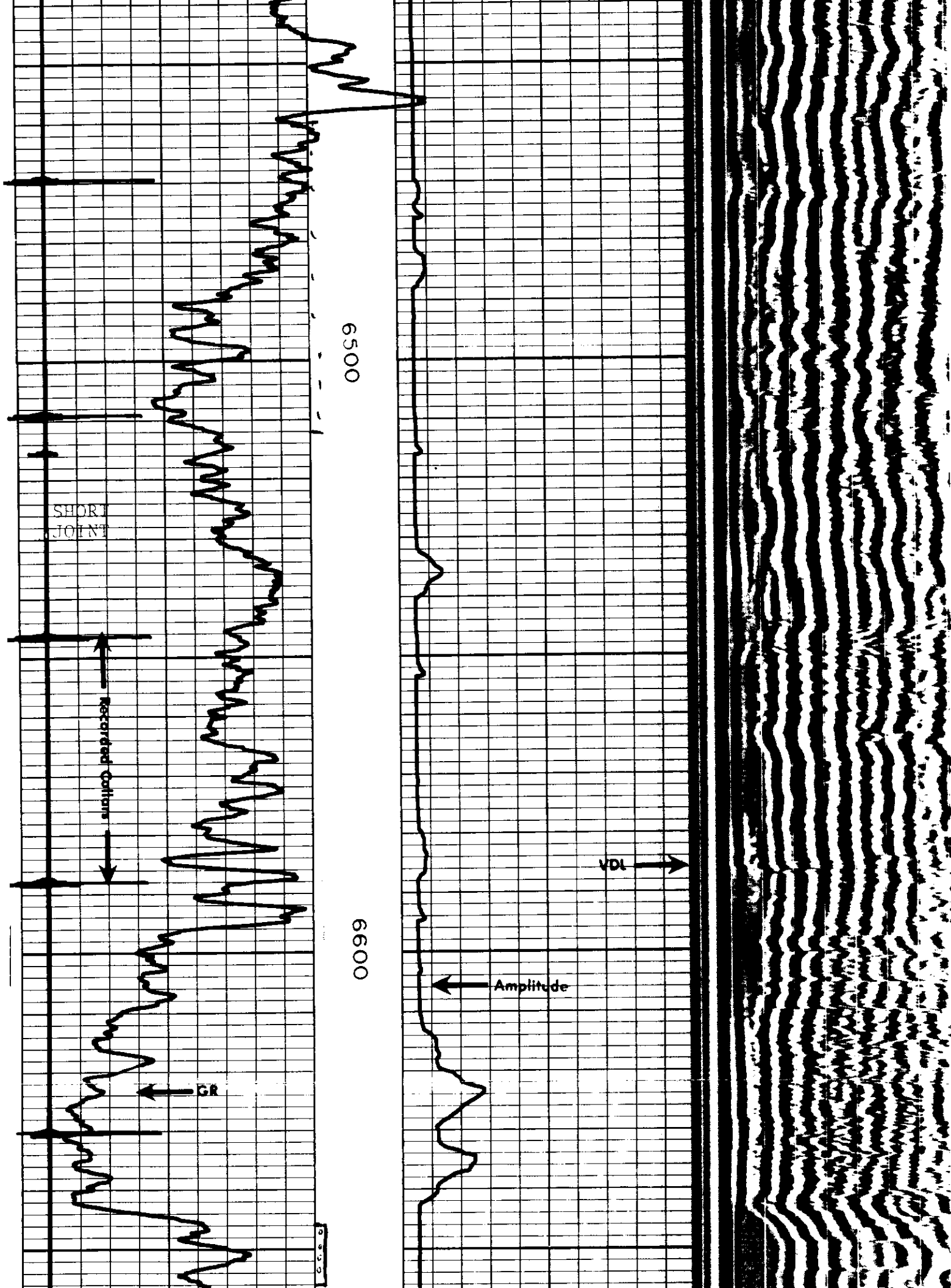
00

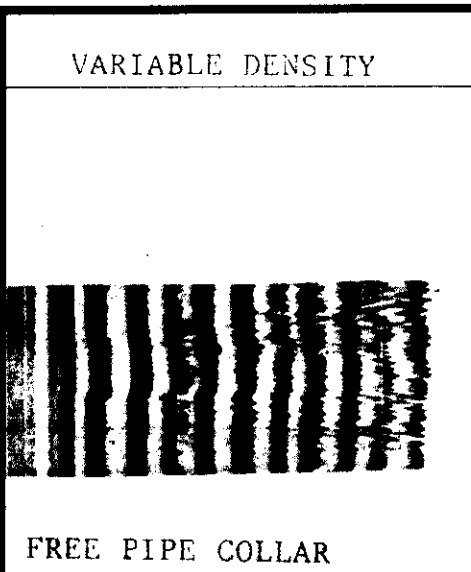
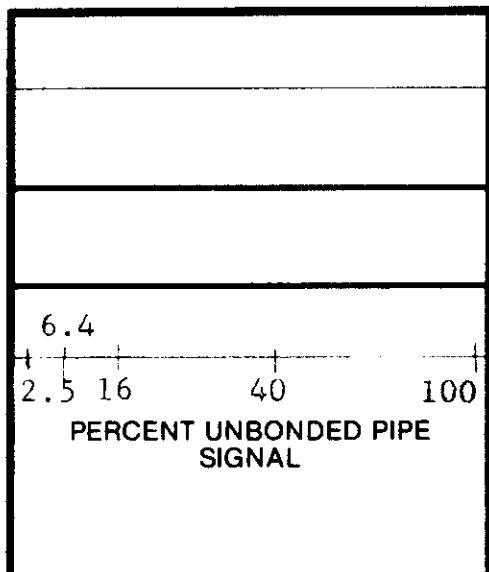
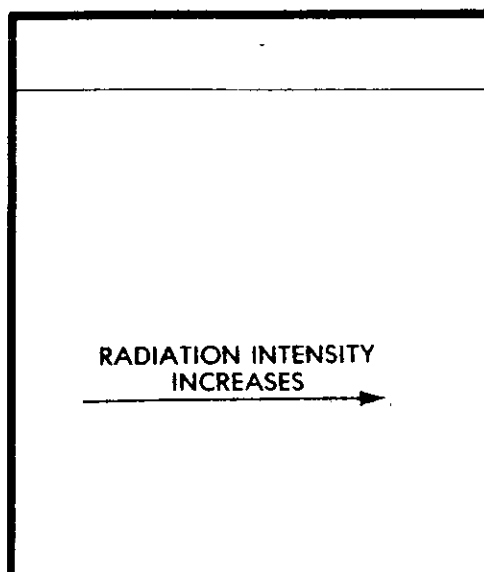
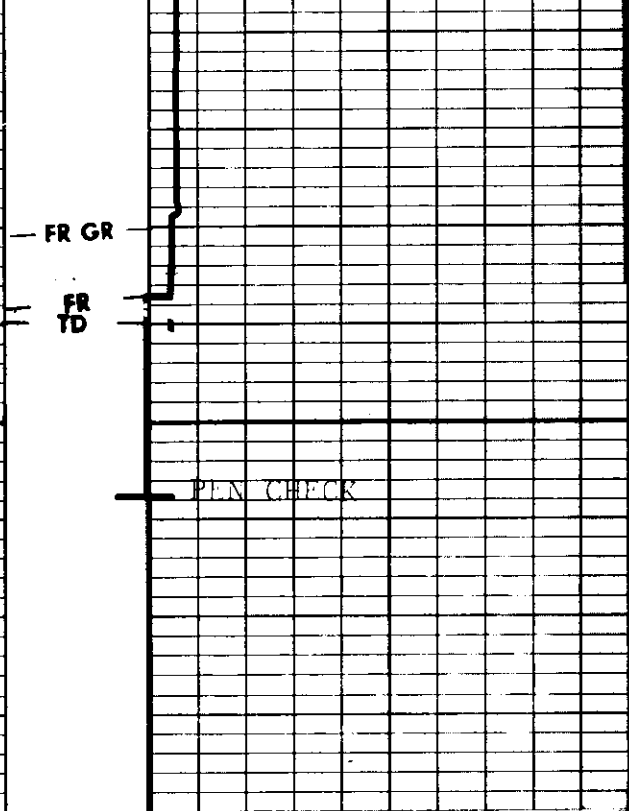
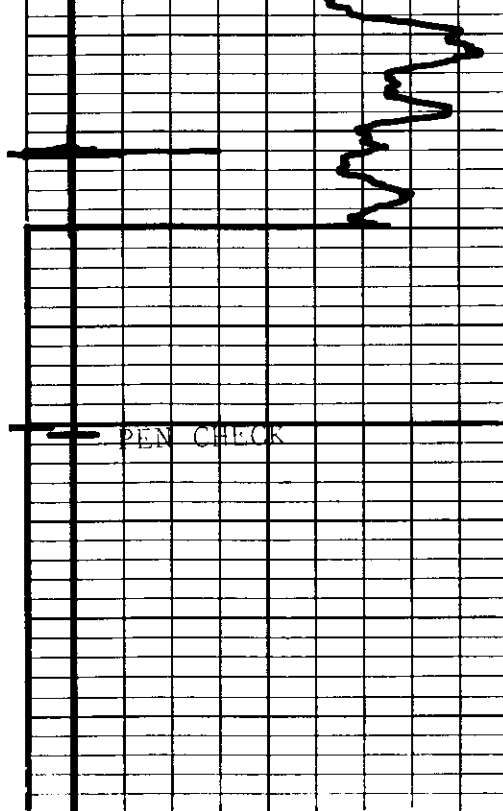
6100

6200







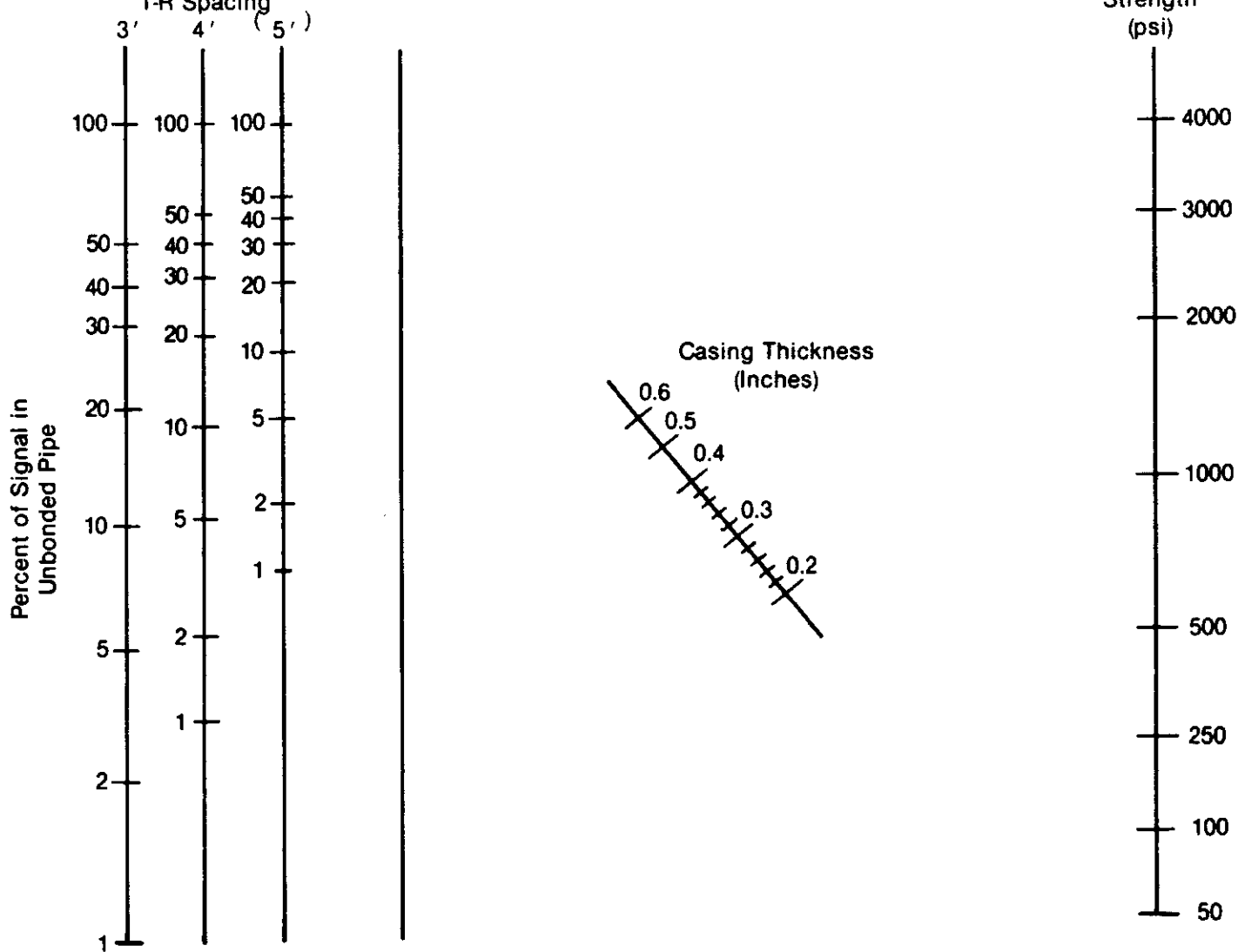


GAMMA RAY	DEPTH	COMPRESSION WAVE AMPLITUDE	
-----------	-------	----------------------------	--

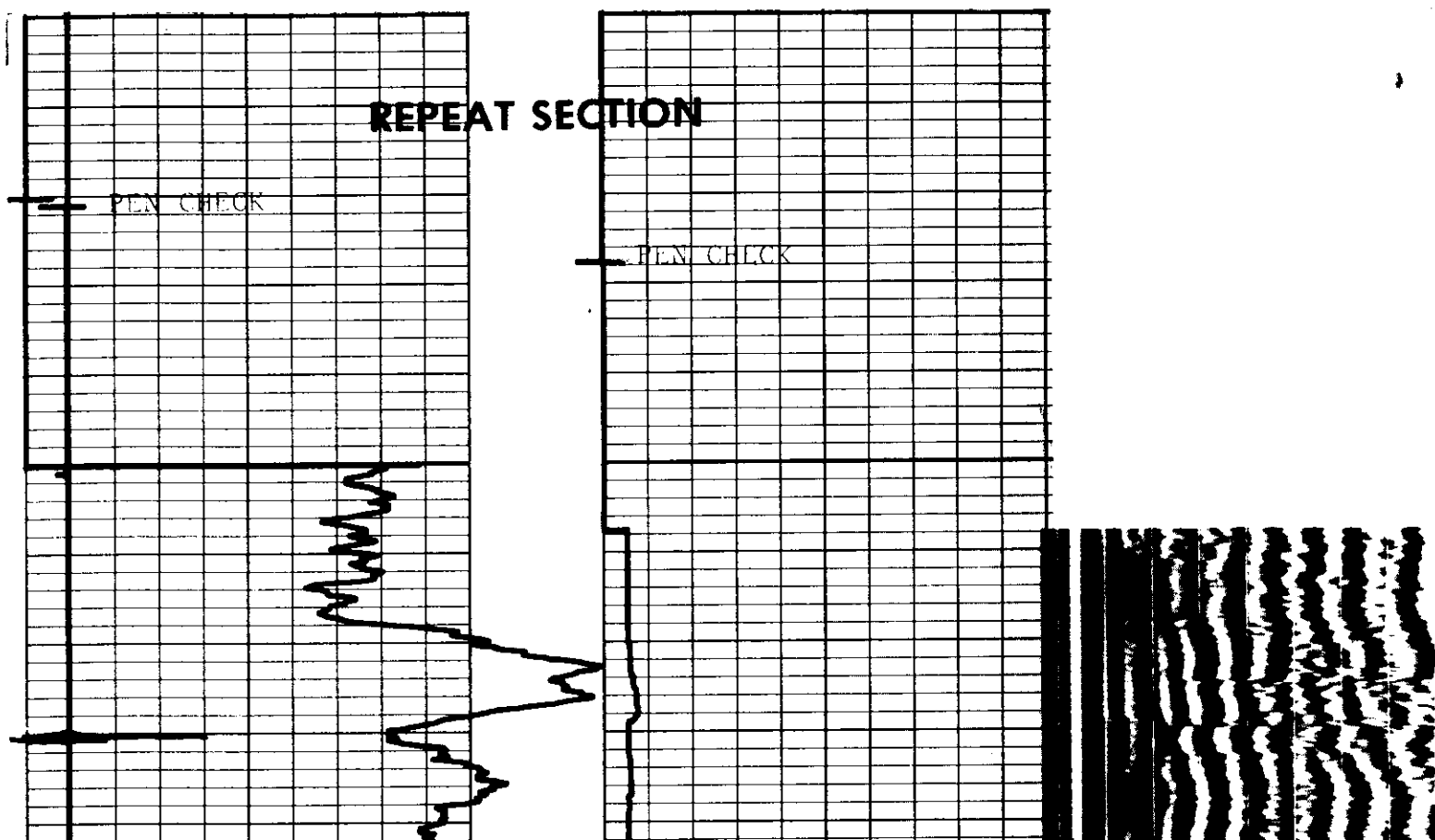
Company	<u>MIZEL EXPLORATION CO.</u>	Drillers T.D.	<u>6803</u>
Well	<u>FORD NO. 13-1</u>	Log F.R.	<u>6687</u>
Field	<u>WILDCAT</u>	Log T.D.	<u>6690</u>
County	<u>WELD</u>	Elevations	
State	<u>COLORADO</u>	K.B.	<u>4575</u>
		DF.	<u>4565</u>
		G.L.	<u>4565</u>

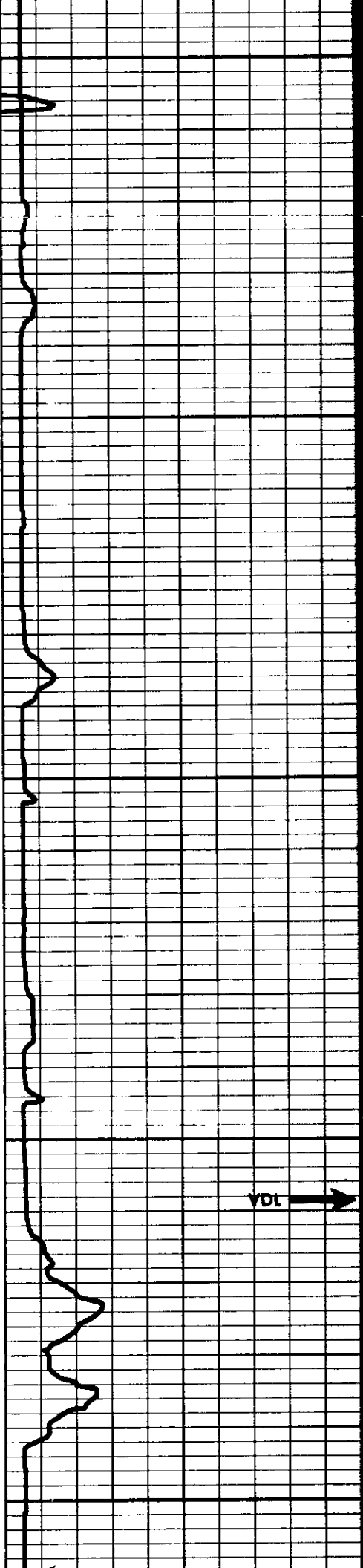
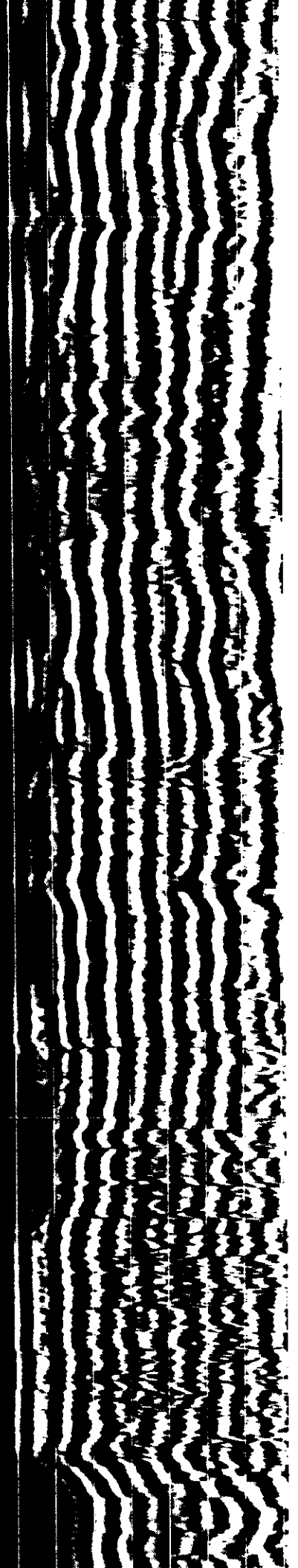
CEMENT STRENGTH

Compressive
Strength



(Note: Use for centered tool only and in absence of a microannulus.)

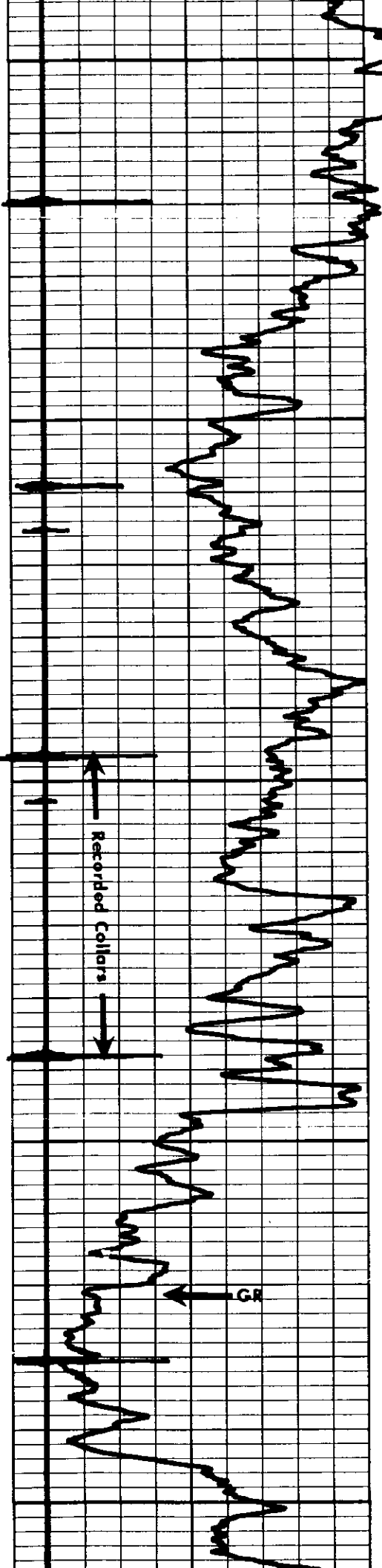




6500

6600

VDL



Amplitude

PEN CHECK

PEN CHECK

CALIBRATION

0

2.5

6.4

16

40

100

FREE PIPE SIGNAL

