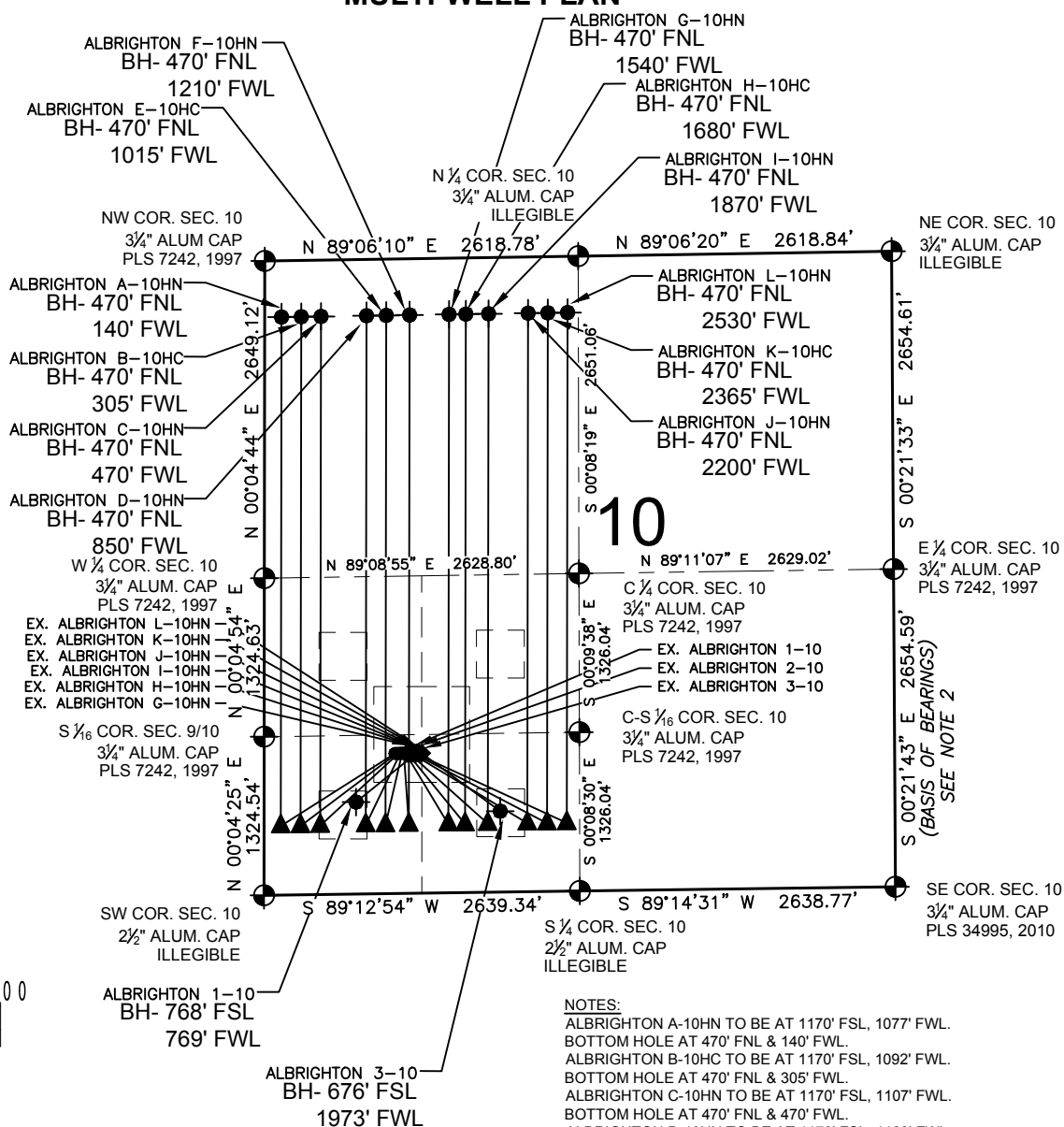


ALBRIGHTON 10-P PAD MULTI-WELL PLAN



NOTES:

ALBRIGHTON A-10HN TO BE AT 1170' FSL, 1077' FWL.
BOTTOM HOLE AT 470' FNL & 140' FWL.
ALBRIGHTON B-10HC TO BE AT 1170' FSL, 1092' FWL.
BOTTOM HOLE AT 470' FNL & 305' FWL.
ALBRIGHTON C-10HN TO BE AT 1170' FSL, 1107' FWL.
BOTTOM HOLE AT 470' FNL & 470' FWL.
ALBRIGHTON D-10HN TO BE AT 1170' FSL, 1122' FWL.
BOTTOM HOLE AT 470' FNL & 850' FWL.
ALBRIGHTON E-10HC TO BE AT 1170' FSL, 1137' FWL.
BOTTOM HOLE AT 470' FNL & 1015' FWL.
ALBRIGHTON F-10HN TO BE AT 1170' FSL, 1152' FWL.
BOTTOM HOLE AT 470' FNL & 1210' FWL.

EX. ALBRIGHTON G-10HN IS AT 1171' FSL, 1167' FWL.
BOTTOM HOLE AT 470' FNL & 1540' FWL.
EX. ALBRIGHTON H-10HC IS AT 1171' FSL, 1183' FWL.
BOTTOM HOLE AT 470' FNL & 1680' FWL.
EX. ALBRIGHTON I-10HN IS AT 1171' FSL, 1198' FWL.
BOTTOM HOLE AT 470' FNL & 1870' FWL.
EX. ALBRIGHTON J-10HN IS AT 1171' FSL, 1212' FWL.
BOTTOM HOLE AT 470' FNL & 2200' FWL.
EX. ALBRIGHTON K-10HC IS AT 1171' FSL, 1227' FWL.
BOTTOM HOLE AT 470' FNL & 2365' FWL.
EX. ALBRIGHTON L-10HN IS AT 1170' FSL, 1243' FWL.
BOTTOM HOLE AT 470' FNL & 2530' FWL.
EX. ALBRIGHTON 1-10 IS AT 1170' FSL, 1272' FWL.
BOTTOM HOLE AT 768' FSL & 769' FWL.
EX. ALBRIGHTON 2-10 IS AT 1170' FSL, 1294' FWL.
EX. ALBRIGHTON 3-10 IS AT 1169' FSL, 1316' FWL.
BOTTOM HOLE AT 676' FSL & 1973' FWL.

LEGEND

- = EXISTING MONUMENT
- = CALCULATED POSITION
- = PROPOSED WELL
- ▲ = LANDING POINT
- ◆ = BOTTOM HOLE
- ◆ = EXISTING WELL
- LP = LANDING POINT
- BH = BOTTOM HOLE

NOTES:

- THIS FIELD SURVEY CONFORMS TO THE MINIMUM STANDARDS SET BY THE C.O.G.C.C., RULE NO. 215
- BEARINGS ARE BASED UPON THE ASSUMPTION THAT THE EAST LINE OF THE SOUTHEAST QUARTER OF SECTION 10, BEARS S00°21'43"E BETWEEN THE MONUMENTS SHOWN HEREON.
- GRID DISTANCES ARE SHOWN, AS GPS MEASURED IN THE FIELD, WITH TIES TO WELLS MEASURED PERPENDICULAR TO SECTION LINES. TO GET GROUND DISTANCES MULTIPLY THE SHOWN DISTANCE BY 1.000257538.
- MONUMENT VERIFICATION COMPLETED WITHIN 1 YEAR OF SIGNATURE DATE.

PREPARED BY:



FIELD DATE:

03-22-16

DRAWING DATE:

05-13-16

BY:

TJN

CHECKED BY:

KLA

SITE NAME:

ALBRIGHTON 10-P PAD

SURFACE LOCATION:

SW 1/4 SW 1/4 SEC. 10, T6N, R64W, 6TH P.M.
WELD COUNTY, COLORADO

PREPARED FOR:

