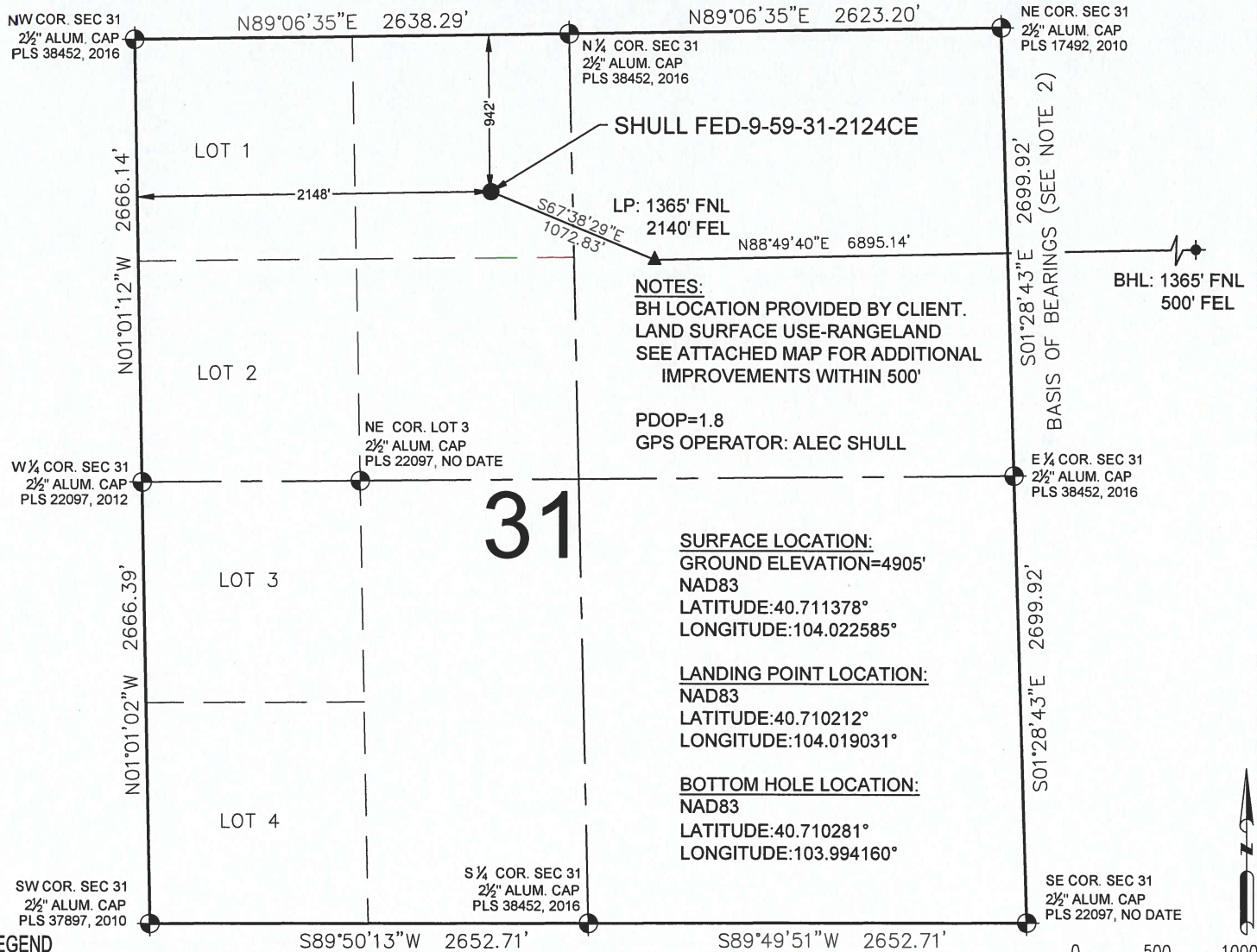




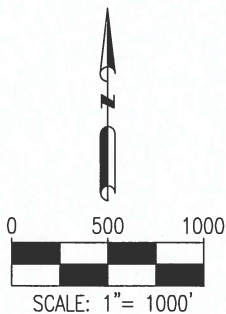
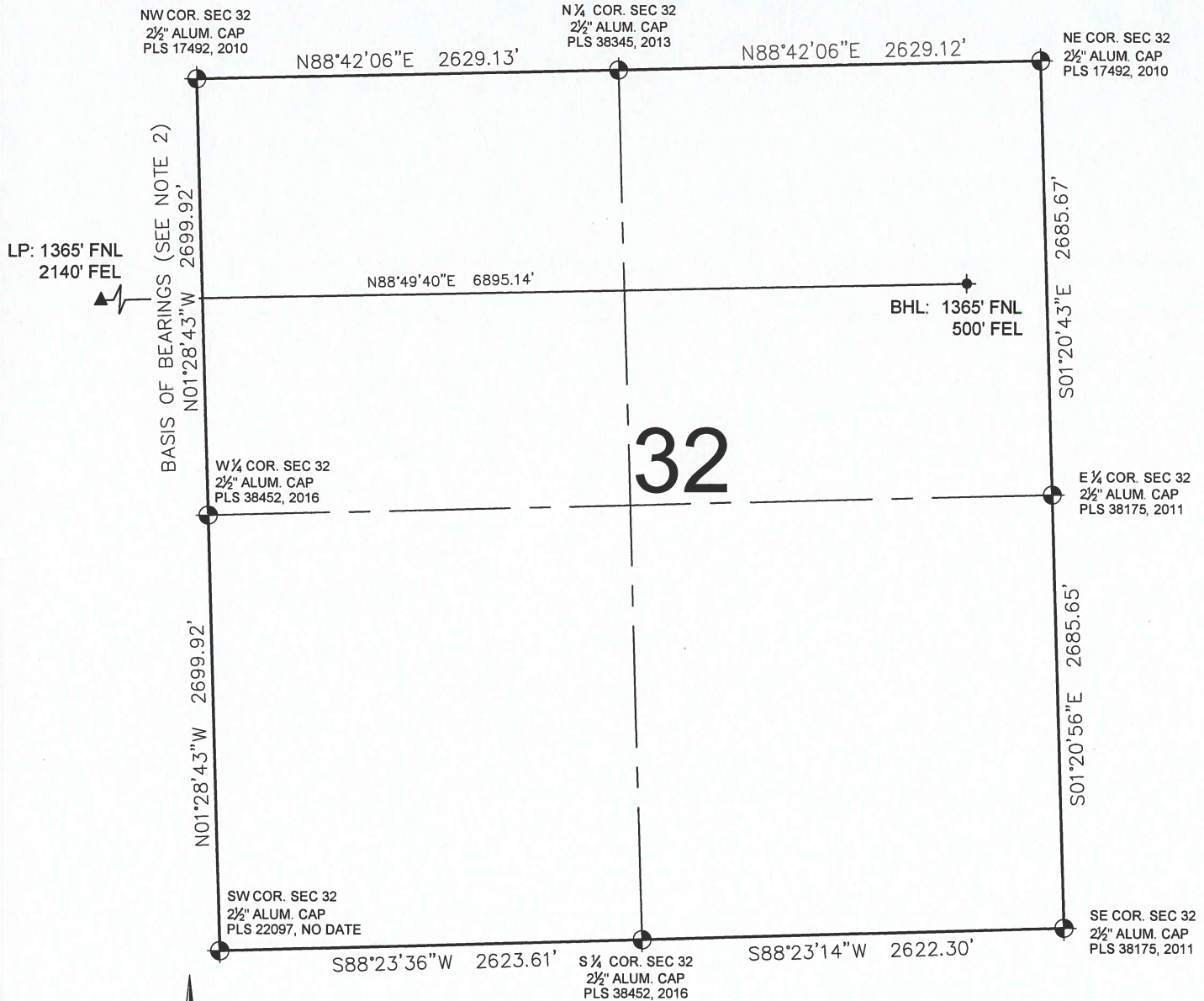
SHULL FED-9-59-31-2124CE WELL LOCATION CERTIFICATE



SHEET 1 OF 2

PREPARED BY:  PFS Petroleum Field Services, LLC 7535 Hilltop Circle Denver, CO 80221	FIELD DATE: 02-24-16 DRAWING DATE: 04-19-16 BY: TJN CHECKED BY: KAD	WELL NAME: SHULL FED-9-59-31-2124CE SURFACE LOCATION: NE1/4 NW1/4 SEC. 31, T9N, R59W, 6TH P.M. WELD COUNTY, COLORADO	PREPARED FOR:  Crescent Point ENERGY CORP
---	--	--	---

SHULL FED-9-59-31-2124CE WELL LOCATION CERTIFICATE



LEGEND

- = EXISTING MONUMENT
- = CALCULATED POSITION
- = PROPOSED WELL
- ◆ = EXISTING WELL
- ◆ = BOTTOM HOLE
- ▲ = LANDING POINT
- LP = LANDING POINT
- BHL = BOTTOM HOLE LOCATION

BRIAN C. RITZ, PLS 38452
COLORADO LICENSED PROFESSIONAL LAND SURVEYOR
FOR AND ON BEHALF OF P.F.S., LLC



SHEET 2 OF 2

PREPARED BY:



FIELD DATE:

02-24-16

DRAWING DATE:

04-19-16

BY:
TJN

CHECKED BY:
KAD

WELL NAME:

SHULL FED-9-59-31-2124CE

SURFACE LOCATION:

NE1/4 NW1/4 SEC. 31, T9N, R59W, 6TH P.M.
WELD COUNTY, COLORADO

PREPARED FOR:

