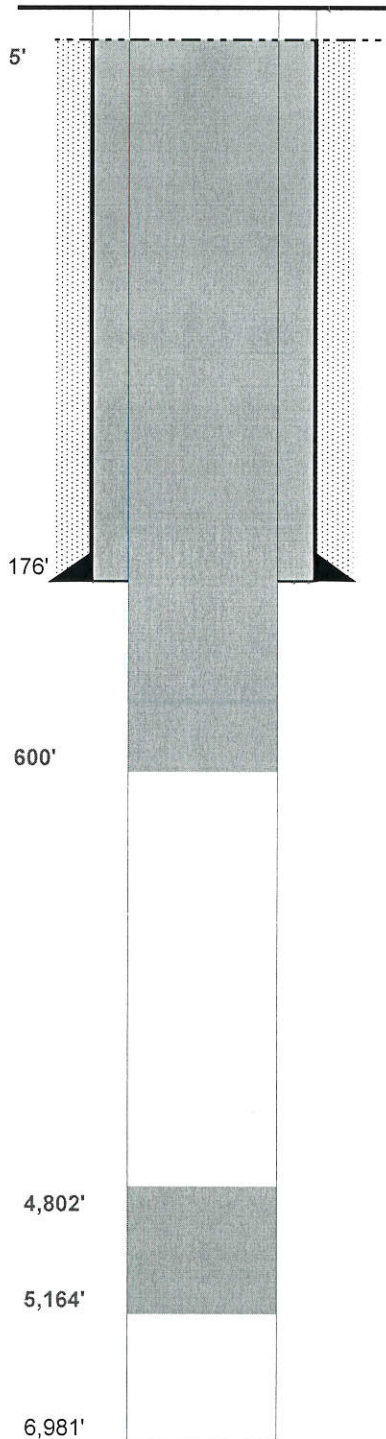


WELL NAME: Stanley #14-23  
OPERATOR: Gear Petroleum Company Inc.  
COMP ZONE: D Sand & J Sand  
LOCATION: 8N 60W S23 SW SW

COUNTY: Weld  
STATE: Colorado  
API: 05-123-10707  
GL/KB: 4911' / 4920'

SPUD: 7/11/82  
COMP: 7/18/82  
ABDN: 7/18/82  
COGCC: DA

*CORRECTED*  
*FINAL WBD*



**SURFACE CASING**

DEPTH: 176' SIZE: 8.625" GRADE: J-55 WT (#/ft): 24.0  
CEMENT: 110 sx - regular cmt. With 3% CaCl2  
COMMENTS: \_\_\_\_\_

**PRODUCTION CASING**

DEPTH: \_\_\_\_\_ SIZE: \_\_\_\_\_ GRADE: \_\_\_\_\_ WT (#/ft): \_\_\_\_\_  
CEMENT: \_\_\_\_\_ TOC: \_\_\_\_\_  
COMMENTS: \_\_\_\_\_

PERFS: \_\_\_\_\_ - \_\_\_\_\_ PROD ZONE 1: D Sand  
PERFS: \_\_\_\_\_ - \_\_\_\_\_ ZONE 2: \_\_\_\_\_  
PERFS: \_\_\_\_\_ - \_\_\_\_\_ ZONE 3: \_\_\_\_\_

**PREVIOUS PLUGS**

RECOVERED: \_\_\_\_\_ SIZE: \_\_\_\_\_  
CMT 1: 155' - 195' COMMENT: 20 sx - half in half out surf csg.  
CMT 2: 0' - 30' COMMENT: 10 sx - surface  
CMT 3: \_\_\_\_\_ - \_\_\_\_\_ COMMENT: \_\_\_\_\_

OTHER: Plug #1: from 5,164' to 4,802' (300 sx)  
Plug #2: 600' to 390' (260 sx)  
Plug #3: 390' to Surface (150 sx)

**FORMATIONS:**

SUSSEX	<u>3,428'</u>
NIOBRARA	<u>6,120'</u>
CARLILE	<u>6,428'</u>
GREENHORN	<u>6,474'</u>
BENONITE	<u>6,839'</u>
D SAND:	<u>6,846'</u>
J SAND	<u>6,927'</u>