

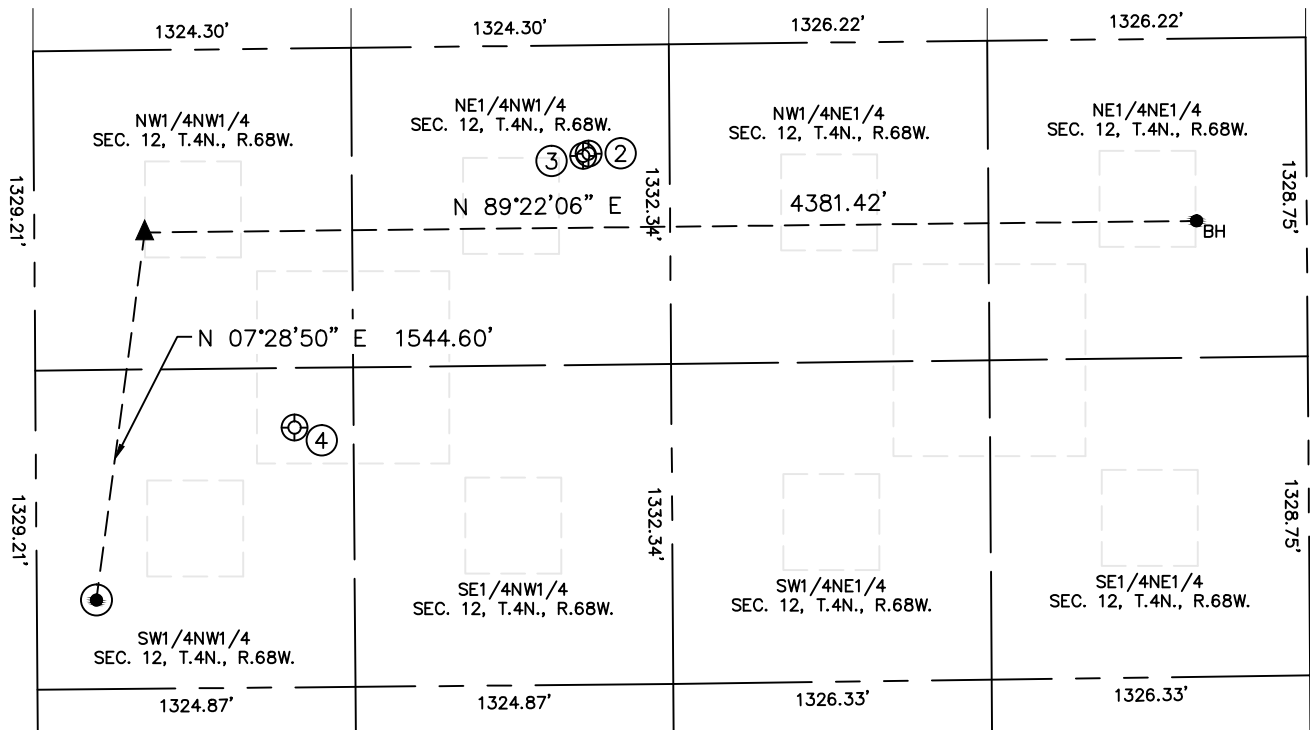


Lat40°, Inc. 6250 W. 10th Street, Unit 2, Greeley, CO 970-515-5294

SITE SKETCH

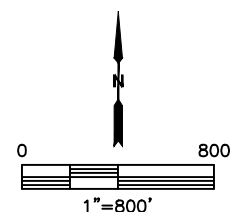
VAIL 2

SECTION: 12
TOWNSHIP: 4N
RANGE: 68W
6TH. P.M.
WELD COUNTY, CO



WELL NO.	WELL NAME	SHL FOOTAGE				SHL LAT°	SHL LONG°	PDOP	ELEV (FT.)	1/4/1/4
2	NLB 2-1-12	452	FNL	2312	FWL	40.33442	-104.95249	1.5	4973	NENW
3	NLB 1-3-12	462	FNL	2289	FWL	40.33440	-104.95257	1.5	4973	NENW
4	VAIL 1	1579	FNL	1078	FWL	40.33132	-104.95691	1.6	4930	SWNW

- LEGEND
- = SURFACE HOLE LOCATION (SHL)
 - ▲ = ENTRY POINT LOCATION (EP)
 - = BOTTOM HOLE LOCATION (BHL)
 - ⊕ = EXISTING WELL
 - ⊗ = ABANDONED WELL



DATE: 5/13/2016
PROJECT#: 2014184