

Click here to reset the form

FORM  
21  
Rev 9/14

State of Colorado  
Oil and Gas Conservation Commission



1120 Lincoln Street, Suite 801, Denver, Colorado 80203 (303)-894-2100 Fax: (303)-894-2109

FOR OGCC USE ONLY

Document Number:

Date Received:

MECHANICAL INTEGRITY TEST

1. Duration of the pressure test must be a minimum of 15 minutes.
2. An original pressure chart must accompany this report if this test was not witnessed by a OGCC representative. Injection wells tests must be witnessed by an OGCC representative.
3. For production wells, test pressures must be at a minimum of 300 psig.
4. New injection wells must be tested to maximum requested injection pressure.
5. For injection wells, test pressures must be at least 300 psig or average injection pressure, whichever is greater.
6. A minimum 300 psi differential pressure must be maintained between the tubing and tubing/casing annulus pressure.
7. Do not use this form if submitting under provisions of Rule 326.a.(1) B. or C.
8. OGCC notification must be provided 10 days prior to the test via Form 42.
9. Packers or bridge plugs, etc., must be set within 100 feet of the perforated interval to be considered a valid test.

Complete the  
Attachment Checklist

OGCC Operator Number: 49100  
Name of Operator: Koch Exploration Company, LLC.  
Address: 950 17th Street #1900  
City: Denver State: CO Zip: 80202  
API Number: 103-10113 OGCC Facility ID Number: 259655  
Well/Facility Name: WRD Unit Well/Facility Number: 29-33 WDW  
Location QtrQtr: NWSE Section: 29 Township: 2N Range: 96W Meridian:

Contact Name and Telephone

Josh Hays

No: (303) 325-2591

Email: josh.hays@kochind.com

Oper OGCC

|                    |        |     |
|--------------------|--------|-----|
| Pressure Chart     | ✓      |     |
| Cement Bond Log    |        |     |
| Tracer Survey      |        |     |
| Temperature Survey |        |     |
| Inspection Number  | 680400 | 502 |

☐ SHUT-IN PRODUCTION WELL

☒ INJECTION WELL

Last MIT Date: 06/23/2011

Test Type:

☐ Test to Maintain SI/TA status

☒ 5- year UIC

☐ Reset Packer

☐ Verification of Repairs

☐ Annual UIC Test

Describe Repairs or Other Well Activities: 5 Year UIC MIT

Wellbore Data at Time of Test

Injection/Producing Zone(s)

Perforated Interval:

Open Hole Interval:

Ohio Creek

3600-3740

Casing Test

Use when perforations or open hole is isolated by bridge plug or cement plug; use if cased-hole only with plug back total depth.

Bridge Plug or Cement Plug Depth

Tubing Casing/Annulus Test

Tubing Size:

2-7/8"

Tubing Depth:

3504'

Top Packer Depth:

3504'

Multiple Packers?

☐ Yes

☒ No

Test Data

|                            |                          |                             |                            |                                   |
|----------------------------|--------------------------|-----------------------------|----------------------------|-----------------------------------|
| Test Date                  | Well Status During Test  | Casing Pressure Before Test | Initial Tubing Pressure    | Final Tubing Pressure             |
| 5/4/16                     | SI                       | Ø                           | 261                        | 251                               |
| Casing Pressure Start Test | Casing Pressure - 5 Min. | Casing Pressure - 10 Min.   | Casing Pressure Final Test | Pressure Loss or Gain During Test |
| 640                        | 640                      | 640                         | 645                        | +5                                |

Test Witnessed by State Representative?

☐ Yes

☐ No

OGCC Field Representative (Print Name):

I hereby certify that the statements made in this form are, to the best of my knowledge, true, correct, and complete.

Print Name:

Signed:

Title:

Date:

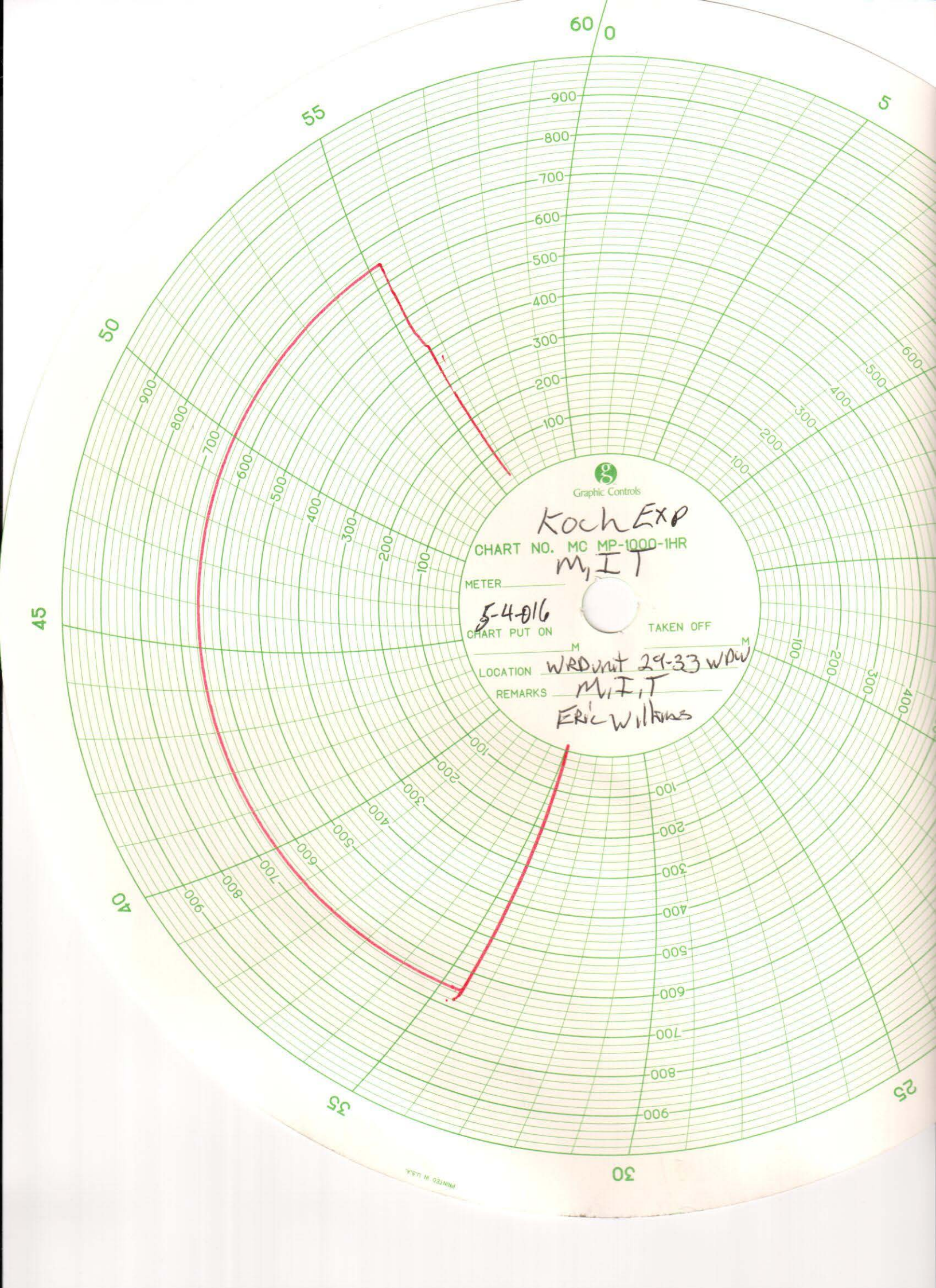
OGCC Approval:

Title:

Date:

Conditions of Approval, if any:





Koch Exp

CHART NO. MC MP-1000-1HR

MIT

METER

5-4-016

CHART PUT ON

TAKEN OFF

LOCATION

WROnt 29-33 WDW

REMARKS

MIT, ERIC Wilkins



