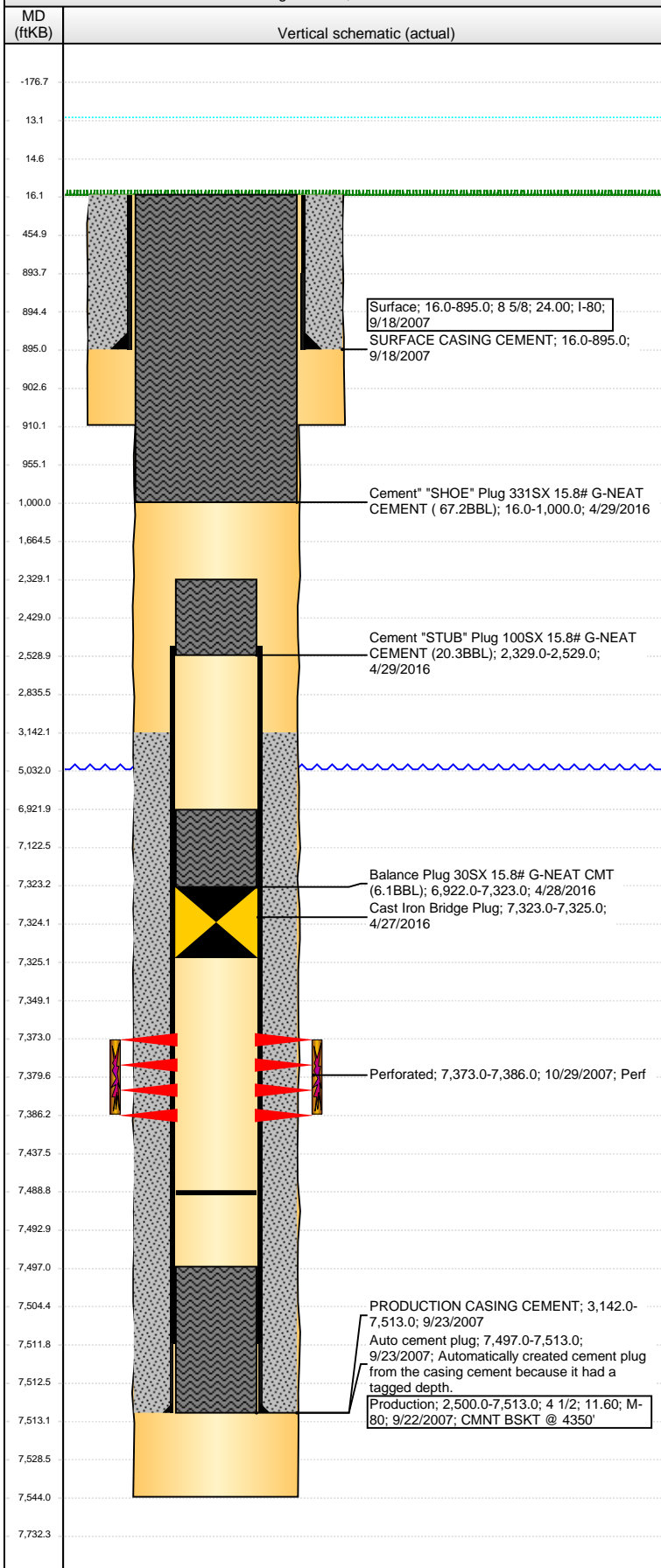


Wellbore Schematic Input Report

Well Name: WADSWORTH 36-13

VERTICAL - Original Hole, 5/16/2016 2:47:32 PM



Well Header

API	Business Unit	District	Well Config
05-123-25222	DJ BASIN	15	VERTICAL
Original KB Elevation (ft)	KB - GL / MSL (ftKB)	Spud Date	P & A Date
4,932	16.00	9/17/2007	4/29/2016

Comment

This well is hand cycled once a month just to show production. The pumper may have forgotten to show the well as cycled over the last couple months. Aaron Luders 5/2/11.
FRAC'D INTO 1/2011.

Directions To Well

76 & 27, W 8/10, SW & W ON EAST SIDE OF DITCH, FOLLOW AROUND FOR 3/10 TO A SET OF GATES. THROUGH GATES 1/4MI S TO SECOND SET OF GATES. THROUGH GATES/CROSS BRIDGE. NW & W 4/10, S 300' INTO

Congressional Location

Quarter 1	Quarter 2	Quarter 3	Quarter 4	Section	Township	Twnshp N...	Range	Rng E/W Dir
		SW	NE	36	7	N	67	W

Bottom Hole Location

North-South Distance (ft)	From N or S Line	East-West Distance (ft)	From E or W Line

Plug Back Total Depths

Date	Depth (ftKB)	Method	Com
9/23/2007	7,457.0	CASED HOLE LOG	DEPTH LOGGER ON CBL
9/23/2007	7,497.0	CASING TALLY	LANDING JOINT
9/29/2009	7,489.0	TAG	C/O & LAND TBG

Wellbore Sections

Section Des	Size (in)	Act Top, MD (ftKB)	Act Btm, MD (ftKB)
SURFACE	12 1/4	16.0	910.0
PRODUCTION	7 7/8	910.0	7,544.0

Zone Statuses

Zone Name	Status Date	Status	Fluid Type	Job	Prod Method
CODELL	11/7/2007	PR		DRILLING/CO...	
CODELL	4/27/2016	P&A		ABANDON WE...	

Casing Strings

Surface, 895.0ftKB

Casing Description	Run Date	OD (in)	Wt/Len (l...)	Grade	Top, MD (ft...)	MD (ftKB)
Surface	9/18/2007	8 5/8	24.00	I-80	16.0	895.0

Production, 7,513.0ftKB

Casing Description	Run Date	OD (in)	Wt/Len (l...)	Grade	Top, MD (ft...)	MD (ftKB)
Production	9/22/2007	4 1/2	11.60	M-80	16.0	7,513.0

Cement

Description	Top Depth (ftKB)	Bottom Depth (ftKB)
SURFACE CASING CEMENT	16.0	895.0
PRODUCTION CASING CEMENT	3,142.0	7,513.0
Balance Plug 30SX 15.8# G-NEAT CMT (6.1BBL)	6,922.0	7,323.0
Cement "STUB" Plug 100SX 15.8# G-NEAT CEMENT (20.3BBL)	2,329.0	2,529.0
Cement "SHOE" Plug 331SX 15.8# G-NEAT CEMENT (67.2BBL)	16.0	1,000.0

Tubing Strings

Tubing Description	Run Date	String...	ID (in)	Wt (lb/ft)	Grade	Len (ft)	Set De...
Tubing - Production	9/29/2009	2 3/8		4.70	?	7,314.00	

Perforation Data

Zone	Bnch/St g	Entered Shot Total	Top (ftKB)	Btm (ftKB)	Date
CODELL, Original Hole		52	7,373.00	7,386.00	10/29/2007

Stimulations & Treatments

Date	Zone	Primary Job Type
10/30/2007	CODELL, Original Hole	DRILLING/COMPLETION - ORIGINAL
Technical Result	Tech Result Details	Tech Result Note
Failure	Screen-Out	

Comment

SCREENED OUT W/ 8 BBLS LEFT IN FLUSH

Other In Hole

Run Date	Des	OD (in)	Top (ftKB)	Btm (ftKB)
4/27/2016	Cast Iron Bridge Plug	4	7,323.0	7,325.0

Well Name: WADSWORTH 36-13

VERTICAL - Original Hole, 5/16/2016 2:47:35 PM

Logs

Date	Type	Top, MD (ftKB)	Btm, MD (ftKB)
9/23/2007	CBL/CCL/GR	3,100.0	7,455.0
9/23/2007	COMPENSATED DENSITY	3,640.0	7,524.0
9/23/2007	INDUCTION	895.0	7,544.0
12/7/2015	GYRO	0.0	7,250.0

