



NIGHTHAWK PRODUCTION LLC

Telluride 13-2  
SW SW Sec 2, T6S, R54W  
LINCOLN COUNTY, COLORADO  
API No. 05-73-06562-00

ELEVATION

R.B. 5201'

G.L. 5186'

KB 15'

BHT

BHP

Spud date: 11/21/13

TD date: 12/08/13

Completion

Lat: 39.551940

Long: -103.41556

542' FSL 350' FWL Surface

648' FSL 651' FWL Bottom Hole

Geological tops:

Niobrara 3725 Cherokee 7370

Dakota 4611 Atoka 7574

Stone Correl 5983 Morrow 7864

Wolfcamp 6170 Spergin 8082

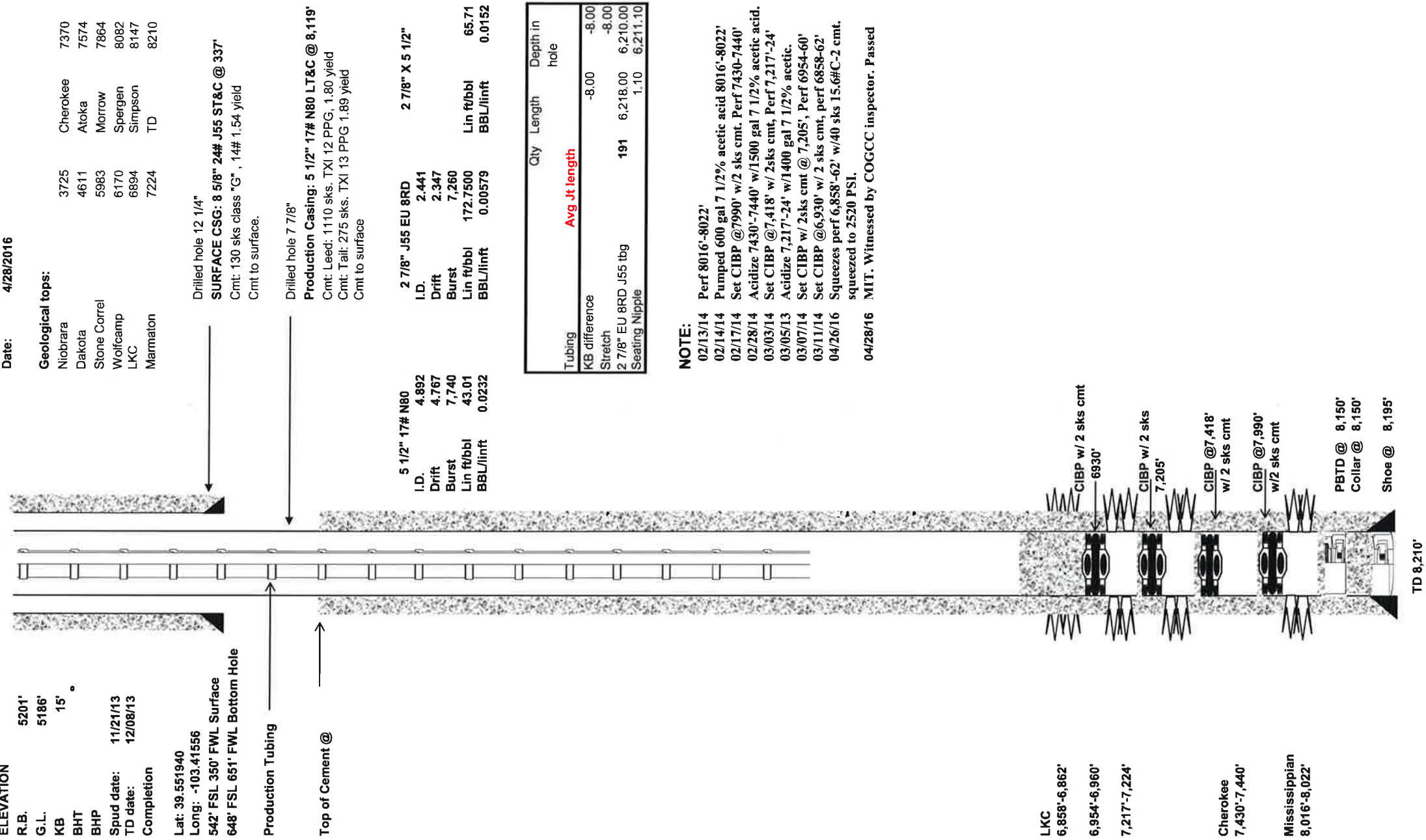
LKC 6894 Simpson 8147

Marmaton 7224 TD 8210

Prepared By: Harold Mayland

Date: 4/28/2016

Not to scale



Drilled hole 12 1/4"  
**SURFACE CSG: 5 1/2" 17# N80 LT&C @ 8,119'**  
Cmt: 130 sks class "G", 14# 1.54 yield  
Cmt to surface.

Drilled hole 7 7/8"  
**Production Casing: 5 1/2" 17# N80 LT&C @ 8,119'**  
Cmt: Lead: 1110 sks, TXI 12 PPG, 1.80 yield  
Cmt: Tail: 275 sks, TXI 13 PPG 1.89 yield  
Cmt to surface

5 1/2" 17# N80		2 7/8" J55 EU 8RD		2 7/8" X 5 1/2"	
I.D.	4.892	I.D.	2.441		
Drift	4.767	Drift	2.347		
Burst	7.740	Burst	7.260		
Lin ft/bbl	43.01	Lin ft/bbl	172.7500	Lin ft/bbl	65.71
BBL/linft	0.0232	BBL/linft	0.00579	BBL/linft	0.0152

Tubing	Qty	Length	Depth in hole
KB difference	Avg Jk length		-8.00
Stretch			-8.00
2 7/8" EU 8RD J55 tbg	191	6,218.00	6,210.00
Seating Nipple		1.10	6,211.10

**NOTE:**  
02/13/14 Perf 8016'-8022'  
02/14/14 Pumped 600 gal 7 1/2% acetic acid 8016'-8022'  
02/17/14 Set CIBP @7990' w/2 sks cmt. Perf 7430-7440'  
02/28/14 Acidize 7430'-7440' w/1500 gal 7 1/2% acetic acid.  
03/03/14 Set CIBP @7,418' w/ 2sks cmt, Perf 7,217'-24'  
03/05/13 Acidize 7,217'-24' w/1400 gal 7 1/2% acetic.  
03/07/14 Set CIBP w/ 2sks cmt @ 7,205', Perf 6954-60'  
03/11/14 Set CIBP @6,930' w/ 2 sks cmt, perf 6858-62'  
04/26/16 Squeezes perf 6,858'-62' w/40 sks 15.6#C-2 cmt, squeezed to 2520 PSI.  
04/28/16 MIT. Witnessed by COGCC inspector. Passed

LKC  
6,858'-6,862'  
6,954'-6,960'  
7,217'-7,224'

Cherokee  
7,430'-7,440'

Mississippian  
8,016'-8,022'

PBTD @ 8,150'  
Collar @ 8,150'  
Shoe @ 8,195'

TD 8,210'