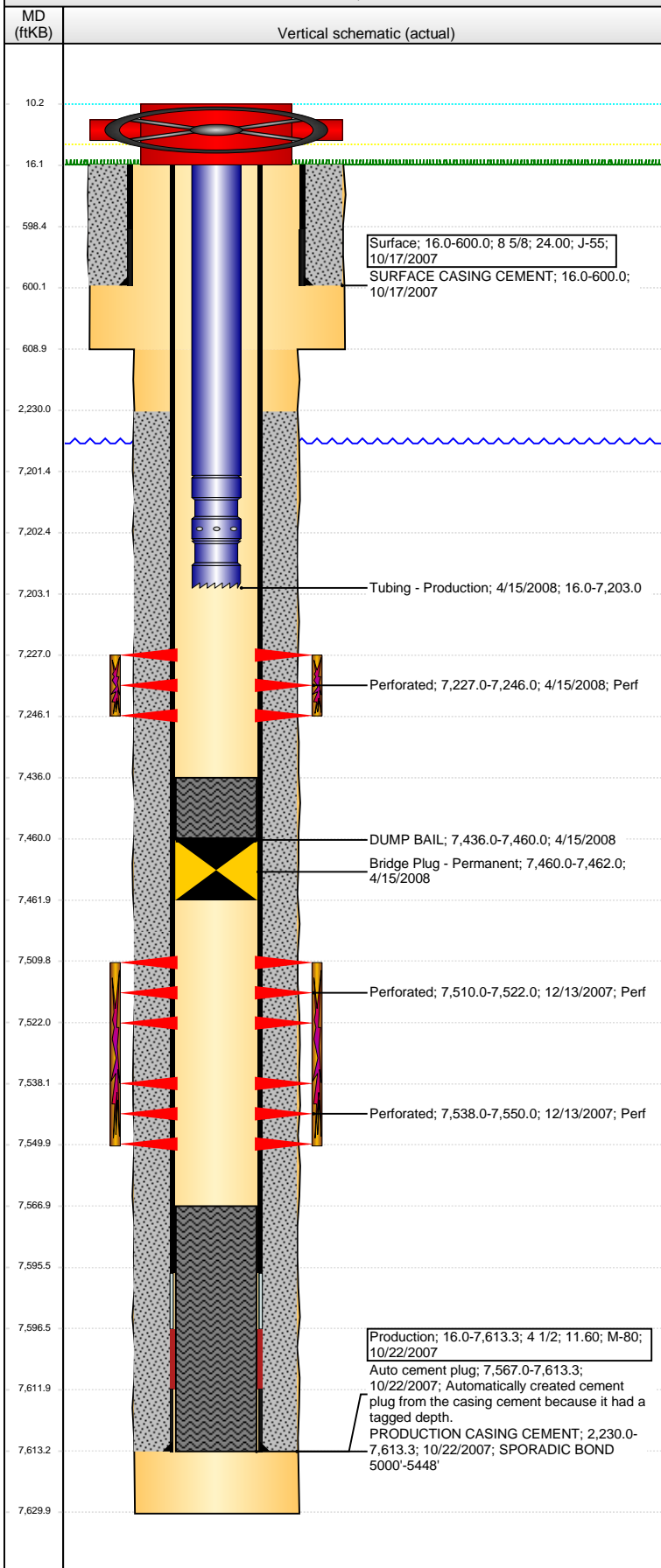


Well Name: CERVI USX CC21-14

VERTICAL - ORIGINAL HOLE, 5/16/2016 12:01:34 PM



Well Header									
API 05-123-26038		Business Unit DJ BASIN		District 15		Well Config VERTICAL			
Original KB Elevation (ft) 4,815		KB - GL / MSL (ftKB) 16.00		Spud Date 10/16/2007		P & A Date			
Comment DRILL & COMPLETED IN DAKOTA & J SAND; DKTA NEVER PRODUCED; J SD COMPLETED BUT NEVER TURNED ON UNTIL 1/2011									
Directions To Well SEE MAP IN FILE.									
Congressional Location									
Quarter 1	Quarter 2	Quarter 3 SE	Quarter 4 SW	Section 21	Township 4 N	Twnshp N...	Range 63	Rng E/W Dir W	
Bottom Hole Location									
North-South Distance (ft)			From N or S Line		East-West Distance (ft)			From E or W Line	
Plug Back Total Depths									
Date	Depth (ftKB)	Method			Com				
10/22/2007	7,595.6	CASING TALLY			FLOAT COLLAR				
12/13/2007	7,567.0	CASED HOLE LOG			DEPTH LOGGER ON CBL				
4/15/2008	7,460.0	TAG			CIBP OVER DAKOTA W/ 2 SX CEMENT				
Wellbore Sections									
Section Des			Size (in)		Act Top, MD (ftKB)		Act Btm, MD (ftKB)		
SURFACE			12 1/4		16.0		609.0		
PRODUCTION			7 7/8		609.0		7,630.0		
Zone Statuses									
Zone Name	Status Date	Status	Fluid Type		Job	Prod Method			
DAKOTA	4/15/2008	AB			DRILLING/CO...				
J SAND	1/9/2011	PR			DRILLING/CO...				
Casing Strings									
Surface, 600.0ftKB									
Casing Description		Run Date	OD (in)	Wt/Len (l...	Grade	Top, MD (ft...	MD (ftKB)		
Surface		10/17/2007	8 5/8	24.00	J-55	16.0	600.0		
Production, 7,613.3ftKB									
Casing Description		Run Date	OD (in)	Wt/Len (l...	Grade	Top, MD (ft...	MD (ftKB)		
Production		10/22/2007	4 1/2	11.60	M-80	16.0	7,613.3		
Cement									
Description					Top Depth (ftKB)		Bottom Depth (ftKB)		
SURFACE CASING CEMENT					16.0		600.0		
Description					Top Depth (ftKB)		Bottom Depth (ftKB)		
PRODUCTION CASING CEMENT					2,230.0		7,613.3		
Description					Top Depth (ftKB)		Bottom Depth (ftKB)		
DUMP BAIL					7,436.0		7,460.0		
Tubing Strings									
Tubing Description		Run Date	String...	ID (in)	Wt (lb/ft)	Grade	Len (ft)	Set De...	
Tubing - Production		4/15/2008	2 3/8	1.995	4.70	J-55	7,187.00		
Tubing Components									
Item Des		OD (in)	Wt (lb/ft)	Grade	Jts	Len (ft)	Btm (ftKB)	Btm (TVD) (ftKB)	
Tubing		2 3/8	4.70	J-55	234	7,185.50	7,201.5		
Pump Seating		2 3/8			1	1.00	7,202.5		
Nipple									
Notched collar		2 3/8			1	0.50	7,203.0		
Perforation Data									
Zone		Bnch/St g	Entered Shot Total	Top (ftKB)		Btm (ftKB)		Date	
J SAND, ORIGINAL HOLE			76	7,227.00		7,246.00		4/15/2008	
DAKOTA, ORIGINAL HOLE			48	7,510.00		7,522.00		12/13/2007	
DAKOTA, ORIGINAL HOLE			48	7,538.00		7,550.00		12/13/2007	
Stimulations & Treatments									
Date 12/27/2007	Zone DAKOTA, ORIGINAL HOLE			Primary Job Type DRILLING/COMPLETION - ORIGINAL					
Technical Result			Tech Result Details			Tech Result Note			
Comment FRAC'D VIA TRIPLE ENTRY									

Well Name: CERVI USX CC21-14

VERTICAL - ORIGINAL HOLE, 5/16/2016 12:01:36 PM

Stimulations & Treatments

Date 5/6/2008	Zone J SAND, ORIGINAL HOLE	Primary Job Type DRILLING/COMPLETION - ORIGINAL
Technical Result Success	Tech Result Details According to Plan	Tech Result Note

Comment
EST. CLOSURE = 3,644 PSI, 0.504 PSI/FT, EST. PRES= 3,577 PSI. 7 PERFS OF 76 OPEN, PERF FRICTION = 1312 PSI, NWB FRICTION = 543 PSI, LEAKOFF COEFF. = 0.00703. PRE-FRAC ISIP = 830 PSI, 5-MIN = 564 PSI (266 PSI LEAK OFF) , 15-MIN= 290 PSI, POST-FRAC ISIP = 1,824 PSI, 5-MIN = 1,675 PSI. TREATMENT WENT WELL. LOST POWER TO FLOW METER FOR SHORT PERIOD, TREATMENT EXHIBITED A POSITIVE PRESSURE RESPONSE WITH AN AVERAGE NOLTE = 0.128. SHUT IN 1 HR. OPENED UP WELL WITH 650 PSI. WELL DIED IMMEDIATELY. WORKED TO ESTABLISH FLOW, BUT WOULD NOT KICK OFF. SI FOR NIGHT.

Other In Hole

Run Date	Des	OD (in)	Top (ftKB)	Btm (ftKB)
4/15/2008	Bridge Plug - Permanent	4	7,460.0	7,462.0

Logs

Date	Type	Top, MD (ftKB)	Btm, MD (ftKB)
10/21/2007	COMPENSATED DENSITY	2,640.0	7,603.0
10/21/2007	INDUCTION	600.0	7,623.0
12/13/2007	CEMENT BOND	2,090.0	7,565.0

