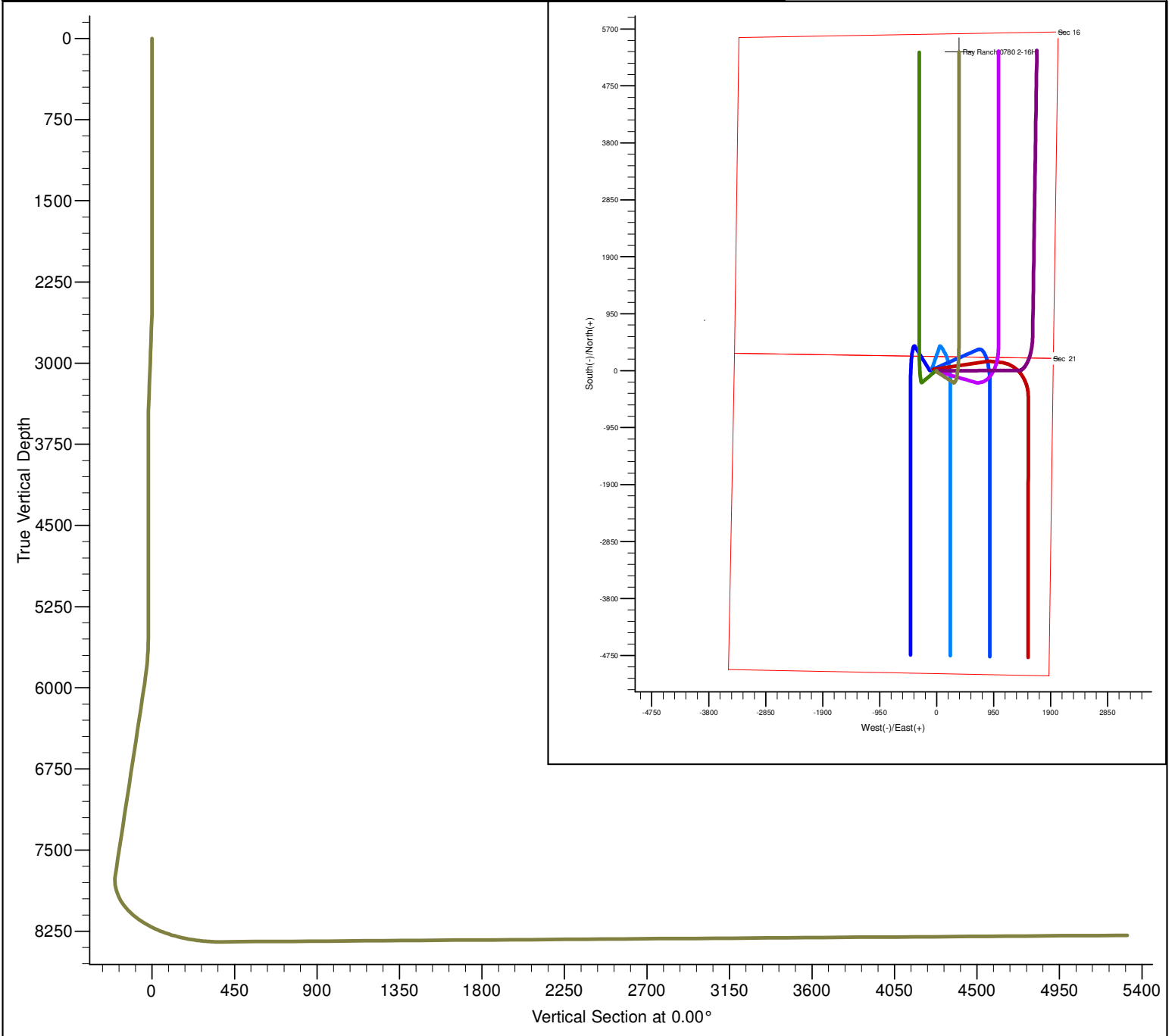


PROJECT DETAILS: North Park Basin										<div><div><div><div></div><div>G</div></div><div><div></div><div>T</div></div><div><div></div><div>M</div></div></div><div><div></div></div></div> <div><div><div></div><div>True North: 0.57°</div></div><div><div></div><div>Magnetic North: 10.44°</div></div></div> <div><div><div></div><div>Magnetic Field</div></div><div><div></div><div>Strength: 53183.8snT</div></div><div><div></div><div>Dip Angle: 66.97°</div></div><div><div></div><div>Date: 12/31/2009</div></div><div><div></div><div>Model: IGRF200510</div></div></div>			
Geodetic System: US State Plane 1983 Datum: North American Datum 1983 Ellipsoid: GRS 1980 Zone: Colorado Northern Zone System Datum: Mean Sea Level													
FORMATION TOP DETAILS												CASING DETAILS	
TVDPPath		MDPath		Formation		DipAngle		DipDir		No casing data is available			
6498.0		6507.7		Shannon		0.00							
7905.0		7934.8		Niobrara		0.00							
DESIGN DETAILS: Design #1												Project: North Park Basin Site: T7N-R80W-S21 Well: Ray Ranch 0780 2-16H Wellbore: Wellbore #1 Design: Design #1	
0' Vertical Section coordinates													
Type	Target	Azimuth	Origin	Type	N/S	E/W	From	TVD					
Target		0.00	Slot		0.0	0.0		0.0					



SECTION DETAILS											
Sec	MD	Inc	Azi	TVD	+N/-S	+E/-W	Dleg	TFace	VSect	Target	
1	0.0	0.00	0.00	0.0	0.0	0.0	0.00	0.00	0.0		
2	2500.0	0.00	0.00	2500.0	0.0	0.0	0.00	0.00	0.0		
3	2561.0	1.22	180.00	2561.0	-0.6	0.0	2.00	180.00	-0.6		
4	3439.2	1.22	180.00	3439.0	-19.4	0.0	0.00	0.00	-19.4		
5	3500.2	0.00	0.00	3500.0	-20.0	0.0	2.00	180.00	-20.0		
6	5500.2	0.00	0.00	5500.0	-20.0	0.0	0.00	0.00	-20.0		
7	5976.5	9.53	122.60	5974.1	-41.3	33.3	2.00	122.60	-41.3		
8	7756.7	9.53	122.60	7729.7	-200.0	281.5	0.00	0.00	-200.0		
9	8714.7	90.70	0.00	8347.4	377.6	369.9	10.00	-122.14	377.6	Ray Ranch 2 Target	
10	13656.5	90.70	0.00	8287.0	5319.0	370.0	0.00	0.00	5319.0	Ray Ranch 2 Target	