

April 11, 2016



410 17th Street, Suite 1400
Denver, CO 80202
(720) 440-6100 phone
(720) 305-0804 fax

BonanzaCrk.com

Colorado Oil and Gas Conservation Commission
The Chancery Building
1120 Lincoln Street, Suite 801
Denver, CO 80203
Matthew Lepore, Director

Re: Notice of 318A.a.(4)D. Proposed Niobrara Horizontal Wellbore Spacing Unit

Pronghorn 24-7-6XRLNB

SHL: SWSW (428' FNL, 1445' FWL) Section 18-T5N-R61W, Weld County, CO
Top of Production: (631' FSL, 1980' FWL) Section 7-T5N-R61W, Weld County, CO
Bottom of Production: (470' FNL, 1980' FWL) Section 6-T5N-R61W, Weld County, CO

Director Lepore:

Bonanza Creek Energy Operating Company LLC, (Bonanza) intends to permit, drill and operate the referenced Niobrara Formation Horizontal Well. As defined by Colorado Oil and Gas Conservation Commission (COGCC) Rule 318A.a.(4)D., Bonanza proposes the following wellbore spacing unit:

E/2W/2 and W/2E/2 Section 6-T5N-R61W, E/2W/2 and W/2E/2 Section 7-T5N-R61W, Weld County, Colorado; containing 640 acres more or less.

Bonanza has notified the other owners in the unit and no objections were received. Copies of the notifications are maintained in Bonanza's files.

Bonanza respectfully requests that you review the enclosed wellbore spacing unit documentation and approve the referenced APD.

Please do not hesitate to call or email me, directly, at (303) 803-1718 or JVigil@BonanzaCrk.com, should you have any questions pertaining to this matter.

Sincerely,

Julie L. Vigil
Sr. Regulatory Specialist
BONANZA CREEK ENERGY OPERATING COMPANY, LLC

Z:\Projects\1318-00\BONANZA\BONANZA\PRONGHORN\CD\PRONGHORN.dwg 13-03-2015 16:18

3.25" AC LS7735
WITH STONE
LAT 40.40849°N
LONG 104.26190°W

3.25" AC LS7242
LAT 40.40854°N
LONG 104.24288°W

428
1445
N28°14'20"E
1099.50'
SURFACE LOCATION

5296.79'
S89°00'32"W

NOTE: UNDER COLORADO LAW, YOU
MUST COMMENCE ANY LEGAL ACTION
BASED ON ANY DEFECT IN THIS
CERTIFICATE WITHIN THREE YEARS
AFTER DEFECT IS DISCOVERED. IN NO
EVENT MAY ANY ACTION BASED UPON
ANY DEFECT IN THIS SURVEY BE
COMMENCED MORE THAN TEN YEARS
AFTER DATE OF THIS CERTIFICATE
SHOWN HEREON. (13-80105 C.R.S.)

N00°53'56"W
5358.88'

T5N R61W
18

3.25" AC LS7735
LAT 40.39364°N
LONG 104.26177°W

S01°09'28"E
5408.68'

5272.67'
S88°28'05"W

3.25" AC LS7242
LAT 40.39383°N
LONG 104.24285°W

NOTES:

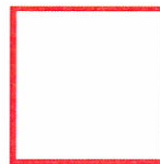
- ALL BEARINGS ARE GRID BASED UPON THE COLORADO STATE PLANE COORDINATE SYSTEM, NORTH ZONE, NAD83(2011) DERIVED FROM POST-PROCESSED STATIC GPS OBSERVATIONS.
- DISTANCES ARE ON GRID
- VERTICAL DATUM IS NAVD88 BASED UPON GPS OBSERVATIONS
- PDOP VALUE EQUALS 1.6.
- GPS OPERATOR: MIKE JOHNSON.
- UNDISTURBED GROUND ELEVATION AT WELLHEAD = 4565'
- ALL SECTION LENGTHS ARE MEASURED DISTANCES UNLESS NOTED BY (R), RECORD

CERTIFICATE OF SURVEYOR:

I, DAVID A. FEHRINGER OF LANDER, WYOMING HEREBY CERTIFY THAT THIS WELL LOCATION CERTIFICATE WAS PREPARED FROM NOTES TAKEN DURING AN ACTUAL SURVEY ON DECEMBER 15, 2015; AND THAT IT CORRECTLY SHOWS THE DRILLING LOCATION OF BONANZA CREEK ENERGY, INC., PRONGHORN 24-7-6XRLNB AS STAKED DURING SAID SURVEY. THIS MAP DOES NOT REPRESENT A



**BONANZA
CREEK**



Wellbore Spacing Unit Outline



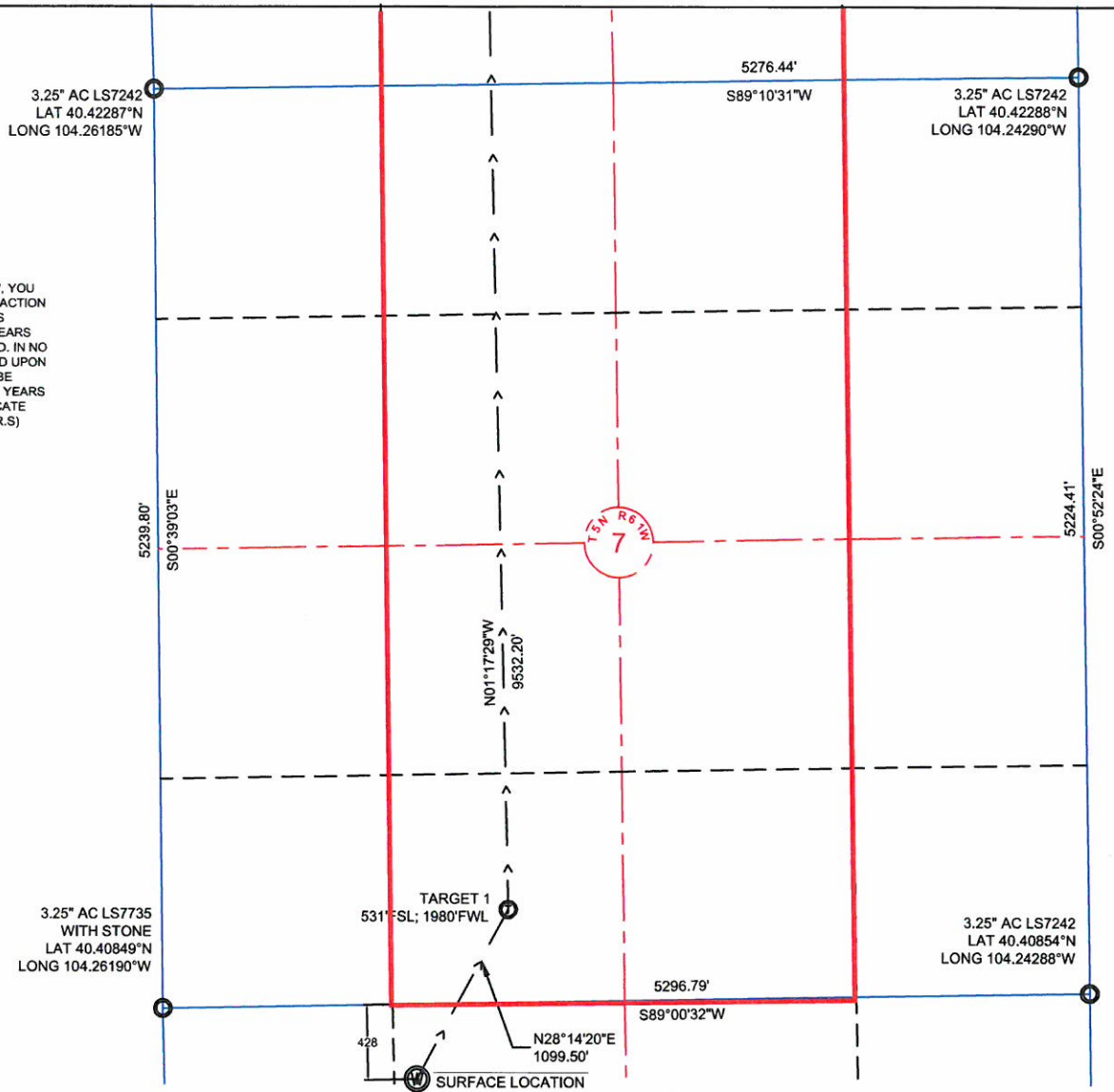
Proposed Spacing Unit Map

December 28, 2015
KK

Pronghorn 24-7-6XRLNB
E/2W/2 and W/2E/2 Sec. 6-T5N-R61W
E/2W/2 and W/2E/2 Sec. 7-T5N-R61W
Weld County, Colorado

Z:\Projects\1318-00\BONANZA\DWG\PRONGHORN\DWG\PROPOSED SPACING UNIT MAP.DWG 2015-12-03 16:18

NOTE: UNDER COLORADO LAW, YOU MUST COMMENCE ANY LEGAL ACTION BASED ON ANY DEFECT IN THIS CERTIFICATE WITHIN THREE YEARS AFTER DEFECT IS DISCOVERED. IN NO EVENT MAY ANY ACTION BASED UPON ANY DEFECT IN THIS SURVEY BE COMMENCED MORE THAN TEN YEARS AFTER DATE OF THIS CERTIFICATE SHOWN HEREON. (13-80105 C.R.S.)



NOTES:

- ALL BEARINGS ARE GRID BASED UPON THE COLORADO STATE PLANE COORDINATE SYSTEM, NORTH ZONE, NAD83(2011) DERIVED FROM POST-PROCESSED STATIC GPS OBSERVATIONS.
- DISTANCES ARE ON GRID
- VERTICAL DATUM IS NAVD88 BASED UPON GPS OBSERVATIONS
- PDP VALUE EQUALS 1.6.
- GPS OPERATOR: MIKE JOHNSON.
- UNDISTURBED GROUND ELEVATION AT WELLHEAD = 4565'
- ALL SECTION LENGTHS ARE MEASURED DISTANCES UNLESS NOTED BY (R), RECORD BEARING AND DISTANCE.
- NEAREST CULTURAL DISTANCES
 - BUILDINGS: 5280' +/-
 - BUILDING UNIT: 5280' +/-
 - HIGH OCCUPANCY BUILDING UNIT: 5280' +/-
 - DESIGNATED OUTSIDE ACTIVITY AREA: 5280' +/-
 - PUBLIC ROAD: 421' +/-
 - ABOVE GROUND UTILITY: 5280' +/-
 - RAILROAD: 5280' +/-
 - PROPERTY LINE: 5280' +/-

CERTIFICATE OF SURVEYOR:

I, DAVID A. FEHRINGER OF LANDER, WYOMING HEREBY CERTIFY THAT THIS WELL LOCATION CERTIFICATE WAS PREPARED FROM NOTES TAKEN DURING AN ACTUAL SURVEY ON DECEMBER 15, 2015; AND THAT IT CORRECTLY SHOWS THE DRILLING LOCATION OF BONANZA CREEK ENERGY, INC., PRONGHORN 24-7-6XRLNB AS STAKED DURING SAID SURVEY. THIS MAP DOES NOT REPRESENT A BOUNDARY SURVEY OR AN IMPROVEMENT LOCATION PLAT AND SHOULD NOT BE USED FOR THE ESTABLISHMENT OF BOUNDARY LINES.

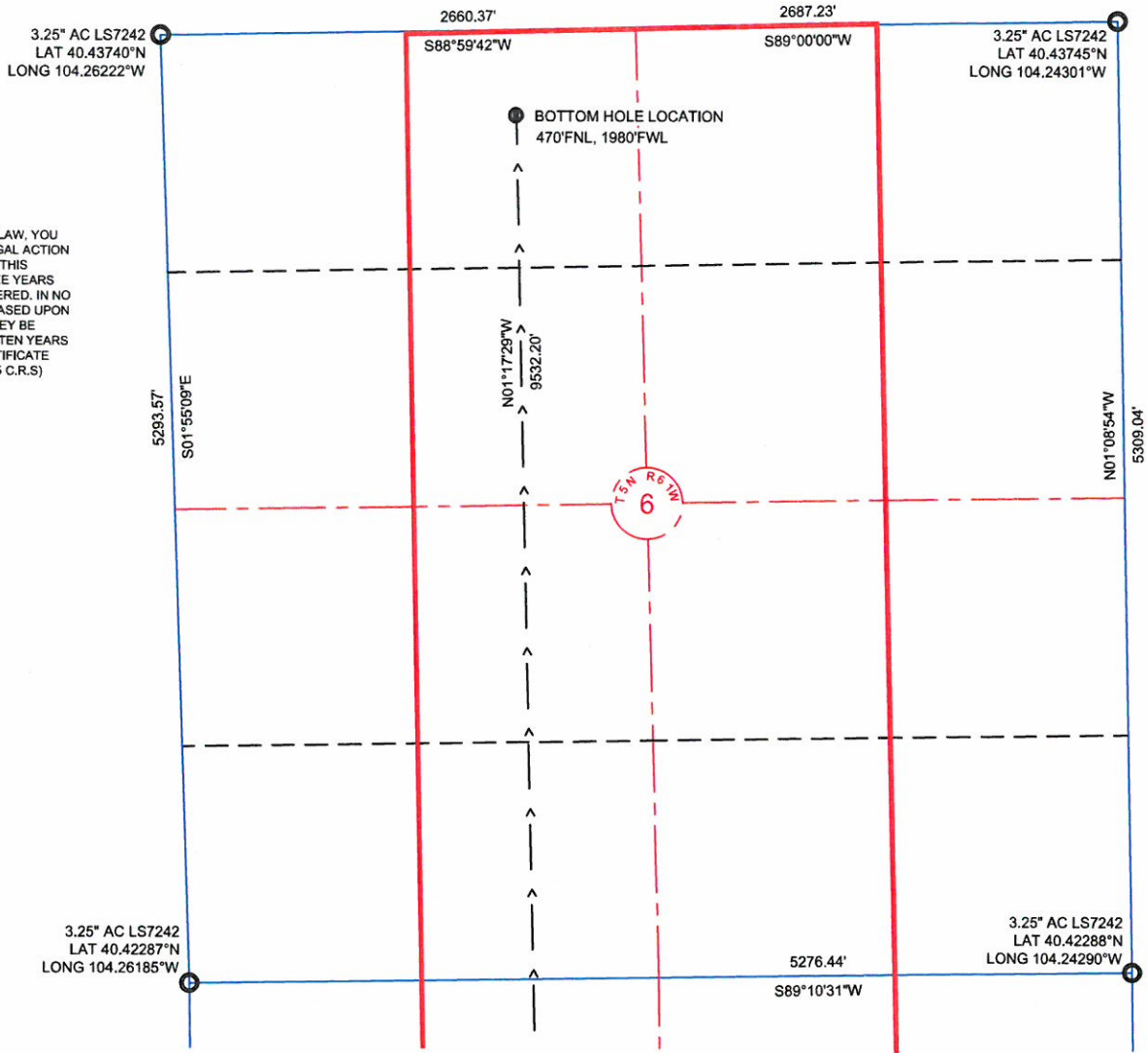


Proposed Spacing Unit Map

December 28, 2015

Page 2

NOTE: UNDER COLORADO LAW, YOU MUST COMMENCE ANY LEGAL ACTION BASED ON ANY DEFECT IN THIS CERTIFICATE WITHIN THREE YEARS AFTER DEFECT IS DISCOVERED. IN NO EVENT MAY ANY ACTION BASED UPON ANY DEFECT IN THIS SURVEY BE COMMENCED MORE THAN TEN YEARS AFTER DATE OF THIS CERTIFICATE SHOWN HEREON. (13-80105 C.R.S.)



NOTES:

- ALL BEARINGS ARE GRID BASED UPON THE COLORADO STATE PLANE COORDINATE SYSTEM, NORTH ZONE, NAD83(2011) DERIVED FROM POST-PROCESSED STATIC GPS OBSERVATIONS.
- DISTANCES ARE ON GRID
- VERTICAL DATUM IS NAVD88 BASED UPON GPS OBSERVATIONS
- PDOP VALUE EQUALS 1.6.
- GPS OPERATOR: MIKE JOHNSON.
- UNDISTURBED GROUND ELEVATION AT WELLHEAD = 4565'
- ALL SECTION LENGTHS ARE MEASURED DISTANCES UNLESS NOTED BY (R), RECORD BEARING AND DISTANCE.
- NEAREST CULTURAL DISTANCES
 - BUILDINGS: 5280' +/-
 - BUILDING UNIT: 5280' +/-
 - HIGH OCCUPANCY BUILDING UNIT: 5280' +/-
 - DESIGNATED OUTSIDE ACTIVITY AREA: 5280' +/-
 - PUBLIC ROAD: 421' +/-
 - ABOVE GROUND UTILITY: 5280' +/-
 - RAILROAD: 5280' +/-
 - PROPERTY LINE: 5280' +/-

CERTIFICATE OF SURVEYOR:

I, DAVID A. FEHRINGER OF LANDER, WYOMING HEREBY CERTIFY THAT THIS WELL LOCATION CERTIFICATE WAS PREPARED FROM NOTES TAKEN DURING AN ACTUAL SURVEY ON DECEMBER 15, 2015; AND THAT IT CORRECTLY SHOWS THE DRILLING LOCATION OF BONANZA CREEK ENERGY, INC., PRONGHORN 24-7-6XRLNB AS STAKED DURING SAID SURVEY. THIS MAP DOES NOT REPRESENT A BOUNDARY SURVEY OR AN IMPROVEMENT LOCATION PLAT AND SHOULD NOT BE USED FOR THE ESTABLISHMENT OF BOUNDARY LINES.



Proposed Spacing Unit Map

December 28, 2015

Page 3