

Z:\PROJECTS\1319-01\BONANZA\CONV\61W\DWG\PRONGHORN\16-08\PRONGHORN-16-CERTS\REVISED\2016-05-10 18:19

3.25" AC LS7735
WITH STONE
LAT 40.40849°N
LONG 104.26190°W

428

N28°14'20"E
1099.50'

SURFACE LOCATION

1445

5296.79'

S89°00'32"W

3.25" AC LS7242
LAT 40.40854°N
LONG 104.24288°W

N00°53'56"W
5358.88'

T5W R6W
18

3.25" AC LS7735
LAT 40.39364°N
LONG 104.26177°W

S01°09'28"E
5408.68'

5272.67'

S88°28'05"W

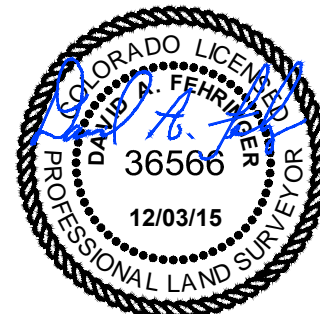
3.25" AC LS7242
LAT 40.39383°N
LONG 104.24285°W

NOTES:

- ALL BEARINGS ARE GRID BASED UPON THE COLORADO STATE PLANE COORDINATE SYSTEM, NORTH ZONE, NAD83(2011) DERIVED FROM POST-PROCESSED STATIC GPS OBSERVATIONS.
- DISTANCES ARE ON GRID
- VERTICAL DATUM IS NAVD88 BASED UPON GPS OBSERVATIONS
- PDOP VALUE EQUALS 1.6.
- GPS OPERATOR: MIKE JOHNSON.
- UNDISTURBED GROUND ELEVATION AT WELLHEAD = 4565'
- ALL SECTION LENGTHS ARE MEASURED DISTANCES UNLESS NOTED BY (R), RECORD BEARING AND DISTANCE.
- NEAREST CULTURAL DISTANCES
BUILDINGS: 5280' +/-
BUILDING UNIT: 5280' +/-
HIGH OCCUPANCY BUILDING UNIT: 5280'+
DESIGNATED OUTSIDE ACTIVITY AREA: 5280'+
PUBLIC ROAD: 421'+
ABOVE GROUND UTILITY: 401' +/-
RAILROAD: 5280'+
PROPERTY LINE: 1445' +/-

CERTIFICATE OF SURVEYOR:

I, DAVID A. FEHRINGER OF LANDER, WYOMING HEREBY CERTIFY THAT THIS WELL LOCATION CERTIFICATE WAS PREPARED FROM NOTES TAKEN DURING AN ACTUAL SURVEY ON DECEMBER 15, 2015; AND THAT IT CORRECTLY SHOWS THE DRILLING LOCATION OF BONANZA CREEK ENERGY, INC., PRONGHORN 24-7-6XRLNB AS STAKED DURING SAID SURVEY. THIS MAP DOES NOT REPRESENT A BOUNDARY SURVEY OR AN IMPROVEMENT LOCATION PLAT AND SHOULD NOT BE USED FOR THE ESTABLISHMENT OF BOUNDARY LINES.

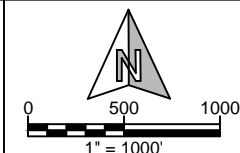


5	STATE PLANE COORDINATES			
24-7-6XRLNB	LATITUDE	LONGITUDE	NORTHING	EASTING
SURFACE	40.40733	104.25670	1393657.89	3346222.59
TARGET 1	40.40997	104.25479	1394626.53	3346742.82
BOTTOM HOLE	40.43613	104.25508	1404156.31	3346528.00



**WILLIAM H. SMITH &
ASSOCIATES, Inc.**
155 N. 1st Street
Lander, WY 82520
Phone: 307-335-5646

Drawn By: MAM
Job No.:
Revision: 1 Change Surface Locations 12-02-15



IF BAR LENGTH DOES NOT EQUAL
1"(ONE INCH), THIS PAGE WAS NOT
PLOTTED TO THE INTENDED SCALE.

LOCATION CERTIFICATE

PRONGHORN
24-7-6XRLNB
NE¼ NW¼, SECTION 18,
T.5N., R.61W., 6th PM
WELD COUNTY, COLORADO



410 17th Street
Denver, CO 80202
(720) 440-6100

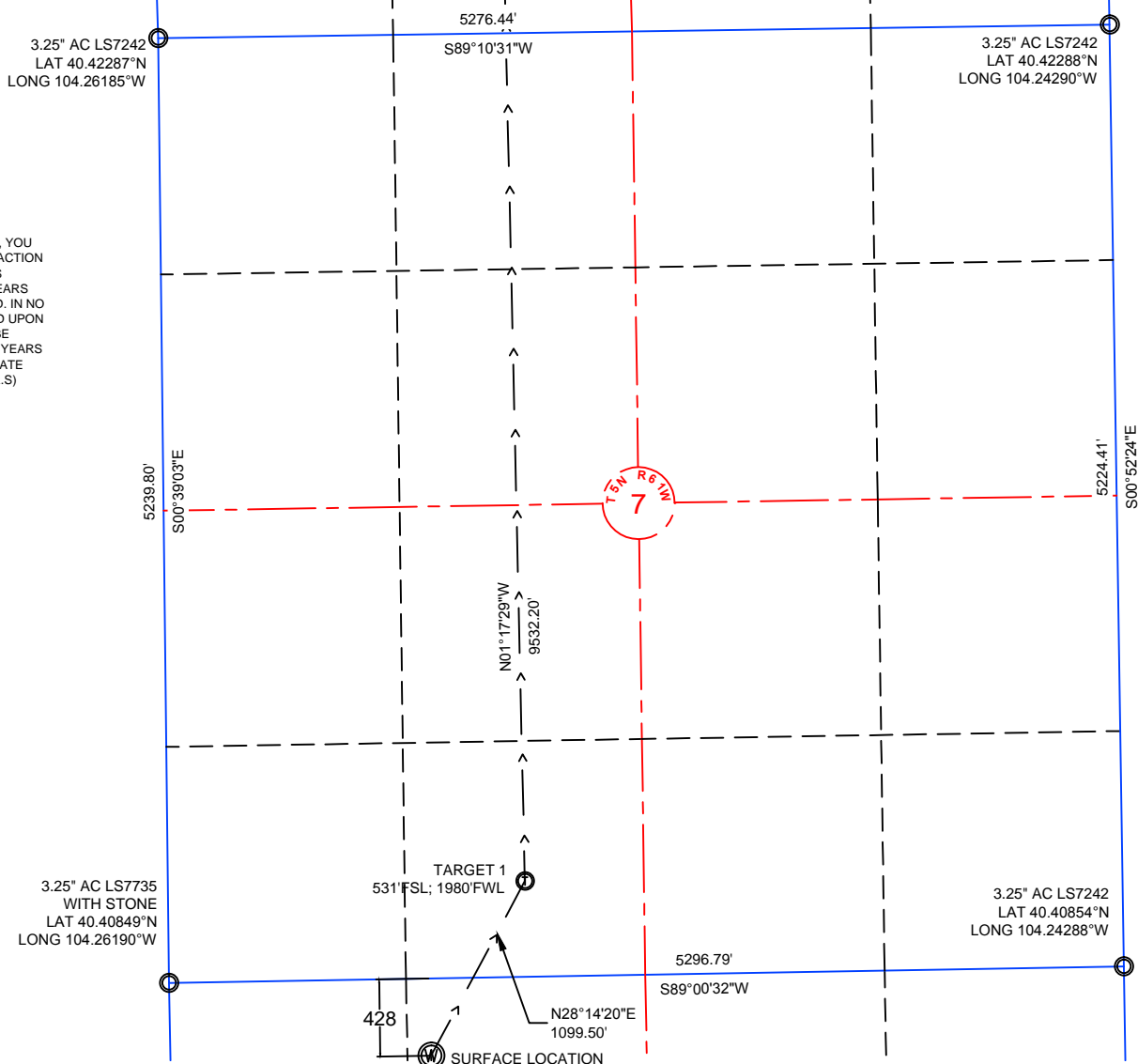
SHEET

1

OF

3

NOTE: UNDER COLORADO LAW, YOU MUST COMMENCE ANY LEGAL ACTION BASED ON ANY DEFECT IN THIS CERTIFICATE WITHIN THREE YEARS AFTER DEFECT IS DISCOVERED. IN NO EVENT MAY ANY ACTION BASED UPON ANY DEFECT IN THIS SURVEY BE COMMENCED MORE THAN TEN YEARS AFTER DATE OF THIS CERTIFICATE SHOWN HEREON. (13-80105 C.R.S.)



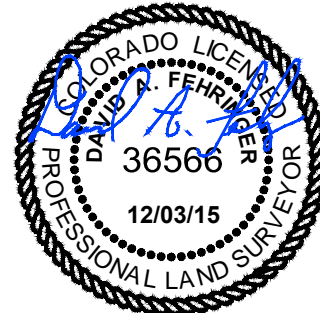
NOTES:

- ALL BEARINGS ARE GRID BASED UPON THE COLORADO STATE PLANE COORDINATE SYSTEM, NORTH ZONE, NAD83(2011) DERIVED FROM POST-PROCESSED STATIC GPS OBSERVATIONS.
- DISTANCES ARE ON GRID
- VERTICAL DATUM IS NAVD88 BASED UPON GPS OBSERVATIONS
- PDOP VALUE EQUALS 1.6.
- GPS OPERATOR: MIKE JOHNSON.
- UNDISTURBED GROUND ELEVATION AT WELLHEAD = 4565'
- ALL SECTION LENGTHS ARE MEASURED DISTANCES UNLESS NOTED BY (R), RECORD BEARING AND DISTANCE.
- NEAREST CULTURAL DISTANCES
 - BUILDINGS: 5280' +/-
 - BUILDING UNIT: 5280' +/-
 - HIGH OCCUPANCY BUILDING UNIT: 5280'+
 - DESIGNATED OUTSIDE ACTIVITY AREA: 5280'+
 - PUBLIC ROAD: 421'+
 - ABOVE GROUND UTILITY: 401' +/-
 - RAILROAD: 5280'+
 - PROPERTY LINE: 1445' +/-

5			STATE PLANE COORDINATES	
24-7-6XRLNB	LATITUDE	LONGITUDE	NORTHING	EASTING
SURFACE	40.40733	104.25670	1393657.89	3346222.59
TARGET 1	40.40997	104.25479	1394626.53'	3346742.82'
BOTTOM HOLE	40.43613	104.25508	1404156.31'	3346528.00'

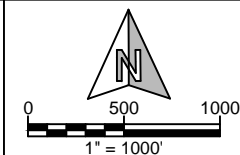
CERTIFICATE OF SURVEYOR:

I, DAVID A. FEHRINGER OF LANDER, WYOMING HEREBY CERTIFY THAT THIS WELL LOCATION CERTIFICATE WAS PREPARED FROM NOTES TAKEN DURING AN ACTUAL SURVEY ON DECEMBER 15, 2015; AND THAT IT CORRECTLY SHOWS THE DRILLING LOCATION OF BONANZA CREEK ENERGY, INC., PRONGHORN 24-7-6XRLNB AS STAKED DURING SAID SURVEY. THIS MAP DOES NOT REPRESENT A BOUNDARY SURVEY OR AN IMPROVEMENT LOCATION PLAT AND SHOULD NOT BE USED FOR THE ESTABLISHMENT OF BOUNDARY LINES.



WILLIAM H. SMITH & ASSOCIATES, Inc.
155 N. 1st Street
Lander, WY 82520
Phone: 307-335-5646

Drawn By: MAM
Job No.:
Revision: 1 Change Surface Locations 12-02-15



IF BAR LENGTH DOES NOT EQUAL 1" (ONE INCH), THIS PAGE WAS NOT PLOTTED TO THE INTENDED SCALE.

LOCATION CERTIFICATE

PRONGHORN
24-7-6XRLNB
SECTION 7 BORE
NE 1/4 NW 1/4, SECTION 18,
T.5N., R.61W., 6th PM
WELD COUNTY, COLORADO



410 17th Street
Denver, CO 80202
(720) 440-6100

SHEET

2

OF

3

3