



part of Baker Hughes. Unless other contract terms have been agreed to by the parties, each party's liabilities and qdnkicvkqpu"ujcnn"dg"iqxgtpgf"d{"Dcmgt"JwiJgu"Kpeqtrqtctvgfðu"Yqtnfykfg"Vgtou"cpf"Eqpfkvkqpu0\$""

Log Run Summary

Run No	Bit Run No.	Bit Size (in)	Bit Type	Bit Gauge Length (in)	Assembly Type	Logged Interval		Bit Depth Interval		Date / Time		Circ. Hours (h)
						Top	Bottom	From	To	Start Logging	End Logging	
						(ft)	(ft)	(ft)	(ft)			
1	1	8.500	PDC	2.00	AutoTrak Curve	1852.83	16072.99	1865.00	16079.54	2016-01-29 05:30	2016-02-01 04:11	62.33

Crew

Name		Arrive Wellsite	Depart Wellsite	Name		Arrive Wellsite	Depart Wellsite	Name		Arrive Wellsite	Depart Wellsite
David Browning		2016-01-28	2016-02-01	Mike Gurnsey		2016-01-28	2016-02-01	Nick Williams		2016-01-28	2016-02-01
Will Drake		2016-01-28	2016-02-01								

Mud Properties Record

Date / Time		Run No.	Measured Depth (ft)	Mud Type	Density (ppg)	Viscosity (cP)	pH	Fluid Loss (cm3)	Oil / Water	Source	Total Chlorides (ppm)	K+ (%)
2016-01-28 23:29		1	1865.00	Water Based Mud	9.0	31	N/A	0.0	2.0 / 95.0	Active Pit	44000	0.00
2016-01-29 04:00		1	4431.00	Oil Based Mud	9.8	87	N/A	0.0	60.0 / 27.0	Active Pit	0	0.00
2016-01-31 04:00		1	9084.00	Oil Based Mud	9.6	56	N/A	0.0	60.5 / 28.0	Active Pit	0	0.00
2016-01-30 04:00		1	14084.00	Oil Based Mud	9.5	52	N/A	0.0	61.0 / 26.5	Active Pit	0	0.00
2016-02-01 04:00		1	16079.00	Oil Based Mud	9.9	60	N/A	0.0	59.0 / 26.0	Active Pit	0	0.00

Equipment and Service Data

Run No.	Tool		Serial Number	Measurement	Sensor Offset (ft)	Bit Offset (ft)	Max O.D. (in)	Min I.D. (in)
1	ATC_SU		12406995	Near Bit Inclination	5.93	6.55	7.000	4.330
1	ATC_SU		12406995	Near Bit VSS	5.93	6.55	7.000	4.330
1	ATC_MWD		11993917	Gamma (single)	2.19	12.17	7.000	3.250
1	ATC_MWD		11993917	Directional (mag)	12.26	22.24	7.000	3.250

Service and Tool Mnemonics

Mnemonic	Name	Description
ATC_SU	ATC_SU	Auto Trak Curve Steering Unit
ATC_MWD	ATC_MWD	Auto Trak Curve MWD
ATC_LCPM	ATC_LCPM	Auto Trak Curve LCPM

Comments


- 1 Baker Hughes Run 1 utilized a 6 3/4 inch AutoTrak Curve (Rotary Steerable, Directional and Gamma Ray) tool behind an 8 1/2 inch bit and rotary steerable assembly from 1865.0 ft. MD (1864.3 ft. TVD) to 16079.0 ft. MD (6449.2 ft. TVD).
- 2 Depth measurements were obtained from a depth control system not supplied or operated by Baker Hughes. Due to lack of control by Baker Hughes logging engineers, depth calibrations and measurements could not be independently verified and the unverified depths as supplied to Baker Hughes are being used to represent logging data.
- 3 Inconsistent gamma data density is due to downlinking to the rotary steerable while drilling ahead, additional rotary steerable data transmitted and utilizing bandwidth while coupled with high ROP.

Remarks

Number	Measured Depth (ft)	Hole Section (in)	Run No.	Remark
1	1860.00	8.500	1	As per customer request, Gamma logging was initiated at 1865.0 ft. MD (1865.5 ft. TVD).
2	1860.00	8.500	1	Interval from 1852.0 to 1859.0 ft. MD (1852.5 to 1859.6 ft. TVD) GRAM is present due to testing of BHA, a bit to Gamma Ray sensor offset is present in the interval from 1865.0 to 1878.0 (1865.5 to 1878.6 ft. TVD).
3	1890.00	8.500	1	Due to the lack of communication with the third-party logging system, the WOBA in the interval from 1865.0 to 8023.0 ft. MD (1865.9 to 8463.52 ft. TVD) lacks WOBA values.
4	9590.00	8.500	1	Interval from 9592.0 to 9613.0 ft. MD (6466.3 to 6466.5 ft. TVD) GRAM is not present due to communication with 3rd party logging services. WOBA is not present in the interval from 9592.0 to 9910.0 (6466.3 to 6466.4 ft. TVD).

Curve Mnemonics

Presented Curves	Description	Units
ROPA	Depth Averaged ROP 3 ft Average	ft/h
GRAM	Gamma Ray - Apparent 3 ft Average	API
TCDM	Downhole Temperature	degF
WOBA	Weight On Bit, Average 1 ft Average	klb



Company

Well

Interval

Created

Noble Energy

Wells Ranch AF05-665

Date From:

2016-01-29 05:30

Top:

1853.00

Date To:

2016-01-30 15:28

Bottom:

6467.00

2016-02-02

04:19

Gamma Ray - Apparent 3 ft Average GRAM

0150

API

TVD 1:1200 feet

Rate of Penetration 3 ft Average ROPA

1000ft/h0

Surface Weight On Bit 1 ft Average WOBA

0100

klb

Downhole Temperature TCDM

0300

degF

> R1

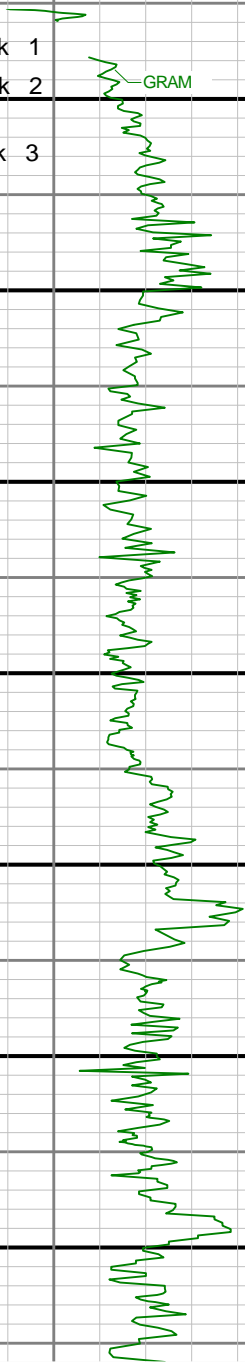
1800 1900 2000 2100 2200 2300 2400 2500

ROPA

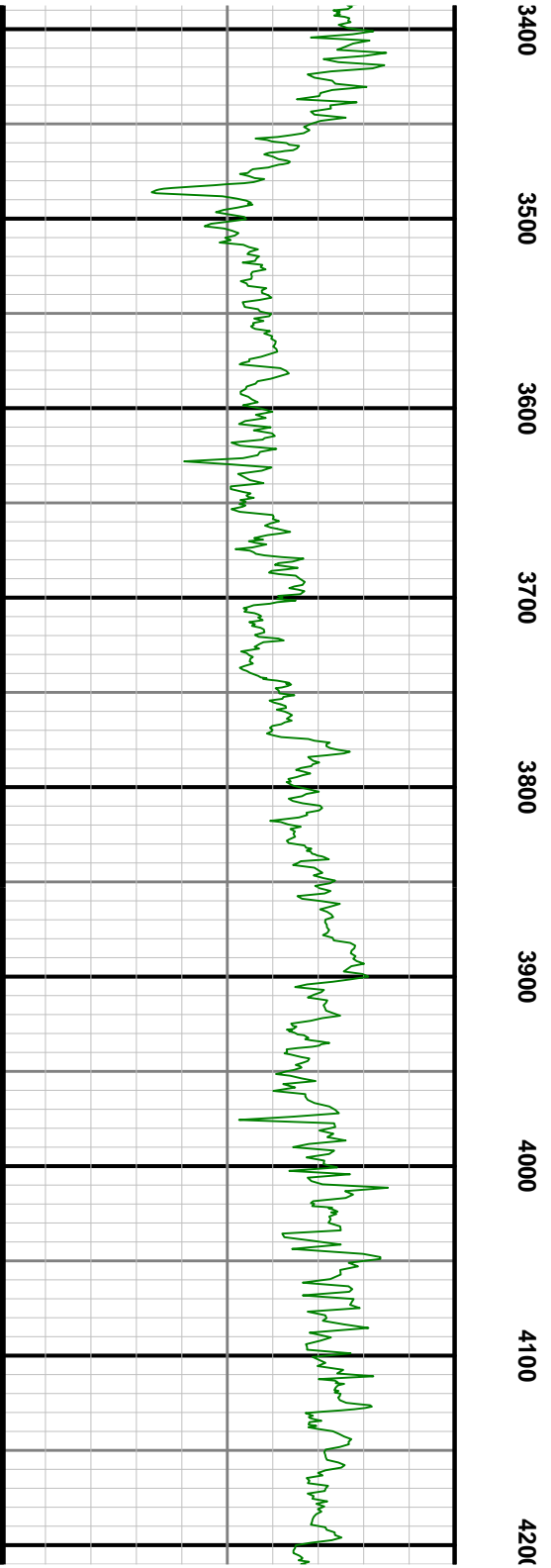
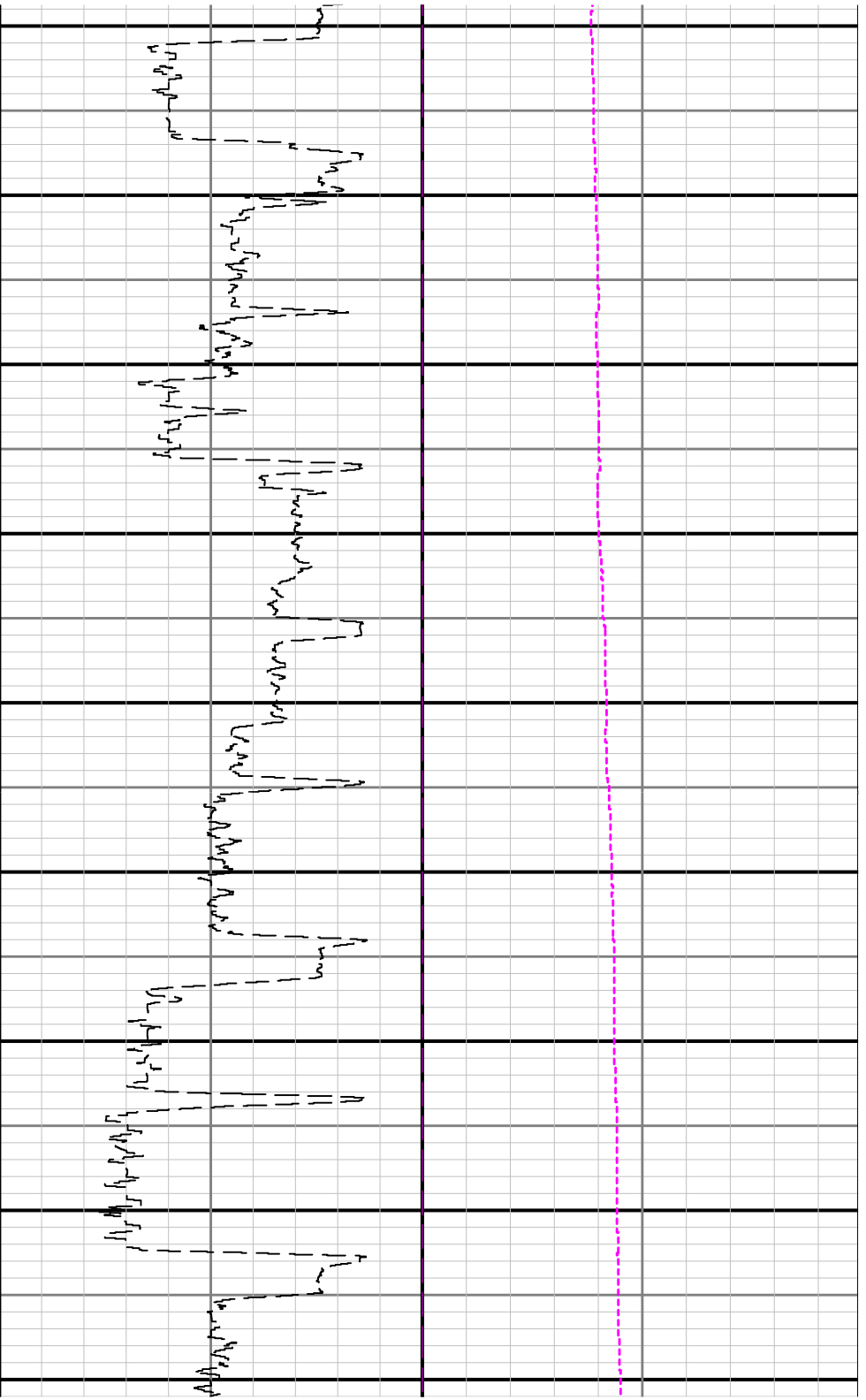
TCDM

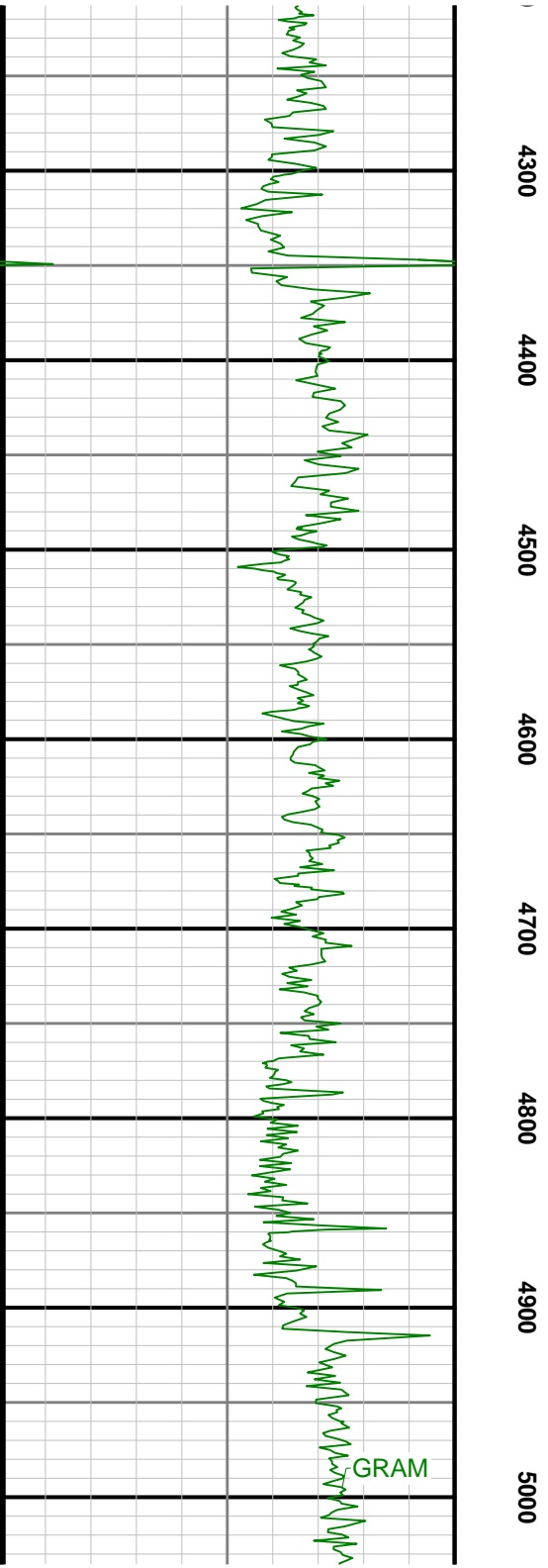
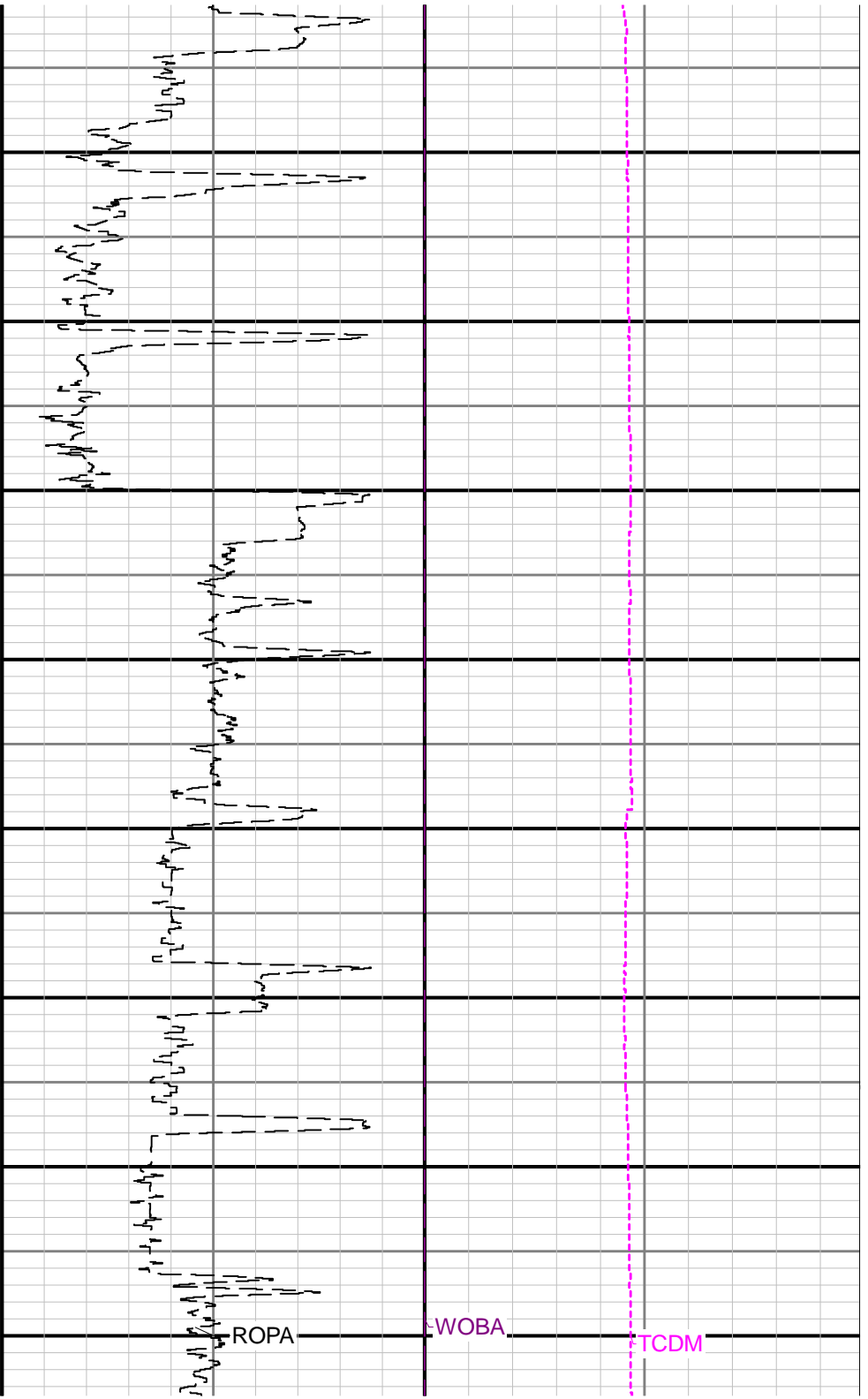
See Remark 1  
See Remark 2  
See Remark 3

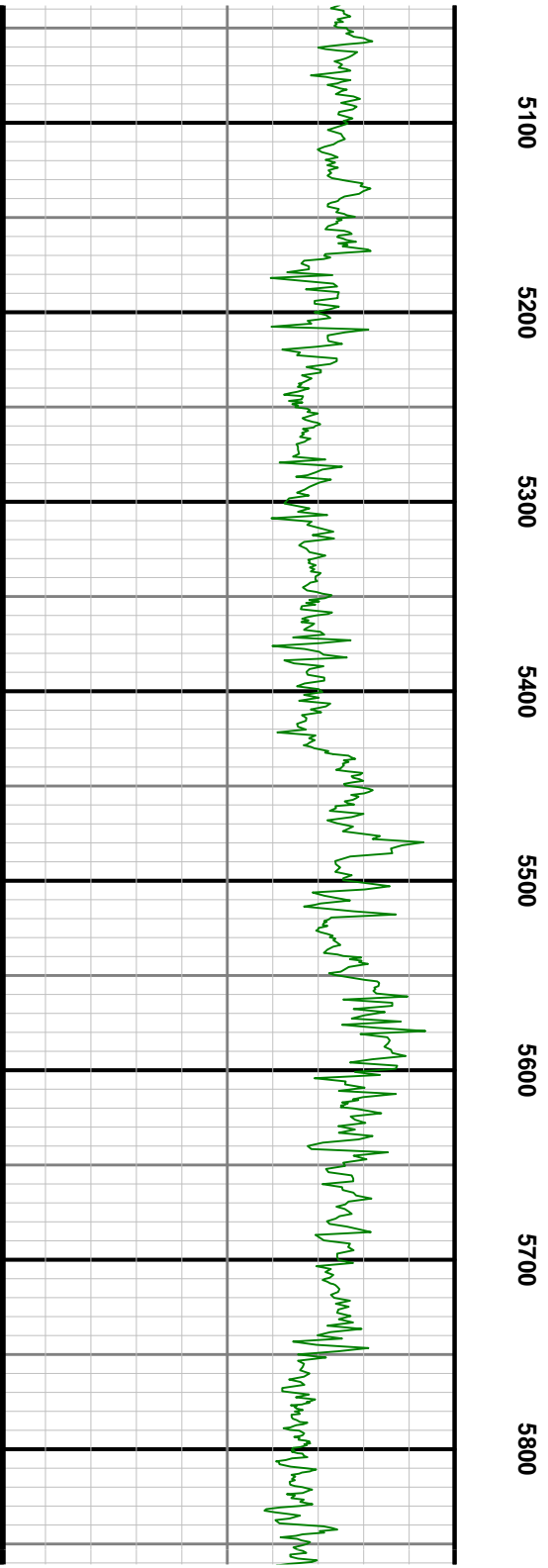
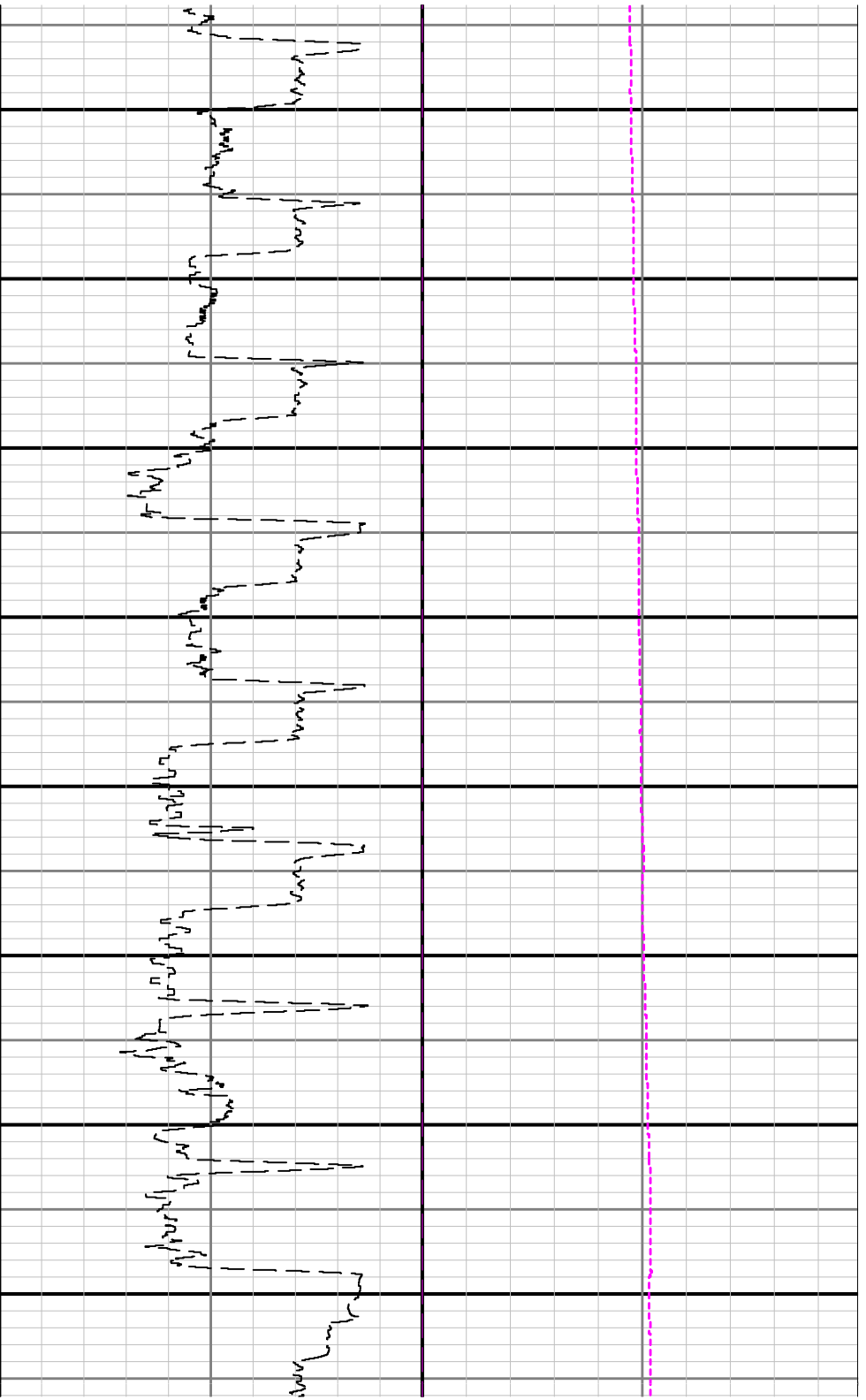
GRAM



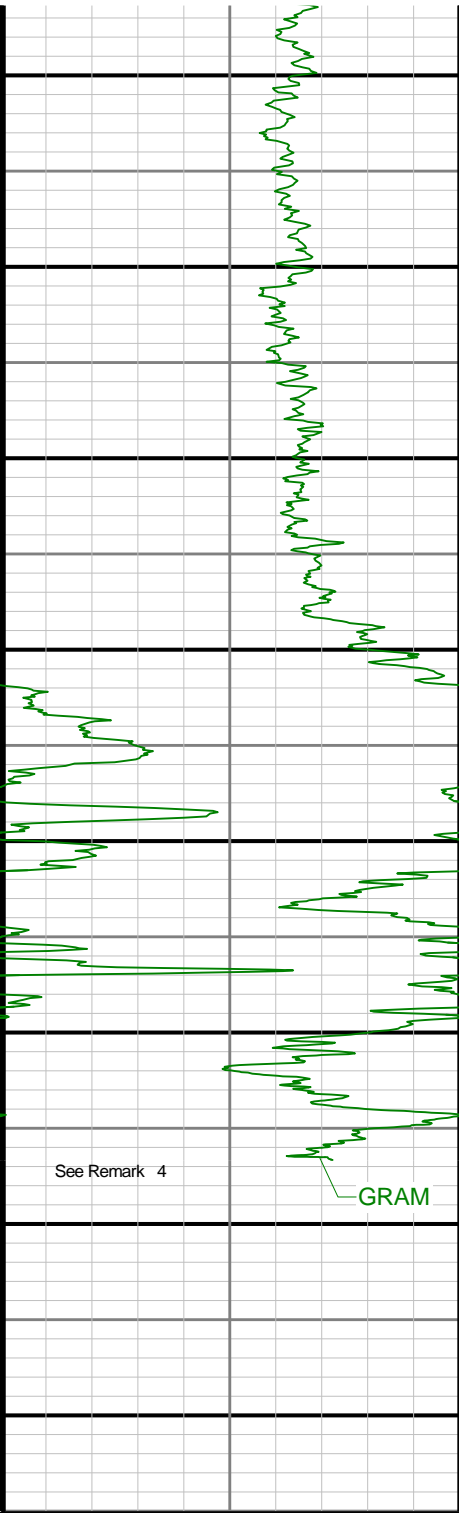




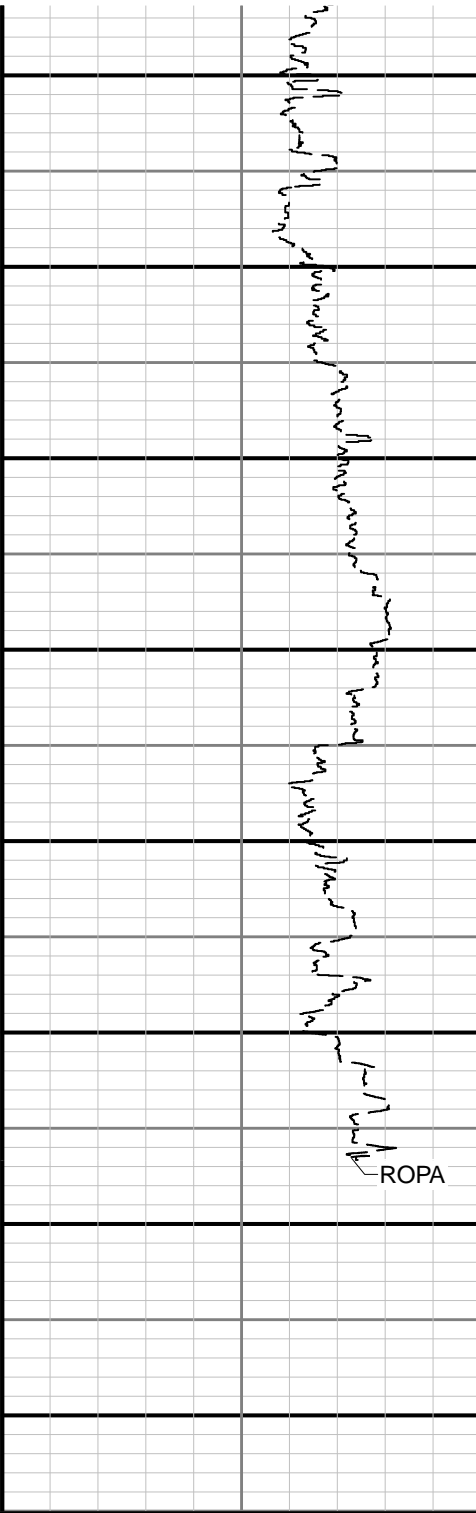








5900 6000 6100 6200 6300 6400 6500 6600



Gamma Ray - Apparent 3 ft Average GRAM  
0 150

TVD

Rate of Penetration 3 ft Average ROPA  
1000 0

Surface Weight On Bit 1 ft Average WOBA  
0 100

API	1:1200 feet	ft/h	kib	
			Downhole Temperature TCDM	
			0	300
			degF	

## Directional Survey Summary

Latitude: 30° 00' 00" N	Longitude: 105° 00' 00" W
North Reference: Grid	Drill Depth Zero: Rig Floor
Vertical Datum is: Ground Level	Vertical Datum to DDZ: (ft) 30.00
Vertical Section North: (m) 9906.28	Vertical Section East: (m) 791.67
Vertical Section Azimuth: (deg) 85.36	
Grid Convergence: (deg) 0.74	Magnetic Declination: (deg) 8.27
Total Correction: (deg) 8.27	TVD Calculation Method: Minimum Curvature
Magnetic Correction: 7.53	Local Magnetic Field: (nT) 52637
Local Magnetic Dip Angle: (deg) 67.05	Local Gravity Field: (m/s2) 9.801

Tie-In / Projection	Measured Depth (ft)	Inclination (deg)	Azimuth (deg)	Temperature (degF)	North (ft)	East (ft)	True Vertical Depth (ft)	Vertical Section (ft)	Course Length (ft)	Dog Leg Severity (deg/100ft)	Build Rate (deg/100ft)	Turn Rate (deg/100ft)
Tie-In	0.00	0.00	0.00	106.0	0.00	0.00	0.00	0.00	0.00	0.00	0.00	0.00
	1848.00	0.32	180.64	106.0	-2.13	-3.49	1847.97	-3.65	1848.00	0.22	-0.19	18.43
	1945.00	0.09	191.87	106.0	-2.48	-3.51	1944.97	-3.70	97.00	0.24	-0.24	11.58
	2135.00	0.18	134.51	87.8	-2.83	-3.33	2134.97	-3.55	190.00	0.08	0.05	-30.19
	2229.00	1.46	27.90	96.0	-1.88	-2.66	2228.96	-2.81	94.00	1.62	1.36	-113.41
	2324.00	4.02	7.25	98.7	2.50	-1.68	2323.84	-1.47	95.00	2.85	2.69	-21.74
	2419.00	6.98	1.56	93.2	11.57	-1.10	2418.40	-0.16	95.00	3.16	3.12	-5.99
	2513.00	8.73	1.81	104.1	24.41	-0.72	2511.51	1.26	94.00	1.86	1.86	0.27
	2608.00	8.81	5.43	104.1	38.86	0.20	2605.40	3.34	95.00	0.59	0.08	3.81
	2703.00	8.72	9.16	106.8	53.21	2.03	2699.29	6.33	95.00	0.61	-0.09	3.93
	2798.00	8.99	7.11	106.8	67.69	4.10	2793.16	9.56	95.00	0.44	0.28	-2.16
	2892.00	8.98	4.39	109.5	82.29	5.57	2886.01	12.21	94.00	0.45	-0.01	-2.89
	2987.00	8.59	5.16	109.5	96.75	6.77	2979.89	14.58	95.00	0.43	-0.41	0.81
	3082.00	8.59	17.34	112.2	110.59	9.53	3073.83	18.44	95.00	1.91	0.00	12.82
	3177.00	8.56	24.34	114.9	123.80	14.55	3167.77	24.52	95.00	1.10	-0.03	7.37
	3271.00	8.73	31.77	114.9	136.24	21.19	3260.71	32.15	94.00	1.20	0.18	7.90
	3366.00	8.76	22.56	114.9	149.05	27.77	3354.61	39.73	95.00	1.47	0.03	-9.69
	3461.00	11.84	22.67	117.6	164.73	34.30	3448.07	47.51	95.00	3.24	3.24	0.12
	3555.00	9.73	0.72	120.3	181.58	38.12	3540.44	52.68	94.00	4.87	-2.24	-23.35
	3650.00	8.85	328.73	117.6	195.86	34.42	3634.26	50.15	95.00	5.44	-0.93	-33.67
	3745.00	8.90	337.27	123.0	208.89	27.79	3728.12	44.60	95.00	1.39	0.05	8.99
	3839.00	8.68	349.32	125.7	222.56	23.67	3821.03	41.59	94.00	1.97	-0.23	12.82
	3934.00	8.85	357.56	131.1	236.91	22.03	3914.92	41.12	95.00	1.33	0.18	8.67
	4028.00	9.28	6.12	131.1	251.67	22.53	4007.75	42.81	94.00	1.50	0.46	9.11
	4123.00	9.12	15.57	133.8	266.54	25.36	4101.53	46.84	95.00	1.60	-0.17	9.95
	4218.00	9.34	17.41	133.8	281.15	29.69	4195.30	52.34	95.00	0.39	0.23	1.94
	4312.00	9.29	14.05	139.2	295.79	33.82	4288.07	57.63	94.00	0.58	-0.05	-3.57
	4407.00	8.99	12.33	139.2	310.48	37.26	4381.86	62.26	95.00	0.43	-0.32	-1.81
	4502.00	9.23	21.76	141.9	324.81	41.67	4475.67	67.81	95.00	1.59	0.25	9.93
	4596.00	9.44	18.11	139.2	339.13	46.86	4568.42	74.14	94.00	0.67	0.22	-3.88
	4690.00	9.30	5.96	139.2	354.02	50.05	4661.18	78.52	94.00	2.11	-0.15	-12.93
	4785.00	9.27	7.78	136.5	369.23	51.88	4754.93	81.58	95.00	0.31	-0.03	1.92
	4880.00	9.25	7.81	139.2	384.38	53.95	4848.69	84.87	95.00	0.02	-0.02	0.03
	4974.00	8.93	8.42	141.9	399.08	56.05	4941.51	88.15	94.00	0.36	-0.34	0.65
	5069.00	9.10	13.99	141.9	413.66	58.94	5035.34	92.21	95.00	0.94	0.18	5.86

	5163.00	7.95	4.99	141.9	427.35	61.31	5128.31	95.68	94.00	1.87	-1.22	-9.57
	5258.00	6.88	359.49	144.6	439.59	61.83	5222.51	97.19	95.00	1.35	-1.13	-5.79
	5352.00	4.14	359.61	144.6	448.61	61.75	5316.07	97.84	94.00	2.91	-2.91	0.13
	5447.00	2.89	347.01	147.3	454.38	61.19	5410.89	97.75	95.00	1.54	-1.32	-13.26
	5542.00	1.26	311.90	150.0	457.41	59.88	5505.83	96.68	95.00	2.10	-1.72	-36.96
	5636.00	0.31	174.89	328.4	457.85	59.13	5599.82	95.97	94.00	1.60	-1.01	-145.76
	5731.00	0.11	58.73	152.7	457.64	59.23	5694.82	96.06	95.00	0.39	-0.21	-122.27
	5825.00	0.84	75.31	155.4	457.86	59.98	5788.82	96.82	94.00	0.78	0.78	17.64
	5920.00	10.92	63.09	331.1	462.12	68.70	5883.19	105.85	95.00	10.63	10.61	-12.86
	6015.00	16.52	78.16	158.1	468.97	89.96	5975.48	127.60	95.00	6.95	5.89	15.86
	6109.00	21.73	90.45	160.8	471.58	120.48	6064.29	158.23	94.00	6.98	5.54	13.07
	6204.00	29.19	94.56	160.8	469.60	161.21	6150.01	198.67	95.00	8.07	7.85	4.33
	6299.00	39.05	91.27	163.5	467.08	214.36	6228.57	251.44	95.00	10.56	10.38	-3.46
	6393.00	47.26	92.76	166.2	464.76	278.55	6297.09	315.24	94.00	8.80	8.73	1.59
	6488.00	55.66	91.44	168.9	462.09	352.74	6356.23	388.97	95.00	8.91	8.84	-1.39
	6583.00	62.81	90.43	166.2	460.79	434.31	6404.79	470.16	95.00	7.58	7.53	-1.06
	6678.00	71.85	91.99	168.9	458.90	521.85	6441.37	557.27	95.00	9.64	9.52	1.64
	6773.00	83.99	92.18	168.9	455.52	614.52	6461.21	649.35	95.00	12.78	12.78	0.20
	6867.00	90.15	88.40	174.3	455.06	708.33	6466.02	742.82	94.00	7.68	6.55	-4.02
	6962.00	89.94	86.26	174.3	459.48	803.22	6465.94	837.76	95.00	2.26	-0.22	-2.25
	7057.00	90.06	87.37	177.0	464.76	898.07	6465.94	932.73	95.00	1.18	0.13	1.17
	7151.00	89.91	89.09	179.7	467.66	992.02	6465.97	1026.60	94.00	1.84	-0.16	1.83
	7246.00	90.80	90.69	182.5	467.84	1087.02	6465.38	1121.30	95.00	1.93	0.94	1.68
	7340.00	90.65	88.93	182.5	468.16	1181.01	6464.19	1215.01	94.00	1.88	-0.16	-1.87
	7435.00	90.62	87.76	182.5	470.90	1275.96	6463.14	1309.87	95.00	1.23	-0.03	-1.23
	7529.00	89.78	82.85	177.0	478.59	1369.61	6462.81	1403.84	94.00	5.30	-0.89	-5.22
	7624.00	90.34	83.33	177.0	490.02	1463.92	6462.71	1498.76	95.00	0.78	0.59	0.51
	7719.00	90.62	83.64	182.5	500.80	1558.31	6461.91	1593.71	95.00	0.44	0.29	0.33
	7814.00	90.18	85.43	185.2	509.85	1652.87	6461.25	1688.69	95.00	1.94	-0.46	1.88
	7908.00	89.08	85.39	187.9	517.37	1746.56	6461.86	1782.69	94.00	1.17	-1.17	-0.04
	8003.00	89.14	85.46	187.9	524.94	1841.25	6463.33	1877.68	95.00	0.10	0.06	0.07
	8098.00	90.15	85.52	187.9	532.41	1935.95	6463.92	1972.68	95.00	1.07	1.06	0.06
	8192.00	89.94	86.49	182.5	538.96	2029.72	6463.85	2066.67	94.00	1.06	-0.22	1.03
	8287.00	89.91	87.53	193.3	543.92	2124.59	6463.97	2161.63	95.00	1.10	-0.03	1.09
	8381.00	90.46	89.04	196.0	546.73	2218.55	6463.67	2255.50	94.00	1.71	0.59	1.61
	8476.00	89.51	89.30	198.7	548.11	2313.53	6463.69	2350.29	95.00	1.04	-1.00	0.27
	8571.00	90.62	92.35	198.7	546.74	2408.51	6463.58	2444.85	95.00	3.42	1.17	3.21
	8665.00	89.32	91.62	198.7	543.48	2502.45	6463.63	2538.22	94.00	1.59	-1.38	-0.78
	8760.00	89.75	90.04	198.7	542.11	2597.44	6464.41	2632.78	95.00	1.72	0.45	-1.66
	8854.00	89.35	87.18	201.4	544.39	2691.40	6465.14	2726.61	94.00	3.07	-0.43	-3.04
	8949.00	89.32	87.24	198.7	549.01	2786.28	6466.25	2821.56	95.00	0.07	-0.03	0.06
	9044.00	90.34	87.56	198.7	553.32	2881.18	6466.53	2916.50	95.00	1.13	1.07	0.34
	9139.00	90.09	87.57	201.4	557.36	2976.09	6466.17	3011.42	95.00	0.26	-0.26	0.01
	9233.00	89.97	86.81	201.4	561.97	3069.98	6466.12	3105.38	94.00	0.82	-0.13	-0.81
	9328.00	89.82	87.10	206.8	567.01	3164.84	6466.30	3200.34	95.00	0.34	-0.16	0.31
	9422.00	89.97	87.63	206.8	571.33	3258.74	6466.47	3294.28	94.00	0.59	0.16	0.56
	9517.00	90.09	89.29	206.0	573.89	3353.70	6466.42	3389.14	95.00	1.75	0.13	1.75
	9612.00	90.00	89.45	198.7	574.93	3448.70	6466.34	3483.91	95.00	0.19	-0.09	0.17
	9707.00	90.06	86.87	201.4	577.98	3543.64	6466.29	3578.78	95.00	2.72	0.06	-2.72
	9802.00	89.94	87.61	201.4	582.56	3638.53	6466.29	3673.73	95.00	0.79	-0.13	0.78
	9896.00	90.00	86.81	204.1	587.13	3732.42	6466.34	3767.68	94.00	0.85	0.06	-0.85
	9991.00	89.94	84.64	206.8	594.21	3827.15	6466.39	3862.67	95.00	2.29	-0.06	-2.28
	10085.00	89.91	85.84	209.5	602.01	3920.82	6466.52	3956.67	94.00	1.28	-0.03	1.28
	10180.00	90.06	85.20	212.2	609.43	4015.53	6466.54	4051.67	95.00	0.69	0.16	-0.67
	10274.00	90.92	86.45	212.2	616.28	4109.28	6465.74	4145.66	94.00	1.61	0.91	1.33

	10369.00	90.43	85.99	212.2	622.54	4204.06	6464.62	4240.64	95.00	0.71	-0.52	-0.48
	10464.00	90.40	86.28	214.9	628.94	4298.84	6463.93	4335.63	95.00	0.31	-0.03	0.31
	10558.00	90.52	87.83	214.9	633.77	4392.71	6463.18	4429.59	94.00	1.65	0.13	1.65
	10653.00	90.46	89.06	214.9	636.35	4487.67	6462.36	4524.44	95.00	1.30	-0.06	1.29
	10748.00	90.58	89.56	214.9	637.49	4582.66	6461.50	4619.21	95.00	0.54	0.13	0.53
	10842.00	90.46	89.00	217.6	638.67	4676.65	6460.65	4712.99	94.00	0.61	-0.13	-0.60
	10937.00	90.34	86.39	217.6	642.49	4771.56	6459.98	4807.90	95.00	2.75	-0.13	-2.75
	11032.00	90.43	86.01	217.6	648.79	4866.35	6459.35	4902.89	95.00	0.41	0.09	-0.40
	11126.00	90.59	88.27	217.6	653.48	4960.23	6458.51	4996.83	94.00	2.41	0.17	2.40
	11221.00	90.65	90.01	220.3	654.91	5055.21	6457.48	5091.62	95.00	1.83	0.06	1.83
	11316.00	90.62	89.69	220.3	655.15	5150.20	6456.43	5186.32	95.00	0.34	-0.03	-0.34
	11411.00	90.22	87.29	223.0	657.66	5245.16	6455.73	5281.17	95.00	2.56	-0.42	-2.53
	11505.00	90.22	86.35	223.0	662.87	5339.01	6455.37	5375.13	94.00	1.00	0.00	-1.00
	11600.00	90.22	85.92	223.0	669.28	5433.79	6455.01	5470.13	95.00	0.45	0.00	-0.45
	11695.00	90.25	90.13	223.0	672.55	5528.71	6454.62	5565.00	95.00	4.43	0.03	4.43
	11789.00	90.34	90.34	225.7	672.16	5622.71	6454.13	5658.66	94.00	0.24	0.10	0.22
	11884.00	90.37	92.70	225.7	669.64	5717.67	6453.54	5753.10	95.00	2.48	0.03	2.48
	11979.00	90.40	91.83	225.7	665.89	5812.59	6452.91	5847.41	95.00	0.92	0.03	-0.92
	12073.00	90.31	90.43	225.7	664.04	5906.57	6452.32	5940.93	94.00	1.49	-0.10	-1.49
	12168.00	90.22	90.30	228.4	663.43	6001.57	6451.88	6035.57	95.00	0.17	-0.09	-0.14
	12262.00	90.18	89.15	228.4	663.88	6095.56	6451.56	6129.29	94.00	1.22	-0.04	-1.22
	12357.00	90.28	87.13	228.4	666.96	6190.51	6451.17	6224.17	95.00	2.13	0.11	-2.13
	12452.00	90.28	85.28	231.1	673.25	6285.29	6450.71	6319.16	95.00	1.95	0.00	-1.95
	12546.00	90.31	86.31	231.1	680.14	6379.04	6450.23	6413.15	94.00	1.10	0.03	1.10
	12641.00	90.00	88.85	231.1	684.16	6473.95	6449.97	6508.07	95.00	2.69	-0.33	2.67
	12735.00	90.00	89.74	231.1	685.31	6567.94	6449.97	6601.85	94.00	0.95	0.00	0.95
	12830.00	89.88	89.14	231.1	686.24	6662.93	6450.07	6696.61	95.00	0.64	-0.13	-0.63
	12925.00	90.03	88.52	231.1	688.18	6757.91	6450.14	6791.44	95.00	0.67	0.16	-0.65
	13020.00	89.97	88.95	233.8	690.28	6852.89	6450.14	6886.27	95.00	0.46	-0.06	0.45
	13114.00	89.91	88.39	233.8	692.46	6946.86	6450.24	6980.11	94.00	0.60	-0.06	-0.60
	13209.00	90.00	88.58	228.4	694.97	7041.83	6450.32	7074.97	95.00	0.22	0.09	0.20
	13303.00	89.97	88.95	231.1	697.00	7135.81	6450.34	7168.81	94.00	0.39	-0.03	0.39
	13398.00	90.00	88.79	231.1	698.87	7230.79	6450.37	7263.63	95.00	0.17	0.03	-0.17
	13492.00	90.00	88.68	233.8	700.95	7324.77	6450.37	7357.46	94.00	0.12	0.00	-0.12
	13587.00	89.97	88.43	231.1	703.34	7419.74	6450.39	7452.32	95.00	0.27	-0.03	-0.26
	13681.00	90.00	84.72	231.1	708.96	7513.55	6450.41	7546.28	94.00	3.95	0.03	-3.95
	13775.00	89.88	82.19	117.6	719.67	7606.93	6450.51	7640.22	94.00	2.69	-0.13	-2.69
	13870.00	89.97	83.49	233.8	731.51	7701.19	6450.64	7735.13	95.00	1.37	0.09	1.37
	13965.00	89.85	85.10	233.8	740.95	7795.72	6450.79	7830.11	95.00	1.70	-0.13	1.69
	14059.00	89.94	85.60	236.5	748.57	7889.41	6450.96	7924.11	94.00	0.54	0.10	0.53
	14154.00	89.88	86.63	236.5	755.01	7984.19	6451.11	8019.10	95.00	1.09	-0.06	1.08
	14248.00	89.91	87.78	239.2	759.59	8078.07	6451.28	8113.04	94.00	1.22	0.03	1.22
	14343.00	89.88	88.14	241.9	762.98	8173.01	6451.45	8207.95	95.00	0.38	-0.03	0.38
	14438.00	89.94	88.93	241.9	765.40	8267.98	6451.60	8302.80	95.00	0.83	0.06	0.83
	14532.00	89.94	88.93	239.2	767.16	8361.96	6451.70	8396.62	94.00	0.00	0.00	0.00
	14627.00	89.91	88.89	241.9	768.97	8456.95	6451.83	8491.44	95.00	0.05	-0.03	-0.04
	14722.00	90.12	89.47	241.9	770.33	8551.94	6451.80	8586.22	95.00	0.65	0.22	0.61
	14816.00	89.97	95.17	241.9	766.52	8645.82	6451.73	8679.49	94.00	6.07	-0.16	6.06
	14911.00	90.09	95.29	239.2	757.86	8740.42	6451.68	8773.09	95.00	0.18	0.13	0.13
	15006.00	90.09	94.56	236.5	749.71	8835.07	6451.53	8866.76	95.00	0.77	0.00	-0.77
	15101.00	90.09	92.45	239.2	743.90	8929.89	6451.38	8960.80	95.00	2.22	0.00	-2.22
	15195.00	90.06	88.47	239.2	743.15	9023.87	6451.26	9054.41	94.00	4.23	-0.03	-4.23
	15290.00	90.03	88.37	241.9	745.77	9118.83	6451.18	9149.27	95.00	0.11	-0.03	-0.11
	15384.00	90.25	87.68	244.6	749.00	9212.78	6450.95	9243.17	94.00	0.77	0.23	-0.73
	15479.00	90.15	87.05	241.9	753.37	9307.67	6450.62	9338.11	95.00	0.67	-0.11	-0.66

	15573.00	90.09	86.83	244.6	758.39	9401.54	6450.42	9432.08	94.00	0.24	-0.06	-0.23
	15668.00	90.18	85.18	244.6	765.01	9496.30	6450.20	9527.07	95.00	1.74	0.09	-1.74
	15763.00	90.06	84.57	244.6	773.49	9590.92	6450.00	9622.06	95.00	0.65	-0.13	-0.64
	15858.00	90.12	85.26	244.6	781.91	9685.55	6449.85	9717.06	95.00	0.73	0.06	0.73
	15952.00	90.28	87.06	247.3	788.21	9779.33	6449.52	9811.05	94.00	1.92	0.17	1.91
	16047.00	90.06	89.26	247.3	791.26	9874.28	6449.24	9905.93	95.00	2.33	-0.23	2.32
Projection	16079.00	90.06	89.26	N/A	791.67	9906.28	6449.21	9937.85	32.00	0.00	0.00	0.00