

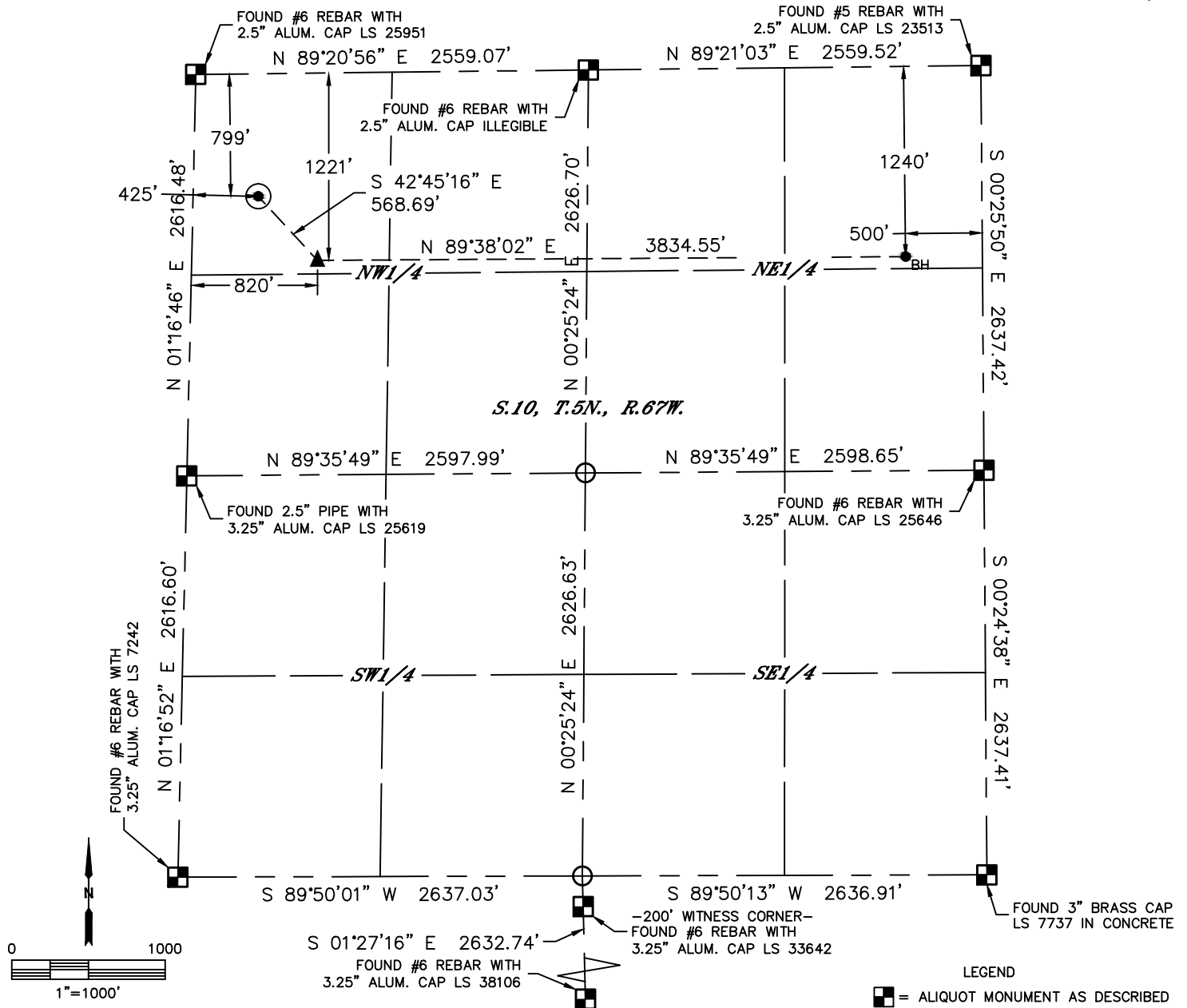


Lat40°, Inc. 6250 W. 10th Street, Unit 2, Greeley, CO 970-515-5294

WELL LOCATION CERTIFICATE

HIGH POINTE LLC 10F-202

SECTION: 10
TOWNSHIP: 5N
RANGE: 67W
6TH. P.M.
WELD COUNTY, CO



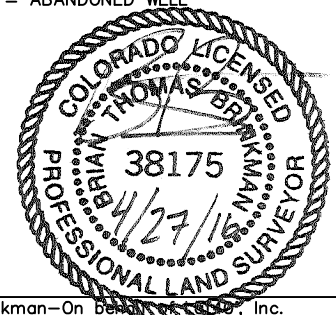
CLIENT: PDC ENERGY				LANDMAN: JEFF HINDMARSH		
INSTRUMENT OPERATOR: CASEY KOHOUT				SURVEY DATE: 11/18/2015	SURFACE USE: CROP LAND	
SHL FOOTAGE	SHL LAT °	SHL LONG °	SHL PDOP	SHL ELEV (FT.)	SHL 1/4/1/4	SHL S-T-R
799 FNL 425 FWL	40.41906	-104.88679	2.0	4924	NWNW	10-5-67

BHL FOOTAGE	BHL LAT °	BHL LONG °	BHL S-T-R	EP LAT °	EP LONG °	EP S-T-R
1240 FNL 500 FEL	40.41790	-104.87165	10-5-67	40.41791	-104.88542	10-5-67

NEAREST CULTURAL ITEMS	
BUILDING	±2010' NE
BUILDING UNIT	±2010' NE
HIGH OCCUPANCY BUILDING UNIT	5280'+
DESIGNATED OUTSIDE ACTIVITY AREA	5280'+
PUBLIC ROAD (131ST AVENUE)	±432' W
ABOVE GROUND UTILITY	±486' S
RAILROAD	±4774' NW
PROPERTY LINE	±425' W

NOTE:
1) Bearings shown are Grid Bearings of the Colorado State Plane Coordinate System, North Zone, North American Datum 1983. The lineal dimensions as contained herein are based upon the "U.S. Survey Foot."
2) Distances to section lines measured at 90 degrees from said section lines.
3) Ground elevations are based on an observed GPS elevation (NAVD 1988 DATUM).
4) Latitude and Longitude shown are (NAD 83 DATUM).
5) IMPROVEMENTS: See LOCATION DRAWING for all visible improvements within 500' of oil and gas location.
6) This map does not represent a boundary survey.

- LEGEND
- = ALIQUOT MONUMENT AS DESCRIBED
 - = CALCULATED POSITION
 - = SURFACE HOLE LOCATION (SHL)
 - ▲ = ENTRY POINT LOCATION (EP)
 - BH = BOTTOM HOLE LOCATION (BHL)
 - ⊕ = EXISTING WELL
 - ⊙ = ABANDONED WELL



Brian T. Brinkman—On Behalf of Lat40°, Inc.
Colorado Licensed Professional Land Surveyor No. 38175
DATE: 4/27/2016
PROJECT#: 2015119