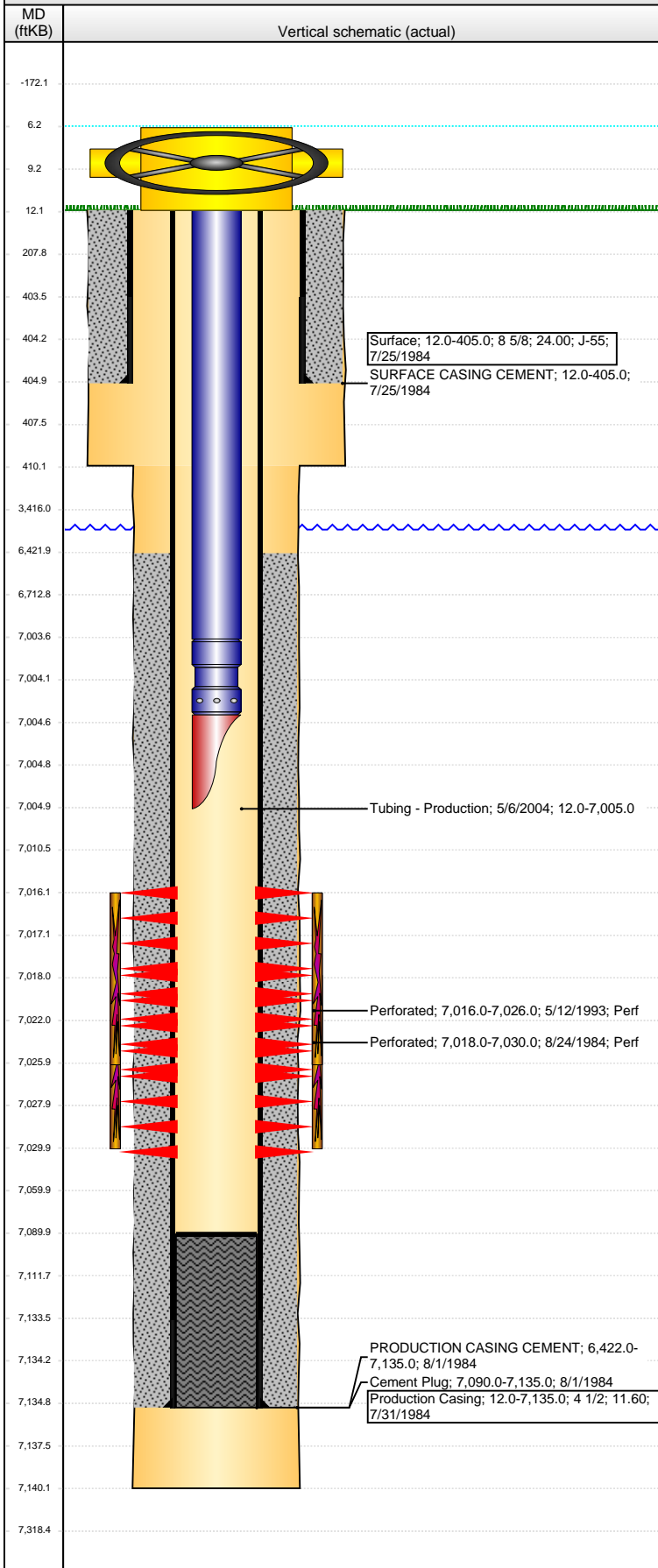


**Well Name: ROUKEMA 05-01**

VERTICAL - ORIGINAL HOLE, 5/6/2016 8:10:13 AM



Well Header					
API	Business Unit	District	Well Config		
05-123-11909	DJ BASIN	15	VERTICAL		
Original KB Elevation (ft)	KB - GL / MSL (ftKB)	Spud Date	P & A Date		
4,775	12.00	7/24/1984			
Comment					
Directions To Well					
Congressional Location					
Quarter 1	Quarter 2	Quarter 3	Quarter 4	Section	Township
	SW	SW	SW	5	4 N
Range 64 W					
Bottom Hole Location					
North-South Distance (ft)		From N or S Line		East-West Distance (ft)	
				From E or W Line	
Plug Back Total Depths					
Date	Depth (ftKB)	Method		Com	
8/1/1984	7,090.0	CASING TALLY			
Wellbore Sections					
Section Des		Size (in)	Act Top, MD (ftKB)		Act Btm, MD (ftKB)
SURFACE		12 1/4	12.0		410.0
PRODUCTION		7 7/8	410.0		7,140.0
Zone Statuses					
Zone Name	Status Date	Status	Fluid Type	Job	Prod Method
CODELL	9/6/1984	PR	Oil	DRILLING/CO...	
CODELL	6/10/1993	PR	Oil	RE-FRAC, 5/9/...	
CODELL	5/10/2004	PR	Oil	TRI-FRAC, 4/2...	
Casing Strings					
Surface, 405.0ftKB					
Casing Description	Run Date	OD (in)	Wt/Len (l...)	Grade	Top, MD (ft...)
Surface	7/25/1984	8 5/8	24.00	J-55	12.0
Production Casing, 7,135.0ftKB					
Casing Description	Run Date	OD (in)	Wt/Len (l...)	Grade	Top, MD (ft...)
Production Casing	7/31/1984	4 1/2	11.60		7,135.0
Cement					
Description	Top Depth (ftKB)			Bottom Depth (ftKB)	
SURFACE CASING CEMENT	12.0			405.0	
Description	Top Depth (ftKB)			Bottom Depth (ftKB)	
Cement Plug	7,090.0			7,135.0	
Description	Top Depth (ftKB)			Bottom Depth (ftKB)	
PRODUCTION CASING CEMENT	6,422.0			7,135.0	
Tubing Strings					
Tubing Description	Run Date	String...	ID (in)	Wt (lb/ft)	Grade
Tubing - Production	5/6/2004	2 3/8	1.995	4.70	J-55
Tubing Components					
Item Des	OD (in)	Wt (lb/ft)	Grade	Jts	Len (ft)
Tubing	2 3/8	4.70	J-55	215	6,991.50
Seat Nipple	2 3/8			1	1.00
Mule Shoe	2 3/8			1	0.50
Perforation Data					
Zone	Bnch/St g	Entered Shot Total	Top (ftKB)	Btm (ftKB)	Date
CODELL, ORIGINAL HOLE		40	7,016.00	7,026.00	5/12/1993
CODELL, ORIGINAL HOLE		24	7,018.00	7,030.00	8/24/1984
Stimulations & Treatments					
Date	Zone	Primary Job Type			
8/29/1984	CODELL, ORIGINAL HOLE	DRILLING/COMPLETION - ORIGINAL			
Technical Result		Tech Result Details		Tech Result Note	
Comment					
Date	Zone	Primary Job Type			
5/28/1993	CODELL, ORIGINAL HOLE	RE-FRAC			
Technical Result		Tech Result Details		Tech Result Note	
Comment					

**Well Name: ROUKEMA 05-01**

VERTICAL - ORIGINAL HOLE, 5/6/2016 8:10:16 AM

## Stimulations & Treatments

Date 5/4/2004	Zone CODELL, ORIGINAL HOLE	Primary Job Type TRI-FRAC
Technical Result	Tech Result Details	Tech Result Note
Comment		

## Other In Hole

Run Date	Des	OD (in)	Top (ftKB)	Btm (ftKB)

## Logs

Date	Type	Top, MD (ftKB)	Btm, MD (ftKB)
8/4/1984	CEMENT BOND	6,340.0	7,140.0

