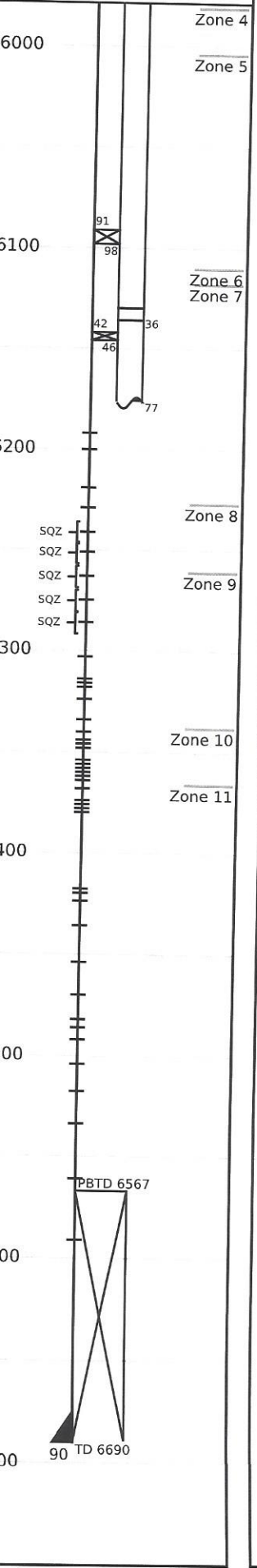


Well: A.C. McLaughlin 3AX (4338)  
Field: RWSU

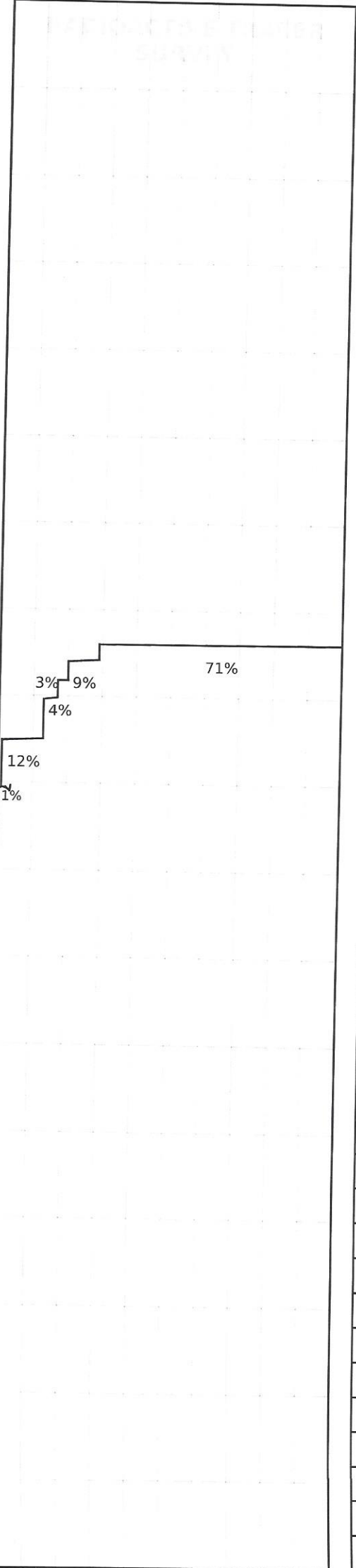
Run No.31		
Survey Type: T-S-T	Surface Temp: 116.6 °F	R/A Tracer indicates top perf and packer O.K. - Note: 04/12/2016 Ran 1.75" G.R. to 6569'. No problems.
Date: 04/19/2016	BHT: 146.5 °F	
Metered Rate: N/A	TBG Pressure: 1450 PSI	
Measured Rate: 2111 B/D	CSG Pressure: 0 PSI	
Desired Rate: N/A	Pick Up: 6555' TDL	
Service Co: PLS	Inj. Fluid: H <sub>2</sub> O	
		Recorded By: J.R. Hacking

Mechanical Information

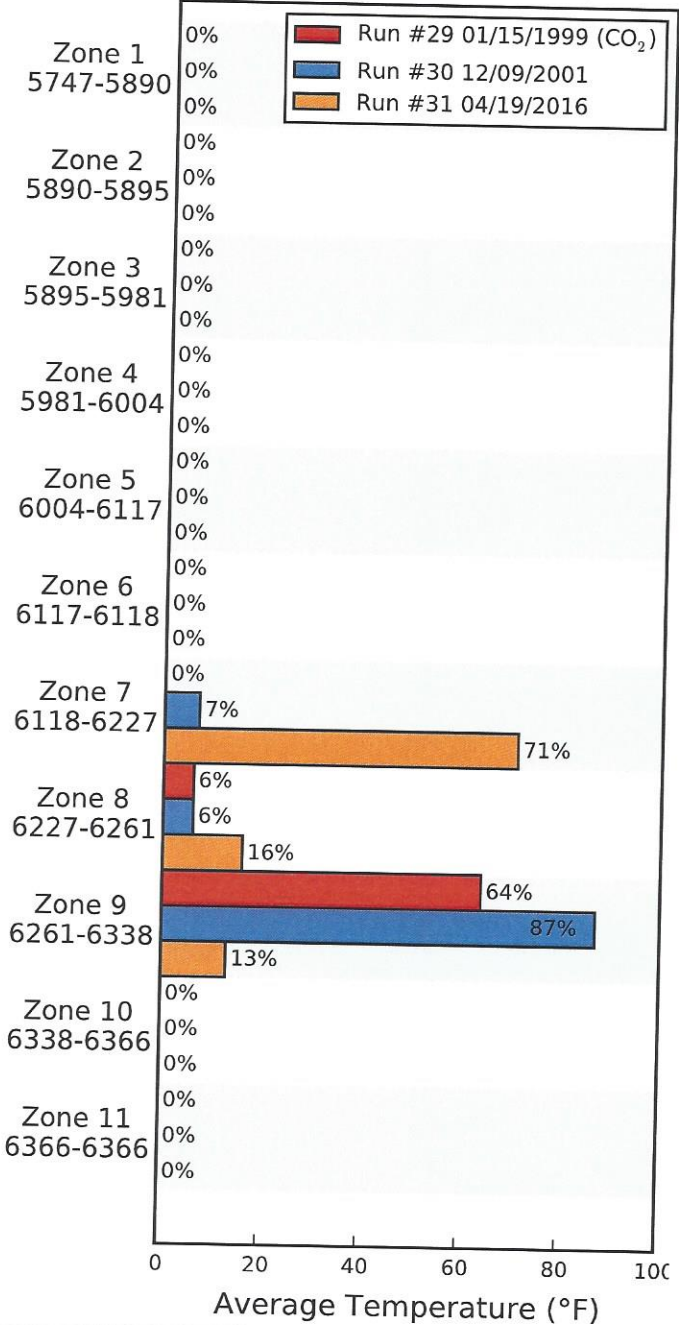
7" 26# Casing	0'-6690'
P.B.T.D	6567'
2-7/8" F.L. Tubing	0'-6091'
Packer	6091'-6098'
2-7/8" F.G.W. TK-15	6098'-6130'
On/Off Tool	6130'-6136'
2-7/8" F.G.W. TK-15	6136'-6142'
Packer	6142'-6146'
2-7/8" F.G.W. TK-15	6146'-6177'
Wireline Entry Guide	6177'-6178'
	S-22
	API No. 051030863000



0% 50% 100%



(%) Injected Into Zone



	Run #29 01/15/1999	Run #30 12/09/2001	Run #31 04/19/2016
Surface	68.0	112.9	116.6
5747-5890	--	--	--
5890-5895	--	--	--
5895-5981	--	--	--
5981-6004	--	--	--
6004-6117	--	--	--
6117-6118	--	--	--
6118-6227	--	--	--
6227-6261	--	--	--
6261-6338	--	--	--
6338-6366	--	--	--
6366-6366	--	--	--
TDL (6555)	133.1	121.1	146.5
Rate (B/D)	2000	1550	2111
Press (PSI)	1450	1000	1450