

LEGEND:

 PROPOSED LOCATION



Caerus Oil & Gas LLC

**PARACHUTE CREEK #5A
LOT 1, SECTION 17, T6S, R96W, 6th P.M.
GARFIELD COUNTY, COLORADO**

DRAWN BY: R.C.

DATE DRAWN: 10-12-15

SCALE: 1:100,000

REVISED: 00-00-00

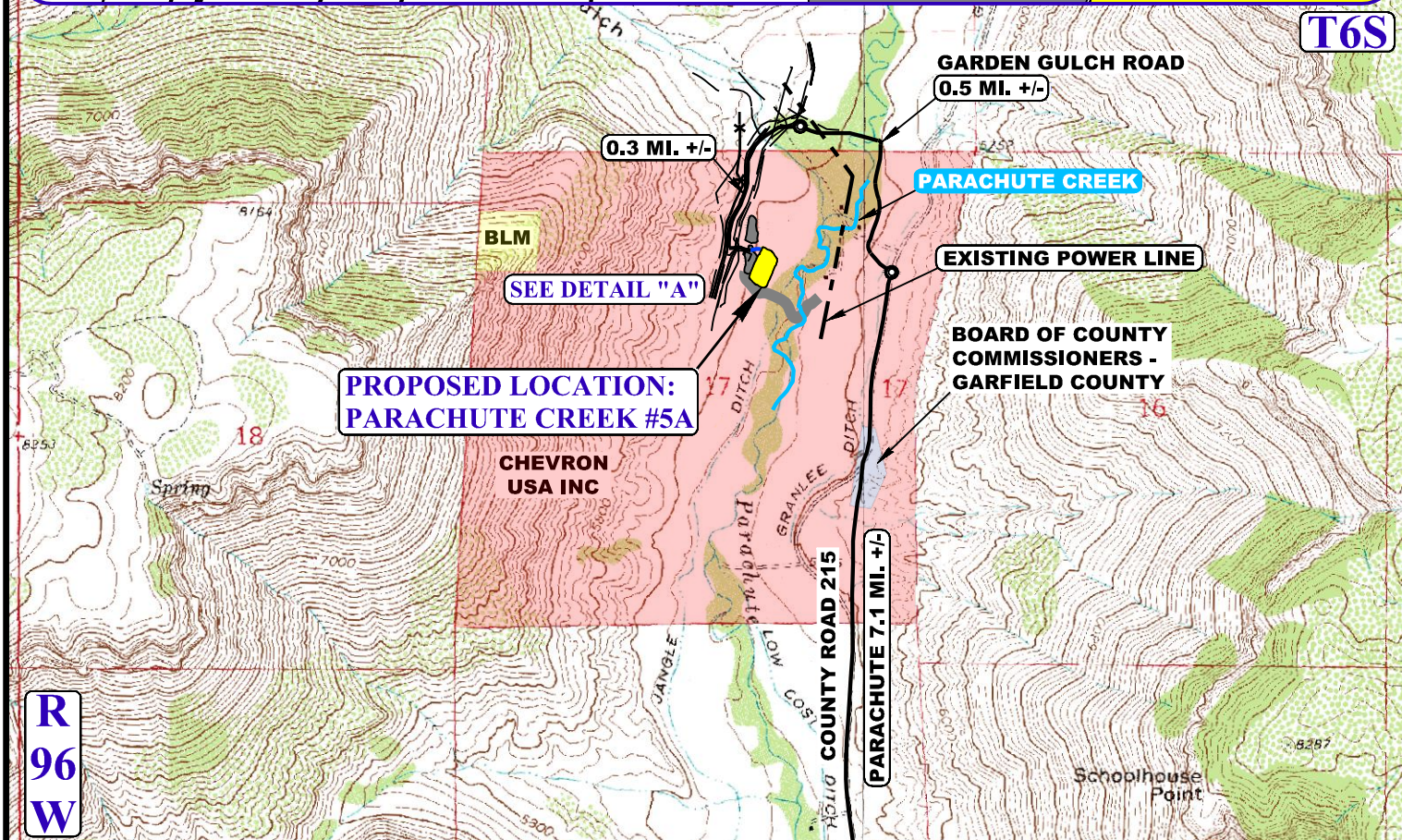
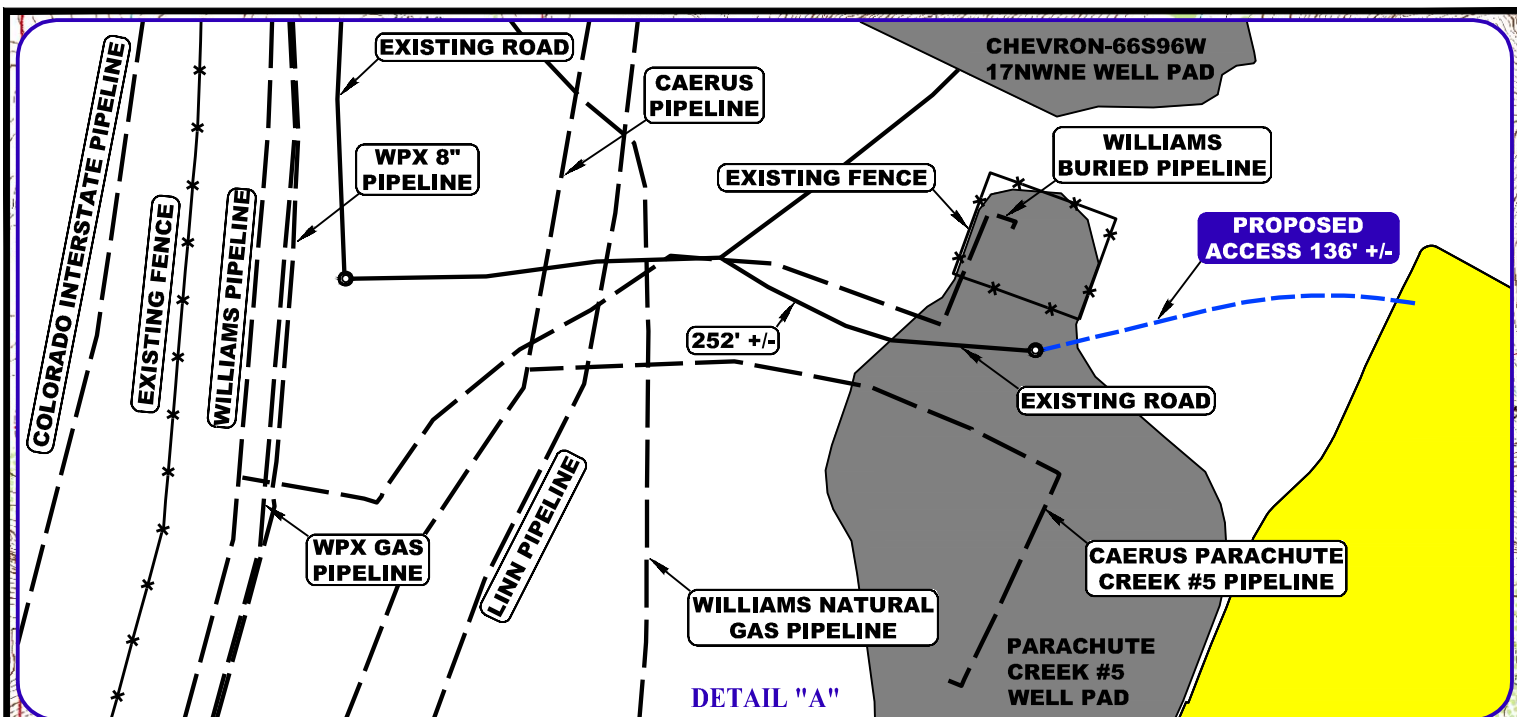
ACCESS ROAD MAP

TOPO A



UELS, LLC

Corporate Office * 85 South 200 East
Vernal, UT 84078 * (435) 789-1017



NOTE: PARCEL DATA SHOWN HAS BEEN OBTAINED FROM VARIOUS SOURCES AND SHOULD BE USED FOR MAPPING, GRAPHIC AND PLANNING PURPOSES ONLY. NO WARRANTY IS MADE BY UINTAH ENGINEERING AND LAND SURVEYING (UELS) FOR ACCURACY OF THE PARCEL DATA.

LEGEND:

- EXISTING ROAD
- PROPOSED ROAD
- EXISTING PIPELINE
- x-x- EXISTING FENCE
- EXISTING DRAINAGE
- EXISTING POWER LINE



UELS, LLC
Corporate Office * 85 South 200 East
Vernal, UT 84078 * (435) 789-1017



Caerus Oil & Gas LLC

PARACHUTE CREEK #5A
LOT 1, SECTION 17, T6S, R96W, 6th P.M.
GARFIELD COUNTY, COLORADO

DRAWN BY: R.C.

DATE DRAWN: 10-12-15

SCALE: 1" = 2000'

REVISED: 00-00-00

ACCESS ROAD MAP

TOPO B