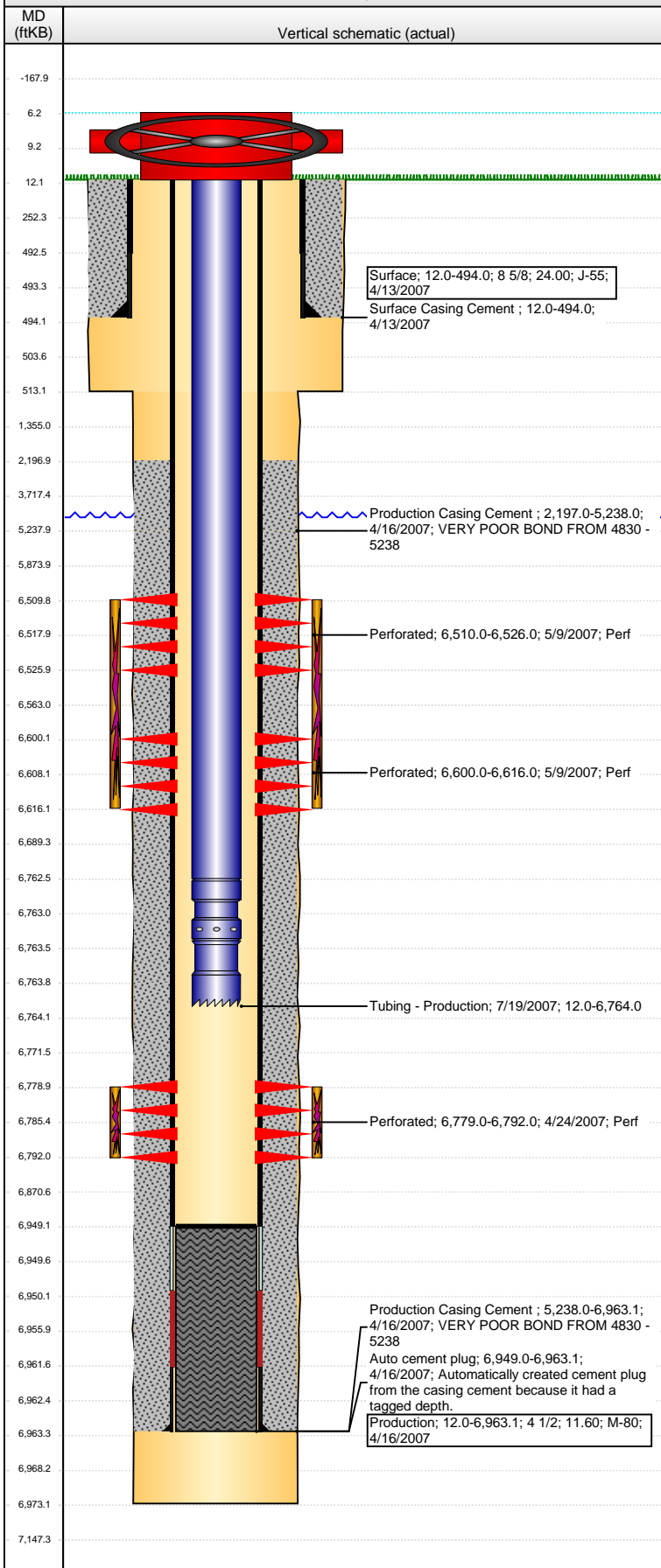


Well Name: LOLOFF B35-29

VERTICAL - ORIGINAL HOLE, 5/4/2016 3:23:52 PM



Well Header

API 05-123-24907	Business Unit DJ BASIN	District 15	Well Config VERTICAL
Original KB Elevation (ft) 4,673	KB - GL / MSL (ftKB) 12.00	Spud Date 4/12/2007	P & A Date

Comment

Directions To Well

CR 57 AND 52 E .4 S INTO

Congressional Location

Quarter 1	Quarter 2	Quarter 3	Quarter 4	Section	Township	Twnshp N...	Range	Rng E/W Dir
		NW	NW	35	5	N	64	W

Bottom Hole Location

North-South Distance (ft)	From N or S Line	East-West Distance (ft)	From E or W Line
---------------------------	------------------	-------------------------	------------------

Plug Back Total Depths

Date	Depth (ftKB)	Method	Com
4/15/2007	6,949.0	CASING TALLY	TOP OF FLOAT COLLAR
4/23/2007	6,939.0	CASED HOLE LOG	DEPTH LOGGER FROM CBL
7/18/2007	6,949.0	TAG	DRILL CIPF AND CIRCULATE TO 6949'

Wellbore Sections

Section Des	Size (in)	Act Top, MD (ftKB)	Act Btm, MD (ftKB)
SURFACE	12 1/4	12.0	513.0
PRODUCTION	7 7/8	513.0	6,973.0

Zone Statuses

Zone Name	Status Date	Status	Fluid Type	Job	Prod Method
CODELL	6/8/2007	PR		DRILLING/CO...	
CODELL	5/18/2009	PR			
CODELL	2/16/2010	PR	Water		Flowing
NIOBRARA	6/8/2007	PR		DRILLING/CO...	
NIOBRARA	2/16/2010	PR	Water		Flowing

Casing Strings

Surface, 494.0ftKB

Casing Description	Run Date	OD (in)	Wt/Len (l...)	Grade	Top, MD (ft...)	MD (ftKB)
Surface	4/13/2007	8 5/8	24.00	J-55	12.0	494.0

Production, 6,963.1ftKB

Casing Description	Run Date	OD (in)	Wt/Len (l...)	Grade	Top, MD (ft...)	MD (ftKB)
Production	4/16/2007	4 1/2	11.60	M-80	12.0	6,963.1

Cement

Description	Top Depth (ftKB)	Bottom Depth (ftKB)
Surface Casing Cement	12.0	494.0
Production Casing Cement	2,197.0	5,238.0
Production Casing Cement	5,238.0	6,963.1

Tubing Strings

Tubing Description	Run Date	String...	ID (in)	Wt (lb/ft)	Grade	Len (ft)	Set De...
Tubing - Production	7/19/2007	2 3/8	1.995	4.70	J-55	6,752.00	

Tubing Components

Item Des	OD (in)	Wt (lb/ft)	Grade	Jts	Len (ft)	Btm (ftKB)	Btm (TVD) (ftKB)
EUE 8rd Tubing	2 3/8	4.70	J-55	219	6,750.35	6,762.4	
Pump Seating Nipple	2 3/8	1.10			1.00	6,763.4	
Notched collar	2 3/8				0.65	6,764.0	

Perforation Data

Zone	Bnch/St g	Entered Shot Total	Top (ftKB)	Btm (ftKB)	Date
NIOBRARA, ORIGINAL HOLE	A	64	6,510.00	6,526.00	5/9/2007
NIOBRARA, ORIGINAL HOLE	B	64	6,600.00	6,616.00	5/9/2007
CODELL, ORIGINAL HOLE		52	6,779.00	6,792.00	4/24/2007

Stimulations & Treatments

Date	Zone	Primary Job Type
5/9/2007	NIOBRARA, ORIGINAL HOLE	DRILLING/COMPLETION - ORIGINAL
Technical Result		Tech Result Details
Comment		Tech Result Note

Well Name: LOLOFF B35-29

VERTICAL - ORIGINAL HOLE, 5/4/2016 3:23:55 PM

Stimulations & Treatments

Date 5/9/2007	Zone CODELL, ORIGINAL HOLE	Primary Job Type DRILLING/COMPLETION - ORIGINAL
Technical Result	Tech Result Details	Tech Result Note
Comment		

Other In Hole

Run Date	Des	OD (in)	Top (ftKB)	Btm (ftKB)

Logs

Date	Type	Top, MD (ftKB)	Btm, MD (ftKB)
4/15/2007	COMPENSATED DENSITY	2,440.0	6,953.0
4/15/2007	INDUCTION	494.0	6,973.0
4/23/2007	CBL/CCL/GR	2,115.0	6,934.0
11/17/2014	GYRO	10.0	6,700.0

