



Kerr-McGee Oil & Gas Onshore LP

A subsidiary of Anadarko Petroleum Corporation

1099 18th Street
Denver, CO 80202
720-929-6000

April 21, 2016

Matt Lepore
Director, Colorado Oil and Gas Conservation Commission
Department of Natural Resources
The Chancery Building
1120 Lincoln Street, Suite 801
Denver, CO 80203

Re: **30 Day Certification Letter - 318A.e**
MARRS 3N-10HZ (Doc# 401026683)
Township 1 North, Range 67 West
Section 22: SENW
Unit Acreage: 280 acres
Unit Spacing: SEC 10: SESW
SEC 15: E2W2
SEC 22: E2NW
Weld County, Colorado

Dear Director Lepore:

Kerr McGee Oil and Gas Onshore LP ("KMG") hereby certifies that KMG owns one hundred percent (100%) of the leasehold interest in the mineral rights in the proposed spacing unit. KMG hereby respectfully requests approval of this boundary well.

If you have any questions or issues regarding this permit, please contact our office.

Sincerely,

Kerr-McGee Oil & Gas Onshore LP

A handwritten signature in black ink, appearing to read 'Kayla Hesseltine', written over a horizontal line.

Kayla Hesseltine
Regulatory Specialist

PROPOSED SPACING UNIT

T1N, R67W

MATCH LINE
SEE SHEET 2

NW. COR.
SEC. 22, T1N, R67W
FOUND 3 1/4" ALUM. CAP
L.S. NO. 13155

N. 1/4 COR.
SEC. 22, T1N, R67W
FOUND 2 1/2" ALUM. CAP
L.S. NO. 28656

NE. COR.
SEC. 22, T1N, R67W
FOUND 2 1/2" ALUM. CAP
ILLEGIBLE

N 01°05'14" W 2638.62' (M)

S 89°24'09" W 2662.70' (M)

S 89°24'00" W 2662.76' (M)

N 00°26'14" W 2636.81' (M)

1806'

2011'

MARRS 3N-10HZ
SURFACE LOCATION

22

E. 1/4 COR.
SEC. 22, T1N, R67W
FOUND 2 1/2" ALUM. CAP
ILLEGIBLE

W. 1/4 COR.
SEC. 22, T1N, R67W
FOUND 3 1/4" ALUM. CAP
L.S. NO. 6973

S 89°22'57" W
2643.88' (C)

S 89°22'57" W
2651.65' (C)

N 00°45'14" W 2628.97' (M)

N 00°40'43" W
2632.95' (C)

SURFACE LOCATION: NAD 83
GROUND ELEVATION= 4979.1'
LATITUDE= 40.038111°
LONGITUDE= -104.879028°
LATITUDE= 40°02'17.200"
LONGITUDE= -104°52'44.501"
HEEL LOCATION: NAD 83
LATITUDE= 40.039012°
LONGITUDE= -104.879776°
LATITUDE= 40°02'20.443"
LONGITUDE= -104°52'47.193"
BOTTOM HOLE LOCATION: NAD 83
LATITUDE= 40.060471°
LONGITUDE= -104.879818°
LATITUDE= 40°03'37.696"
LONGITUDE= -104°52'47.345"

S. 1/4 COR.
SEC. 22, T1N, R67W
FOUND 3 1/4" ALUM. CAP
L.S. NO. 13258

SE. COR.
SEC. 22, T1N, R67W
FOUND 3 1/4" ALUM. CAP
L.S. NO. 13155

S 89°28'08" W 2640.44' (M)

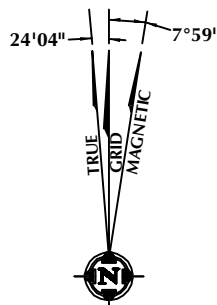
S 89°28'19" W 2640.86' (M)

CERTIFICATE OF SURVEYOR:

THIS IS TO CERTIFY THAT THE ABOVE PLAT WAS PREPARED FROM FIELD NOTES OF ACTUAL SURVEY MADE BY ME OR UNDER MY SUPERVISION AND THAT THE SAME ARE TRUE AND CORRECT TO THE BEST OF MY KNOWLEDGE AND BELIEF. THIS CERTIFICATE DOES NOT REPRESENT A LAND SURVEY PLAT OR IMPROVEMENT SURVEY PLAT AS DEFINED BY C.R.S. 38-51-302 AND CANNOT BE RELIED UPON TO DETERMINE OWNERSHIP.

John R. Slaugh
JOHN R. SLAUGH
PROFESSIONAL LAND SURVEYOR
COLORADO REGISTRATION NUMBER 38230
3/21/16

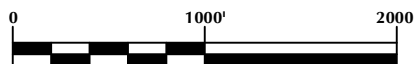
NOTICE:
ACCORDING TO COLORADO STATE LAW YOU MUST COMMENCE ANY LEGAL ACTION BASED UPON ANY DEFECT IN THIS SURVEY WITHIN THREE YEARS AFTER YOU FIRST DISCOVER SUCH DEFECT. IN NO EVENT MAY ANY ACTION BASED UPON ANY DEFECT IN THIS SURVEY BE COMMENCED MORE THAN TEN YEARS FROM THE DATE ON THE CERTIFICATION SHOWN HEREON.



NOTE:
MAGNETIC NORTH IS CURRENT AS OF 3/3/2016.
MAGNETIC NORTH CHANGES WEST 0°06' PER YEAR.

NOTES:

- ▲ INDICATES SECTION CORNER
- INDICATES CALCULATED CORNER
- ELEVATION BASED ON NAVD88 (GEOID12B)
- BASIS OF BEARING DERIVED FROM COLORADO COORDINATE SYSTEM OF 1983 NORTH ZONE.
- ALL MEASURED DISTANCES ARE GRID.
- COMBINED SCALE FACTOR: .99972813 CALCULATED AT THE W. 1/4 COR. OF SECTION 22
- OPERATOR: ROB WILSON / PDOP = 1.2
- SEE ADDENDUM TO WELL LOCATION CERTIFICATE FOR EXISTING IMPROVEMENTS WITHIN 500' OF THE WELL PAD.
- WELL FOOTAGES ARE MEASURED AT RIGHT ANGLES TO THE SECTION LINES.
- THE BOTTOM OF HOLE BEARS N00°29'14"W, 7817' FROM THE HEEL LOCATION.



SCALE: 1" = 1000'

WELL PAD - MARRS 28C-10HZ

MARRS 3N-10HZ
WELL LOCATION CERTIFICATE
2075' FNL & 2011' FWL SENW (SURFACE)
1746' FNL & 1806' FWL SENW (HEEL)
LOCATED IN SECTION 22
800' FSL & 1819' FWL SESW (BOTTOM)
LOCATED IN SECTION 10
T1N, R67W, 6TH P.M.
WELD COUNTY, COLORADO

**Kerr-McGee Oil &
Gas Onshore L.P.**
1099 18th Street
Denver, Colorado 80202



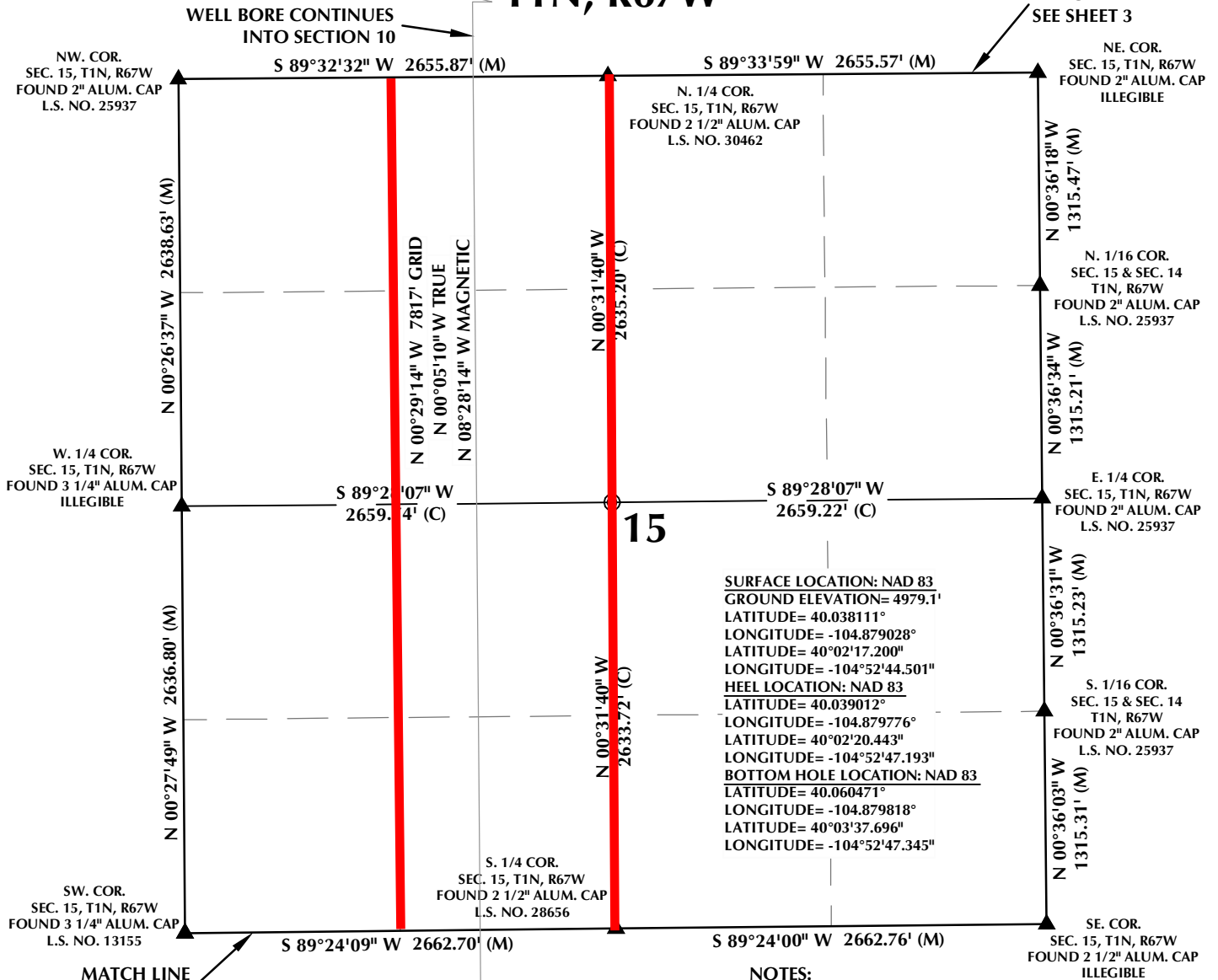
CONSULTING, LLC

SHERIDAN OFFICE
1095 Saberton Avenue
Sheridan, Wyoming 82801
Phone 307-674-0609

LOVELAND OFFICE
1635 Foxtrail Drive, Suite 204
Loveland, Colorado 80538
Phone 970-776-4331

DRAFTED BY:	LMO	CHECKED BY:	JRS	SHEET NO:
DATE DRAFTED:	3/21/16	DATE SURVEYED:	1/19/16	1
REVISED:		FILE NAME:	15-73	1 OF 3

T1N, R67W

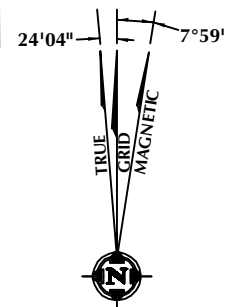


CERTIFICATE OF SURVEYOR:

THIS IS TO CERTIFY THAT THE ABOVE PLAT WAS PREPARED FROM FIELD NOTES OF ACTUAL SURVEY MADE BY ME OR UNDER MY SUPERVISION AND THAT THE SAME ARE TRUE AND CORRECT TO THE BEST OF MY KNOWLEDGE AND BELIEF. THIS CERTIFICATE DOES NOT REPRESENT A LAND SURVEY PLAT OR IMPROVEMENT SURVEY PLAT AS DEFINED BY C.R.S. 38-51-302 AND CANNOT BE RELIED UPON TO DETERMINE OWNERSHIP.

John R. Slaugh
JOHN R. SLAUGH
 PROFESSIONAL LAND SURVEYOR
 COLORADO REGISTRATION NUMBER 38230

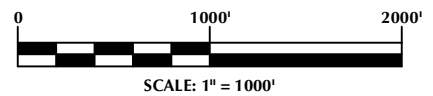
NOTICE:
 ACCORDING TO COLORADO STATE LAW YOU MUST COMMENCE ANY LEGAL ACTION BASED UPON ANY DEFECT IN THIS SURVEY WITHIN THREE YEARS AFTER YOU FIRST DISCOVER SUCH DEFECT. IN NO EVENT MAY ANY ACTION BASED UPON ANY DEFECT IN THIS SURVEY BE COMMENCED MORE THAN TEN YEARS FROM THE DATE ON THE CERTIFICATION SHOWN HEREON.



NOTE:
 MAGNETIC NORTH IS CURRENT AS OF 3/3/2016.
 MAGNETIC NORTH CHANGES WEST 0°06' PER YEAR.

NOTES:

- ▲ INDICATES SECTION CORNER
- INDICATES CALCULATED CORNER
- ELEVATION BASED ON NAVD88 (GEOID12B)
- BASIS OF BEARING DERIVED FROM COLORADO COORDINATE SYSTEM OF 1983 NORTH ZONE.
- ALL MEASURED DISTANCES ARE GRID.
 COMBINED SCALE FACTOR: .99972813 CALCULATED AT THE W. 1/4 COR. OF SECTION 22
- OPERATOR: ROB WILSON / PDOP = 1.2
- SEE ADDENDUM TO WELL LOCATION CERTIFICATE FOR EXISTING IMPROVEMENTS WITHIN 500' OF THE WELL PAD.
- WELL FOOTAGES ARE MEASURED AT RIGHT ANGLES TO THE SECTION LINES.
- THE BOTTOM OF HOLE BEARS N00°29'14"W, 7817' FROM THE HEEL LOCATION.



WELL PAD - MARRS 28C-10HZ

MARRS 3N-10HZ
WELL LOCATION CERTIFICATE
 2075' FNL & 2011' FWL SENW (SURFACE)
 1746' FNL & 1806' FWL SENW (HEEL)
 LOCATED IN SECTION 22
 800' FSL & 1819' FWL SESW (BOTTOM)
 LOCATED IN SECTION 10
 T1N, R67W, 6TH P.M.
 WELD COUNTY, COLORADO

**Kerr-McGee Oil &
 Gas Onshore L.P.**
 1099 18th Street
 Denver, Colorado 80202



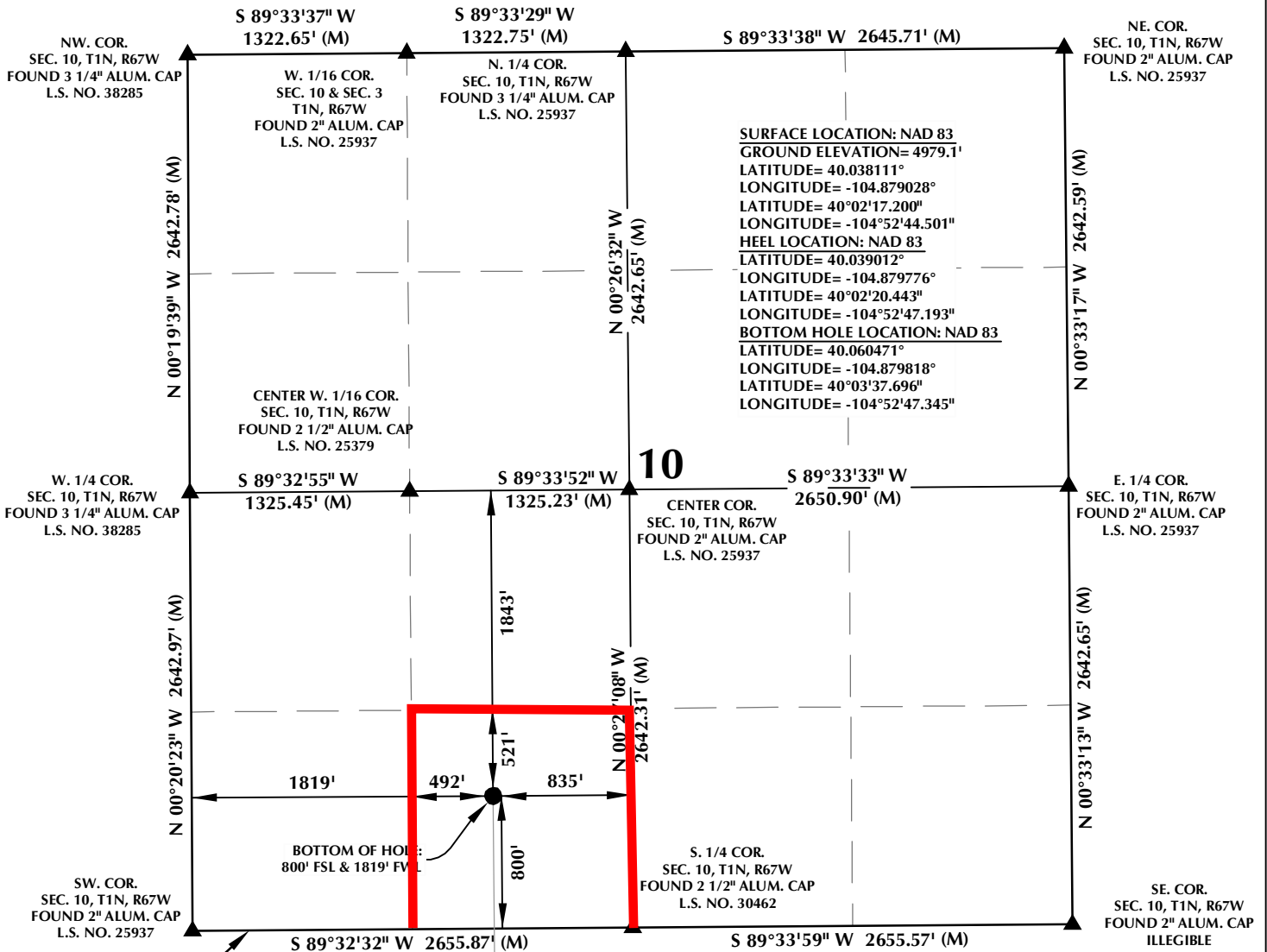
CONSULTING, LLC

SHERIDAN OFFICE
 1095 Saberton Avenue
 Sheridan, Wyoming 82801
 Phone 307-674-0609

LOVELAND OFFICE
 1635 Foxtrail Drive, Suite 204
 Loveland, Colorado 80538
 Phone 970-776-4331

DRAFTED BY:	LMO	CHECKED BY:	JRS	SHEET NO:
DATE DRAFTED:	3/21/16	DATE SURVEYED:	1/19/16	2
REVISED:		FILE NAME:	15-73	2 OF 3

T1N, R67W



CERTIFICATE OF SURVEYOR:

THIS IS TO CERTIFY THAT THE ABOVE PLAT WAS PREPARED FROM FIELD NOTES OF ACTUAL SURVEY MADE BY ME OR UNDER MY SUPERVISION, AND THAT THE SAME ARE TRUE AND CORRECT TO THE BEST OF MY KNOWLEDGE AND BELIEF. THIS CERTIFICATE DOES NOT REPRESENT A LAND SURVEY PLAT OR IMPROVEMENT SURVEY PLAT AS DEFINED BY C.R.S. 38-51-302 AND CANNOT BE RELIED UPON TO DETERMINE OWNERSHIP.

John R. Slough
JOHN R. SLOUGH
PROFESSIONAL LAND SURVEYOR
COLORADO REGISTRATION NUMBER 38230

NOTICE:
ACCORDING TO COLORADO STATE LAW YOU MUST COMMENCE ANY LEGAL ACTION BASED UPON ANY DEFECT IN THIS SURVEY WITHIN THREE YEARS AFTER YOU FIRST DISCOVER SUCH DEFECT. IN NO EVENT MAY ANY ACTION BASED UPON ANY DEFECT IN THIS SURVEY BE COMMENCED MORE THAN TEN YEARS FROM THE DATE ON THE CERTIFICATION SHOWN HEREON.

NOTE:
MAGNETIC NORTH IS CURRENT AS OF 3/3/2016.
MAGNETIC NORTH CHANGES WEST 0°06' PER YEAR.

NOTES:

- ▲ INDICATES SECTION CORNER
- INDICATES CALCULATED CORNER
- ELEVATION BASED ON NAVD88 (GEOID12B)
- BASIS OF BEARING DERIVED FROM COLORADO COORDINATE SYSTEM OF 1983 NORTH ZONE.
- ALL MEASURED DISTANCES ARE GRID.
COMBINED SCALE FACTOR: .99972813 CALCULATED AT THE W. 1/4 COR. OF SECTION 22
- OPERATOR: ROB WILSON / PDOP = 1.2
- SEE ADDENDUM TO WELL LOCATION CERTIFICATE FOR EXISTING IMPROVEMENTS WITHIN 500' OF THE WELL PAD.
- WELL FOOTAGES ARE MEASURED AT RIGHT ANGLES TO THE SECTION LINES.
- THE BOTTOM OF HOLE BEARS N00°29'14"W, 7817' FROM THE HEEL LOCATION.



WELL PAD - MARRS 28C-10HZ

MARRS 3N-10HZ
WELL LOCATION CERTIFICATE
2075' FNL & 2011' FWL SENW (SURFACE)
1746' FNL & 1806' FWL SENW (HEEL)
LOCATED IN SECTION 22
800' FSL & 1819' FWL SESW (BOTTOM)
LOCATED IN SECTION 10
T1N, R67W, 6TH P.M.
WELD COUNTY, COLORADO

**Kerr-McGee Oil &
Gas Onshore L.P.**
1099 18th Street
Denver, Colorado 80202



CONSULTING, LLC

SHERIDAN OFFICE
1095 Saberton Avenue
Sheridan, Wyoming 82801
Phone 307-674-0609

LOVELAND OFFICE
1635 Foxtrail Drive, Suite 204
Loveland, Colorado 80538
Phone 970-776-4331

DRAFTED BY:	LMO	CHECKED BY:	JRS	SHEET NO:
DATE DRAFTED:	3/21/16	DATE SURVEYED:	1/19/16	3
REVISED:		FILE NAME:	15-73	3 OF 3