



# Kerr-McGee Oil & Gas Onshore LP

A subsidiary of Anadarko Petroleum Corporation

1099 18<sup>th</sup> Street  
Denver, CO 80202  
720-929-6000

April 21, 2016

Matt Lepore  
Director, Colorado Oil and Gas Conservation Commission  
Department of Natural Resources  
The Chancery Building  
1120 Lincoln Street, Suite 801  
Denver, CO 80203

Re: **30 Day Certification Letter - 318A.e**  
MARRS 28C-10HZ (Doc# 401026680)  
Township 1 North, Range 67 West  
Section 22: SENW  
Unit Acreage: 280 acres  
Unit Spacing: SEC 10: SESW  
SEC 15: E2W2  
SEC 22: E2NW  
Weld County, Colorado

Dear Director Lepore:

Kerr McGee Oil and Gas Onshore LP ("KMG") hereby certifies that KMG owns one hundred percent (100%) of the leasehold interest in the mineral rights in the proposed spacing unit. KMG hereby respectfully requests approval of this boundary well.

If you have any questions or issues regarding this permit, please contact our office.

Sincerely,

**Kerr-McGee Oil & Gas Onshore LP**

A handwritten signature in black ink, appearing to read "Kayla Hesseltine".

**Kayla Hesseltine**  
**Regulatory Specialist**

T1N, R67W

WELL BORE CONTINUES  
INTO SECTION 15

MATCH LINE  
SEE SHEET 2

NW. COR.  
SEC. 22, T1N, R67W  
FOUND 3 1/4" ALUM. CAP  
L.S. NO. 13155

N. 1/4 COR.  
SEC. 22, T1N, R67W  
FOUND 2 1/2" ALUM. CAP  
L.S. NO. 28656

NE. COR.  
SEC. 22, T1N, R67W  
FOUND 2 1/2" ALUM. CAP  
ILLEGIBLE

N 01°05'14" W 2638.62' (M)

S 89°24'09" W 2662.70' (M)

S 89°24'00" W 2662.76' (M)

N 00°26'14" W 2636.81' (M)

2136'

2011'

2090'

1758'

N 00°40'43" W 2637.61' (C)

HEEL LOCATION

MARRS 28C-10HZ  
SURFACE LOCATION

22

W. 1/4 COR.  
SEC. 22, T1N, R67W  
FOUND 3 1/4" ALUM. CAP  
L.S. NO. 6973

S 89°22'57" W 2643.88' (C)

S 89°22'57" W 2651.65' (C)

E. 1/4 COR.  
SEC. 22, T1N, R67W  
FOUND 2 1/2" ALUM. CAP  
ILLEGIBLE

N 00°45'14" W 2628.97' (M)

N 00°40'43" W 2632.95' (C)

N 00°26'40" W 2637.08' (M)

SURFACE LOCATION: NAD 83  
GROUND ELEVATION= 4978.9'  
LATITUDE= 40.038070°  
LONGITUDE= -104.879028°  
LATITUDE= 40°02'17.051"  
LONGITUDE= -104°52'44.502"  
HEEL LOCATION: NAD 83  
LATITUDE= 40.038982°  
LONGITUDE= -104.878597°  
LATITUDE= 40°02'20.335"  
LONGITUDE= -104°52'42.948"  
BOTTOM HOLE LOCATION: NAD 83  
LATITUDE= 40.060472°  
LONGITUDE= -104.878708°  
LATITUDE= 40°03'37.699"  
LONGITUDE= -104°52'43.349"

S. 1/4 COR.  
SEC. 22, T1N, R67W  
FOUND 3 1/4" ALUM. CAP  
L.S. NO. 13258

SW. COR.  
SEC. 22, T1N, R67W  
FOUND 3 1/4" ALUM. CAP  
L.S. NO. 13155

S 89°28'08" W 2640.44' (M)

S 89°28'19" W 2640.86' (M)

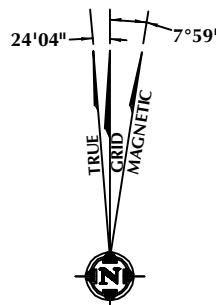
SE. COR.  
SEC. 22, T1N, R67W  
FOUND 3 1/4" ALUM. CAP  
L.S. NO. 13155

# CERTIFICATE OF SURVEYOR:

THIS IS TO CERTIFY THAT THE ABOVE PLAT WAS PREPARED FROM FIELD NOTES OF ACTUAL SURVEY MADE BY ME OR UNDER MY SUPERVISION, AND THAT THE SAME ARE TRUE AND CORRECT TO THE BEST OF MY KNOWLEDGE AND BELIEF. THIS CERTIFICATE DOES NOT REPRESENT A LAND SURVEY PLAT OR IMPROVEMENT SURVEY PLAT AS DEFINED BY C.R.S. 38-51-302 AND CANNOT BE RELIED UPON TO DETERMINE OWNERSHIP.

*John R. Slaugh*  
JOHN R. SLAUGH  
PROFESSIONAL LAND SURVEYOR  
COLORADO REGISTRATION NUMBER 38230

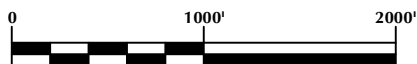
NOTICE:  
ACCORDING TO COLORADO STATE LAW YOU MUST COMMENCE ANY LEGAL ACTION BASED UPON ANY DEFECT IN THIS SURVEY WITHIN THREE YEARS AFTER YOU FIRST DISCOVER SUCH DEFECT. IN NO EVENT MAY ANY ACTION BASED UPON ANY DEFECT IN THIS SURVEY BE COMMENCED MORE THAN TEN YEARS FROM THE DATE ON THE CERTIFICATION SHOWN HEREON.



NOTE:  
MAGNETIC NORTH IS CURRENT AS OF 3/3/2016.  
MAGNETIC NORTH CHANGES WEST 0°06' PER YEAR.

## NOTES:

- ▲ INDICATES SECTION CORNER
- INDICATES CALCULATED CORNER
- ELEVATION BASED ON NAVD88 (GEOID12B)
- BASIS OF BEARING DERIVED FROM COLORADO COORDINATE SYSTEM OF 1983 NORTH ZONE.
- ALL MEASURED DISTANCES ARE GRID.
- COMBINED SCALE FACTOR: .99972813 CALCULATED AT THE W. 1/4 COR. OF SECTION 22
- OPERATOR: ROB WILSON / PDOP = 1.2
- SEE ADDENDUM TO WELL LOCATION CERTIFICATE FOR EXISTING IMPROVEMENTS WITHIN 500' OF THE WELL PAD.
- WELL FOOTAGES ARE MEASURED AT RIGHT ANGLES TO THE SECTION LINES.
- THE BOTTOM OF HOLE BEARS N00°37'47"W, 7828' FROM THE HEEL LOCATION.



SCALE: 1" = 1000'

## WELL PAD - MARRS 28C-10HZ

MARRS 28C-10HZ  
WELL LOCATION CERTIFICATE  
2090' FNL & 2011' FWL SENW (SURFACE)  
1758' FNL & 2136' FWL SENW (HEEL)  
LOCATED IN SECTION 22  
800' FSL & 2130' FWL SESW (BOTTOM)  
LOCATED IN SECTION 10  
T1N, R67W, 6TH P.M.  
WELD COUNTY, COLORADO

Kerr-McGee Oil &  
Gas Onshore L.P.  
1099 18th Street  
Denver, Colorado 80202



## CONSULTING, LLC

SHERIDAN OFFICE  
1095 Saberton Avenue  
Sheridan, Wyoming 82801  
Phone 307-674-0609

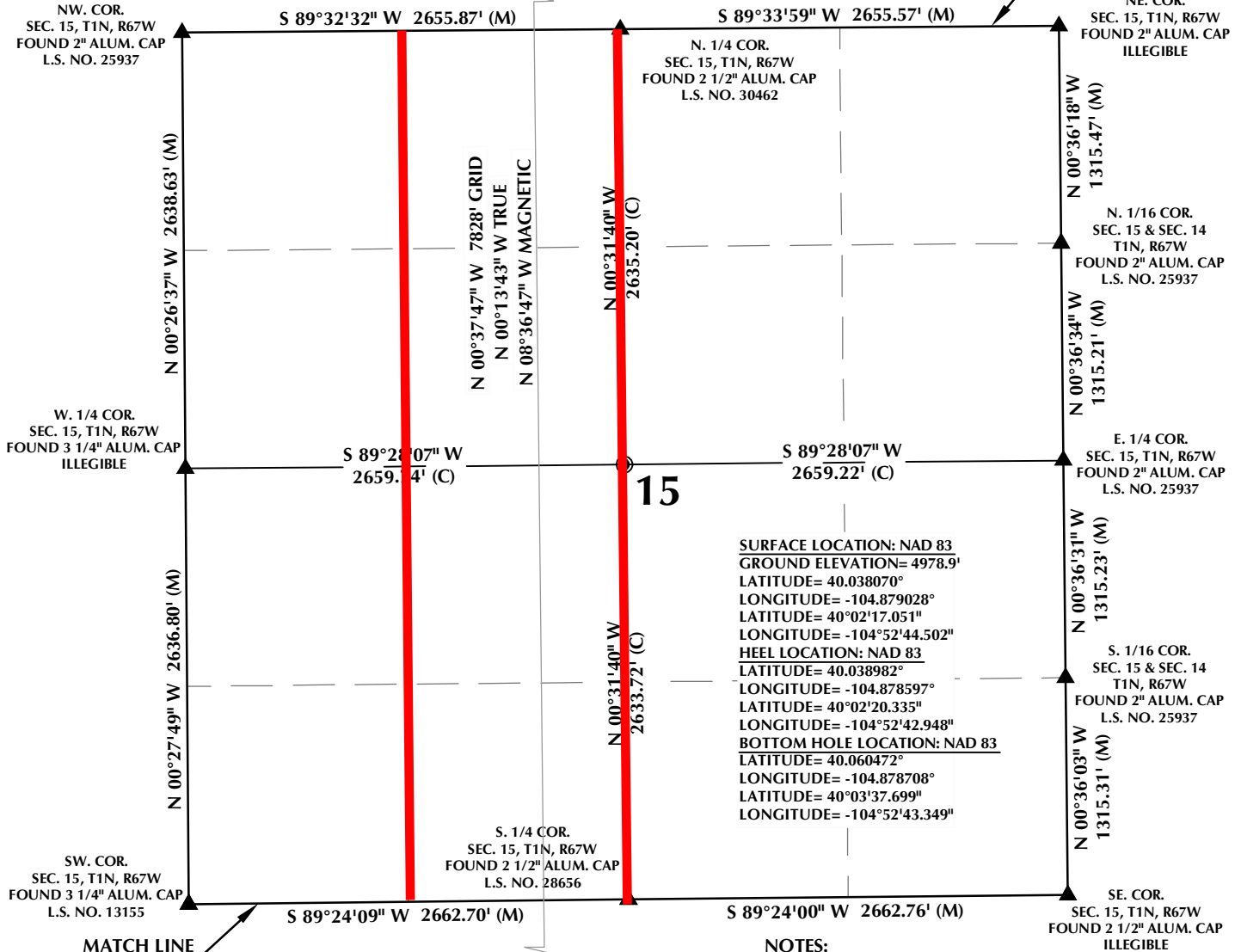
LOVELAND OFFICE  
1635 Foxtrail Drive, Suite 204  
Loveland, Colorado 80538  
Phone 970-776-4331

DRAFTED BY:	LMO	CHECKED BY:	JRS	SHEET NO:
DATE DRAFTED:	3/21/16	DATE SURVEYED:	1/19/16	1
REVISED:		FILE NAME:	15-73	1 OF 3

# T1N, R67W

WELL BORE CONTINUES  
INTO SECTION 10

MATCH LINE  
SEE SHEET 3

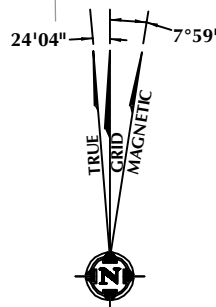


## CERTIFICATE OF SURVEYOR:

THIS IS TO CERTIFY THAT THE ABOVE PLAT WAS PREPARED FROM FIELD NOTES OF ACTUAL SURVEY MADE BY ME OR UNDER MY SUPERVISION AND THAT THE SAME ARE TRUE AND CORRECT TO THE BEST OF MY KNOWLEDGE AND BELIEF. THIS CERTIFICATE DOES NOT REPRESENT A LAND SURVEY PLAT OR IMPROVEMENT SURVEY PLAT AS DEFINED BY C.R.S. 38-51-302 AND CANNOT BE RELIED UPON TO DETERMINE OWNERSHIP.

*John R. Slaugh*  
**JOHN R. SLAUGH**  
 PROFESSIONAL LAND SURVEYOR  
 COLORADO REGISTRATION NUMBER 38230

NOTICE:  
 ACCORDING TO COLORADO STATE LAW YOU MUST COMMENCE ANY LEGAL ACTION BASED UPON ANY DEFECT IN THIS SURVEY WITHIN THREE YEARS AFTER YOU FIRST DISCOVER SUCH DEFECT. IN NO EVENT MAY ANY ACTION BASED UPON ANY DEFECT IN THIS SURVEY BE COMMENCED MORE THAN TEN YEARS FROM THE DATE ON THE CERTIFICATION SHOWN HEREON.



NOTE:  
 MAGNETIC NORTH IS CURRENT AS OF 3/3/2016.  
 MAGNETIC NORTH CHANGES WEST 0°06' PER YEAR.

## NOTES:

- ▲ INDICATES SECTION CORNER
- INDICATES CALCULATED CORNER
- ELEVATION BASED ON NAVD88 (GEOID12B)
- BASIS OF BEARING DERIVED FROM COLORADO COORDINATE SYSTEM OF 1983 NORTH ZONE.
- ALL MEASURED DISTANCES ARE GRID.
- COMBINED SCALE FACTOR: .99972813 CALCULATED AT THE W. 1/4 COR. OF SECTION 22
- OPERATOR: ROB WILSON / PDOP = 1.2
- SEE ADDENDUM TO WELL LOCATION CERTIFICATE FOR EXISTING IMPROVEMENTS WITHIN 500' OF THE WELL PAD.
- WELL FOOTAGES ARE MEASURED AT RIGHT ANGLES TO THE SECTION LINES.
- THE BOTTOM OF HOLE BEARS N00°37'47"W, 7828' FROM THE HEEL LOCATION.



SCALE: 1" = 1000'

## WELL PAD - MARRS 28C-10HZ

**MARRS 28C-10HZ**  
**WELL LOCATION CERTIFICATE**  
 2090' FNL & 2011' FWL SENW (SURFACE)  
 1758' FNL & 2136' FWL SENW (HEEL)  
 LOCATED IN SECTION 22  
 800' FSL & 2130' FWL SESW (BOTTOM)  
 LOCATED IN SECTION 10  
 T1N, R67W, 6TH P.M.  
 WELD COUNTY, COLORADO

**Kerr-McGee Oil &  
 Gas Onshore L.P.**  
 1099 18th Street  
 Denver, Colorado 80202



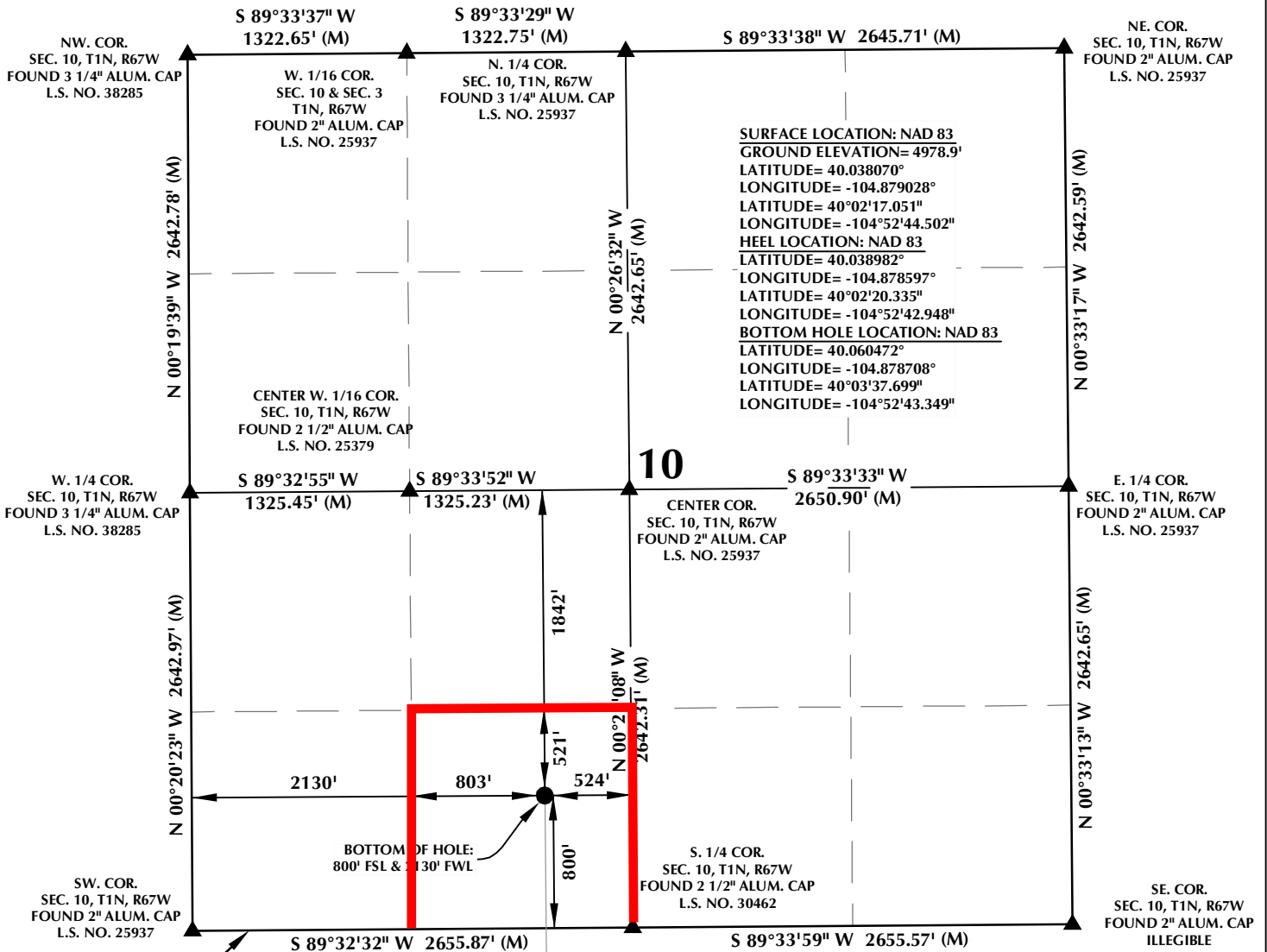
## CONSULTING, LLC

**SHERIDAN OFFICE**  
 1095 Saberton Avenue  
 Sheridan, Wyoming 82801  
 Phone 307-674-0609

**LOVELAND OFFICE**  
 1635 Foxtrail Drive, Suite 204  
 Loveland, Colorado 80538  
 Phone 970-776-4331

DRAFTED BY:	LMO	CHECKED BY:	JRS	SHEET NO:
DATE DRAFTED:	3/21/16	DATE SURVEYED:	1/19/16	2
REVISED:		FILE NAME:	15-73	2 OF 3

# T1N, R67W



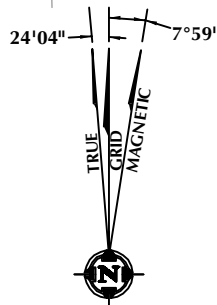
## CERTIFICATE OF SURVEYOR:

THIS IS TO CERTIFY THAT THE ABOVE PLAT WAS PREPARED FROM FIELD NOTES OF ACTUAL SURVEY MADE BY ME OR UNDER MY SUPERVISION AND THAT THE SAME ARE TRUE AND CORRECT TO THE BEST OF MY KNOWLEDGE AND BELIEF. THIS CERTIFICATE DOES NOT REPRESENT A LAND SURVEY PLAT OR IMPROVEMENT SURVEY PLAT AS DEFINED BY C.R.S. 38-51-302 AND CANNOT BE RELIED UPON TO DETERMINE OWNERSHIP.

*John R. Slaugh*  
**JOHN R. SLAUGH**  
 PROFESSIONAL LAND SURVEYOR  
 COLORADO REGISTRATION NUMBER 38230

**NOTICE:**  
 ACCORDING TO COLORADO STATE LAW YOU MUST COMMENCE ANY LEGAL ACTION BASED UPON ANY DEFECT IN THIS SURVEY WITHIN THREE YEARS AFTER YOU FIRST DISCOVER SUCH DEFECT. IN NO EVENT MAY ANY ACTION BASED UPON ANY DEFECT IN THIS SURVEY BE COMMENCED MORE THAN TEN YEARS FROM THE DATE ON THE CERTIFICATION SHOWN HEREON.

**NOTE:**  
 MAGNETIC NORTH IS CURRENT AS OF 3/3/2016.  
 MAGNETIC NORTH CHANGES WEST 0°06' PER YEAR.



## NOTES:

- ▲ INDICATES SECTION CORNER
- INDICATES CALCULATED CORNER
- ELEVATION BASED ON NAVD88 (GEOID12B)
- BASIS OF BEARING DERIVED FROM COLORADO COORDINATE SYSTEM OF 1983 NORTH ZONE.
- ALL MEASURED DISTANCES ARE GRID.
- COMBINED SCALE FACTOR: .99972813 CALCULATED AT THE W. 1/4 COR. OF SECTION 22
- OPERATOR: ROB WILSON / PDOP = 1.2
- SEE ADDENDUM TO WELL LOCATION CERTIFICATE FOR EXISTING IMPROVEMENTS WITHIN 500' OF THE WELL PAD.
- WELL FOOTAGES ARE MEASURED AT RIGHT ANGLES TO THE SECTION LINES.
- THE BOTTOM OF HOLE BEARS N00°37'47"W, 7828' FROM THE HEEL LOCATION.



SCALE: 1" = 1000'

## WELL PAD - MARRS 28C-10HZ

**MARRS 28C-10HZ**  
**WELL LOCATION CERTIFICATE**  
 2090' FNL & 2011' FWL SENW (SURFACE)  
 1758' FNL & 2136' FWL SENW (HEEL)  
 LOCATED IN SECTION 22  
 800' FSL & 2130' FWL SESW (BOTTOM)  
 LOCATED IN SECTION 10  
 T1N, R67W, 6TH P.M.  
 WELD COUNTY, COLORADO

**Kerr-McGee Oil &  
 Gas Onshore L.P.**  
 1099 18th Street  
 Denver, Colorado 80202



## CONSULTING, LLC

**SHERIDAN OFFICE**  
 1095 Saberton Avenue  
 Sheridan, Wyoming 82801  
 Phone 307-674-0609

**LOVELAND OFFICE**  
 1635 Foxtrail Drive, Suite 204  
 Loveland, Colorado 80538  
 Phone 970-776-4331

DRAFTED BY:	LMO	CHECKED BY:	JRS	SHEET NO:
DATE DRAFTED:	3/21/16	DATE SURVEYED:	1/19/16	<b>3</b>
REVISED:		FILE NAME:	15-73	3 OF 3