

The Road to Excellence Starts with Safety

Sold To #: 345242		Ship To #: 3732799		Quote #:		Sales Order #: 0903261697					
Customer: NOBLE ENERGY INC E-BUSINESS				Customer Rep:							
Well Name: UPRR		Well #: Wells 1		API/UWI #:							
Field:	City (SAP): GILL	County/Parish: WELD		State: COLORADO							
Legal Description:											
Contractor: UNKNOWN				Rig/Platform Name/Num: WORKOVER RIG							
Job BOM: 7528											
Well Type: GAS											
Sales Person: HALAMERICA\HB45834				Srv Supervisor:							
Job											
Formation Name											
Formation Depth (MD)		Top		Bottom							
Form Type				BHST		150 degF					
Job depth MD		230ft		Job Depth TVD							
Well Data											
Description	New / Used	Size in	ID in	Weight lbm/ft	Thread	Grade	Top MD ft	Bottom MD ft	Top TVD ft	Bottom TVD ft	
Tubing		2.875	2.441	6.4			0	230	0	230	
Fluid Data											
Stage/Plug #: 1											
Fluid #	Stage Type	Fluid Name			Qty	Qty UoM	Mixing Density lbm/gal	Yield ft3/sack	Mix Fluid Gal	Rate bbl/min	Total Mix Fluid Gal
1	Plug #1 @ 230 FT	HALCEM (TM) SYSTEM			107	sack	15.8	1.15			5
5 Gal		FRESH WATER									
Fluid #	Stage Type	Fluid Name			Qty	Qty UoM	Mixing Density lbm/gal	Yield ft3/sack	Mix Fluid Gal	Rate bbl/min	Total Mix Fluid Gal
1	Plug #1	HALCEM (TM) SYSTEM			15.5	sack	15.8	1.15			5
5 Gal		FRESH WATER									
Cement Left In Pipe											
Cement Left In Pipe		Amount		Reason				Shoe Joint			
Comment APPROX 10 BBLS CEMENT TO SURFACE											

HALLIBURTON

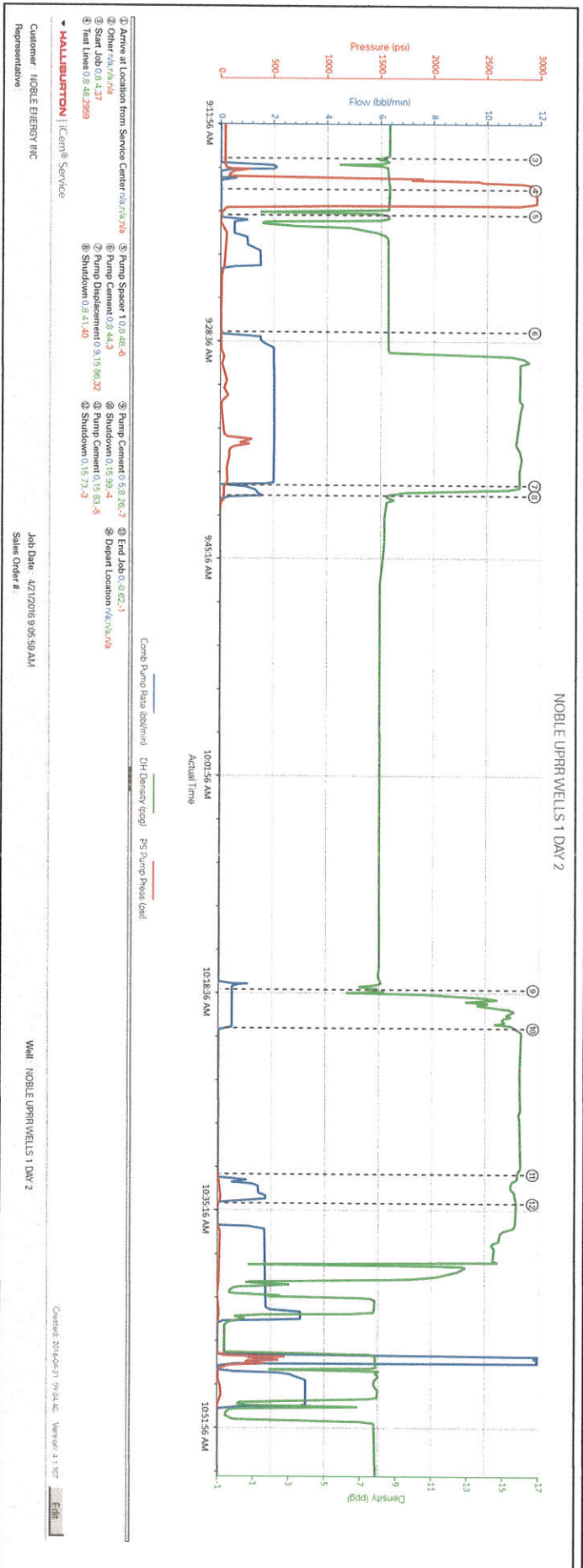
Customer: NOBLE ENERGY INC
Job: NOBLE UPRR WELLS 1 DAY 2
Case: NOBLE UPRR WELLS 1 DAY 2

BOP.

Event	9	Pump Cement	Pump Cement	4/21/2016	10:18:30	COM6	0.50	8.26	-7.00	TOP OUT WELL WITH 2.5 BBLs (13 SKS) G CEMENT MIXED AT 15.8 PPG. DENSITY VERIFIED BY SCALE.
Event	10	Shutdown	Shutdown	4/21/2016	10:21:27	COM6	0.00	15.99	-4.00	
Event	11	Pump Cement	Pump Cement	4/21/2016	10:32:39	COM6	0.00	15.83	-5.00	TOP OUT WITH 1/2 BBL (2.5 SKS) G CEMENT MIXED AT 15.8.
Event	12	Shutdown	Shutdown	4/21/2016	10:34:53	COM6	0.00	15.73	-3.00	SHUTDOWN. PUMP 5 BBLs (27.5 SKS) CEMENT TO PIT. WAIT ON CEMENT FOR 1 HOUR.
Event	13	End Job	End Job	4/21/2016	12:02:36	COM6	0.00	-0.62	-1.00	CEMENT AT SURFACE NOT FALLING BACK. HELD PRE RIG DOWN SAFETY MEETING WITH CREW PRIOR TO RIGGING DOWN EQUIPMENT.
Event	14	Depart Location	Depart Location	4/21/2016	12:30:00	USER				JOURNEY MGMT PRIOR TO LEAVING

2.0 Attachments

2.1 NOBLE UPRR WELLS 1 DAY 2-Custom Results.png



The Road to Excellence Starts with Safety

Sold To #: 345242		Ship To #: 2142249		Quote #:		Sales Order #: 0903258937				
Customer: NOBLE ENERGY INC E-BUSINESS				Customer Rep: TONY MATHIAS						
Well Name: UPRR Wells			Well #: 1			API/UWI #:				
Field:		City (SAP): PLATTEVILLE		County/Parish: WELD			State: COLORADO			
Legal Description:										
Contractor: UNKNOWN				Rig/Platform Name/Num: WORKOVER RIG						
Job BOM: 7528										
Well Type: GAS										
Sales Person: HALAMERICA\HB45834				Srvc Supervisor: Joseph Fantasia						
Job										
Formation Name										
Formation Depth (MD)		Top		Bottom						
Form Type				BHST		150 degF				
Job depth MD		4000ft		Job Depth TVD						
Well Data										
Description	New / Used	Size in	ID in	Weight lbm/ft	Thread	Grade	Top MD ft	Bottom MD ft	Top TVD ft	Bottom TVD ft
Fluid Data										
Stage/Plug #: 1										
Fluid #	Stage Type	Fluid Name	Qty	Qty UoM	Mixing Density lbm/gal	Yield ft ³ /sack	Mix Fluid Gal	Rate bbl/min	Total Mix Fluid Gal	
1	200 FT Plug @ 4000 FT	HALCEM (TM) SYSTEM	95	sack	15.8	1.15			5	
4.99 Gal		FRESH WATER								
Fluid #	Stage Type	Fluid Name	Qty	Qty UoM	Mixing Density lbm/gal	Yield ft ³ /sack	Mix Fluid Gal	Rate bbl/min	Total Mix Fluid Gal	
2	Displace	Water	20	bbl	8.33					
4.99 Gal		FRESH WATER								
Fluid #	Stage Type	Fluid Name	Qty	Qty UoM	Mixing Density lbm/gal	Yield ft ³ /sack	Mix Fluid Gal	Rate bbl/min	Total Mix Fluid Gal	
3	Plug #2 @ 497 FT	HALCEM (TM) SYSTEM	405	sack	15.8	1.15			5	
4.99 Gal		FRESH WATER								
Cement Left In Pipe	Amount				Reason					
Comment										

2.0 Real-Time Job Summary

2.1 Job Event Log

Type	Seq. No.	Activity	Graph Label	Date	Time	Source	Combined Pump Rate (bbl/min)	Downhole Density (ppg)	Pass-Side Pump Pressure (psi)	Comments
Event	1	Arrive at Location from Service Center	Arrive at Location from Service Center	4/20/2016	09:00:00	USER				CALL OUT AT 0500. REQUESTED ON LOCATION AT 0900. ARRIVE AT LOCATION AT 0900. HELD SITE ASSESSMENT AND PRE RIG UP SAFETY MEETING WITH CREW PRIOR TO RIGGING UP EQUIPMENT,
Event	2	Other	Other	4/20/2016	09:15:00	USER				WATER TEST - PH 7... CHLORIDES 0 ... TEMP 55
Event	3	Start Job	Start Job	4/20/2016	09:49:22	COM6	0.00	8.48	36.00	HELD PRE JOB SAFETY MEETING WITH ALL PRESENT PERSONNEL PRIOR TO STARTING JOB. 2.875" TUBING SET AT 4000'. 10 INCH OPEN HOLE. ESTIMATED CEMENT HEIGHT OF 200 FT BASED ON GIVEN 10 INCH OPEN HOLE.
Event	4	Test Lines	Test Lines	4/20/2016	09:51:35	COM6	0.00	8.52	3033.00	PRESSURE TEST LINES TO 3000 PSI.
Event	5	Pump Spacer 1	Pump Spacer 1	4/20/2016	09:55:10	COM6	0.00	8.64	8.00	PUMP 3 BBLs WATER TO ESTABLISH CIRCULATION. 2 BBLs/MIN AT 400 PSI.
Event	6	Pump Cement	Pump Cement	4/20/2016	10:02:05	COM6	2.10	15.83	466.00	PUMP 19 BBLs (95 SKS) G CEMENT MIXED AT 15.8 PPG. DENSITY VERIFIED BY SCALE.
Event	7	Pump Displacement	Pump Displacement	4/20/2016	10:08:02	COM6	0.40	16.04	215.00	DISPLACE USING 20 BBLs

HALLIBURTON

Customer: NOBLE ENERGY INC
 Job: NOBLE UPRR WELLS 1
 Case: NOBLE UPRR WELLS 1

WATER TO BALANCE.									
Event	8	Shutdown	Shutdown	4/20/2016	10:14:26	USER	0.00	6.84	-5.00
SHUTDOWN WHILE RIG PULLS TO 497'.									
Event	9	Pump Spacer 1	Pump Spacer 1	4/20/2016	11:24:24	COM6	0.00	7.92	-4.00
PUMP 20 BBLs WATER TO FILL WELL AND ESTABLISH CIRCULATION.									
Event	10	Pump Cement	Pump Cement	4/20/2016	11:39:02	COM6	2.20	15.73	10.00
PUMP 83 BBLs (405 SKS) G CEMENT MIXED AT 15.8 PPG. DENSITY VERIFIED BY SCALE. GOOD RETURNS THROUGHOUT. NO CEMENT TO SURFACE.									
Event	11	Pump Displacement	Pump Displacement	4/20/2016	12:01:58	COM6	3.00	15.57	58.00
DISPLACE 1 BBL WATER TO CLEAR LINES.									
Event	12	End Job	End Job	4/20/2016	12:14:30	USER	0.00	-0.69	-3.00
HELD PRE RIG DOWN SAFETY MEETING PRIOR TO RIGGING DOWN EQUIPMENT.									
Event	13	Depart Location	Depart Location	4/20/2016	13:00:00	USER			
JOURNEY MGMT PRIOR TO LEAVING.									

3.0 Attachments

3.1 NOBLE UPRR WELLS 1 -Custom Results.png

