

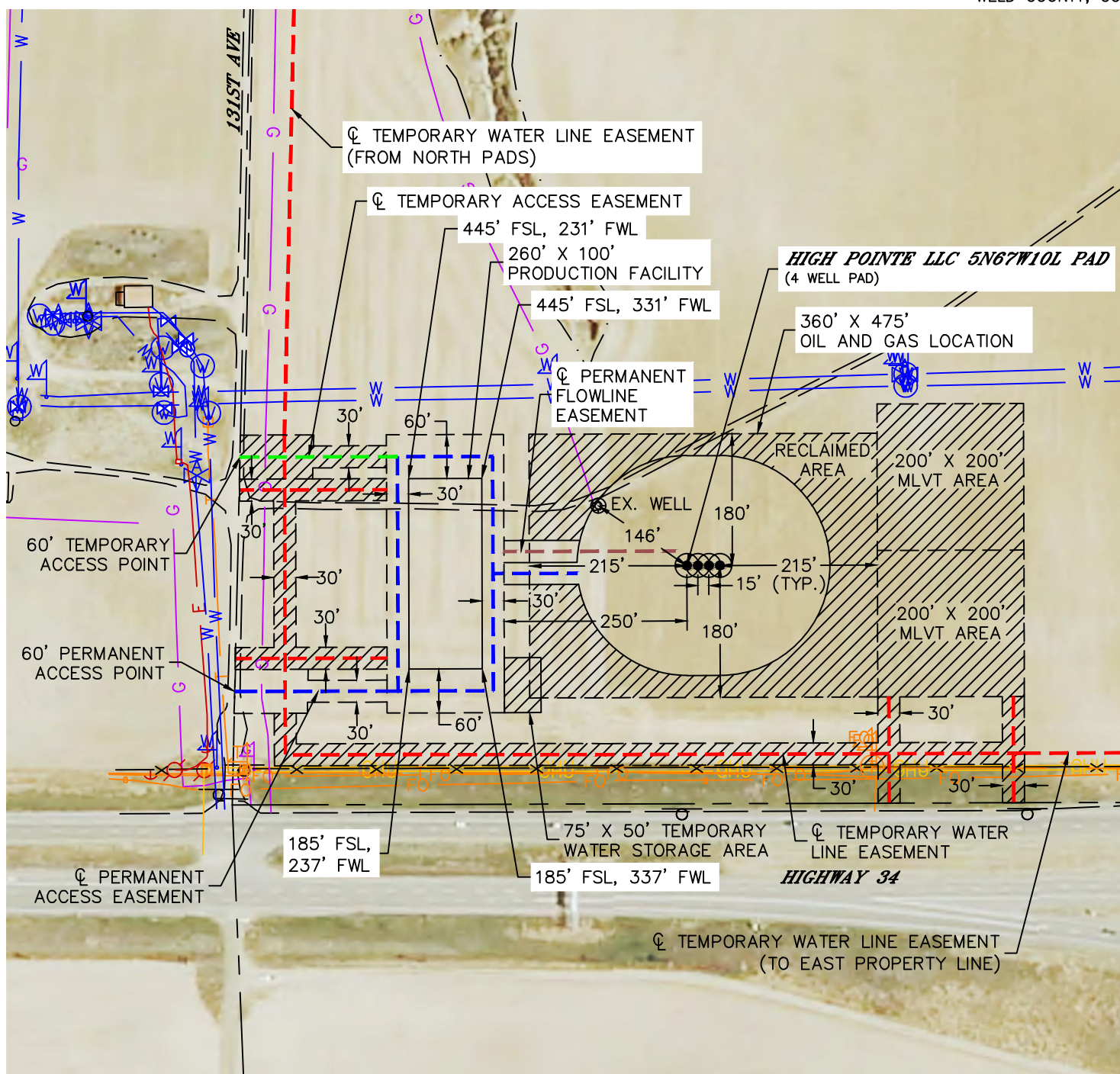


Lat40°, Inc. 6250 W. 10th Street, Unit 2, Greeley, CO 970-515-5294

# PROPOSED SCALED FACILITY DRAWING

HIGH POINTE LLC 5N67W10L PAD

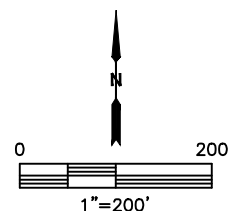
SECTION: 10  
TOWNSHIP: 5N  
RANGE: 67W  
6TH. P.M.  
WELD COUNTY, CO



## LEGEND

- PROPOSED WELL HEAD
- T TANK BATTERY
- W WATER TANK
- W WATER VAULT
- S SEPARATOR
- ECD
- M METER
- VRU- VAPOR RECOVERY UNIT

TOTAL DISTURBED AREA OF LOCATION: ±9.0 ACRES  
TOTAL SIZE OF LOCATION AFTER RECLAMATION: ±3.7 ACRES



DATE: 12/21/2015  
PROJECT#: 2015119