

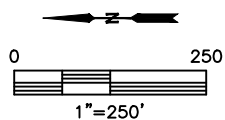
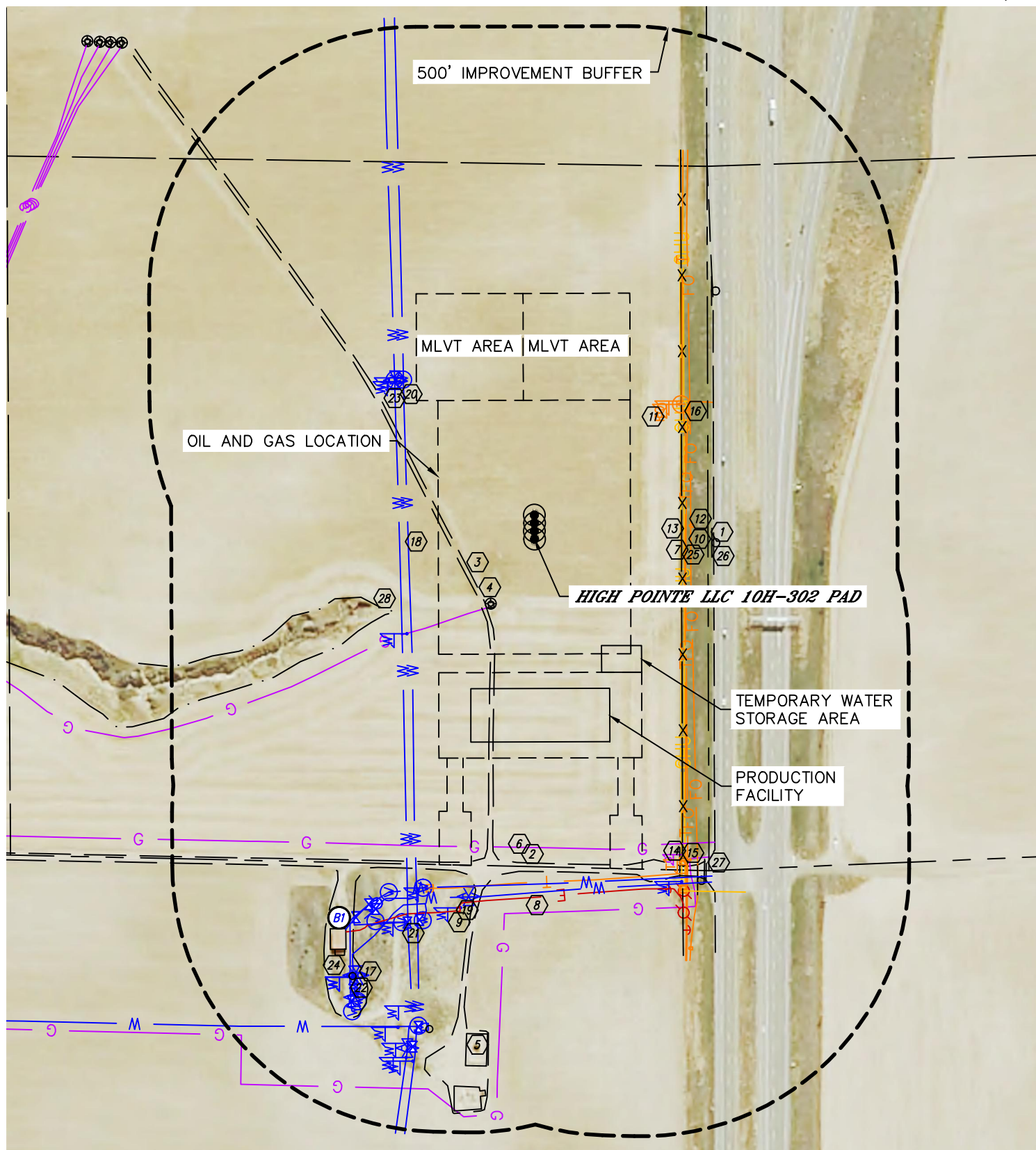


Lat40°, Inc. 6250 W. 10th Street, Unit 2, Greeley, CO 970-515-5294

LOCATION DRAWING

HIGH POINTE LLC 5N67W10L PAD

SECTION: 10
TOWNSHIP: 5N
RANGE: 67W
6TH. P.M.
WELD COUNTY, CO





Lat40°, Inc. 6250 W. 10th Street, Unit 2, Greeley, CO 970-515-5294

LOCATION DRAWING

HIGH POINTE LLC 5N67W10L PAD

SECTION: 10
TOWNSHIP: 5N
RANGE: 67W
6TH. P.M.
WELD COUNTY, CO

IMPROVEMENTS:
(MEASURED FROM THE PROPOSED HIGH POINTE LLC 10H-302 WELL LOCATION)

- BU1 NO BUILDING UNITS WITHIN 500' IMPROVEMENT BUFFER
- B1 BUILDING B1 810' NW
- 1 HIGHWAY 34 336' S
- 2 131ST AVENUE 607' W
- 3 ROAD 136', 634' & 693' NW
- 4 EX. WELL HEAD 146' NW
- 5 EX. PRODUCTION EQUIPMENT 931' & 1031' NW (PDC ENERGY)
- 6 GAS LINE LOCATES ±577' W (DCP), ±155' NW (PDC ENERGY), ±699' W (KERR MCGEE)
- 7 OVERHEAD UTILITY LINE 275' S
- 8 ELECTRIC LINE LOCATES ±669' W
- 9 ELECTRIC PANEL 704' NW
- 10 FIBER OPTIC LINE LOCATES ±283' & ±293' S
- 11 FIBER OPTIC MARKER 371' & 378' SE
- 12 FIBER OPTIC VAULT 391' S, 817' SW
- 13 TELEPHONE LINE LOCATES ±282' S, ±644' W
- 14 TELEPHONE MARKER 667' SW
- 15 TELEPHONE PEDESTAL 664', 711' & 713' SW, 681' NW
- 16 TELEPHONE MANHOLE 373' SE
- 17 COMMUNICATION TOWER 886' & 938' NW
- 18 WATER LINE LOCATES ±236' & ±253' N, ±646' & ±680' W, ±712' & ±939' NW
- 19 WATER MAKER 297', 681', 704', 757', 889', 904', 949', 973', 1000' & 1004' NW, 388' & 392' NE, 698' SW
- 20 WATER MANHOLE 387' & 397' NE, 685', 715', 743', 744', 759', 767', 926', 937' & 947' NW
- 21 WATER VALVE 745', 750', 751', 754', 756', 783', 931' & 939' NW
- 22 WATER VAULT 885', 891', 897', 903', 909' & 928' NW
- 23 AIR VALVE 396' NE, 680', 881', 884', 921' & 982' NW
- 24 CONCRETE STRUCTURE 844' NW
- 25 FENCE 276' S
- 26 SIGN 340' S, 571' SE, 663' & 708' SW
- 27 PIPE 679' SW
- 28 RAVINE 294' NW