

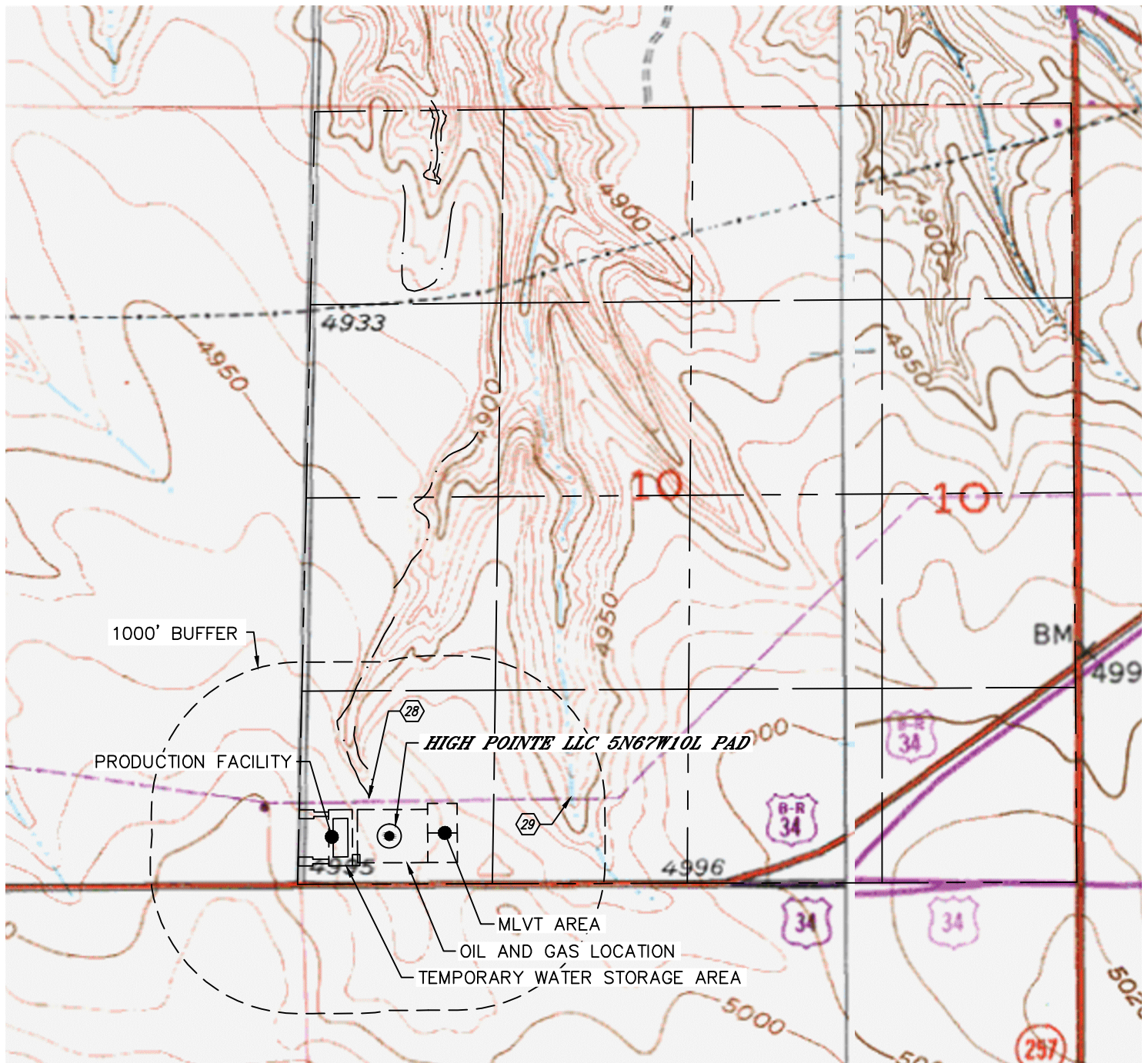


Lat40°, Inc. 6250 W. 10th Street, Unit 2, Greeley, CO 970-515-5294

# HYDROLOGY MAP

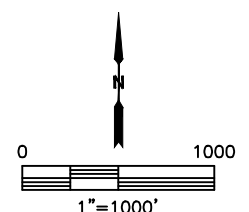
HIGH POINTE LLC 5N67W10L PAD

SECTION: 10  
TOWNSHIP: 5N  
RANGE: 67W  
6TH. P.M.  
WELD COUNTY, CO



DISTANCES MEASURED FROM THE EDGE OF THE OIL AND GAS LOCATION.

- ②⑧ RAVINE 81' N
- ②⑨ APPROXIMATE BOTTOM OF RAVINE 771' NE



NEAREST DOWN GRADIENT SURFACE WATER: RAVINE 81' N

DATE: 12/21/2015  
PROJECT#: 2015119