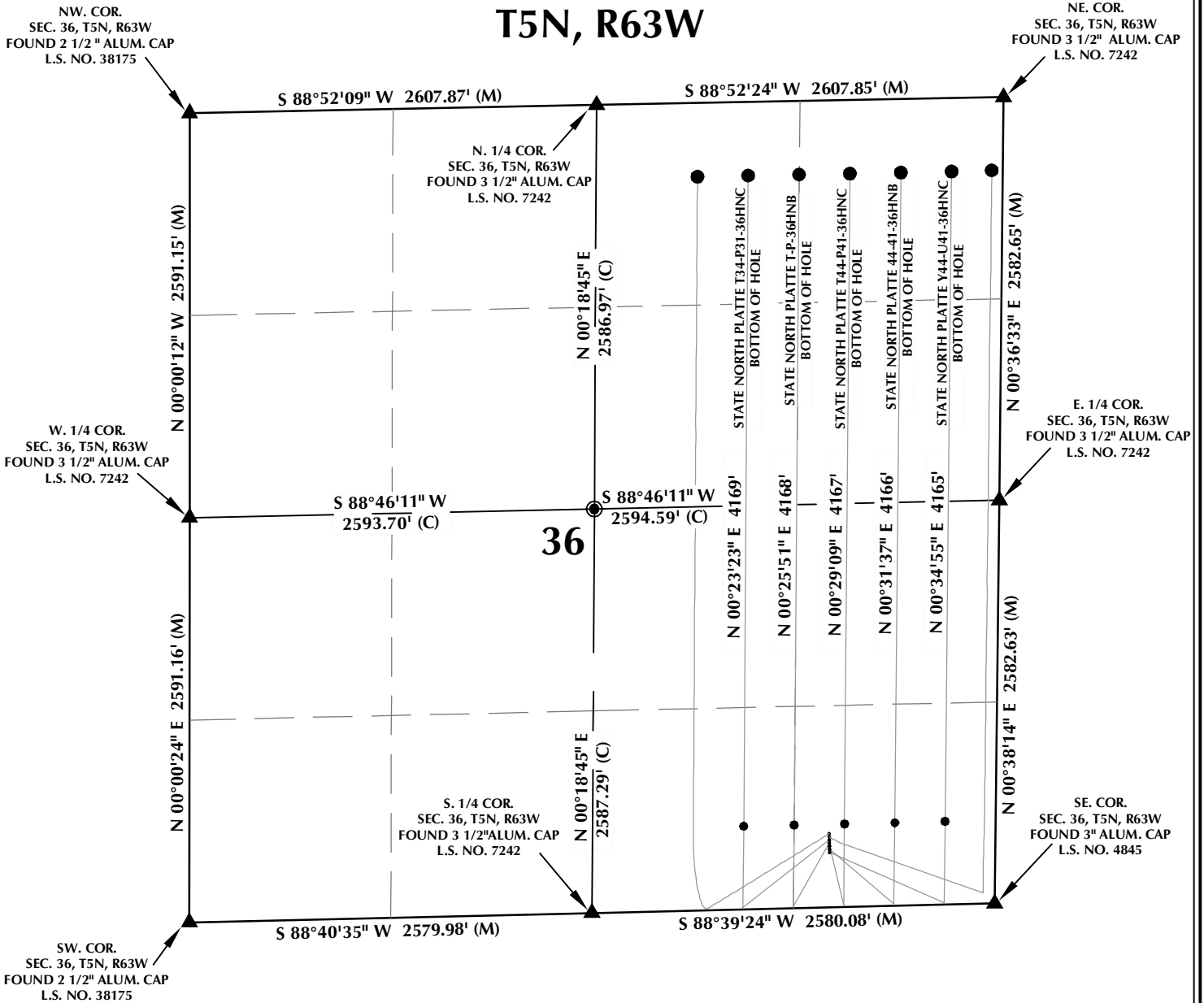


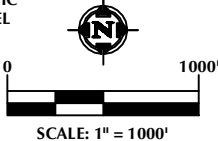
# STATE NORTH PLATTE T-36 T5N, R63W



## WELL NOTES:

STATE NORTH PLATTE T34-P31-36HNC  
SURFACE: 430' FSL, 1064' FEL  
LATITUDE: 40.350250°  
LONGITUDE: -104.379429°  
STATE NORTH PLATTE T-P-36HNB  
SURFACE: 410' FSL, 1063' FEL  
LATITUDE: 40.350195°  
LONGITUDE: -104.379427°  
STATE NORTH PLATTE T44-P41-36HNC  
SURFACE: 390' FSL, 1062' FEL  
LATITUDE: 40.350141°  
LONGITUDE: -104.379425°  
STATE NORTH PLATTE 44-41-36HNB  
SURFACE: 370' FSL, 1062' FEL  
LATITUDE: 40.350086°  
LONGITUDE: -104.379427°

STATE NORTH PLATTE Y44-U41-36HNC  
SURFACE: 350' FSL, 1061' FEL  
LATITUDE: 40.350031°  
LONGITUDE: -104.379425°  
STATE NORTH PLATTE 34-31-36HNB  
SURFACE: 470' FSL, 1065' FEL  
LATITUDE: 40.350361°  
LONGITUDE: -104.379429°  
STATE NORTH PLATTE Y-U-36HC  
SURFACE: 450' FSL, 1064' FEL  
LATITUDE: 40.350304°  
LONGITUDE: -104.379428°



## NOTES:

- ▲ INDICATES FOUND SECTION CORNER
- INDICATES CALCULATED CORNER
- BASIS OF BEARING DERIVED FROM COLORADO COORDINATE SYSTEM 1983 NORTH ZONE UNLESS OTHERWISE NOTED.
- ALL MEASURED DISTANCES ARE GRID.
- COMBINED SCALE FACTOR: .99974441
- WELL FOOTAGES ARE MEASURED AT RIGHT ANGLES TO THE SECTION LINES.

## WELL PAD - STATE NORTH PLATTE T-36

MULTI-WELL PLAN  
STATE NORTH PLATTE T34-P31-36HNC,  
STATE NORTH PLATTE T-P-36HNB,  
STATE NORTH PLATTE T44-P41-36HNC,  
STATE NORTH PLATTE 44-41-36HNB &  
STATE NORTH PLATTE Y44-U41-36HNC  
LOCATED IN SECTION 36  
T5N, R63W, 6TH P.M.  
WELD COUNTY, COLORADO

**BONANZA CREEK**  
410 17th Street, Suite 1400  
Denver, Colorado 80202



## CONSULTING, LLC

SHERIDAN OFFICE  
2155 North Main Street  
Sheridan, Wyoming 82801  
Phone 307-674-0609

LOVELAND OFFICE  
1635 Foxtrail Drive, Suite 204  
Loveland, Colorado 80538  
Phone 970-776-4331

DRAFTED BY:	LMO	CHECKED BY:	BJR	SHEET NO:
DATE DRAFTED:	1/7/14	DATE SURVEYED:	12/10/13	1
REVISED:		FILE NAME:	13-94	1 OF 2

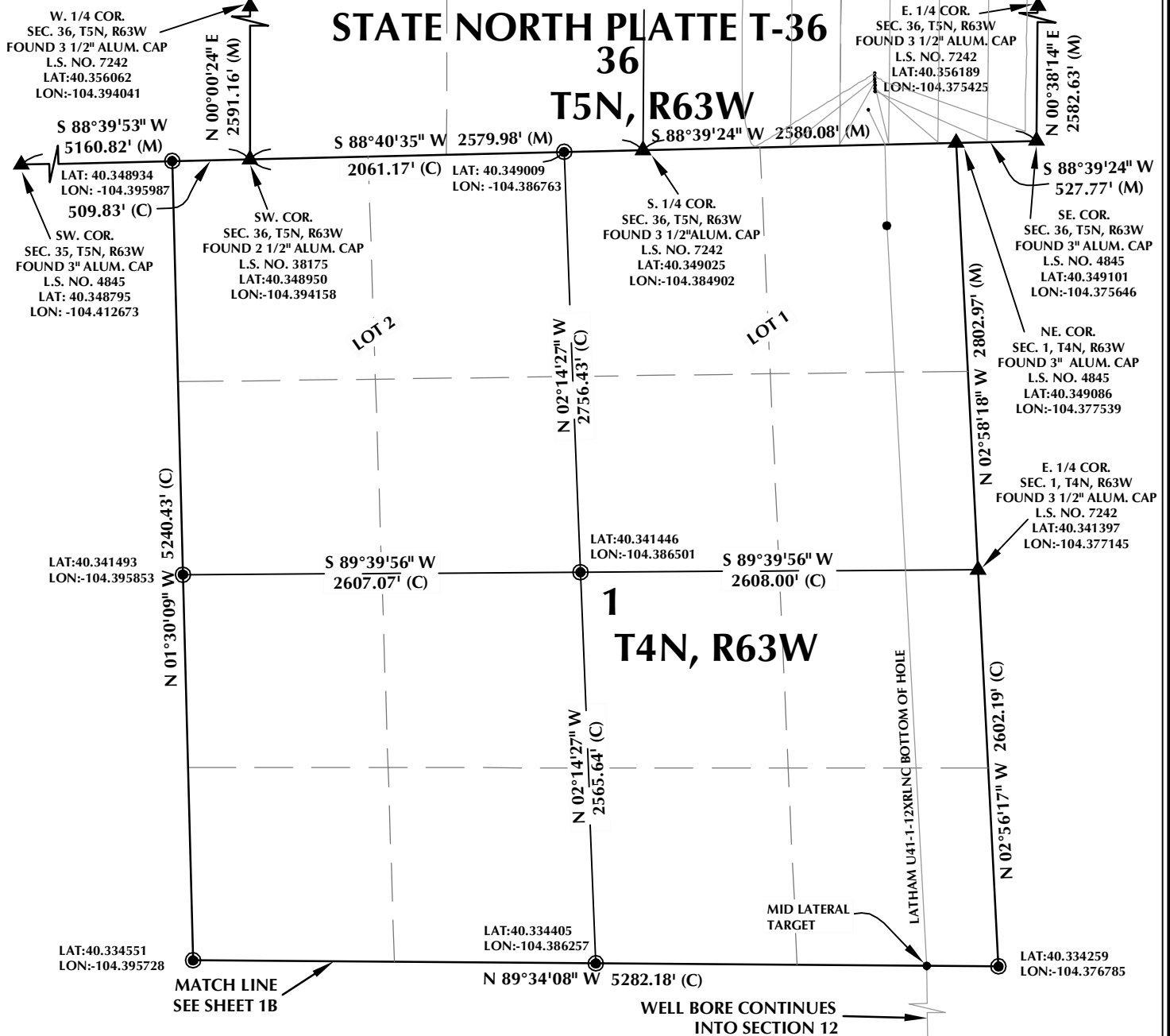
# STATE NORTH PLATTE T-36

36

T5N, R63W

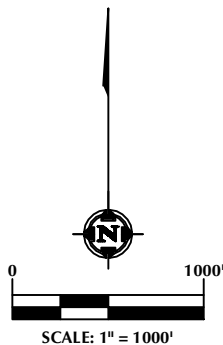
1

T4N, R63W



## NOTES:

1. ▲ INDICATES FOUND SECTION CORNER
2. ● INDICATES CALCULATED CORNER
3. BASIS OF BEARING DERIVED FROM COLORADO COORDINATE SYSTEM 1983 NORTH ZONE UNLESS OTHERWISE NOTED.
4. ALL MEASURED DISTANCES ARE GRID.  
COMBINED SCALE FACTOR: .99974499
5. WELL FOOTAGES ARE MEASURED AT RIGHT ANGLES TO THE SECTION LINES.



## WELL PAD - STATE NORTH PLATTE T-36

MULTI-WELL PLAN  
LATHAM U41-1-12XRLNC  
LOCATED IN  
SECTION 36, T5N, R63W, 6TH P.M.  
SECTIONS 1 & 12, T4N, R63W, 6TH P.M.  
WELD COUNTY, COLORADO

**BONANZA CREEK**  
410 17th Street, Suite 1400  
Denver, Colorado 80202



## CONSULTING, LLC

SHERIDAN OFFICE  
1095 Saberton Avenue  
Sheridan, Wyoming 82801  
Phone 307-674-0609

LOVELAND OFFICE  
1635 Foxtrail Drive, Suite 204  
Loveland, Colorado 80538  
Phone 970-776-4331

DRAFTED BY:	LMO	CHECKED BY:	JRS	SHEET NO:
DATE DRAFTED:	9/25/15	DATE SURVEYED:	9/24/15	<b>1A</b>
REVISED:	2/1/16	FILE NAME:	13-94	1A OF 3

# STATE NORTH PLATTE T-36

## T4N, R63W

N 89°34'08" W 5282.18' (C)

LAT: 40.334551  
LON: -104.395728

LAT: 40.334405  
LON: -104.386257

LAT: 40.334259  
LON: -104.376785

MID LATERAL  
TARGET

N 00°29'59" W  
2649.49' (C)

12

LAT: 40.327286  
LON: -104.395804

N 89°30'38" W  
2652.23' (C)

LAT: 40.327132  
LON: -104.386293

N 89°30'38" W  
2652.23' (C)

LAT: 40.326978  
LON: -104.376782

N 00°15'35" W 5293.28' (C)

N 00°29'59" W  
2649.49' (C)

N 00°44'22" W 5304.79' (C)

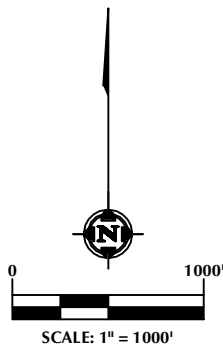
LATHAM U41-1-12XRLNC BOTTOM OF HOLE

LAT: 40.319859  
LON: -104.386329

N 89°27'10" W 5326.74' (C)

LAT: 40.319697  
LON: -104.376780

SW. COR.  
SEC. 12, T4N, R63W  
FOUND 3" ALUM. CAP  
L.S. NO. 4845  
LAT: 40.320021  
LON: -104.395879



### NOTES:

1. ▲ INDICATES FOUND SECTION CORNER
2. ● INDICATES CALCULATED CORNER
3. BASIS OF BEARING DERIVED FROM COLORADO COORDINATE SYSTEM 1983 NORTH ZONE UNLESS OTHERWISE NOTED.
4. ALL MEASURED DISTANCES ARE GRID.  
COMBINED SCALE FACTOR: .99974499
5. WELL FOOTAGES ARE MEASURED AT RIGHT ANGLES TO THE SECTION LINES.

### WELL PAD - STATE NORTH PLATTE T-36

MULTI-WELL PLAN  
LATHAM U41-1-12XRLNC  
LOCATED IN  
SECTION 36, T5N, R63W, 6TH P.M.  
SECTIONS 1 & 12, T4N, R63W, 6TH P.M.  
WELD COUNTY, COLORADO

**BONANZA CREEK**  
410 17th Street, Suite 1400  
Denver, Colorado 80202



### CONSULTING, LLC

SHERIDAN OFFICE  
1095 Saberton Avenue  
Sheridan, Wyoming 82801  
Phone 307-674-0609

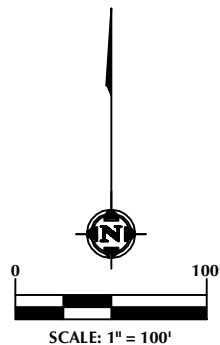
LOVELAND OFFICE  
1635 Foxtrail Drive, Suite 204  
Loveland, Colorado 80538  
Phone 970-776-4331

DRAFTED BY:	LMO	CHECKED BY:	JRS	SHEET NO:
DATE DRAFTED:	9/25/15	DATE SURVEYED:	9/24/15	<b>1B</b>
REVISED:	2/1/16	FILE NAME:	13-94	1B OF 3

# STATE NORTH PLATTE T-36

- EXISTING WELL: STATE NORTH PLATTE 34-31-36HNB
- EXISTING WELL: STATE NORTH PLATTE Y-U-36HC
- STATE NORTH PLATTE T34-P31-36HNC
- STATE NORTH PLATTE T-P-36HNB
- STATE NORTH PLATTE T44-P41-36HNC
- STATE NORTH PLATTE 44-41-36HNB
- STATE NORTH PLATTE Y44-U41-36HNC

LATHAM U41-1-12XRLNC ●



## NOTES:

1. ▲ INDICATES FOUND SECTION CORNER
2. ● INDICATES CALCULATED CORNER
3. BASIS OF BEARING DERIVED FROM COLORADO COORDINATE SYSTEM 1983 NORTH ZONE UNLESS OTHERWISE NOTED.
4. ALL MEASURED DISTANCES ARE GRID.  
COMBINED SCALE FACTOR: .99974499
5. WELL FOOTAGES ARE MEASURED AT RIGHT ANGLES TO THE SECTION LINES.

## WELL PAD - STATE NORTH PLATTE T-36

MULTI-WELL PLAN  
LATHAM U41-1-12XRLNC  
LOCATED IN  
SECTION 36, T5N, R63W, 6TH P.M.  
SECTIONS 1 & 12, T4N, R63W, 6TH P.M.  
WELD COUNTY, COLORADO

 **BONANZA  
CREEK**  
410 17th Street, Suite 1400  
Denver, Colorado 80202



## CONSULTING, LLC

SHERIDAN OFFICE  
1095 Saberton Avenue  
Sheridan, Wyoming 82801  
Phone 307-674-0609

LOVELAND OFFICE  
1635 Foxtrail Drive, Suite 204  
Loveland, Colorado 80538  
Phone 970-776-4331

DRAFTED BY:	LMO	CHECKED BY:	REM	SHEET NO:
DATE DRAFTED:	9/25/15	DATE SURVEYED:	9/24/15	<b>2</b>
REVISED:		FILE NAME:	13-94	2 OF 3