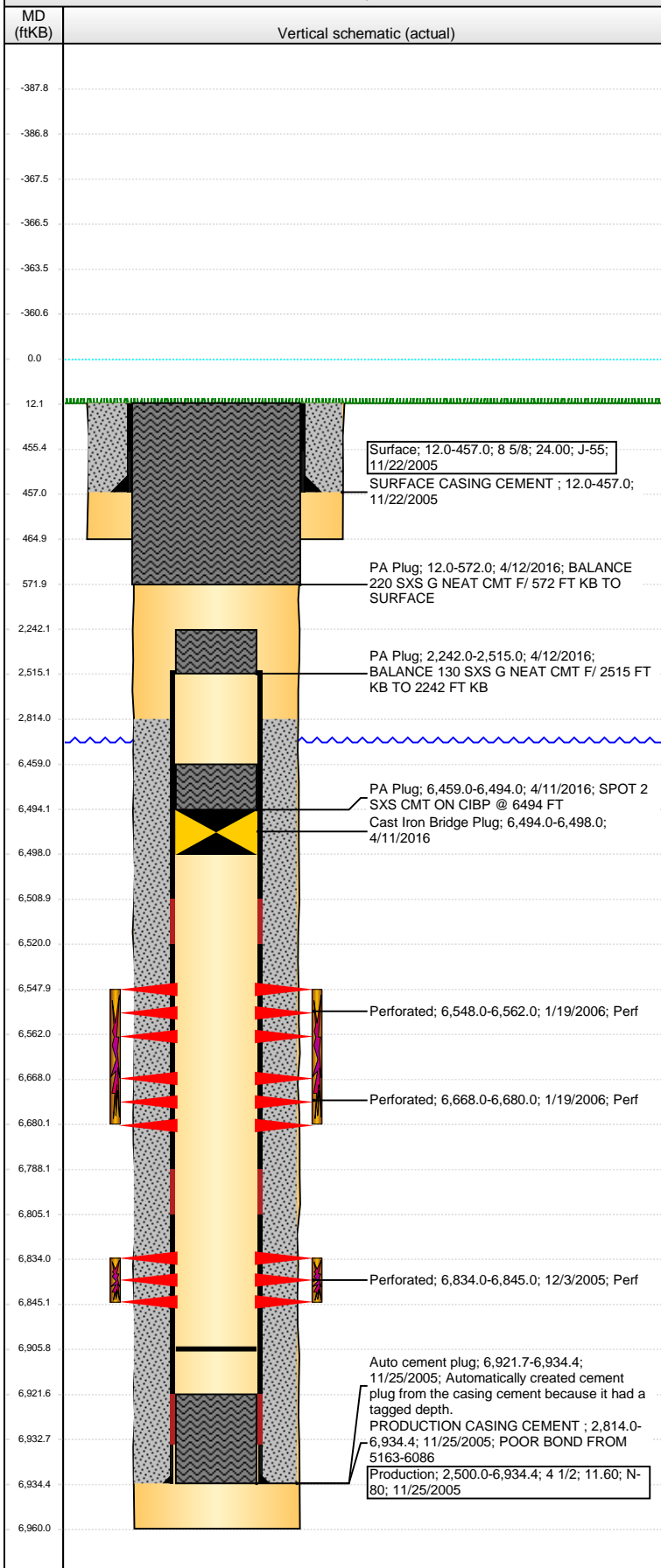


Wellbore Schematic Input Report

Well Name: ALLES A12-16

VERTICAL - ORIGINAL HOLE, 5/2/2016 7:55:34 AM



Well Header								
API 05-123-23276		Business Unit DJ BASIN		District 15		Well Config VERTICAL		
Original KB Elevation (ft) 4,686		KB - GL / MSL (ftKB) 12.00		Spud Date 11/21/2005		P & A Date 4/11/2016		
Comment								
Directions To Well								
Congressional Location								
Quarter 1	Quarter 2	Quarter 3	Quarter 4	Section	Township	Twnshp N...	Range	Rng E/W Dir
		SE	SE	12	6	N	64	W
Bottom Hole Location								
North-South Distance (ft)		From N or S Line		East-West Distance (ft)			From E or W Line	
Plug Back Total Depths								
Date	Depth (ftKB)	Method			Com			
11/25/2005	6,921.7	CASING TALLY			SHOE W/ LATCH DOWN BAFFLE			
12/3/2005	6,900.0	CASED HOLE LOG			DEPTH LOGGER FROM CBL			
2/21/2006	6,906.0	TAG			CLEAN OUT & LAND TBG			
Wellbore Sections								
Section Des			Size (in)		Act Top, MD (ftKB)		Act Btm, MD (ftKB)	
SURFACE			12 1/4		12.0		465.0	
PRODUCTION			7 7/8		465.0		6,960.0	
Zone Statuses								
Zone Name	Status Date	Status	Fluid Type	Job	Prod Method			
NIOBRARA	1/21/2006	PR	Water	DRILLING/CO...	Flowing			
NIOBRARA	7/20/2009	PR						
NIOBRARA	4/11/2016	P&A		ABANDON WE...				
CODELL	1/21/2006	PR	Water	DRILLING/CO...	Flowing			
CODELL	7/20/2009	PR						
CODELL	4/11/2016	P&A		ABANDON WE...				
Casing Strings								
Surface, 457.0ftKB								
Casing Description		Run Date	OD (in)	Wt/Len (l...	Grade	Top, MD (ft...	MD (ftKB)	
Surface		11/22/2005	8 5/8	24.00	J-55	12.0	457.0	
Production, 6,934.4ftKB								
Casing Description		Run Date	OD (in)	Wt/Len (l...	Grade	Top, MD (ft...	MD (ftKB)	
Production		11/25/2005	4 1/2	11.60	N-80	12.0	6,934.4	
Cement								
Description				Top Depth (ftKB)		Bottom Depth (ftKB)		
SURFACE CASING CEMENT				12.0		457.0		
Description				Top Depth (ftKB)		Bottom Depth (ftKB)		
PRODUCTION CASING CEMENT				2,814.0		6,934.4		
Description				Top Depth (ftKB)		Bottom Depth (ftKB)		
PA Plug				6,459.0		6,494.0		
Description				Top Depth (ftKB)		Bottom Depth (ftKB)		
PA Plug				2,242.0		2,515.0		
Description				Top Depth (ftKB)		Bottom Depth (ftKB)		
PA Plug				12.0		572.0		
Tubing Strings								
Tubing Description		Run Date	String...	ID (in)	Wt (lb/ft)	Grade	Len (ft)	Set De...
Tubing		2/22/2006	2 3/8		4.70		6,801.30	
Perforation Data								
Zone		Bnch/St g	Entered Shot Total	Top (ftKB)		Btm (ftKB)		Date
NIOBRARA, ORIGINAL HOLE		A	84	6,548.00		6,562.00		1/19/2006
NIOBRARA, ORIGINAL HOLE		B	72	6,668.00		6,680.00		1/19/2006
CODELL, ORIGINAL HOLE			44	6,834.00		6,845.00		12/3/2005
Stimulations & Treatments								
Date	Zone			Primary Job Type				
1/19/2006	CODELL, ORIGINAL HOLE			DRILLING/COMPLETION - ORIGINAL				
Technical Result			Tech Result Details			Tech Result Note		
Comment								

Well Name: ALLES A12-16

VERTICAL - ORIGINAL HOLE, 5/2/2016 7:55:37 AM

Stimulations & Treatments

Date 1/19/2006	Zone NIOBRARA, ORIGINAL HOLE	Primary Job Type DRILLING/COMPLETION - ORIGINAL
Technical Result	Tech Result Details	Tech Result Note
Comment		

Other In Hole

Run Date	Des	OD (in)	Top (ftKB)	Btm (ftKB)
4/11/2016	Cast Iron Bridge Plug	3.99	6,494.0	6,498.0

Logs

Date	Type	Top, MD (ftKB)	Btm, MD (ftKB)
11/25/2005	COMPENSATED DENSITY	3,000.0	6,939.0
11/25/2005	INDUCTION	457.0	6,959.0
12/3/2005	CBL/CCL/GR	2,700.0	6,897.0
2/16/2015	GYRO	10.0	6,700.0

