

T7N, R80W, 6th P.M. RAY RANCH 0780 3-16H

Landing Point Location  
300' FSL, 990' FEL N=1452052.24, E=2757610.41

GL0 Brass Cap 1939  
N=1451727.96, E=2758595.77 Elev. = 8223'

**Sandridge Exploration & Production, LLC**

Surface Location, RAY RANCH 0780 3-16H, located as shown in the NW1/4NE1/4 of Section 21, T7N, R80W, 6th P.M., Jackson County, Colorado.

**BASIS OF BEARINGS:**

US STATE PLANE 1983  
CO NORTH 0501 GRID

**BASIS OF ELEVATION**

SPOT ELEVATION AT THE NE CORNER OF SECTION 21, T7N, R80W, 6TH PM, TAKEN FROM THE COALMONT QUADRANGLE, USGS 7.5 MIN QUAD (TOPOGRAPHIC MAP) WITH SAID ELEVATION MARKED AS BEING 8223 FEET.

**SURFACE USE**

AGRICULTURAL/GRAZING

GRAPHIC SCALE 1"=1000'

1000 0 1000



I, RANDALL R. MILLER, BEING A REGISTERED LAND SURVEYOR IN THE STATE OF COLORADO, DO HEREBY CERTIFY THAT THE SURVEY MADE BY ME AND/OR UNDER MY DIRECT SUPERVISION AND THAT IS ACCURATE TO THE BEST OF MY KNOWLEDGE.

DATED THIS \_\_\_\_\_ DAY OF \_\_\_\_\_

RANDALL R. MILLER, COLORADO PLS. NO. 38084



**LEGEND**

90° SYMBOL  
FOUND CORNER  
PROPOSED WELL  
PROPOSED BHL/LPL

NAD 83 (TARGET BOTTOM HOLE)	NAD 83 (SURFACE LOCATION)
LATITUDE=40.584195°N	LATITUDE=40.569536°N
LONGITUDE=106.372438°W	LONGITUDE=106.375903°W
	PDOP=1.835
NAD 83 (LANDING POINT LOCATION)	
LATITUDE=40.571009°N	
LONGITUDE=106.372522°W	

**NORTH PARK ENGINEERING & CONSULTING, INC.**

P.O. BOX 395  
WALDEN, CO 80480  
(970) 723-3725

DATE OF FIELD WORK: JUL 22, 2015 DRAFTING COMPLETION: MAR 30, 2016  
SURVEYED BY: RAS DRAWN BY: TMC CHECKED BY: RRM

T7N, R80W, 6th P.M.

Aluminum Cap PLS 38084  
N=1457126.92, E=2756016.35

GL0 Brass Cap 1939  
PLS 17492 2008  
N=1457081.47, E=2753355.52

GL0 Brass Cap 1939  
N=1457172.68, E=2758675.95

Target Bottom Hole, RAY RANCH 0780 3-16H Located as shown in the NE1/4NE1/4 of Section 16, T7N, R80W, 6th P.M., Jackson County, Colorado.

## SandRidge Exploration & Production, LLC

### BASIS OF BEARINGS:

US STATE PLANE 1983  
CO NORTH 0501 GRID

### BASIS OF ELEVATION

SPOT ELEVATION AT THE NE CORNER OF SECTION 21, T7N, R80W, 6TH PM, TAKEN FROM THE COALMONT QUADRANGLE, USGS 7.5 MIN QUAD (TOPOGRAPHIC MAP) WITH SAID ELEVATION MARKED AS BEING 8223 FEET.

### SURFACE USE

AGRICULTURAL/GRAZING

GRAPHIC SCALE 1"=1000'



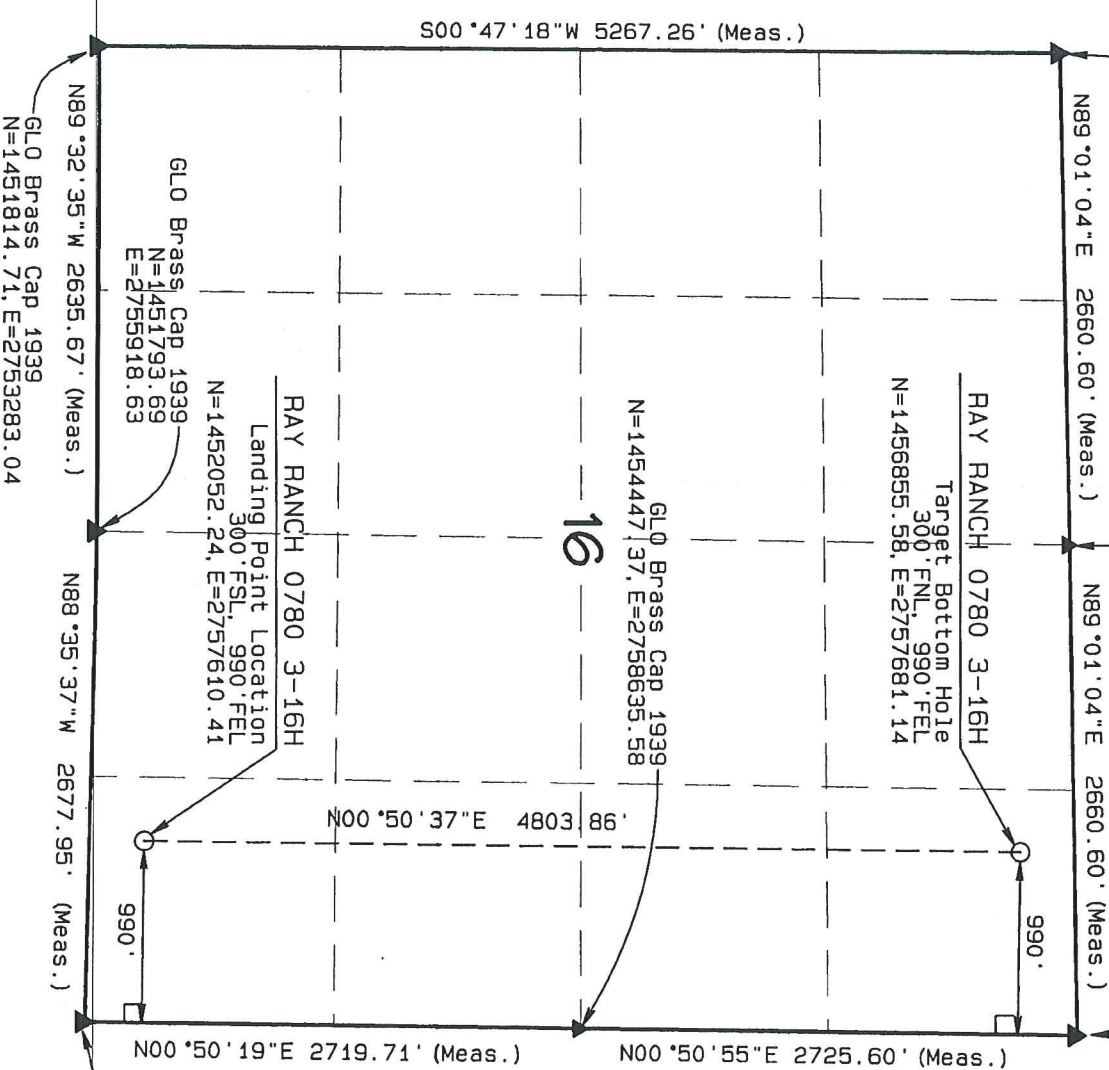
I, RANDALL R. MILLER, BEING A REGISTERED LAND SURVEYOR IN THE STATE OF COLORADO, DO HEREBY CERTIFY THAT THIS PLAT WAS MADE BY ME AND/OR UNDER MY CLOSE PERSONAL SUPERVISION AND IT IS ACCURATE TO THE BEST OF MY KNOWLEDGE AND BELIEF.

DATED THIS \_\_\_\_\_ DAY OF \_\_\_\_\_

RANDALL R. MILLER, COLORADO PLS NO. 38084



GL0 Brass Cap 1939  
N=1451727.96, E=2758595.77



### LEGEND

- 90° SYMBOL
- FOUND CORNER
- PROPOSED WELL
- PROPOSED BHL/LPL

NAD 83 (TARGET BOTTOM HOLE)	NAD 83 (SURFACE LOCATION)
LATITUDE=40.584195°N	LATITUDE=40.569536°N
LONGITUDE=106.372438°W	LONGITUDE=106.375903°W
	PDOP=1.835
NAD 83 (LANDING POINT LOCATION)	
LATITUDE=40.571009°N	
LONGITUDE=106.372522°W	

NORTH PARK ENGINEERING & CONSULTING, INC.

P.O. BOX 395  
WALDEN, CO 80480  
(970) 723-3725

DATE OF FIELD WORK: JUL 22, 2015 DRAWING COMPLETION: MAR 30, 2016  
SURVEYED BY: RAS DRAWN BY: TRH CHECKED BY: RRM