

T7N, R80W, 6th P.M.

Sandridge Exploration & Production, LLC

Multi-Well Plan
EVANS 0780 21 PAD
Sections 16 and 21, T7N, R80W, 6th P.M.,
Jackson County, Colorado.

BASIS OF BEARINGS:

US STATE PLANE 1983
CO NORTH 0501 GRID

BASIS OF ELEVATION

SPOT ELEVATION AT THE NE CORNER OF SECTION 21,
T7N, R80W, 6TH PM, TAKEN FROM THE COALMONT
QUADRANGLE, USGS 7.5 MIN QUAD (TOPOGRAPHIC MAP)
WITH SAID ELEVATION MARKED AS BEING 8223 FEET.

SURFACE USE

AGRICULTURAL/GRAZING

GRAPHIC SCALE 1"=2000'

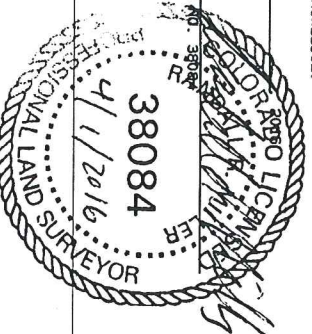
2000 0 2000



I RANDALL R. MILLER, BEING A REGISTERED LAND SURVEYOR IN THE
STATE OF COLORADO, DO HEREBY CERTIFY THAT THIS PLAT WAS
MADE BY ME AND/OR UNDER MY DIRECT SUPERVISION AND THAT IT
IS ACCURATE TO THE BEST OF MY KNOWLEDGE.

DATED THIS _____ DAY OF _____

RANDALL R. MILLER, COLORADO PLS. NO. 38084



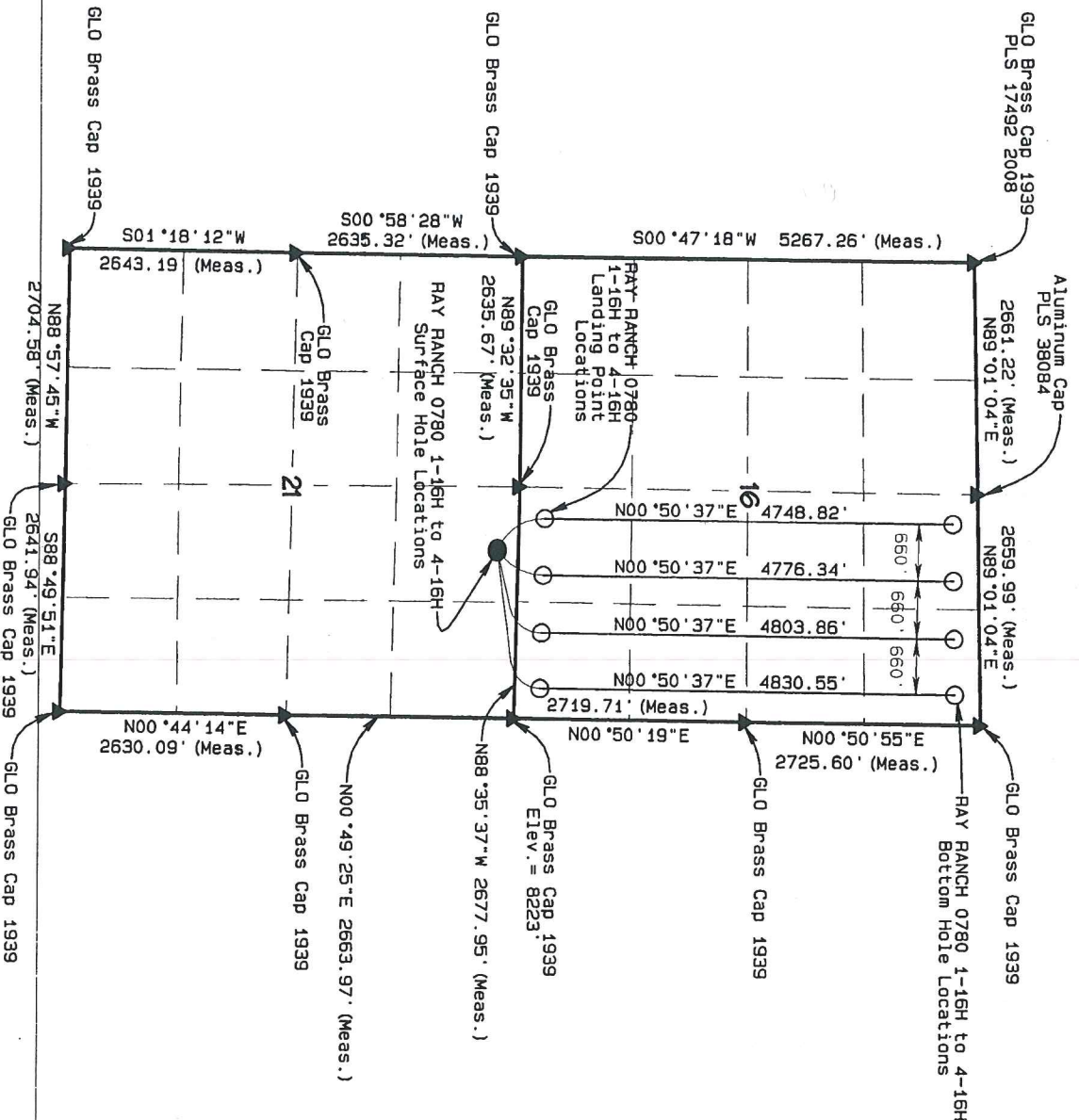
NORTH PARK ENGINEERING &
CONSULTING, INC.

P.O. BOX 395
MALDEN, CO 80480
(970) 723-3725

DATE OF FIELD WORK: JUL 22, 2015 DRAWING COMPLETION: MAR 30, 2016
SURVEYED BY: RAS DRAWN BY: THH CHECKED BY: RRM

LEGEND

FOUND CORNER
PROPOSED WELL
PROPOSED BHL/LPL



T7N, R80W, 6th P.M.

RAY RANCH 0780 1-16H

GLO Brass Cap 1939
N=1451727.96, E=2758595.77 Elev. = 8223'

Sandridge Exploration & Production, LLC

Surface Location, RAY RANCH 0780 1-16H located as shown in the NW1/4NE1/4 of Section 21, T7N, R80W, 6th P.M., Jackson County, Colorado.

BASIS OF BEARINGS:

US STATE PLANE 1983
CO NORTH 0501 GRID

BASIS OF ELEVATION

SPOT ELEVATION AT THE NE CORNER OF SECTION 21, T7N, R80W, 6TH PM, TAKEN FROM THE COALMONT QUADRANGLE, USGS 7.5 MIN QUAD (TOPOGRAPHIC MAP) WITH SAID ELEVATION MARKED AS BEING 8223 FEET.

SURFACE USE

AGRICULTURAL/GRAZING

GRAPHIC SCALE 1"=1000'

1000 0 1000



I, RANDALL R. MILLER, BEING A REGISTERED LAND SURVEYOR IN THE STATE OF COLORADO, DO HEREBY CERTIFY THAT THIS PLAT WAS MADE BY ME AND/OR UNDER MY DIRECT SUPERVISION AND THAT IT IS ACCURATE TO THE BEST OF MY KNOWLEDGE.

DATED THIS _____ DAY OF _____

RANDALL R. MILLER, COLORADO PLS. NO. 48083



LEGEND

90° SYMBOL
FOUND CORNER
PROPOSED WELL
PROPOSED BHL/LPL

NAD 83 (SURFACE LOCATION)	
LATITUDE=40.569537°N	PDOP=2.125
LONGITUDE=106.376011°W	
NAD 83 (TARGET BOTTOM HOLE)	
LATITUDE=40.584097°N	
LONGITUDE=106.377191°W	
NAD 83 (LANDING POINT LOCATION)	
LATITUDE=40.571062°N	
LONGITUDE=106.377274°W	

NORTH PARK ENGINEERING & CONSULTING, INC.

P.O. BOX 395
WALDEN, CO 80480
(970) 723-3725

DATE OF FIELD WORK: JUL 22, 2015 DRAWING COMPLETION: MAR 30, 2016
SURVEYED BY: RAS DRAWN BY: THH CHECKED BY: RRM

T7N, R80W, 6th P.M.

SandRidge Exploration & Production, LLC

Target Bottom Hole, RAY RANCH 0780 1-16H Located as shown in the NW1/4NE1/4 of Section 16, T7N, R80W, 6th P.M., Jackson County, Colorado.

BASIS OF BEARINGS:

US STATE PLANE 1983
CO NORTH 0501 GRID

BASIS OF ELEVATION

SPOT ELEVATION AT THE NE CORNER OF SECTION 24, T7N, R80W, 6TH PM, TAKEN FROM THE COALMONT QUADRANGLE, USGS 7.5 MIN QUAD (TOPOGRAPHIC MAP) WITH SAID ELEVATION MARKED AS BEING 8223 FEET.

SURFACE USE

AGRICULTURAL/GRAZING

GRAPHIC SCALE 1"=1000'



I, RANDALL R. MILLER, BEING A REGISTERED LAND SURVEYOR IN THE STATE OF COLORADO, DO HEREBY CERTIFY THAT THIS PLAT WAS MADE BY ME AND/OR UNDER MY DIRECT SUPERVISION AND THAT IT IS ACCURATE TO THE BEST OF MY KNOWLEDGE.

DATED THIS _____ DAY OF _____

RANDALL R. MILLER, COLORADO LICENSE #38084



NORTH PARK ENGINEERING & CONSULTING, INC.

P.O. BOX 395
WALDEN, CO 80480
(970) 723-3723

DATE OF FIELD WORK: JUL 22, 2015
DRAWING COMPLETION: MAR 30, 2016
SURVEYED BY: RAS
DRAWN BY: TGH
CHECKED BY: RRM

500°47'18"W 5267.26' (Meas.)

GLO Brass Cap 1939
PLS 17492 2008
N=1457081.47, E=27533355.52

Aluminum Cap PLS 38084
N=1457126.92, E=2756016.35
GLO Brass Cap 1939
N=1457172.68, E=2758675.95

N89°01'04"E 2660.60' (Meas.)

N89°01'04"E 2660.60' (Meas.)

RAY RANCH 0780 1-16H

Target Bottom Hole
300' FNL, 2310' FEL
N=1456832.94, E=2756360.66

2310'

GLO Brass Cap 1939
N=1454447.37
E=2758635.58

N00°50'55"E 2725.60' (Meas.)

16

N00°50'37"E 4748.82'

RAY RANCH 0780 1-16H

Landing Point Location
300' FSL, 2310' FEL
N=1452084.64, E=2756290.75

GLO Brass Cap 1939
N=1451793.69
E=2755918.63

2310'

N00°50'19"E 2719.71' (Meas.)

GLO Brass Cap 1939
N=1451727.96, E=2758595.77

N88°35'37"W 2677.95' (Meas.)

N89°32'35"W 2635.67' (Meas.)

GLO Brass Cap 1939
N=1451814.71, E=2753283.04

LEGEND

- 90° SYMBOL
- FOUND CORNER
- PROPOSED WELL
- PROPOSED BHL/LPL

NAD 83 (TARGET BOTTOM HOLE)	NAD 83 (SURFACE LOCATION)
LATITUDE=40.584097°N	LATITUDE=40.569537°N
LONGITUDE=106.377191°W	LONGITUDE=106.376041°W
	PDDP=2.125
NAD 83 (LANDING POINT LOCATION)	
LATITUDE=40.571062°N	
LONGITUDE=106.377274°W	

77N, R80W, 6th P.M.

RAY RANCH 0780 2-16H

300' F.S.L.

Landing Point Location
1650' FEL N=1452068.44, E=2756950.58
N89°32'35"W 2635.67' (Meas.)

N88°35'37"W
2677.95' (Meas.)

GLO Brass Cap 1939
N=1451793.69, E=2755918.63

GLO Brass Cap 1939
N=1451814.71, E=2753283.04

RAY RANCH 0780 2-16H

Surface Location
Elev. Ungraded
Ground=8235'
250' FNL, 1942' FEL
N=1451525.26, E=2756650.90

500°58'28"W 2635.32' (Meas.)

S01°18'12"W 2643.19' (Meas.)

GLO Brass Cap 1939
N=1449179.77, E=2753238.22

21

GLO Brass Cap 1939
N=1449064.26
E=2758557.48

N88°57'45"W 2704.58' (Meas.)

GLO Brass Cap 1939
N=1446537.26, E=2753178.10

S88°49'51"E 2641.94' (Meas.)

GLO Brass Cap 1939
N=1446488.29, E=2755882.24

N00°44'14"E 2630.09' (Meas.)

N00°49'25"E 2663.97' (Meas.)

GLO Brass Cap 1939
N=1451727.96, E=2758595.77 Elev. = 8223'

Sandridge Exploration & Production, LLC

Surface Location, RAY RANCH 0780 2-16H, located as shown in the NW1/4NE1/4 of Section 21, T7N, R80W, 6th P.M., Jackson County, Colorado.

BASIS OF BEARINGS:

US STATE PLANE 1983
CO NORTH 0501 GRID

BASIS OF ELEVATION

SPOT ELEVATION AT THE NE CORNER OF SECTION 21, T7N, R80W, 6TH PM, TAKEN FROM THE COALMONT QUADRANGLE, USGS 7.5 MIN QUAD (TOPOGRAPHIC MAP) WITH SAID ELEVATION MARKED AS BEING 8223 FEET.

SURFACE USE
AGRICULTURAL/GRAZING

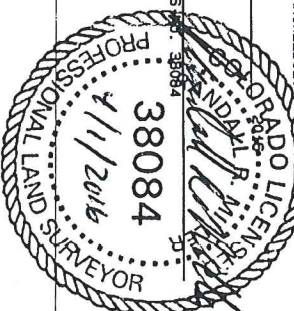
GRAPHIC SCALE 1"=1000'



I, RANDALL R. MILLER, BEING A REGISTERED LAND SURVEYOR IN THE STATE OF COLORADO, DO HEREBY CERTIFY THAT THIS SURVEY WAS MADE BY ME AND/OR UNDER MY DIRECT SUPERVISION AND THAT IT IS ACCURATE TO THE BEST OF MY KNOWLEDGE.

DATED THIS _____ DAY OF _____

RANDALL R. MILLER, COLORADO PLS. NO. 38084



LEGEND

90° SYMBOL
FOUND CORNER
PROPOSED WELL
PROPOSED BHL/LPL

NAD 83 (TARGET BOTTOM HOLE)	NAD 83 (SURFACE LOCATION)
LATITUDE=40.584146°N LONGITUDE=106.374814°W	LATITUDE=40.569537°N LONGITUDE=106.375957°W
NAD 83 (LANDING POINT LOCATION)	PDOP=1.344
LATITUDE=40.571036°N LONGITUDE=106.374898°W	

NORTH PARK ENGINEERING & CONSULTING, INC.

P.O. BOX 395
MALDEN, CO 80480
(970) 723-3725

DATE OF FIELD WORK: JUL 22, 2015 DRAWING COMPLETION: MAR 30, 2016
SURVEYED BY: RAS DRAWN BY: TGH CHECKED BY: RRM

T7N, R80W, 6th P.M.

SandRidge Exploration & Production, LLC

Target Bottom Hole, RAY RANCH 0780 2-16H Located as shown in the NW1/4NE1/4 of Section 16, T7N, R80W, 6th P.M., Jackson County, Colorado.

BASIS OF BEARINGS:

US STATE PLANE 1983
CO NORTH 0501 GRID

BASIS OF ELEVATION

SPOT ELEVATION AT THE NE CORNER OF SECTION 21, T7N, R80W, 6TH PM, TAKEN FROM THE COALMONT QUADRANGLE, USGS 7.5 MIN QUAD (TOPOGRAPHIC MAP) WITH SAID ELEVATION MARKED AS BEING 8223 FEET.

SURFACE USE

AGRICULTURAL/GRAZING

GRAPHIC SCALE 1"=1000'

1000 0 1000



I, RANDALL R. MILLER, BEING A REGISTERED LAND SURVEYOR IN THE STATE OF COLORADO, DO HEREBY CERTIFY THAT THE FOREGOING IS ACCURATE TO THE BEST OF MY KNOWLEDGE.

DATED THIS _____ DAY OF _____

RANDALL R. MILLER, COLORADO PLS NO. 38084



NORTH PARK ENGINEERING & CONSULTING, INC.

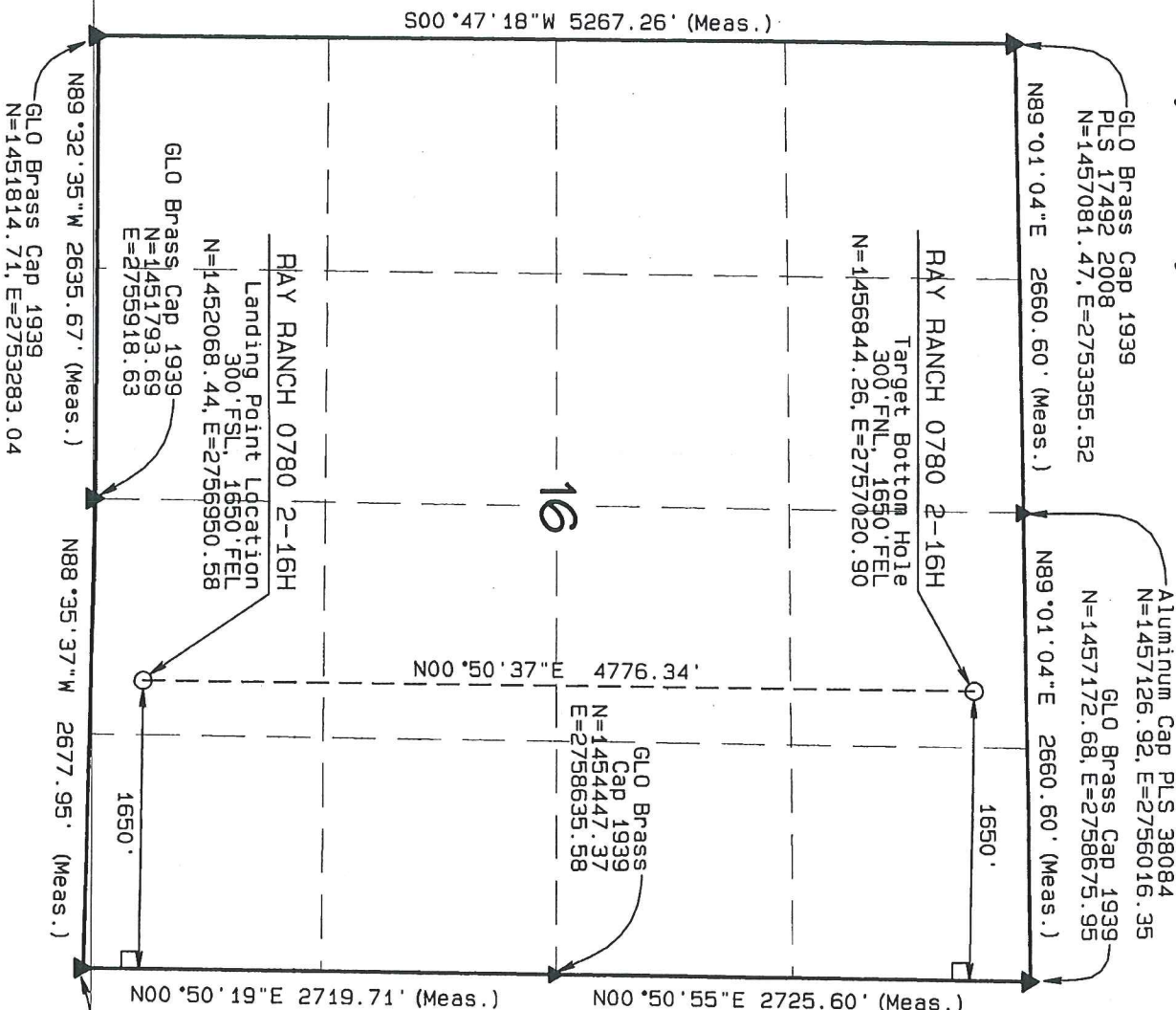
P.O. BOX 395
WALDEN, CO 80480
(970) 723-3725

DATE OF FIELD WORK: JUL 22, 2015 DRAWING COMPLETION: MAR 30, 2016
SURVEYED BY: RAS DRAWN BY: TMM CHECKED BY: PPM

LEGEND

90° SYMBOL
FOUND CORNER
PROPOSED WELL
PROPOSED BHL/LPL

NAD 83 (SURFACE LOCATION)	LATITUDE=40.569537°N LONGITUDE=106.375957°W PDOP=1.344
NAD 83 (TARGET BOTTOM HOLE)	LATITUDE=40.584146°N LONGITUDE=106.374814°W
NAD 83 (LANDING POINT LOCATION)	LATITUDE=40.571036°N LONGITUDE=106.374898°W



T7N, R80W, 6th P.M. RAY RANCH 0780 3-16H

Landing Point Location
300' FSL, 990' FEL N=1452052.24, E=2757610.41

GL0 Brass Cap 1939
N=1451727.96, E=2758595.77 Elev. = 8223'

Surface Location, RAY RANCH 0780 3-16H, located as shown in the NW1/4NE1/4 of Section 21, T7N, R80W, 6th P.M., Jackson County, Colorado.

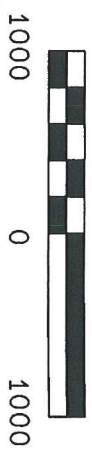
BASIS OF BEARINGS:
US STATE PLANE 1983
CO NORTH 0501 GRID

BASIS OF ELEVATION

SPOT ELEVATION AT THE NE CORNER OF SECTION 21, T7N, R80W, 6th PM, TAKEN FROM THE COALMONT QUADRANGLE, USGS 7.5 MIN QUAD (TOPOGRAPHIC MAP) WITH SAID ELEVATION MARKED AS BEING 8223 FEET.

SURFACE USE
AGRICULTURAL/GRAZING

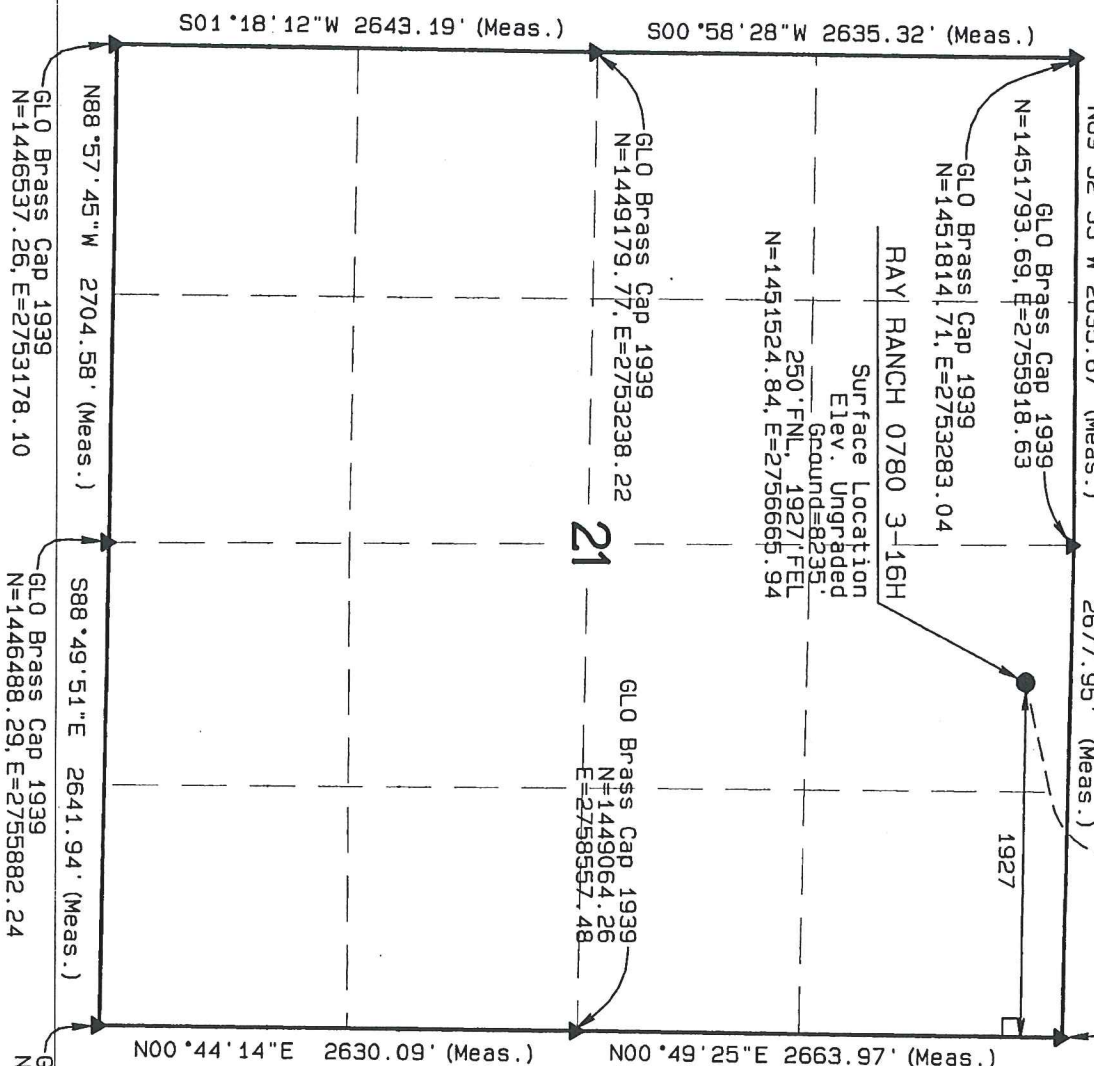
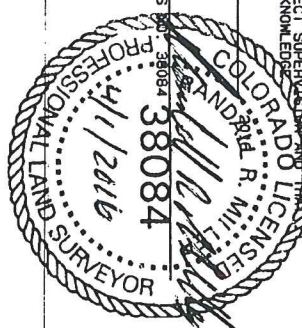
GRAPHIC SCALE 1"=1000'



I, RANDALL R. MILLER, BEING A REGISTERED LAND SURVEYOR IN THE STATE OF COLORADO, DO HEREBY CERTIFY THAT THE SURVEY HEREIN SHOWN IS ACCURATE TO THE BEST OF MY KNOWLEDGE.

DATED THIS _____ DAY OF _____

RANDALL R. MILLER, COLORADO PLS. NO. 38084



LEGEND

- 90° SYMBOL
- FOUND CORNER
- PROPOSED WELL
- PROPOSED BHL/LPL

NAD 83 (SURFACE LOCATION)		<div>CONSULTING, INC.</div> <div>P.O. BOX 395 WALDEN, CO 80480 (970) 723-3725</div>	
LATITUDE=40.569536°N	PODP=1.835		
LONGITUDE=106.375903°W			
NAD 83 (LANDING POINT LOCATION)	DATE OF FIELD WORK: JUL 22, 2015 DRAWING COMPLETION: MAR 30, 2016		
LATITUDE=40.571009°N	SURVEYED BY: RAS DRAWN BY: THH CHECKED BY: FRM		
LONGITUDE=106.372522°W			
NAD 83 (TARGET BOTTOM HOLE)			
LATITUDE=40.584195°N			
LONGITUDE=106.372438°W			

T7N, R80W, 6th P.M.

SandRidge Exploration & Production, LLC

Target Bottom Hole, RAY RANCH 0780 3-16H Located as shown in the NE1/4NE1/4 of Section 16, T7N, R80W, 6th P.M., Jackson County, Colorado.

BASIS OF BEARINGS:

US STATE PLANE 1983
CO NORTH 0501 GRID

BASIS OF ELEVATION

SPOT ELEVATION AT THE NE CORNER OF SECTION 21, T7N, R80W, 6TH PM, TAKEN FROM THE COALMONT QUADRANGLE, USGS 7.5 MIN QUAD (TOPOGRAPHIC MAP) WITH SAID ELEVATION MARKED AS BEING 8223 FEET.

SURFACE USE

AGRICULTURAL/GRAZING

GRAPHIC SCALE 1"=1000'



I, RANDALL R. MILLER, BEING A REGISTERED LAND SURVEYOR IN THE STATE OF COLORADO, DO HEREBY CERTIFY THAT THIS PLAN WAS MADE BY ME AND/OR UNDER MY DIRECT SUPERVISION AND THAT IT IS ACCURATE TO THE BEST OF MY KNOWLEDGE.

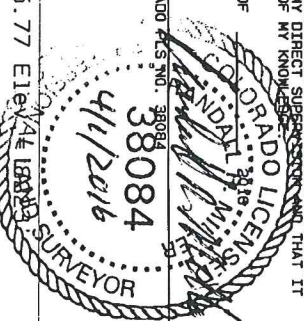
DATED THIS _____ DAY OF _____

RANDALL R. MILLER, COLORADO L.S. NO. 38084

38084

4/1/2016

SURVEYOR



GL0 Brass Cap 1939
N=1451727.96, E=2758595.77

GL0 Brass Cap 1939
N=1451814.71, E=2753283.04

LEGEND

90° SYMBOL
FOUND CORNER
PROPOSED WELL
PROPOSED BHL/LPL

NAD 83 (TARGET BOTTOM HOLE)
LATITUDE=40.584195° N
LONGITUDE=106.372438° W

NAD 83 (SURFACE LOCATION)
LATITUDE=40.569536° N
LONGITUDE=106.375903° W
PDOP=1.835

NAD 83 (LANDING POINT LOCATION)
LATITUDE=40.571009° N
LONGITUDE=106.372522° W

NORTH PARK ENGINEERING & CONSULTING, INC.
P.O. BOX 395
WALDEN, CO 80480
(970) 723-3725

DATE OF FIELD WORK: JUL 22, 2015
DRAWING COMPLETION: MAR 30, 2016
SURVEYED BY: RAS
DRAWN BY: TGH
CHECKED BY: PEM

500°47'18"W 5267.26' (Meas.)

GL0 Brass Cap 1939
PLS 17492 2008
N=1457081.47, E=2753355.52

Aluminum Cap PLS 38084
N=1457126.92, E=2756016.35
GL0 Brass Cap 1939
N=1457172.68, E=2758675.95

RAY RANCH 0780 3-16H
Target Bottom Hole
300' FSL, 990' FEL
N=1456855.58, E=2757684.14

GL0 Brass Cap 1939
N=1454447.37, E=2758635.58

RAY RANCH 0780 3-16H
Landing Point Location
300' FSL, 990' FEL
N=1452052.24, E=2757610.41

GL0 Brass Cap 1939
N=1451793.69
E=2755918.63

N89°01'04"E 2660.60' (Meas.)

990'

990'

GL0 Brass Cap 1939
N=1451727.96, E=2758595.77

38084

SURVEYOR

4/1/2016

SURVEYOR

T7N, R80W, 6th P.M.

RAY RANCH 0780 4-16H

Landing Point Location
300' FSL, 350' FEL N=1452036.53, E=2758250.25

SandRidge Exploration & Production, LLC

GLO Brass Cap 1939
N=1451727.96, E=2758595.77 Elev. = 8223'

Surface Location, RAY RANCH 0780 4-16H, located as shown in the NW1/4NE1/4 of Section 21, T7N, R80W, 6th P.M., Jackson County, Colorado.

BASIS OF BEARINGS:

US STATE PLANE 1983
CO NORTH 0501 GRID

BASIS OF ELEVATION

SPOT ELEVATION AT THE NE CORNER OF SECTION 21, T7N, R80W, 6TH PM, TAKEN FROM THE COALMONT QUADRANGLE, USGS 7.5 MIN QUAD (TOPOGRAPHIC MAP) WITH SAID ELEVATION MARKED AS BEING 8223 FEET.

SURFACE USE

AGRICULTURAL/GRAZING

GRAPHIC SCALE 1"=1000'

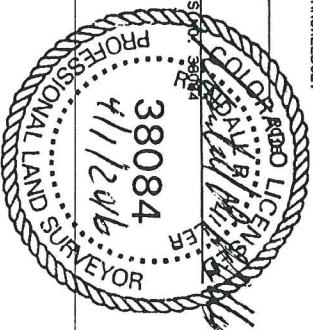
1000 0 1000



I, RANDALL R. MILLER, BEING A REGISTERED LAND SURVEYOR IN THE STATE OF COLORADO, DO HEREBY CERTIFY THAT THE SURVEY MADE BY ME AND/OR UNDER MY DIRECT SUPERVISION AND THAT IT IS ACCURATE TO THE BEST OF MY KNOWLEDGE.

DATED THIS _____ DAY OF _____

RANDALL R. MILLER, COLORADO LICENSE #38084



NORTH PARK ENGINEERING & CONSULTING, INC.

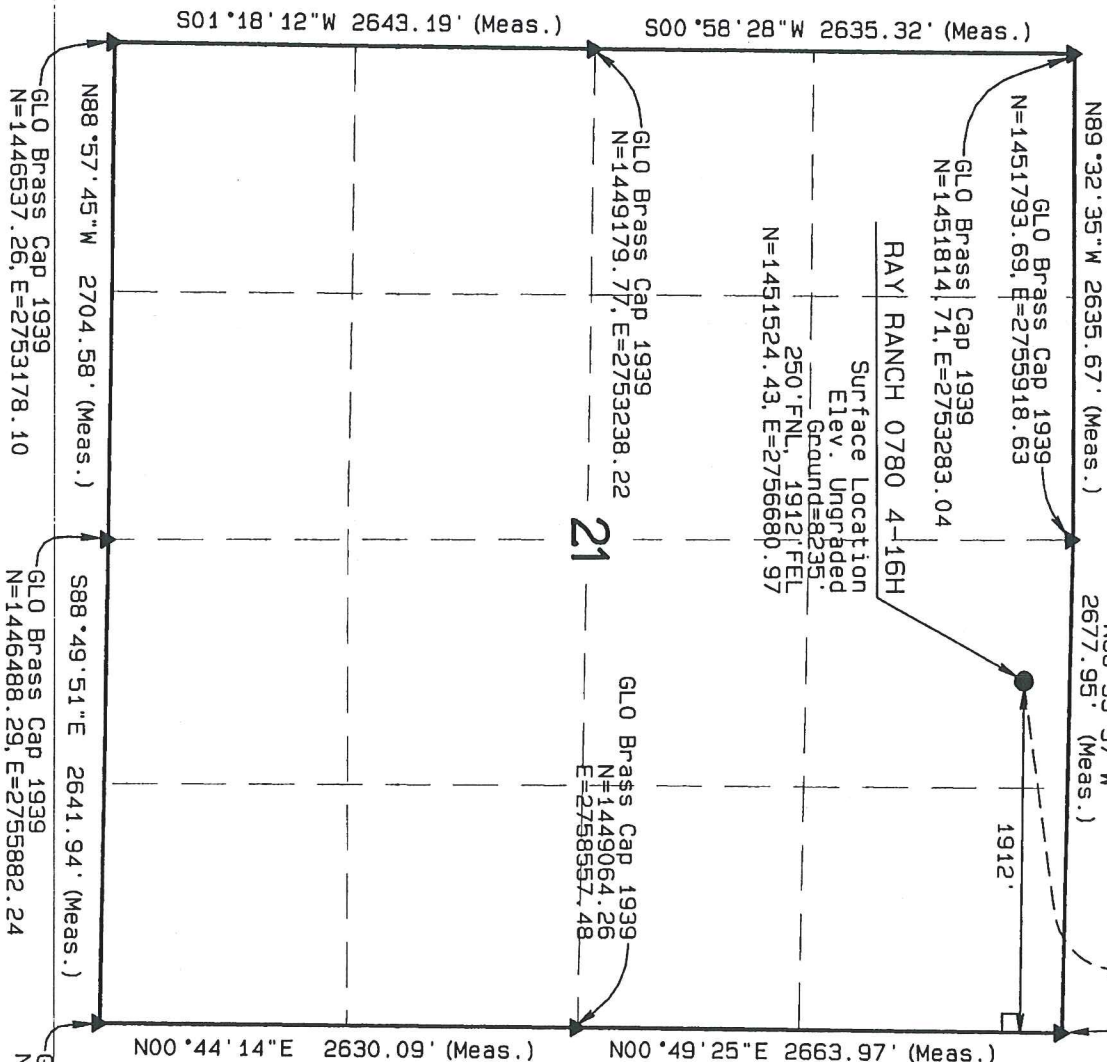
P.O. BOX 395
WALDEN, CO 80480
(970) 723-3725

DATE OF FIELD WORK: JUL 22, 2015 DRAWING COMPLETION: MAR 30, 2016
SURVEYED BY: RAS DRAWN BY: TMH CHECKED BY: RRM

LEGEND

90° SYMBOL
FOUND CORNER
PROPOSED WELL
PROPOSED BHL/LPL

NAD 83 (TARGET BOTTOM HOLE)	NAD 83 (SURFACE LOCATION)
LATITUDE=40.584242° N LONGITUDE=106.370133° W	LATITUDE=40.569535° N LONGITUDE=106.375849° W
	PDOF=1.736
NAD 83 (LANDING POINT LOCATION)	
LATITUDE=40.570983° N LONGITUDE=106.370219° W	



T7N, R80W, 6th P.M.

Aluminum Cap PLS 38084
N=1457126.92, E=2756016.35

GLO Brass Cap 1939
PLS 17492 2008
N=1457081.47, E=2753355.52

GLO Brass Cap 1939
N=1457172.68, E=2758675.95

Target Bottom Hole, RAY RANCH 0780 4-16H Located
as shown in the NE1/4NE1/4 of Section 16, T7N,
R80W, 6th P.M., Jackson County, Colorado.

SandRidge Exploration & Production, LLC

BASIS OF BEARINGS:

US STATE PLANE 1983
CO NORTH 0501 GRID

BASIS OF ELEVATION

SPOT ELEVATION AT THE NE CORNER OF SECTION 21,
T7N, R80W, 6TH PM, TAKEN FROM THE COALMONT
QUADRANGLE, USGS 7.5 MIN QUAD (TOPOGRAPHIC MAP)
WITH SAID ELEVATION MARKED AS BEING 8223 FEET.

SURFACE USE

AGRICULTURAL/GRAZING

GRAPHIC SCALE 1"=1000'

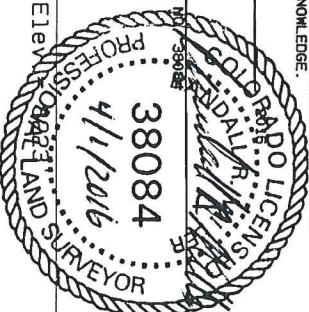
1000 0 1000



I, RANDALL R. MILLER, BEING A REGISTERED LAND SURVEYOR IN THE
STATE OF COLORADO, DO HEREBY CERTIFY THAT THIS PLAT WAS
MADE BY ME AND/OR UNDER MY DIRECT SUPERVISION AND THAT IT
IS ACCURATE TO THE BEST OF MY KNOWLEDGE.

DATED THIS _____ DAY OF _____

RANDALL R. MILLER, COLORADO PLS NO. 38084



GLO Brass Cap 1939
N=1451727.96, E=2758595.77 Elev

S00°47'18"W 5267.26' (Meas.)

N89°01'04"E 2660.60' (Meas.)

N89°01'04"E 2660.60' (Meas.)

RAY RANCH 0780 4-16H

Target Bottom Hole
300' FNL, 350' FEL
N=1456866.55, E=2758321.38

GLO Brass Cap 1939
N=1454447.37, E=2758635.58

16

RAY RANCH 0780 4-16H

Landing Point Location
300' FSL, 350' FEL
N=1452036.53, E=2758250.25

N00°50'37"E 4830.55'

N00°50'19"E 2719.71' (Meas.)

N00°50'55"E 2725.60' (Meas.)

N89°32'35"W 2635.67' (Meas.)

N88°35'37"W 2677.95' (Meas.)

GLO Brass Cap 1939
N=1451814.71, E=2753283.04

LEGEND

90° SYMBOL
FOUND CORNER
PROPOSED WELL
PROPOSED BHL/LPL

NAD 83 (TARGET BOTTOM HOLE)
LATITUDE=40.584242°N
LONGITUDE=106.370133°W

NAD 83 (SURFACE LOCATION)
LATITUDE=40.569535°N
LONGITUDE=106.375849°W
PDOP=1.736

NORTH PARK ENGINEERING &
CONSULTING, INC.
P.O. BOX 395
WALDEN, CO 80480
(970) 723-3725
DATE OF FIELD WORK: JUL 22, 2015
DRAWING COMPLETION: MAR 30, 2016
CHECKED BY: RRM