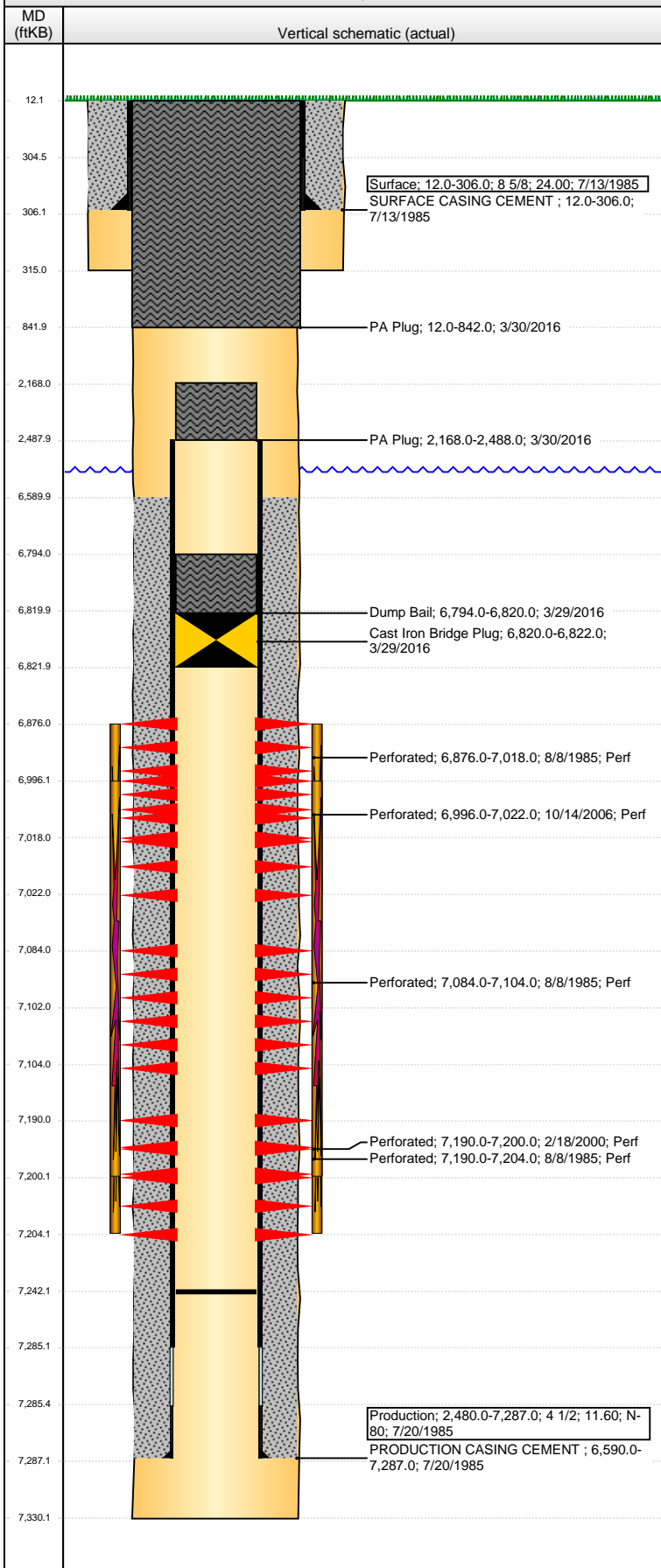


**Well Name: STATE-HOPPE 16-03**

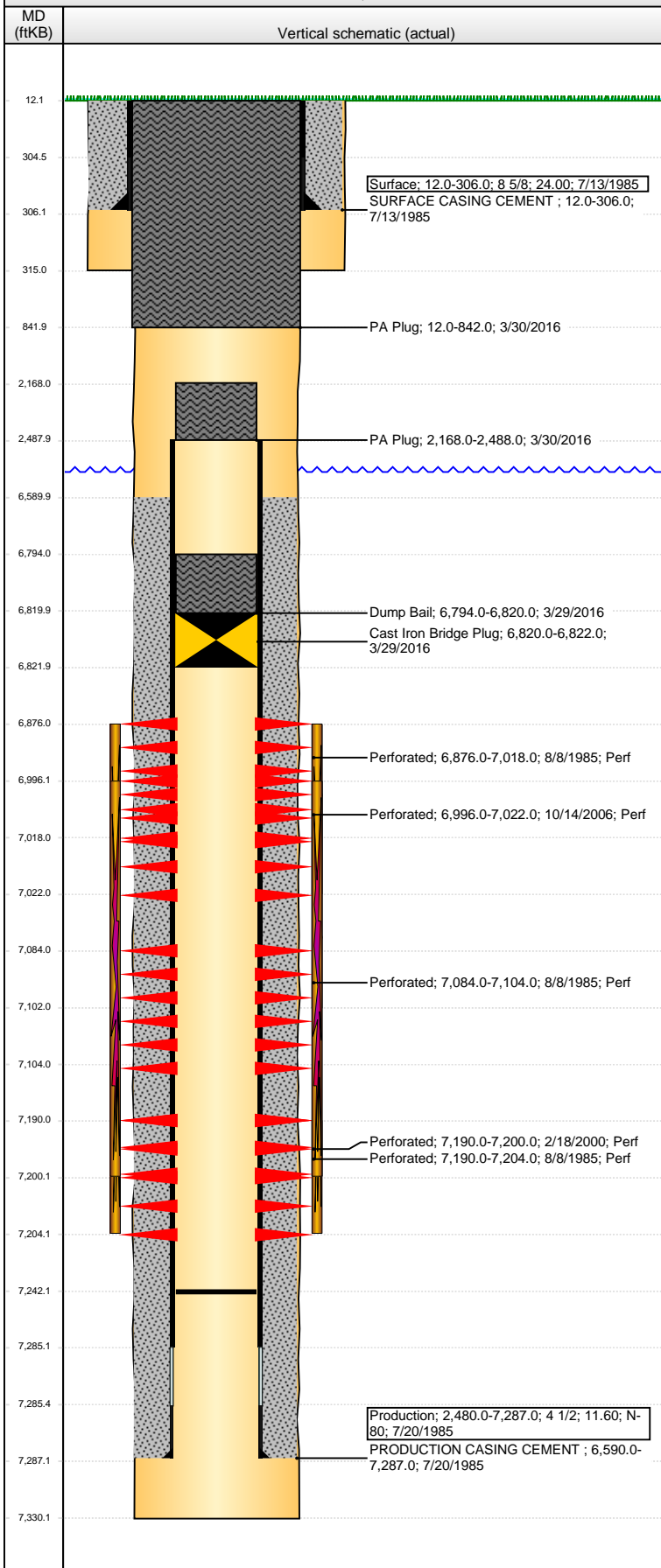
VERTICAL - ORIGINAL HOLE, 4/27/2016 1:52:31 PM



Well Header									
API 05-123-12521		Business Unit DJ BASIN		District 15		Well Config VERTICAL			
Original KB Elevation (ft) 4,789		KB - GL / MSL (ftKB) 12.00		Spud Date 7/12/1985		P & A Date 3/29/2016			
Comment NO TBG DATA IN DRL RPTS									
Directions To Well									
Congressional Location									
Quarter 1	Quarter 2 SE	Quarter 3 SW	Quarter 4 NW	Section 16	Township 6 N	Twnshp N...	Range 66	Rng E/W Dir W	
Bottom Hole Location									
North-South Distance (ft)		From N or S Line		East-West Distance (ft)			From E or W Line		
Plug Back Total Depths									
Date	Depth (ftKB)	Method			Com				
8/2/1985	7,113.0	CASED HOLE LOG			DEPTH LOGGER FROM CBL				
2/17/2000	7,235.0	TAG			CLEAN OUT				
10/12/2006	7,242.0	TAG			CLEAN OUT				
Wellbore Sections									
Section Des			Size (in)		Act Top, MD (ftKB)		Act Btm, MD (ftKB)		
SURFACE			12 1/4		12.0		315.0		
PRODUCTION			7 7/8		315.0		7,330.0		
Zone Statuses									
Zone Name	Status Date	Status	Fluid Type	Job	Prod Method				
NIOBRARA-C...	3/29/2016	P&A		ABANDON WE...					
CODELL	9/5/1985	PR		DRILLING/CO...					
CODELL	2/29/2000	PR		RE-FRAC, 2/15...					
CODELL	10/23/2006	PR		RE-FRAC, 10/1...					
CODELL	3/29/2016	P&A		ABANDON WE...					
NIOBRARA	9/5/1985	PR		DRILLING/CO...					
NIOBRARA	10/23/2006	PR		RE-FRAC, 10/1...					
NIOBRARA	3/29/2016	P&A		ABANDON WE...					
Casing Strings									
Surface, 306.0ftKB									
Casing Description	Run Date	OD (in)	Wt/Len (l...	Grade	Top, MD (ft...	MD (ftKB)			
Surface	7/13/1985	8 5/8	24.00		12.0	306.0			
Production, 7,287.0ftKB									
Casing Description	Run Date	OD (in)	Wt/Len (l...	Grade	Top, MD (ft...	MD (ftKB)			
Production	7/20/1985	4 1/2	11.60	N-80	12.0	7,287.0			
Cement									
Description					Top Depth (ftKB)	Bottom Depth (ftKB)			
SURFACE CASING CEMENT					12.0	306.0			
Description					Top Depth (ftKB)	Bottom Depth (ftKB)			
PRODUCTION CASING CEMENT					6,590.0	7,287.0			
Description					Top Depth (ftKB)	Bottom Depth (ftKB)			
Dump Bail					6,794.0	6,820.0			
Description					Top Depth (ftKB)	Bottom Depth (ftKB)			
PA Plug					2,168.0	2,488.0			
Description					Top Depth (ftKB)	Bottom Depth (ftKB)			
PA Plug					12.0	842.0			
Tubing Strings									
Tubing Description	Run Date	String...	ID (in)	Wt (lb/ft)	Grade	Len (ft)	Set De...		
Perforation Data									
Zone	Bnch/St g	Entered Shot Total	Top (ftKB)	Btm (ftKB)		Date			
NIOBRARA, ORIGINAL HOLE	B	6	6,876.00	7,018.00		8/8/1985			
NIOBRARA, ORIGINAL HOLE	B	104	6,996.00	7,022.00		10/14/2006			
NIOBRARA, ORIGINAL HOLE	C	5	7,084.00	7,104.00		8/8/1985			
CODELL, ORIGINAL HOLE		40	7,190.00	7,200.00		2/18/2000			
CODELL, ORIGINAL HOLE		5	7,190.00	7,204.00		8/8/1985			

**Well Name: STATE-HOPPE 16-03**

VERTICAL - ORIGINAL HOLE, 4/27/2016 1:52:34 PM



## Stimulations & Treatments

Date	8/9/1985	Zone	NIOBRARA, ORIGINAL HOLE	Primary Job Type	DRILLING/COMPLETION - ORIGINAL
Technical Result		Tech Result Details		Tech Result Note	
Comment					
Date	8/13/1985	Zone	NIOBRARA-CODELL, ORIGINAL HOLE	Primary Job Type	DRILLING/COMPLETION - ORIGINAL
Technical Result		Tech Result Details		Tech Result Note	
Comment	LIMITED ENTRY				
Date	2/22/2000	Zone	CODELL, ORIGINAL HOLE	Primary Job Type	RE-FRAC
Technical Result		Tech Result Details		Tech Result Note	
Comment					
Date	10/14/2006	Zone	NIOBRARA, ORIGINAL HOLE	Primary Job Type	RE-FRAC
Technical Result		Tech Result Details		Tech Result Note	
Comment					
Date	10/17/2006	Zone	NIOBRARA-CODELL, ORIGINAL HOLE	Primary Job Type	RE-FRAC
Technical Result		Tech Result Details		Tech Result Note	
Comment	LIMITED ENTRY				

## Other In Hole

Run Date	Des	OD (in)	Top (ftKB)	Btm (ftKB)
3/29/2016	Cast Iron Bridge Plug	3.99	6,820.0	6,822.0

## Logs

Date	Type	Top, MD (ftKB)	Btm, MD (ftKB)
7/19/1985	COMPENSATED DENSILOG	4,300.0	7,310.0
7/19/1985	INDUCTION	306.0	7,310.0
8/2/1985	CEMENT BOND	6,500.0	7,110.0
3/29/2016	GYRO	12.0	7,180.0