



Ursa Operating Company, LLC

Rockies Region

Monument Ridge B

Monument Ridge B 44A-08-07-95

Wellbore #1

Design: Production

End of Well Report

11 February, 2016



Company:	Ursa Operating Company, LLC	Local Co-ordinate Reference:	Well Monument Ridge B 44A-08-07-95
Project:	Rockies Region	TVD Reference:	Monument Ridge B 44A-08-07-95 @ 5718.8usft (PLAN
Site:	Monument Ridge B	MD Reference:	Monument Ridge B 44A-08-07-95 @ 5718.8usft (PLAN
Well:	Monument Ridge B 44A-08-07-95	North Reference:	True
Wellbore:	Wellbore #1	Survey Calculation Method:	Minimum Curvature
Design:	Production	Database:	EDM 5000.1 Single User Db

Project	Rockies Region		
Map System:	US State Plane 1983	System Datum:	Mean Sea Level
Geo Datum:	North American Datum 1983		
Map Zone:	Colorado Central Zone		

Site	Monument Ridge B		
Site Position:		Northing:	1,596,716.56 usft
From:	Lat/Long	Easting:	2,287,433.43 usft
Position Uncertainty:	0.0 usft	Slot Radius:	13-3/16 "
		Latitude:	39° 26' 40.501 N
		Longitude:	108° 1' 24.665 W
		Grid Convergence:	-1.59 °

Well	Monument Ridge B 44A-08-07-95, SHL: 39.447572099 -108.012356008		
Well Position	+N/-S	0.0 usft	Northing: 1,597,717.26 usft
	+E/-W	0.0 usft	Easting: 2,290,614.57 usft
Position Uncertainty	0.0 usft	Wellhead Elevation:	5,718.8 usft
		Ground Level:	5,701.8 usft

Wellbore	Wellbore #1				
Magnetics	Model Name	Sample Date	Declination (°)	Dip Angle (°)	Field Strength (nT)
	IGRF2015	1/6/2016	9.85	65.57	51,664

Design	Production			
Audit Notes:				
Version:	1.0	Phase:	ACTUAL	Tie On Depth: 0.0
Vertical Section:	Depth From (TVD) (usft)	+N/-S (usft)	+E/-W (usft)	Direction (°)
	0.0	0.0	0.0	300.66

Survey Program	Date	2/11/2016		
From (usft)	To (usft)	Survey (Wellbore)	Tool Name	Description
118.0	6,944.0	Survey #1 (Wellbore #1)	MWD	MWD - Standard

Company:	Ursa Operating Company, LLC	Local Co-ordinate Reference:	Well Monument Ridge B 44A-08-07-95
Project:	Rockies Region	TVD Reference:	Monument Ridge B 44A-08-07-95 @ 5718.8usft (PLAN
Site:	Monument Ridge B	MD Reference:	Monument Ridge B 44A-08-07-95 @ 5718.8usft (PLAN
Well:	Monument Ridge B 44A-08-07-95	North Reference:	True
Wellbore:	Wellbore #1	Survey Calculation Method:	Minimum Curvature
Design:	Production	Database:	EDM 5000.1 Single User Db

Survey										
MD (usft)	Inc (°)	Azi (azimuth) (°)	TVD (usft)	V. Sec (usft)	N/S (usft)	E/W (usft)	DLeg (°/100usft)	Build (°/100usft)	Turn (°/100usft)	
0.0	0.00	0.00	0.0	0.0	0.0	0.0	0.00	0.00	0.00	
118.0	1.14	343.79	118.0	0.9	1.1	-0.3	0.97	0.97	0.00	
149.0	1.10	2.38	149.0	1.2	1.7	-0.4	1.17	-0.13	59.97	
179.0	0.40	20.79	179.0	1.4	2.1	-0.4	2.44	-2.33	61.37	
209.0	0.00	277.17	209.0	1.4	2.2	-0.3	1.33	-1.33	0.00	
239.0	0.40	219.43	239.0	1.4	2.1	-0.4	1.33	1.33	0.00	
269.0	0.88	234.76	269.0	1.5	1.9	-0.6	1.68	1.60	51.10	
300.0	1.45	254.54	300.0	1.9	1.7	-1.2	2.22	1.84	63.81	
331.0	2.07	275.94	331.0	2.7	1.6	-2.1	2.88	2.00	69.03	
361.0	2.50	283.54	360.9	3.8	1.8	-3.3	1.75	1.43	25.33	
392.0	3.21	287.45	391.9	5.3	2.2	-4.8	2.37	2.29	12.61	
423.0	4.08	284.65	422.8	7.2	2.8	-6.7	2.86	2.81	-9.03	
453.0	4.79	290.09	452.7	9.4	3.5	-8.9	2.75	2.37	18.13	
483.0	5.27	296.73	482.6	12.0	4.5	-11.3	2.51	1.60	22.13	
514.0	6.11	303.98	513.5	15.1	6.1	-14.0	3.56	2.71	23.39	
545.0	6.94	304.81	544.3	18.6	8.1	-16.9	2.69	2.68	2.68	
575.0	7.16	301.21	574.0	22.3	10.1	-19.9	1.64	0.73	-12.00	
606.0	7.16	298.92	604.8	26.2	12.0	-23.3	0.92	0.00	-7.39	
638.0	7.03	299.14	636.6	30.1	13.9	-26.7	0.42	-0.41	0.69	
667.0	7.51	298.66	665.3	33.8	15.7	-30.0	1.67	1.66	-1.66	
698.0	8.04	298.71	696.0	38.0	17.7	-33.6	1.71	1.71	0.16	
729.0	8.31	297.60	726.7	42.4	19.8	-37.5	1.01	0.87	-3.58	
759.0	8.44	298.88	756.4	46.7	21.9	-41.4	0.76	0.43	4.27	
789.0	8.31	302.13	786.1	51.1	24.1	-45.1	1.64	-0.43	10.83	
819.0	8.22	303.18	815.8	55.4	26.4	-48.8	0.59	-0.30	3.50	
850.0	8.04	303.98	846.5	59.8	28.8	-52.4	0.69	-0.58	2.58	
892.0	8.22	303.36	888.0	65.7	32.1	-57.4	0.48	0.43	-1.48	

Company:	Ursa Operating Company, LLC	Local Co-ordinate Reference:	Well Monument Ridge B 44A-08-07-95
Project:	Rockies Region	TVD Reference:	Monument Ridge B 44A-08-07-95 @ 5718.8usft (PLAN
Site:	Monument Ridge B	MD Reference:	Monument Ridge B 44A-08-07-95 @ 5718.8usft (PLAN
Well:	Monument Ridge B 44A-08-07-95	North Reference:	True
Wellbore:	Wellbore #1	Survey Calculation Method:	Minimum Curvature
Design:	Production	Database:	EDM 5000.1 Single User Db

Survey										
MD (usft)	Inc (°)	Azi (azimuth) (°)	TVD (usft)	V. Sec (usft)	N/S (usft)	E/W (usft)	DLeg (°/100usft)	Build (°/100usft)	Turn (°/100usft)	
935.0	8.44	299.23	930.6	72.0	35.4	-62.7	1.48	0.51	-9.60	
978.0	8.70	299.19	973.1	78.4	38.5	-68.3	0.60	0.60	-0.09	
1,021.0	8.90	297.72	1,015.6	84.9	41.6	-74.1	0.70	0.47	-3.42	
1,063.0	8.88	298.66	1,057.1	91.4	44.7	-79.8	0.35	-0.05	2.24	
1,106.0	9.38	299.58	1,099.6	98.2	48.0	-85.7	1.21	1.16	2.14	
1,148.0	9.36	300.06	1,141.0	105.1	51.4	-91.7	0.19	-0.05	1.14	
1,191.0	9.45	300.15	1,183.4	112.1	54.9	-97.8	0.21	0.21	0.21	
1,234.0	9.40	300.11	1,225.8	119.1	58.5	-103.8	0.12	-0.12	-0.09	
1,276.0	9.26	299.75	1,267.3	126.0	61.9	-109.7	0.36	-0.33	-0.86	
1,319.0	9.45	301.47	1,309.7	132.9	65.4	-115.8	0.79	0.44	4.00	
1,362.0	9.27	300.37	1,352.1	139.9	69.0	-121.8	0.59	-0.42	-2.56	
1,405.0	9.32	301.65	1,394.6	146.9	72.6	-127.7	0.49	0.12	2.98	
1,447.0	8.83	303.27	1,436.0	153.5	76.2	-133.3	1.32	-1.17	3.86	
1,490.0	8.88	304.11	1,478.5	160.1	79.8	-138.8	0.32	0.12	1.95	
1,533.0	8.83	304.55	1,521.0	166.7	83.6	-144.3	0.20	-0.12	1.02	
1,575.0	8.48	300.02	1,562.5	173.0	86.9	-149.6	1.82	-0.83	-10.79	
1,618.0	8.57	297.78	1,605.1	179.4	90.0	-155.2	0.80	0.21	-5.21	
1,661.0	8.53	295.36	1,647.6	185.8	92.9	-160.9	0.84	-0.09	-5.63	
1,680.0	8.65	294.68	1,666.4	188.6	94.1	-163.5	0.83	0.63	-3.58	
1,763.0	8.70	297.43	1,748.4	201.1	99.6	-174.7	0.50	0.06	3.31	
1,849.0	8.13	296.33	1,833.5	213.6	105.3	-185.9	0.69	-0.66	-1.28	
1,934.0	7.87	304.37	1,917.7	225.4	111.2	-196.1	1.35	-0.31	9.46	
2,019.0	8.53	305.47	2,001.8	237.5	118.2	-206.1	0.80	0.78	1.29	
2,105.0	8.17	303.10	2,086.9	250.0	125.2	-216.4	0.58	-0.42	-2.76	
2,190.0	7.92	302.43	2,171.1	261.9	131.6	-226.4	0.31	-0.29	-0.79	
2,275.0	7.43	300.99	2,255.3	273.2	137.6	-236.0	0.62	-0.58	-1.69	
2,361.0	7.16	298.57	2,340.6	284.1	143.0	-245.5	0.48	-0.31	-2.81	

Company:	Ursa Operating Company, LLC	Local Co-ordinate Reference:	Well Monument Ridge B 44A-08-07-95
Project:	Rockies Region	TVD Reference:	Monument Ridge B 44A-08-07-95 @ 5718.8usft (PLAN
Site:	Monument Ridge B	MD Reference:	Monument Ridge B 44A-08-07-95 @ 5718.8usft (PLAN
Well:	Monument Ridge B 44A-08-07-95	North Reference:	True
Wellbore:	Wellbore #1	Survey Calculation Method:	Minimum Curvature
Design:	Production	Database:	EDM 5000.1 Single User Db

Survey										
MD (usft)	Inc (°)	Azi (azimuth) (°)	TVD (usft)	V. Sec (usft)	N/S (usft)	E/W (usft)	DLeg (°/100usft)	Build (°/100usft)	Turn (°/100usft)	
2,446.0	6.81	296.94	2,425.0	294.5	147.9	-254.7	0.47	-0.41	-1.92	
2,532.0	6.46	294.92	2,510.4	304.4	152.2	-263.6	0.49	-0.41	-2.35	
2,617.0	6.68	301.42	2,594.8	314.1	156.8	-272.2	0.91	0.26	7.65	
2,702.0	7.29	308.55	2,679.2	324.4	162.7	-280.6	1.25	0.72	8.39	
2,788.0	8.75	304.90	2,764.4	336.3	169.9	-290.2	1.80	1.70	-4.24	
2,873.0	8.83	303.01	2,848.4	349.2	177.1	-301.0	0.35	0.09	-2.22	
2,958.0	8.75	302.53	2,932.4	362.2	184.2	-311.9	0.13	-0.09	-0.56	
3,044.0	8.48	302.92	3,017.4	375.1	191.1	-322.8	0.32	-0.31	0.45	
3,129.0	8.37	301.85	3,101.5	387.5	197.8	-333.3	0.23	-0.13	-1.26	
3,215.0	8.07	300.02	3,186.6	399.8	204.1	-343.8	0.46	-0.35	-2.13	
3,300.0	7.78	299.84	3,270.8	411.6	210.0	-354.0	0.34	-0.34	-0.21	
3,386.0	6.77	305.38	3,356.1	422.4	215.8	-363.2	1.43	-1.17	6.44	
3,471.0	7.87	299.98	3,440.4	433.2	221.6	-372.3	1.53	1.29	-6.35	
3,556.0	7.82	297.43	3,524.6	444.8	227.2	-382.5	0.41	-0.06	-3.00	
3,642.0	8.70	301.25	3,609.7	457.2	233.3	-393.2	1.21	1.02	4.44	
3,727.0	8.31	299.73	3,693.8	469.8	239.6	-404.0	0.53	-0.46	-1.79	
3,813.0	7.69	298.66	3,778.9	481.7	245.5	-414.5	0.74	-0.72	-1.24	
3,898.0	7.95	304.81	3,863.2	493.3	251.6	-424.3	1.03	0.31	7.24	
3,984.0	7.87	303.29	3,948.3	505.1	258.2	-434.1	0.26	-0.09	-1.77	
4,069.0	7.25	303.01	4,032.6	516.2	264.3	-443.5	0.73	-0.73	-0.33	
4,154.0	7.21	303.71	4,116.9	526.9	270.2	-452.4	0.11	-0.05	0.82	
4,240.0	7.73	302.04	4,202.2	538.1	276.2	-461.8	0.66	0.60	-1.94	
4,325.0	7.60	301.10	4,286.4	549.4	282.2	-471.4	0.21	-0.15	-1.11	
4,410.0	6.99	300.02	4,370.7	560.2	287.7	-480.7	0.74	-0.72	-1.27	
4,496.0	5.41	305.16	4,456.2	569.5	292.6	-488.6	1.95	-1.84	5.98	
4,581.0	3.60	313.51	4,541.0	576.1	296.8	-493.8	2.26	-2.13	9.82	
4,667.0	2.07	294.22	4,626.9	580.3	299.3	-497.2	2.07	-1.78	-22.43	

Company:	Ursa Operating Company, LLC	Local Co-ordinate Reference:	Well Monument Ridge B 44A-08-07-95
Project:	Rockies Region	TVD Reference:	Monument Ridge B 44A-08-07-95 @ 5718.8usft (PLAN
Site:	Monument Ridge B	MD Reference:	Monument Ridge B 44A-08-07-95 @ 5718.8usft (PLAN
Well:	Monument Ridge B 44A-08-07-95	North Reference:	True
Wellbore:	Wellbore #1	Survey Calculation Method:	Minimum Curvature
Design:	Production	Database:	EDM 5000.1 Single User Db

Survey										
MD (usft)	Inc (°)	Azi (azimuth) (°)	TVD (usft)	V. Sec (usft)	N/S (usft)	E/W (usft)	DLeg (°/100usft)	Build (°/100usft)	Turn (°/100usft)	
4,752.0	1.85	284.64	4,711.8	583.1	300.2	-499.9	0.46	-0.26	-11.27	
4,837.0	1.89	283.76	4,796.8	585.8	300.9	-502.6	0.06	0.05	-1.04	
4,923.0	1.58	280.11	4,882.7	588.3	301.5	-505.1	0.38	-0.36	-4.24	
5,008.0	1.41	283.67	4,967.7	590.4	301.9	-507.3	0.23	-0.20	4.19	
5,094.0	1.31	286.58	5,053.7	592.3	302.5	-509.3	0.14	-0.12	3.38	
5,179.0	1.39	274.30	5,138.7	594.2	302.8	-511.2	0.35	0.09	-14.45	
5,264.0	1.10	254.89	5,223.6	595.7	302.7	-513.0	0.60	-0.34	-22.84	
5,350.0	0.53	48.74	5,309.6	596.1	302.7	-513.5	1.85	-0.66	178.90	
5,435.0	0.62	71.86	5,394.6	595.7	303.1	-512.8	0.29	0.11	27.20	
5,521.0	0.35	74.49	5,480.6	595.2	303.3	-512.1	0.31	-0.31	3.06	
5,606.0	0.26	86.46	5,565.6	594.9	303.4	-511.7	0.13	-0.11	14.08	
5,692.0	0.66	165.02	5,651.6	594.4	303.0	-511.4	0.77	0.47	91.35	
5,777.0	1.03	172.08	5,736.6	593.5	301.7	-511.1	0.45	0.44	8.31	
5,862.0	1.19	194.07	5,821.6	592.8	300.1	-511.2	0.53	0.19	25.87	
5,948.0	1.23	208.79	5,907.6	592.5	298.4	-511.9	0.36	0.05	17.12	
6,033.0	1.32	211.87	5,992.6	592.5	296.8	-512.8	0.13	0.11	3.62	
6,119.0	0.82	330.50	6,078.5	593.1	296.5	-513.7	2.16	-0.58	137.94	
6,204.0	1.19	338.47	6,163.5	594.3	297.8	-514.3	0.46	0.44	9.38	
6,290.0	1.29	346.15	6,249.5	595.7	299.6	-514.9	0.23	0.12	8.93	
6,375.0	0.83	2.07	6,334.5	596.6	301.2	-515.1	0.64	-0.54	18.73	
6,461.0	0.62	10.69	6,420.5	597.1	302.2	-515.0	0.27	-0.24	10.02	
6,546.0	0.88	8.37	6,505.5	597.5	303.3	-514.8	0.31	0.31	-2.73	
6,631.0	0.80	353.20	6,590.5	598.1	304.6	-514.8	0.28	-0.09	-17.85	
6,717.0	0.31	320.10	6,676.5	598.7	305.4	-515.0	0.66	-0.57	-38.49	
6,802.0	0.10	170.27	6,761.5	598.9	305.5	-515.1	0.47	-0.25	-176.27	
6,889.0	0.35	125.07	6,848.5	598.5	305.2	-514.9	0.33	0.29	-51.95	
Projection to Bit										

Company:	Ursa Operating Company, LLC	Local Co-ordinate Reference:	Well Monument Ridge B 44A-08-07-95
Project:	Rockies Region	TVD Reference:	Monument Ridge B 44A-08-07-95 @ 5718.8usft (PLAN
Site:	Monument Ridge B	MD Reference:	Monument Ridge B 44A-08-07-95 @ 5718.8usft (PLAN
Well:	Monument Ridge B 44A-08-07-95	North Reference:	True
Wellbore:	Wellbore #1	Survey Calculation Method:	Minimum Curvature
Design:	Production	Database:	EDM 5000.1 Single User Db

Survey									
MD (usft)	Inc (°)	Azi (azimuth) (°)	TVD (usft)	V. Sec (usft)	N/S (usft)	E/W (usft)	DLeg (°/100usft)	Build (°/100usft)	Turn (°/100usft)
6,944.0	0.35	125.07	6,903.5	598.2	305.0	-514.6	0.00	0.00	0.00

Design Annotations				
Measured Depth (usft)	Vertical Depth (usft)	Local Coordinates		Comment
		+N/-S (usft)	+E/-W (usft)	
6,889.0	6,848.5	305.2	-514.9	Projection to Bit

Checked By: _____	Approved By: _____	Date: _____
-------------------	--------------------	-------------

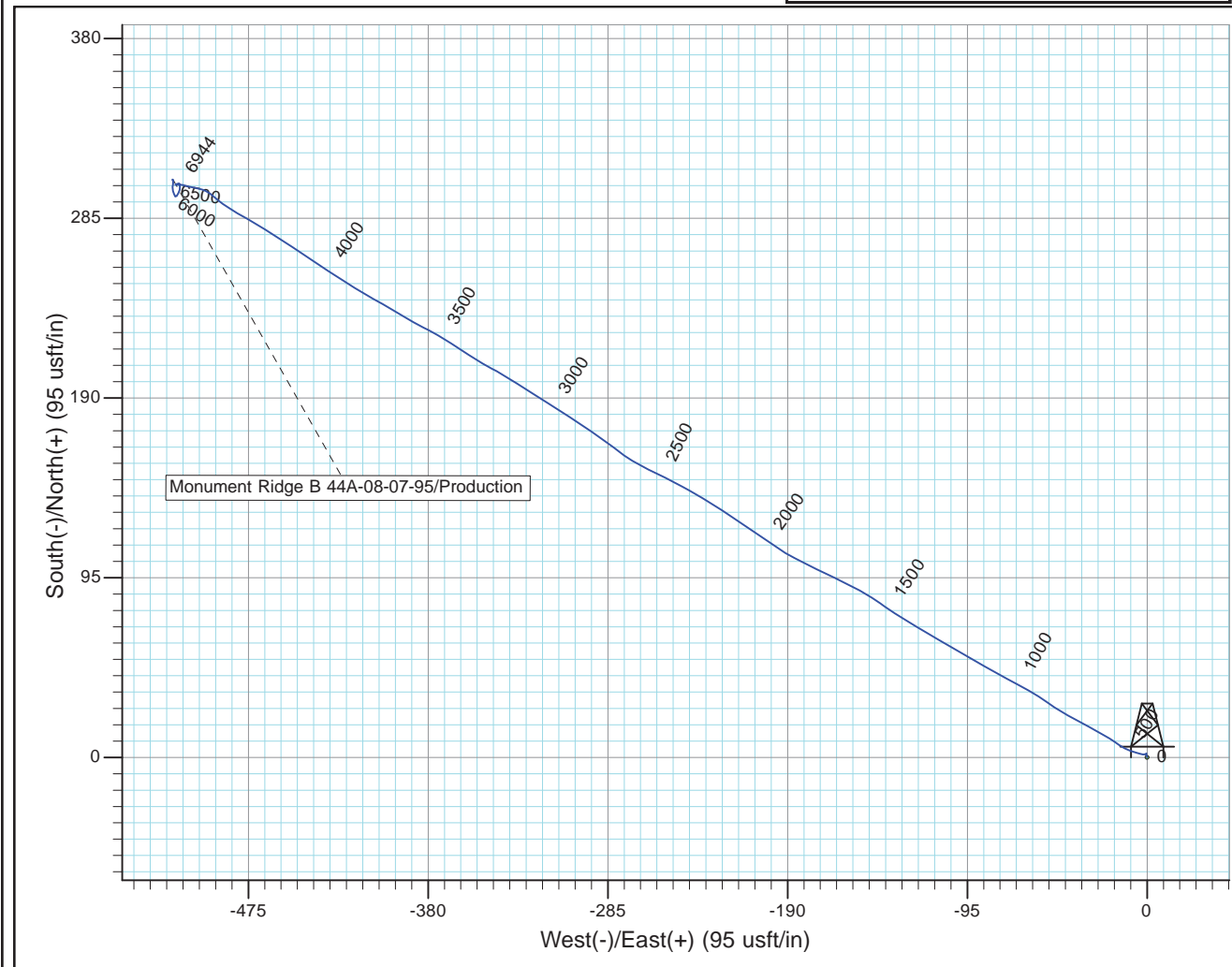
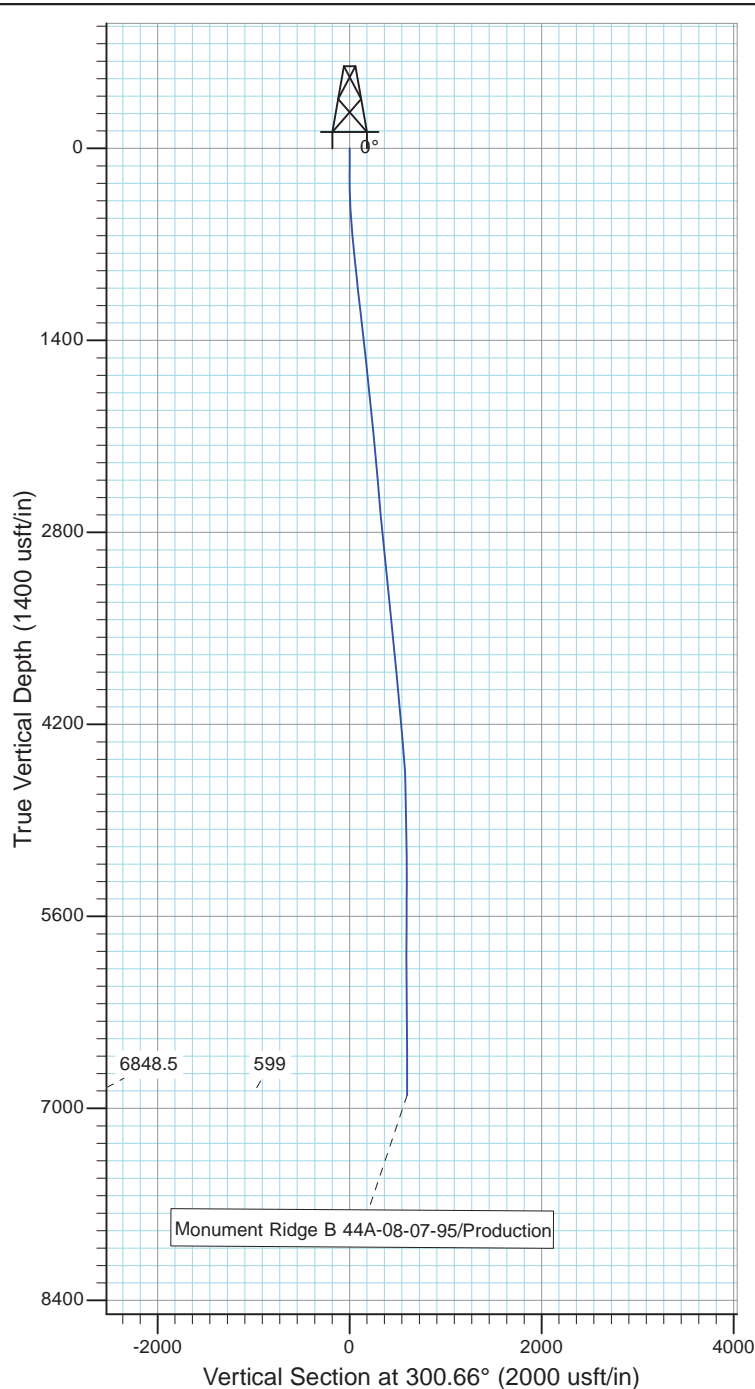


Project: Rockies Region
 Site: Monument Ridge B
 Well: Monument Ridge B 44A-08-07-95
 Wellbore: Wellbore #1
 Design: Production



Azimuths to True North
 Magnetic North: 9.85°

Magnetic Field
 Strength: 51663.6snT
 Dip Angle: 65.57°
 Date: 1/6/2016
 Model: IGRF2015



Design: Production (Monument Ridge B 44A-08-07-95/Wellbore #1)

Created By: Matthew Linton

Date: 9:39, February 11 2016

THIS SURVEY IS CORRECT TO THE BEST OF
 MY KNOWLEDGE AND IS SUPPORTED
 BY ACTUAL FIELD DATA