

April 18, 2016



410 17th Street, Suite 1400
Denver, CO 80202
(720) 440-6100 phone
(720) 305-0804 fax

Bonanzaerk.com

Colorado Oil and Gas Conservation Commission
The Chancery Building
1120 Lincoln Street, Suite 801
Denver, CO 80203
Matthew Lepore, Director

Re: Notice of 318A.a.(4)D. Proposed Niobrara Horizontal Wellbore Spacing Unit

Latham U41-1-12XRLNC

SHL: SESE (231' FSL, 1105' FEL) Section 36-T5N-R63W, Weld County, CO

Top of Production: (631' FNL, 482' FEL) Section 1-T4N-R63W, Weld County, CO

Bottom of Production: (470' FSL, 470' FEL) Section 12-T4N-R63W, Weld County, CO

Director Lepore:

Bonanza Creek Energy Operating Company LLC ("Bonanza") intends to permit, drill and operate the referenced Niobrara Horizontal Well. As defined by Colorado Oil and Gas Conservation Commission (COGCC) Rule 318A.a.(4)D., Bonanza proposes the following wellbore spacing unit:

E/2E/2 of Section 1, Township 4N, Range 63W, containing 160 acres more or less

E/2E/2 of Section 12, Township 4N, Range 63W, containing 160 acres more or less

A map depicting the proposed wellbore spacing unit is attached, for your reference. Bonanza has notified the other owners in the unit and no objections were received. Copies of the notifications are maintained in Bonanza's files.

Bonanza respectfully requests that you review the enclosed wellbore spacing unit documentation and approve the referenced APD.

Please do not hesitate to call or email me at (303) 803-1718 or Jvigil@Bonanzacrk.com, should you have any questions pertaining to this matter.

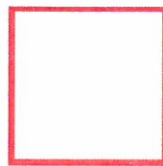
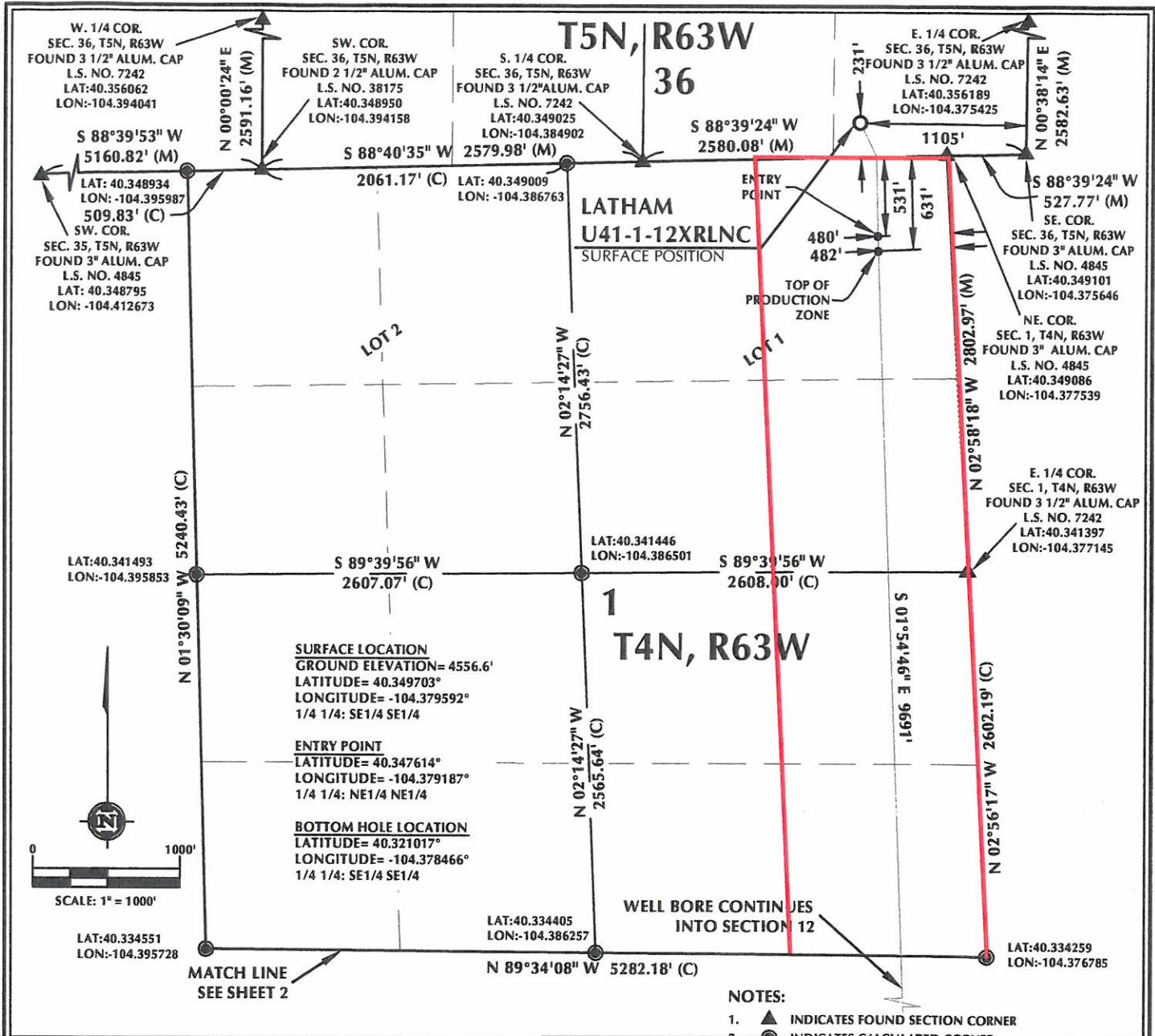
Sincerely,

A handwritten signature in blue ink that reads 'J. Vigil'.

Julie L. Vigil

Sr. Regulatory Specialist

BONANZA CREEK ENERGY OPERATING COMPANY LLC



Wellbore Spacing Unit Outline



Proposed Spacing Unit Map

November 9, 2015 KK

Latham U41-1-12XRLNC
E/2E/2 Section 1, Township 4N, Range 63W
E/2E/2 Section 12, Township 4N, Range 63W
Weld County, Colorado

T4N, R63W

MATCH LINE
SEE SHEET 1

LAT: 40.334551
LON: -104.395728

N 89°34'08" W 5282.18' (C)

LAT: 40.334405
LON: -104.386257

LAT: 40.334259
LON: -104.376785

LAT: 40.327286
LON: -104.395804

N 00°15'35" W 5293.28' (C)

N 89°30'38" W
2652.23' (C)

LAT: 40.327132
LON: -104.386293

12

N 89°30'38" W
2652.23' (C)

S 01°54'46" E 9691'

LAT: 40.326978
LON: -104.376782

SURFACE LOCATION
GROUND ELEVATION= 4556.6'
LATITUDE= 40.349703°
LONGITUDE= -104.379592°
1/4 1/4: SE1/4 SE1/4

ENTRY POINT
LATITUDE= 40.347614°
LONGITUDE= -104.379187°
1/4 1/4: NE1/4 NE1/4

BOTTOM HOLE LOCATION
LATITUDE= 40.321017°
LONGITUDE= -104.378466°
1/4 1/4: SE1/4 SE1/4

N 00°29'59" W
2649.49' (C)

LAT: 40.319859
LON: -104.386329

N 89°27'10" W 5326.74' (C)

470'
470'

LAT: 40.319697
LON: -104.376780

SW. COR.
SEC. 12, T4N, R63W
FOUND 3" ALUM. CAP
L.S. NO. 4845
LAT: 40.320021
LON: -104.395879

SCALE: 1" = 1000'

NEAREST CULTURAL ITEMS:

BUILDING: 5280'+
BUILDING UNIT: 5280'+
HIGH OCCUPANCY BUILDING UNIT: 5280'+
DESIGNATED OUTSIDE ACTIVITY AREA: 5280'+
PUBLIC ROAD: 5280'+
ABOVE GROUND UTILITY: ±2680' SW
RAILROAD: 5280'+
PROPERTY LINE: ±231' S

NOTES:

1. ▲ INDICATES FOUND SECTION CORNER
2. ● INDICATES CALCULATED CORNER
3. DRAWING LATITUDE AND LONGITUDE COORDINATES ARE NAD 83 (CORS 96)(EPOCH:2002)
4. ELEVATION BASED ON NAVD88 (GEOID09)
5. BASIS OF BEARING DERIVED FROM COLORADO COORDINATE SYSTEM 1983 NORTH ZONE UNLESS OTHERWISE NOTED.
6. ALL MEASURED DISTANCES ARE GRID.
COMBINED SCALE FACTOR: .99974499
7. OPERATOR: ROB WILSON / PDOP = 2.0
8. SEE ADDENDUM TO WELL LOCATION CERTIFICATE FOR EXISTING IMPROVEMENTS WITHIN 500' OF THE WELL PAD.
9. WELL FOOTAGES ARE MEASURED AT RIGHT ANGLES TO THE

Proposed Spacing Unit Map

November 9, 2015

Page 2