



Natural Formation Evaluation

Gamma Ray

LWD Composite Log

Scale:	Company: Noble Energy																		
	Well: Moser H34-735																		
	Field: Weld County																		
	County: Weld																		
Depth Reference:	State: United States																		
	Driller's Depth																		
	Status:																		
	Final Print																		
API No:	Surface Location:																		
	Latitude: 040° 12' 9.720" N																		
	Longitude: 104° 38' 49.236" W																		
	Directional VSS																		
Job ID:	SEC: 27																		
	TMWN: 3N																		
	RGE: 65W																		
	Other Services:																		
Permanent Datum (P.D.):	Ground Level																		
	Elevation: 8411.00 ft																		
	KB: 0.00 ft																		
	DF: 8441.00 ft																		
Log Measured From:	Rig Floor																		
	Above P.D.																		
	30.00 ft																		
	GL: 8411.00 ft																		
Dates	Interval Logged																		
	Magnetic Field Reference																		
	Date From: Top: (ft)																		
	Date To: Bottom: (ft)																		
Spud Date:	Azi Reference North:																		
	Total Magnetic Field Strength: (nT)																		
	Mag to Reference North Correction: (deg)																		
	Dip Angle: (deg)																		
Borehole Record										Casing Record									
Hole Size (in)	From (ft)	To (ft)	Size (in)	Weight (lb/ft)	From (ft)	To (ft)	Hole Size (in)	Interval (ft)	Inc Az (Start)	Inc Az (End)	8.500	1859.00	16444.95	9.625	36.00	30.00	1849.00		
															</				

"These interpretations and analyses ("Interpretations") are opinions provided by Baker Hughes Oilfield Operations, Inc ("Baker Hughes"), based upon industry practice, empirical relationships, assumptions and measurements, (many of which may be provided by the customer). The Interpretations are not infallible and may be subject to different opinions. Thus, Baker Hughes does not warrant their accuracy, correctness, or completeness, or that the customer's and/or any third party's reliance on such Interpretations will accomplish any particular results. The customer assumes full responsibility for the use of the Interpretations and for decisions based thereon and the customer agrees to release, defend and indemnify Baker Hughes, its parent, subsidiaries and affiliated or related entities, and subcontractors, together with its and their officers, directors, employees, agents and invitees against, any and all claims, losses, damages, or expenses sustained by the customer or any third party arising out of reliance upon or use of the Interpretations, without regard to the cause(s) thereof, including without limitation any form of negligence on the

part of Baker Hughes. Unless other contract terms have been agreed to by the parties, each party's liabilities and obligations shall be governed by Baker Hughes Incorporated's Worldwide Terms and Conditions."

Log Run Summary

Run No	Bit Run No.	Bit Size (in)	Bit Type	Bit Gauge Length (in)	Assembly Type	Logged Interval		Bit Depth Interval		Date / Time		Circ. Hours (h)
						Top	Bottom	From	To	Start Logging	End Logging	
						(ft)	(ft)	(ft)	(ft)			
1	2	8.500	PDC	2.00	AutoTrak Curve	1845.83	11492.30	1858.00	11498.85	2015-12-17 22:01	2015-12-20 12:27	58.04
2	3	8.500	PDC	2.00	AutoTrak Curve	11486.12	16438.39	11498.85	16444.95	2015-12-21 03:07	2015-12-22 16:43	51.71

Crew

Name		Arrive Wellsite	Depart Wellsite	Name		Arrive Wellsite	Depart Wellsite	Name		Arrive Wellsite	Depart Wellsite
Adam Schlenz		2015-12-16	2015-12-23	Dustin Zink		2015-12-16	2015-12-23	Garrett Gerdsen		2015-12-16	2015-12-23
Matthew Delmore		2015-12-16	2015-12-22	Mike Gurnsey		2015-12-16	2015-12-23				

Mud Properties Record

Date / Time		Run No.	Measured Depth (ft)	Mud Type	Density (ppg)	Viscosity (cP)	pH	Fluid Loss (cm3)	Oil / Water	Source	Total Chlorides (ppm)	K+ (%)
2015-12-18 02:00		1	3017.00	Oil Based Mud	9.5	16	N/A	10.4	63.0/26.1	Active Pit	35000	0.00
2015-12-18 13:30		1	5070.00	Oil Based Mud	9.6	17	N/A	9.2	62.5/26.0	Active Pit	56000	0.00
2015-12-19 02:30		1	6524.00	Oil Based Mud	9.8	18	N/A	8.8	61.0/27.0	Active Pit	53000	0.00
2015-12-19 13:30		1	8320.00	Oil Based Mud	10.4	24	N/A	11.0	60.0/25.0	Active Pit	44000	0.00
2015-12-20 02:30		1	10240.00	Oil Based Mud	10.6	31	N/A	10.0	59.0/24.3	Active Pit	45000	0.00
2015-12-20 13:30		1	11501.00	Oil Based Mud	10.8	35	N/A	10.4	59.0/23.0	Active Pit	48000	0.00
2015-12-21 02:30		2	11501.00	Oil Based Mud	10.8	34	N/A	9.8	59.0/23.3	Active Pit	36000	0.00
2015-12-21 13:30		2	12866.00	Oil Based Mud	10.8	40	N/A	10.8	58.0/23.8	Active Pit	44000	0.00
2015-12-22 02:30		2	14843.00	Oil Based Mud	11.0	50	N/A	11.0	57.5/23.0	Active Pit	38000	0.00

Equipment and Service Data

Run No.	Tool	Serial Number	Measurement	Sensor Offset (ft)	Bit Offset (ft)	Max O.D. (in)	Min I.D. (in)
1	ATC_SU	12099238	Near Bit Inclination	5.93	6.55	7.000	4.330
1	ATC_MWD	12398256	Gamma (single)	2.21	12.17	7.000	3.250
1	ATC_MWD	12398256	Directional (mag)	12.28	22.24	7.000	3.250
2	ATC_SU	12185879	Near Bit Inclination	5.93	6.56	7.000	4.330
2	ATC_MWD	12232962	Gamma (single)	2.75	12.73	7.000	3.250

2	ATC_MWD	12232962	Directional (mag)	12.27	22.25	7.000	3.250
---	---------	----------	-------------------	-------	-------	-------	-------

Service and Tool Mnemonics

Mnemonic	Name	Description
ATC_SU	ATC_SU	Auto Trak Curve Steering Unit
ATC_MWD	ATC_MWD	Auto Trak Curve MWD
ATC_LCPM	ATC_LCPM	Auto Trak Curve LCPM

Comments

- 1 Baker Hughes Runs 1 and 2 utilized a 6 3/4 inch AutoTrak Curve (Directional and Gamma Ray) tool behind an 8 1/2 inch bit and rotary steerable assembly from 1859 feet MD (1854.55 feet TVD) to 16441 feet MD (6935.96 feet TVD).
- 2 Depth measurements were obtained from a depth control system not supplied or operated by Baker Hughes. Due to this lack of control by Baker Hughes logging engineers, depth calibrations and measurements could not be independently verified and the unverified depths as supplied to Baker Hughes are being used to represent logging data.

Remarks

Number	Measured Depth (ft)	Hole Section (in)	Run No.	Remark
1	11491.00	8.500	2	The interval between 11483 feet MD (6943.96 feet TVD) to 11500 feet MD (6943.93 feet TVD) was logged up to 15.5 hours after being drilled due to a trip out of the hole to lay down a lateral hole assembly and to pick up a new lateral hole assembly



Company

Well

Interval

Created

Noble Energy

Moser H34-735

Date From:

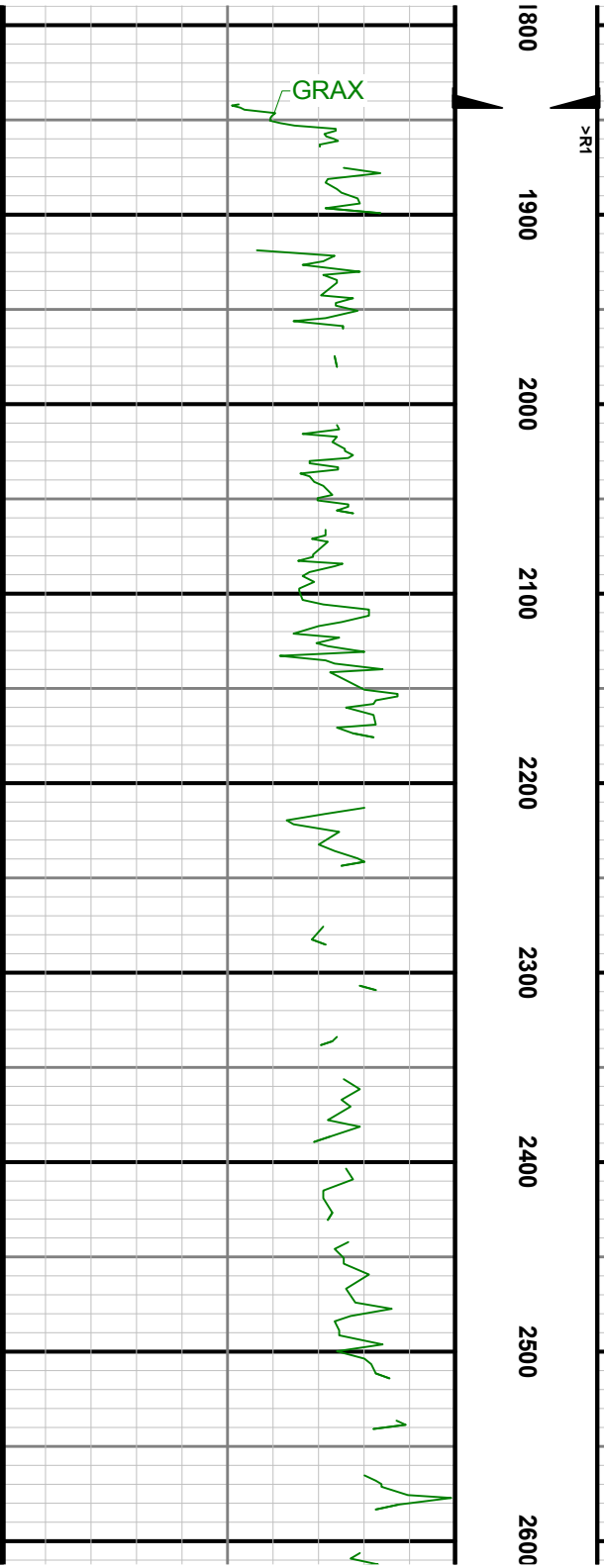
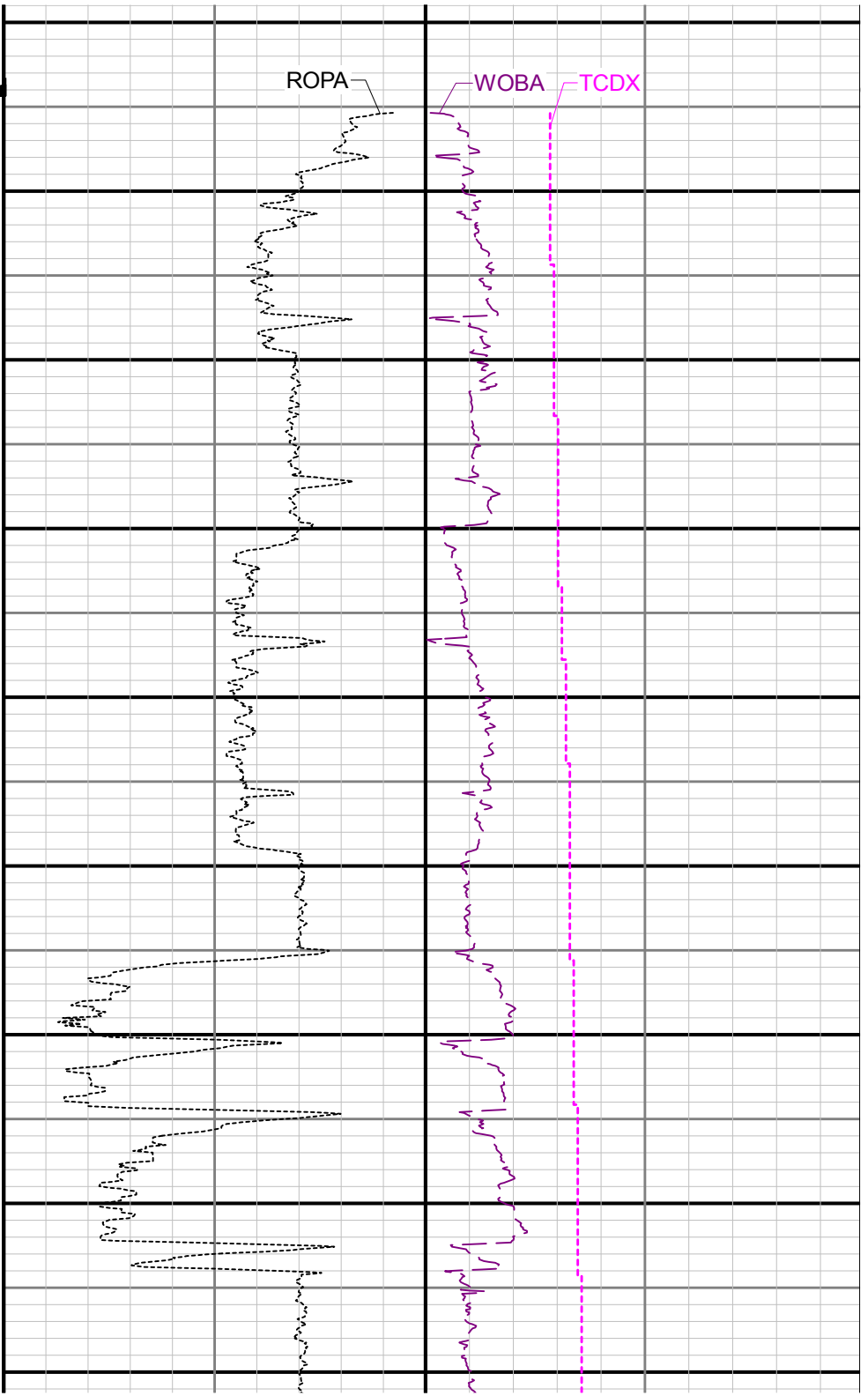
Date To:

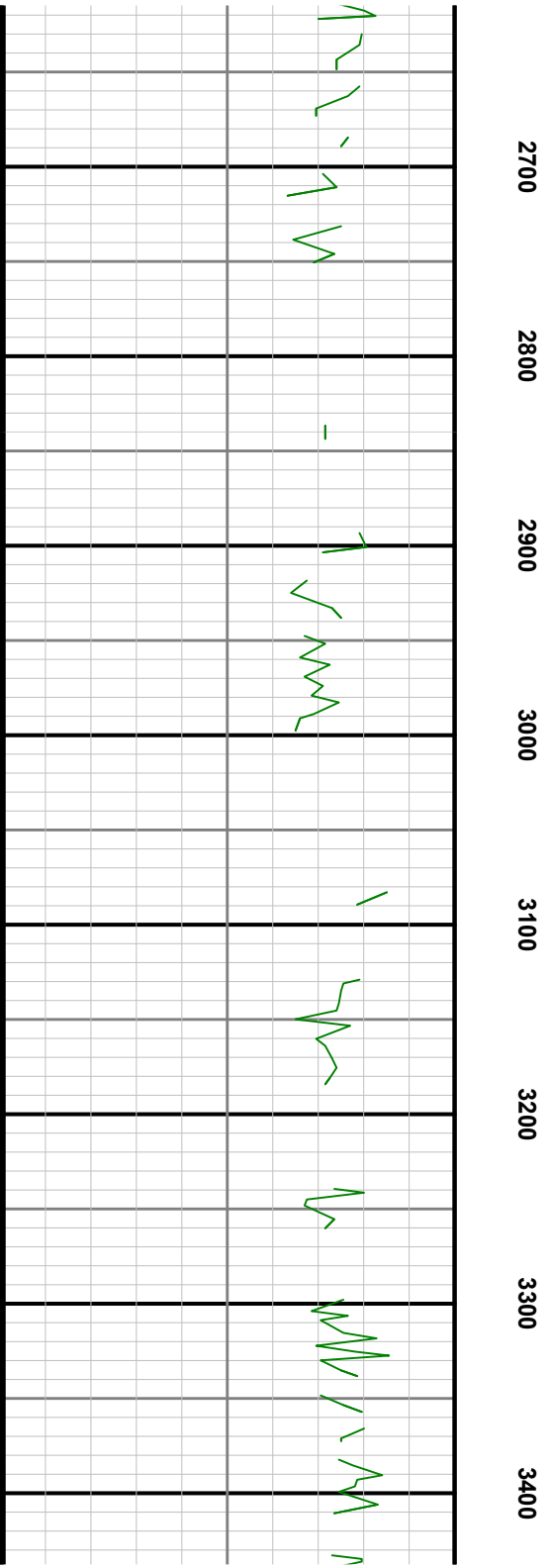
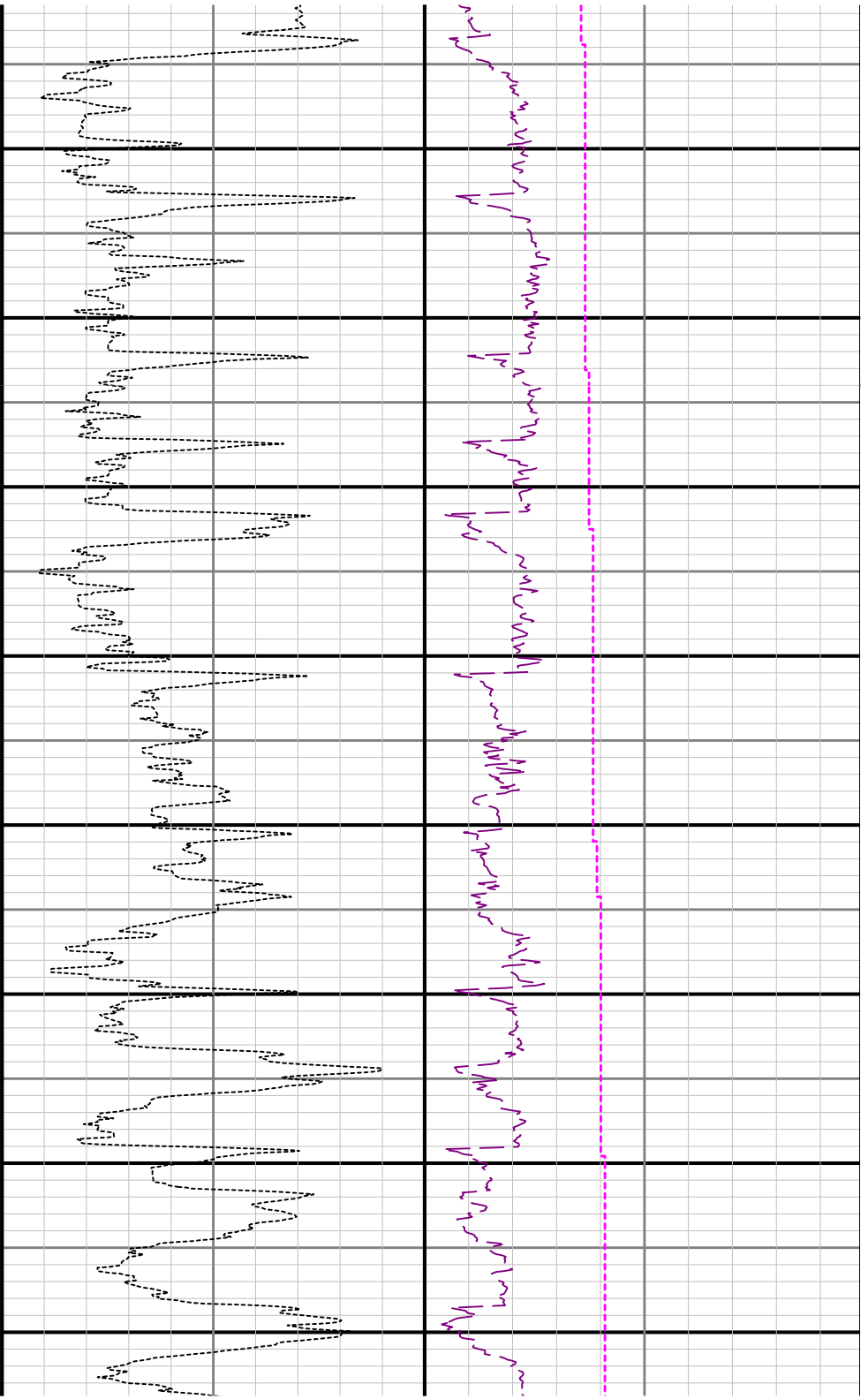
2015-12-23 08:35

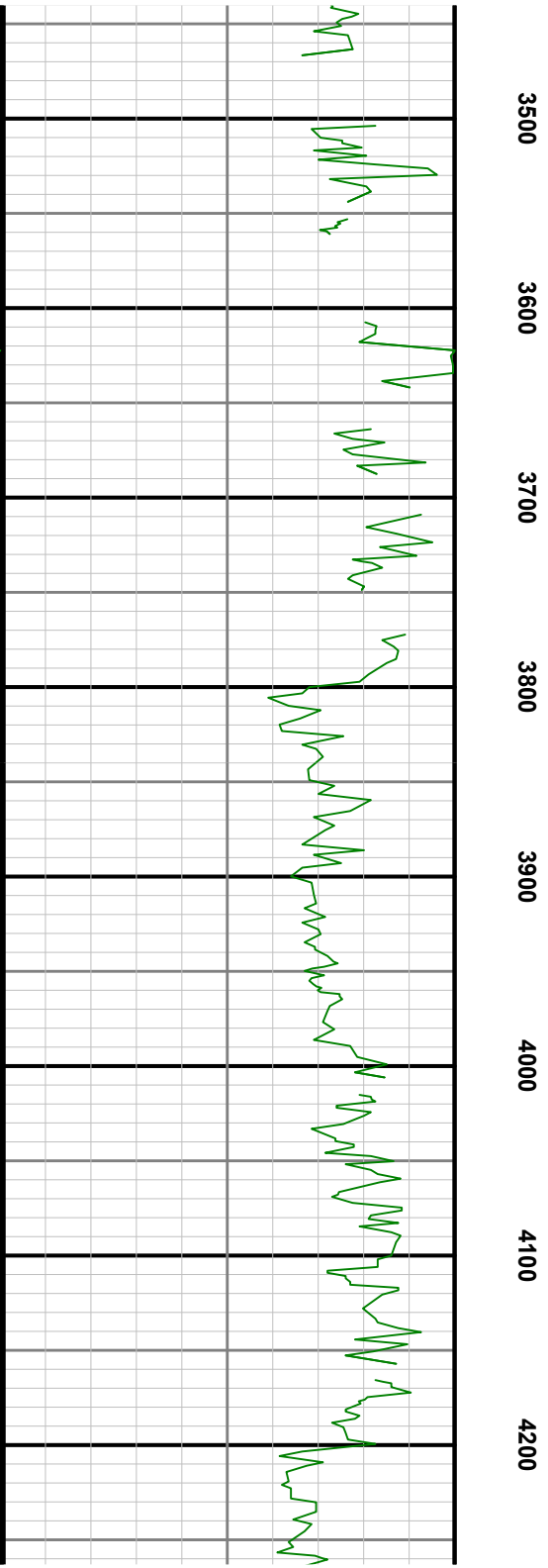
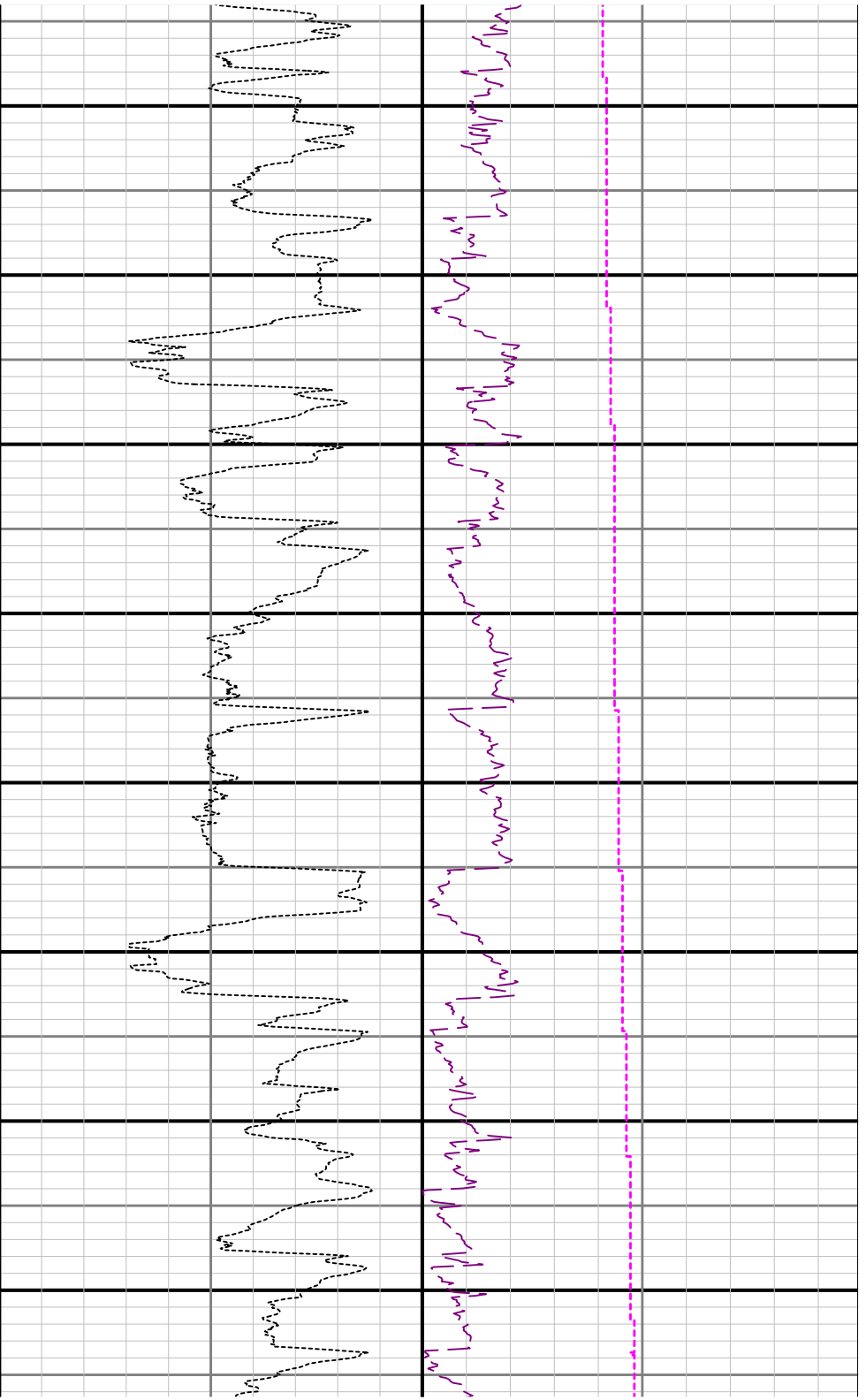
Top:

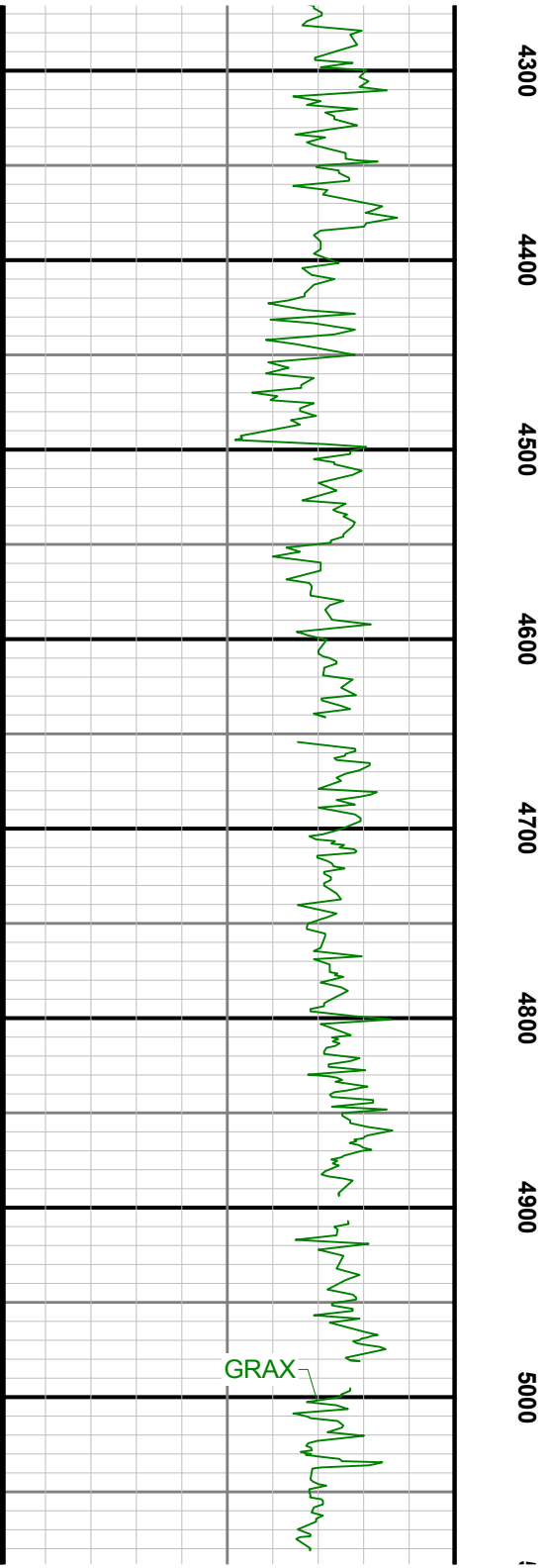
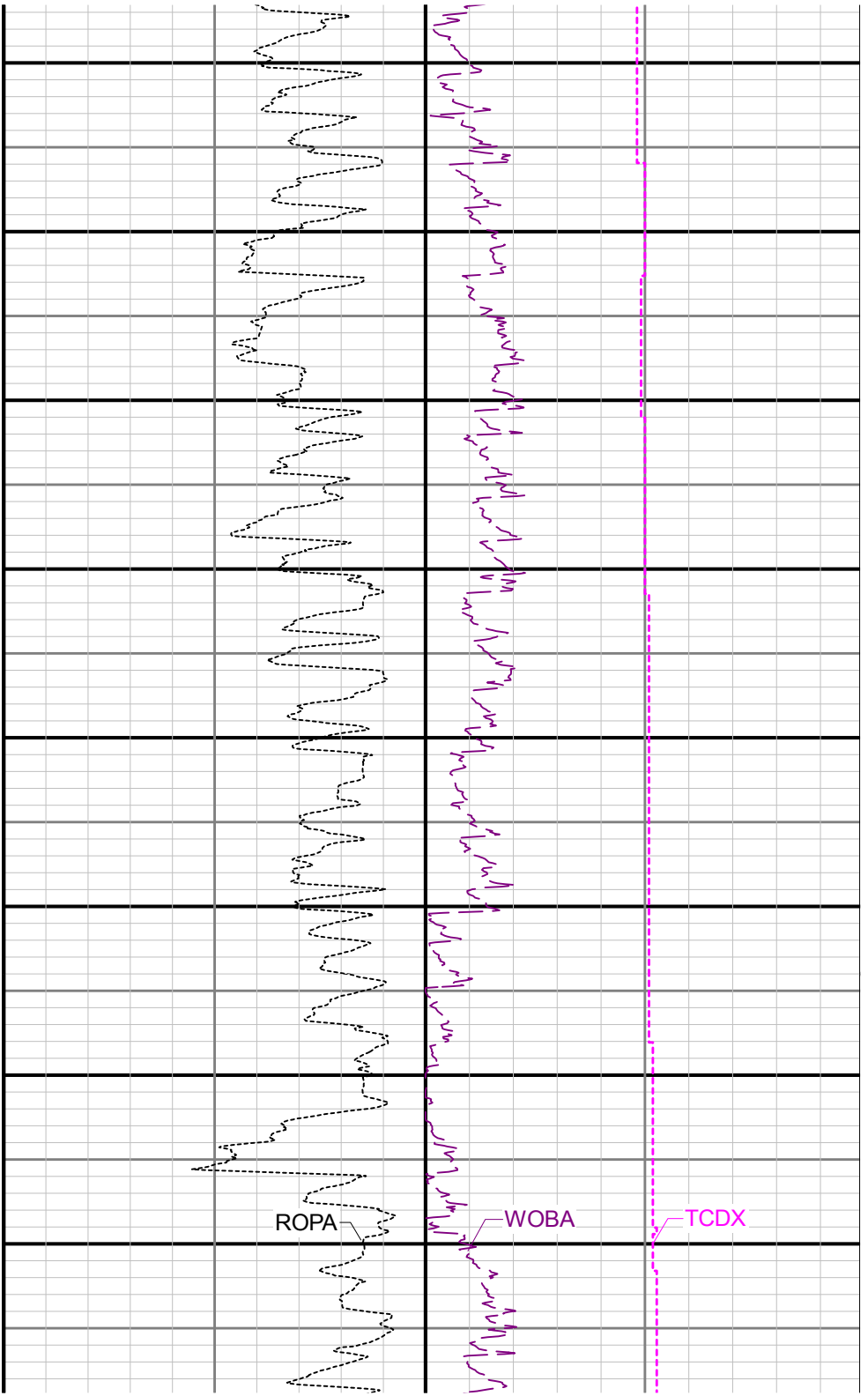
Bottom:

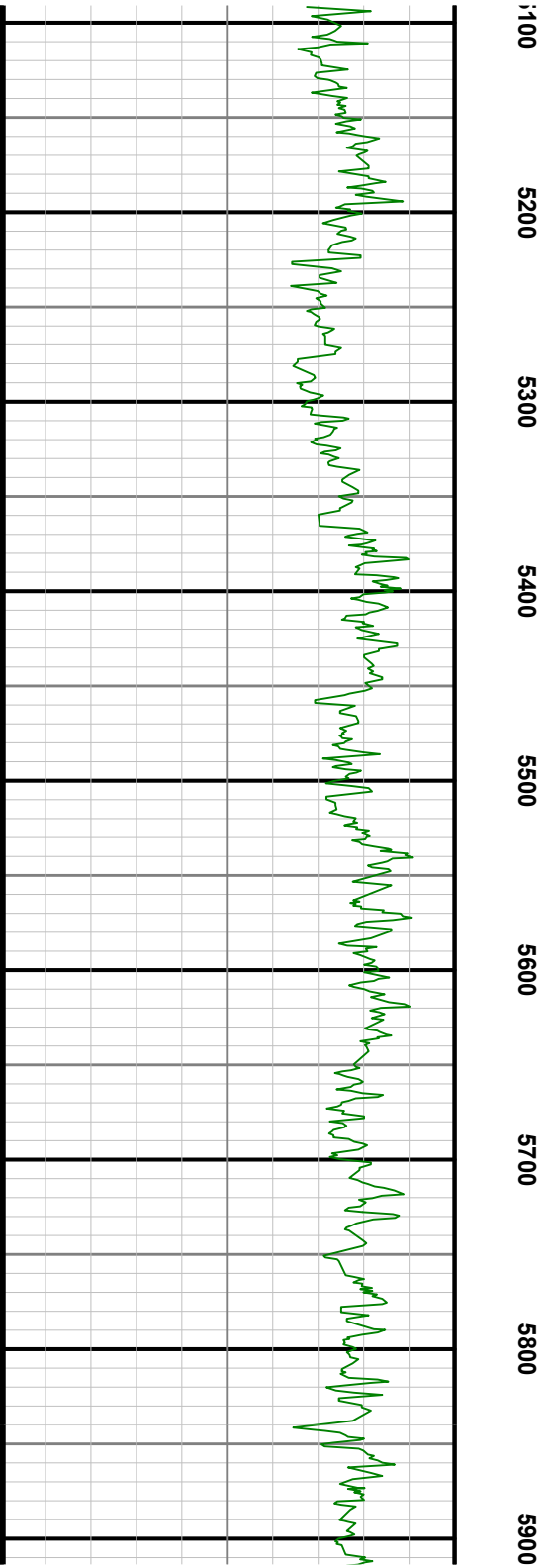
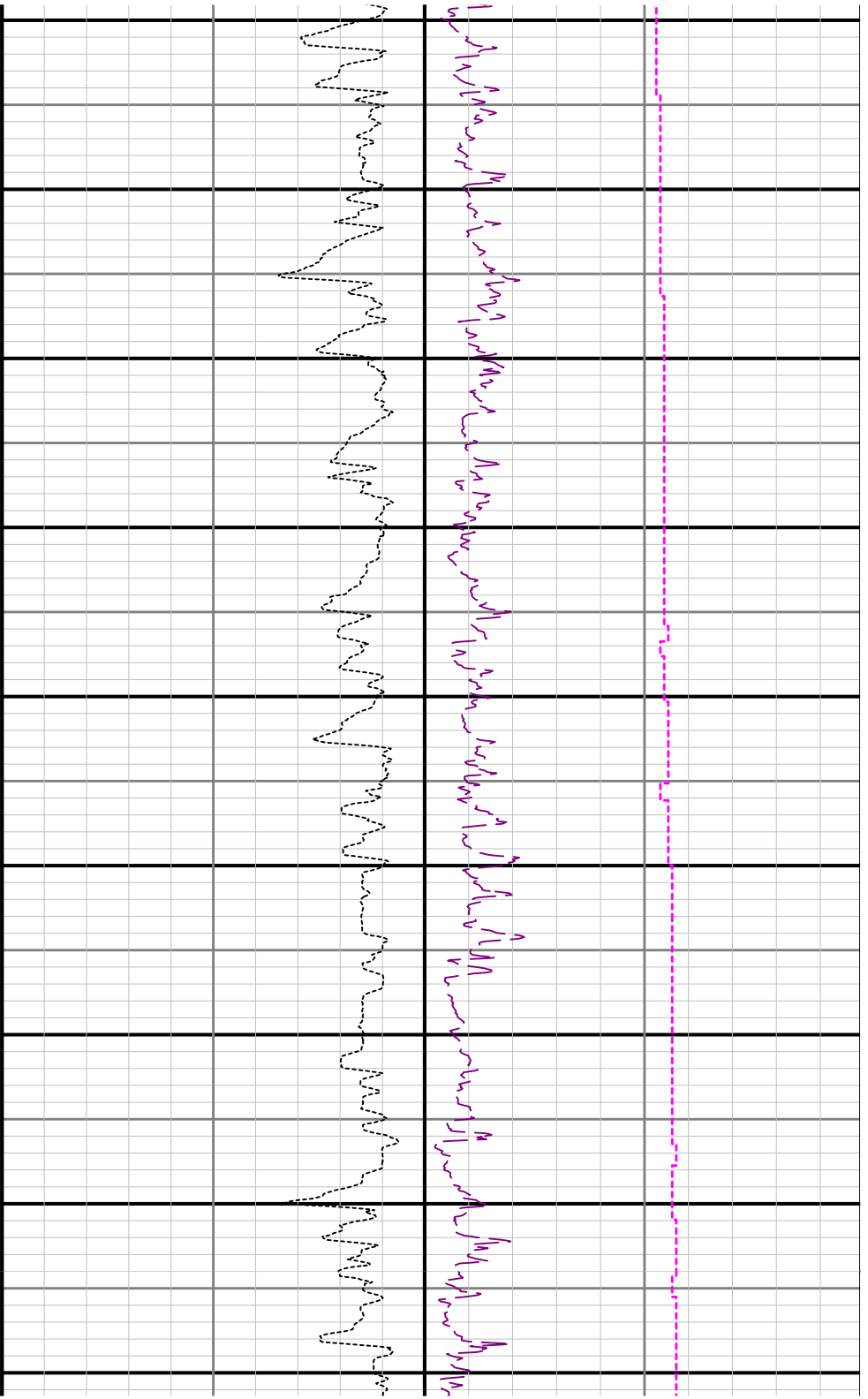
Gamma Ray Apparent 3 ft Average GRAX 0150										TVD 1:1200 feet	Rate of Penetration 3 ft Average ROPA 10000										Surface Weight On Bit 1 ft Average WOBA 0100									
API											ft/h	klb																		
Gamma Ray - Apparent 3 ft Average GRAM 0150												Downhole Temperature TCDX 0300																		
API												Downhole Temperature TCDM 0300																		
										1700																				

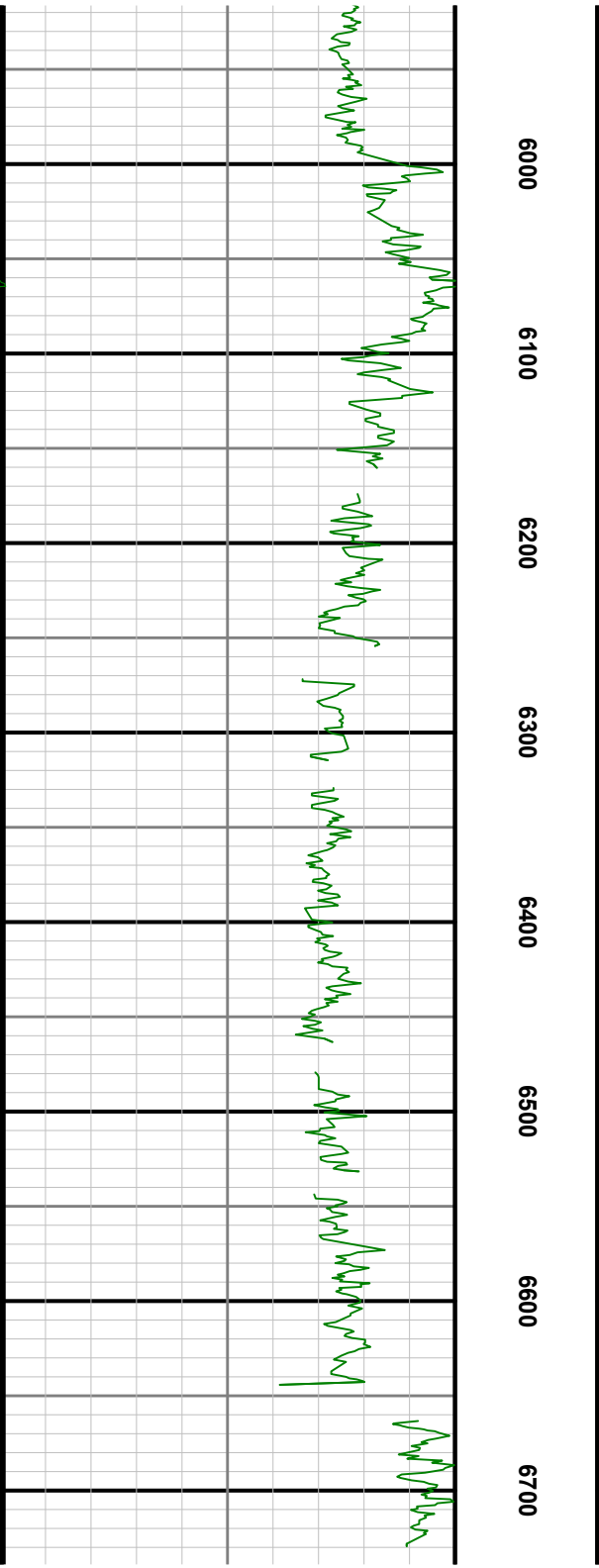
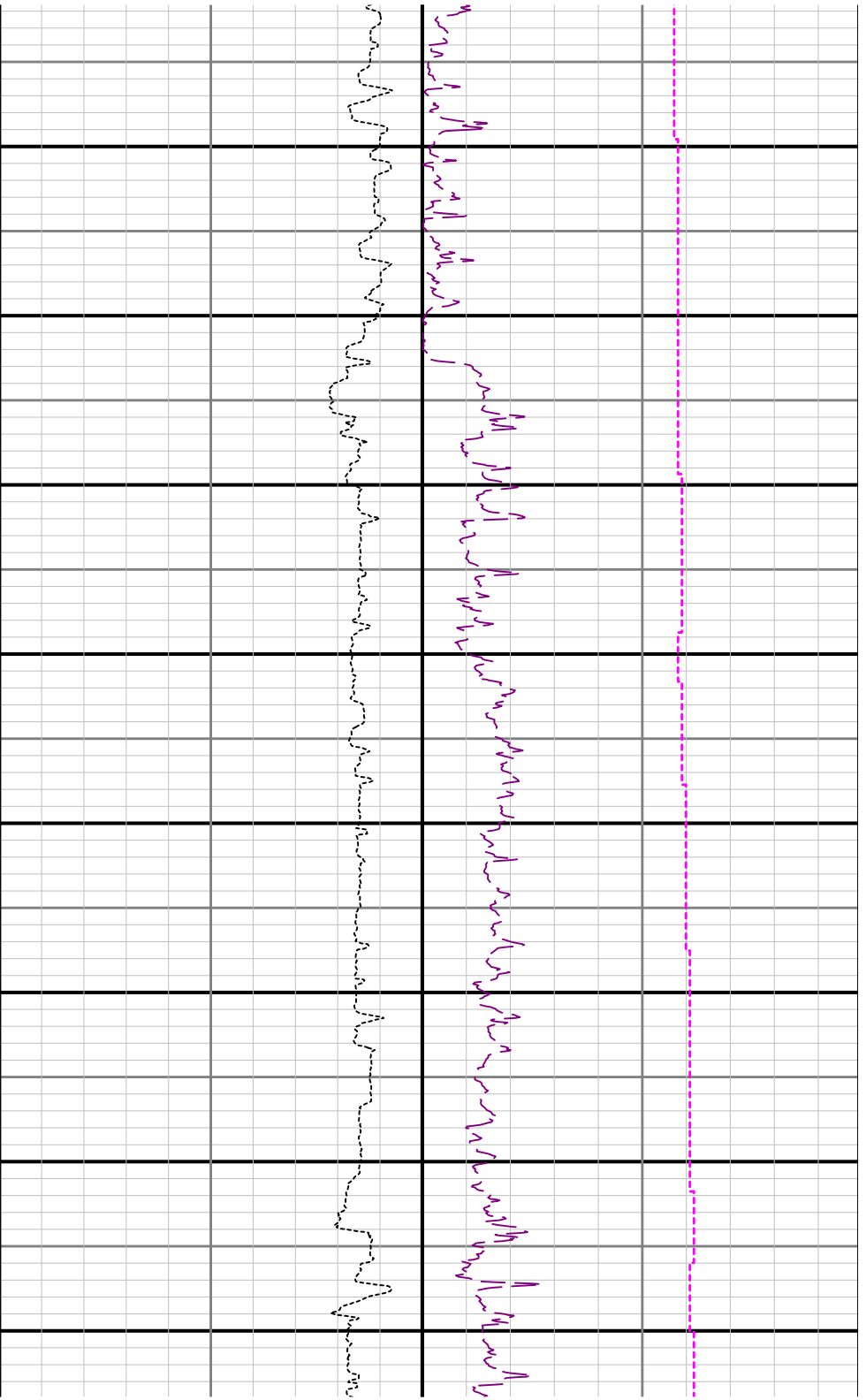












	2522.00	4.01	267.19	106.8	45.16	61.65	2516.75	-42.94	95.00	0.10	-0.09	-0.55
	2616.00	5.91	266.60	106.8	44.71	53.54	2610.40	-42.78	94.00	2.02	2.02	-0.63
	2711.00	6.90	269.61	109.5	44.38	42.95	2704.80	-42.83	95.00	1.10	1.04	3.17
	2805.00	6.73	272.76	109.5	44.61	31.80	2798.14	-43.45	94.00	0.44	-0.18	3.35
	2900.00	8.58	276.77	114.9	45.72	19.20	2892.29	-45.00	95.00	2.03	1.95	4.22
	2994.00	8.62	280.53	114.9	47.83	5.31	2985.23	-47.61	94.00	0.60	0.04	4.00
	3089.00	8.39	292.25	114.9	51.75	-8.10	3079.20	-52.01	95.00	1.84	-0.24	12.34
	3184.00	8.51	298.45	120.3	57.73	-20.70	3173.17	-58.43	95.00	0.97	0.13	6.53
	3278.00	9.02	302.10	120.3	64.96	-33.06	3266.07	-66.09	94.00	0.80	0.54	3.88
	3373.00	9.18	306.97	123.0	73.47	-45.42	3359.87	-75.04	95.00	0.83	0.17	5.13
	3468.00	7.43	318.44	123.0	82.63	-55.55	3453.88	-84.55	95.00	2.53	-1.84	12.07
	3562.00	7.22	337.27	125.7	92.62	-61.87	3547.13	-94.77	94.00	2.55	-0.22	20.03
	3657.00	5.37	347.70	131.1	102.47	-65.12	3641.55	-104.73	95.00	2.28	-1.95	10.98
	3751.00	2.32	332.42	131.1	108.46	-66.94	3735.33	-110.77	94.00	3.39	-3.24	-16.26
	3846.00	0.07	21.09	131.1	110.22	-67.81	3830.31	-112.56	95.00	2.39	-2.37	51.23
	3941.00	0.09	275.89	133.8	110.28	-67.86	3925.31	-112.63	95.00	0.13	0.02	-110.74
	4035.00	0.03	106.75	136.5	110.28	-67.91	4019.31	-112.63	94.00	0.13	-0.06	-179.94
	4130.00	0.13	119.57	141.9	110.22	-67.79	4114.31	-112.56	95.00	0.11	0.11	13.49
	4225.00	0.04	170.59	144.6	110.14	-67.69	4209.31	-112.48	95.00	0.12	-0.09	53.71
	4319.00	0.13	354.60	144.6	110.21	-67.70	4303.31	-112.55	94.00	0.18	0.10	-187.22
	4414.00	0.07	139.35	147.3	110.27	-67.67	4398.31	-112.61	95.00	0.20	-0.06	152.37
	4509.00	0.11	316.83	150.0	110.29	-67.70	4493.31	-112.63	95.00	0.19	0.04	186.82
	4604.00	0.10	236.80	150.0	110.32	-67.83	4588.31	-112.66	95.00	0.14	-0.01	-84.24
	4698.00	0.19	11.15	152.7	110.42	-67.87	4682.31	-112.77	94.00	0.29	0.10	142.93
	4793.00	0.06	67.79	152.7	110.60	-67.79	4777.31	-112.94	95.00	0.17	-0.14	59.62
	4888.00	0.11	35.09	155.4	110.69	-67.69	4872.31	-113.03	95.00	0.07	0.05	-34.42
	4982.00	0.15	108.32	158.1	110.73	-67.52	4966.31	-113.06	94.00	0.17	0.04	77.90
	5077.00	0.11	205.99	158.1	110.60	-67.44	5061.30	-112.94	95.00	0.21	-0.04	102.81
	5172.00	0.19	253.13	160.8	110.48	-67.63	5156.30	-112.81	95.00	0.15	0.08	49.62
	5266.00	0.25	259.36	163.5	110.39	-67.99	5250.30	-112.74	94.00	0.07	0.06	6.63
	5361.00	0.28	303.28	163.5	110.48	-68.38	5345.30	-112.85	95.00	0.21	0.03	46.23
	5456.00	0.19	326.89	166.2	110.74	-68.66	5440.30	-113.12	95.00	0.14	-0.09	24.85
	5551.00	0.44	321.75	160.8	111.16	-68.97	5535.30	-113.55	95.00	0.26	0.26	-5.41
	5645.00	0.44	311.22	168.9	111.68	-69.47	5629.30	-114.08	94.00	0.09	0.00	-11.20
	5740.00	0.69	325.37	168.9	112.39	-70.07	5724.29	-114.82	95.00	0.30	0.26	14.89
	5835.00	0.18	296.30	168.9	112.93	-70.53	5819.29	-115.37	95.00	0.57	-0.54	-30.60
	5929.00	0.07	8.77	171.6	113.05	-70.65	5913.29	-115.50	94.00	0.18	-0.12	77.10
	6024.00	0.13	274.31	174.3	113.12	-70.75	6008.29	-115.56	95.00	0.16	0.06	-99.43
	6119.00	0.54	196.96	174.3	112.70	-70.99	6103.29	-115.15	95.00	0.55	0.43	-81.42
	6214.00	7.83	187.97	N/A	105.85	-72.02	6197.97	-108.35	95.00	7.68	7.67	-9.46
	6308.00	13.39	184.05	N/A	88.64	-73.68	6290.33	-91.21	94.00	5.96	5.91	-4.17
	6403.00	17.26	180.21	N/A	63.56	-74.50	6381.94	-66.18	95.00	4.21	4.07	-4.04
	6497.00	21.78	175.26	N/A	32.22	-73.11	6470.52	-34.80	94.00	5.12	4.81	-5.27
	6592.00	27.66	173.76	N/A	-7.30	-69.26	6556.77	4.83	95.00	6.22	6.19	-1.58
	6687.00	34.04	172.36	N/A	-55.62	-63.32	6638.29	53.33	95.00	6.76	6.72	-1.47
	6781.00	40.88	171.41	N/A	-112.18	-55.22	6712.86	110.14	94.00	7.30	7.28	-1.01
	6876.00	48.67	173.82	N/A	-178.49	-46.72	6780.25	176.71	95.00	8.39	8.20	2.54
	6971.00	56.20	176.39	N/A	-253.46	-40.39	6838.14	251.86	95.00	8.21	7.93	2.71
	7066.00	64.78	177.79	N/A	-335.95	-36.24	6884.89	334.45	95.00	9.12	9.03	1.47
	7161.00	74.10	178.00	N/A	-424.74	-32.98	6918.22	423.30	95.00	9.81	9.81	0.22
	7255.00	83.84	178.92	N/A	-516.86	-30.51	6936.18	515.45	94.00	10.41	10.36	0.98
	7350.00	89.90	179.75	N/A	-611.67	-29.41	6941.36	610.23	95.00	6.44	6.38	0.87
	7445.00	90.08	178.82	N/A	-706.66	-28.23	6941.38	705.21	95.00	1.00	0.19	-0.98
	7539.00	90.20	177.32	N/A	-800.60	-25.06	6941.15	799.20	94.00	1.60	0.13	-1.60
	7634.00	90.05	177.32	N/A	-895.50	-20.62	6940.94	894.20	95.00	0.16	-0.16	0.00

	7729.00	89.68	177.49	N/A	-990.40	-16.32	6941.17	989.19	95.00	0.43	-0.39	0.18
	7824.00	89.74	177.71	N/A	-1085.32	-12.34	6941.65	1084.19	95.00	0.24	0.06	0.23
	7918.00	89.77	178.71	N/A	-1179.27	-9.41	6942.05	1178.19	94.00	1.06	0.03	1.06
	8013.00	90.11	178.62	N/A	-1274.24	-7.19	6942.15	1273.18	95.00	0.37	0.36	-0.09
	8108.00	90.02	177.86	N/A	-1369.20	-4.27	6942.04	1368.18	95.00	0.81	-0.09	-0.80
	8203.00	89.74	177.45	N/A	-1464.12	-0.39	6942.24	1463.17	95.00	0.52	-0.29	-0.43
	8297.00	89.74	177.13	N/A	-1558.01	4.06	6942.67	1557.17	94.00	0.34	0.00	-0.34
	8392.00	89.68	175.44	N/A	-1652.81	10.21	6943.15	1652.12	95.00	1.78	-0.06	-1.78
	8487.00	89.74	176.61	N/A	-1747.57	16.80	6943.63	1747.06	95.00	1.23	0.06	1.23
	8582.00	90.11	177.72	N/A	-1842.46	21.50	6943.75	1842.05	95.00	1.23	0.39	1.17
	8677.00	89.96	178.12	N/A	-1937.39	24.94	6943.70	1937.05	95.00	0.45	-0.16	0.42
	8771.00	90.02	177.34	N/A	-2031.32	28.67	6943.71	2031.05	94.00	0.83	0.06	-0.83
	8866.00	90.02	177.68	N/A	-2126.23	32.79	6943.68	2126.05	95.00	0.36	0.00	0.36
	8961.00	90.02	177.61	N/A	-2221.15	36.70	6943.65	2221.05	95.00	0.07	0.00	-0.07
	9056.00	90.08	177.35	N/A	-2316.06	40.88	6943.56	2316.04	95.00	0.28	0.06	-0.27
	9150.00	90.08	177.92	N/A	-2409.98	44.75	6943.43	2410.04	94.00	0.61	0.00	0.61
	9245.00	89.98	177.58	N/A	-2504.90	48.48	6943.38	2505.04	95.00	0.37	-0.11	-0.36
	9340.00	89.98	177.79	N/A	-2599.83	52.32	6943.41	2600.04	95.00	0.22	0.00	0.22
	9434.00	90.04	178.01	N/A	-2693.76	55.77	6943.40	2694.04	94.00	0.24	0.06	0.23
	9529.00	90.04	175.33	N/A	-2788.59	61.28	6943.33	2789.01	95.00	2.82	0.00	-2.82
	9624.00	89.92	175.75	N/A	-2883.30	68.67	6943.36	2883.92	95.00	0.46	-0.13	0.44
	9718.00	89.89	176.17	N/A	-2977.07	75.29	6943.52	2977.86	94.00	0.45	-0.03	0.45
	9813.00	89.83	176.69	N/A	-3071.89	81.21	6943.75	3072.83	95.00	0.55	-0.06	0.55
	9908.00	89.86	177.15	N/A	-3166.75	86.31	6944.01	3167.81	95.00	0.49	0.03	0.48
	10002.00	90.07	177.36	N/A	-3260.64	90.82	6944.07	3261.81	94.00	0.32	0.22	0.22
	10097.00	90.07	177.70	N/A	-3355.55	94.91	6943.95	3356.80	95.00	0.36	0.00	0.36
	10192.00	89.95	178.48	N/A	-3450.50	98.08	6943.93	3451.80	95.00	0.83	-0.13	0.82
	10286.00	90.01	178.75	N/A	-3544.47	100.35	6943.97	3545.80	94.00	0.29	0.06	0.29
	10381.00	89.86	179.47	N/A	-3639.46	101.82	6944.08	3640.78	95.00	0.77	-0.16	0.76
	10476.00	89.95	178.71	N/A	-3734.45	103.33	6944.23	3735.76	95.00	0.81	0.09	-0.80
	10570.00	89.89	178.68	N/A	-3828.42	105.47	6944.36	3829.75	94.00	0.07	-0.06	-0.03
	10665.00	89.89	178.63	N/A	-3923.39	107.70	6944.55	3924.74	95.00	0.05	0.00	-0.05
	10760.00	89.89	178.29	N/A	-4018.36	110.26	6944.73	4019.74	95.00	0.36	0.00	-0.36
	10854.00	89.92	178.44	N/A	-4112.32	112.94	6944.88	4113.74	94.00	0.16	0.03	0.16
	10949.00	89.98	177.85	N/A	-4207.27	116.01	6944.97	4208.73	95.00	0.62	0.06	-0.62
	11044.00	90.16	177.41	N/A	-4302.19	119.94	6944.85	4303.73	95.00	0.50	0.19	-0.46
	11138.00	90.04	177.30	N/A	-4396.09	124.28	6944.69	4397.73	94.00	0.17	-0.13	-0.12
	11233.00	90.10	177.28	N/A	-4490.98	128.77	6944.57	4492.72	95.00	0.07	0.06	-0.02
	11328.00	90.16	176.75	N/A	-4585.85	133.72	6944.36	4587.71	95.00	0.56	0.06	-0.56
	11422.00	90.16	175.94	N/A	-4679.66	139.71	6944.09	4681.67	94.00	0.86	0.00	-0.86
	11517.00	90.06	176.53	N/A	-4774.46	145.95	6943.91	4776.63	95.00	0.63	-0.11	0.62
	11611.00	89.94	178.08	N/A	-4868.35	150.37	6943.91	4870.62	94.00	1.65	-0.13	1.65
	11706.00	90.00	179.16	N/A	-4963.32	152.66	6943.96	4965.61	95.00	1.14	0.06	1.14
	11801.00	90.00	179.93	N/A	-5058.32	153.41	6943.96	5060.57	95.00	0.81	0.00	0.81
	11895.00	90.03	179.92	N/A	-5152.32	153.53	6943.94	5154.52	94.00	0.03	0.03	-0.01
	11990.00	90.00	179.69	N/A	-5247.32	153.86	6943.91	5249.47	95.00	0.24	-0.03	-0.24
	12085.00	89.88	178.58	N/A	-5342.30	155.29	6944.01	5344.45	95.00	1.18	-0.13	-1.17
	12179.00	89.88	177.24	N/A	-5436.24	158.72	6944.21	5438.44	94.00	1.43	0.00	-1.43
	12274.00	90.55	176.76	N/A	-5531.11	163.69	6943.85	5533.43	95.00	0.87	0.71	-0.51
	12369.00	90.46	176.91	N/A	-5625.96	168.94	6943.01	5628.41	95.00	0.18	-0.09	0.16
	12463.00	90.52	177.56	N/A	-5719.84	173.47	6942.21	5722.39	94.00	0.69	0.06	0.69
	12558.00	90.58	177.39	N/A	-5814.75	177.65	6941.30	5817.39	95.00	0.19	0.06	-0.18
	12653.00	90.49	176.57	N/A	-5909.61	182.66	6940.41	5912.37	95.00	0.87	-0.09	-0.86
	12747.00	90.55	176.20	N/A	-6003.42	188.59	6939.56	6006.33	94.00	0.40	0.06	-0.39
	12842.00	90.55	176.11	N/A	-6098.20	194.96	6938.65	6101.28	95.00	0.09	0.00	-0.09

	12937.00	90.55	177.05	N/A	-6193.03	200.62	6937.73	6196.24	95.00	0.99	0.00	0.99
	13031.00	90.58	178.00	N/A	-6286.93	204.68	6936.81	6290.24	94.00	1.01	0.03	1.01
	13126.00	90.06	178.45	N/A	-6381.89	207.62	6936.28	6385.23	95.00	0.72	-0.55	0.47
	13221.00	90.09	177.88	N/A	-6476.84	210.67	6936.15	6480.23	95.00	0.60	0.03	-0.60
	13315.00	90.00	178.17	N/A	-6570.78	213.91	6936.08	6574.23	94.00	0.32	-0.10	0.31
	13410.00	90.00	177.31	N/A	-6665.71	217.65	6936.08	6669.23	95.00	0.91	0.00	-0.91
	13504.00	90.03	176.53	N/A	-6759.57	222.70	6936.05	6763.21	94.00	0.83	0.03	-0.83
	13598.00	90.06	175.91	N/A	-6853.36	228.90	6935.98	6857.17	94.00	0.66	0.03	-0.66
	13693.00	90.03	176.22	N/A	-6948.14	235.42	6935.91	6952.12	95.00	0.33	-0.03	0.33
	13787.00	90.00	177.46	N/A	-7042.00	240.60	6935.88	7046.10	94.00	1.32	-0.03	1.32
	13882.00	90.03	178.06	N/A	-7136.92	244.31	6935.86	7141.10	95.00	0.63	0.03	0.63
	13976.00	90.06	178.64	N/A	-7230.88	247.02	6935.78	7235.09	94.00	0.62	0.03	0.62
	14071.00	90.00	179.82	N/A	-7325.87	248.30	6935.73	7330.07	95.00	1.24	-0.06	1.24
	14166.00	90.03	180.06	N/A	-7420.87	248.40	6935.71	7425.01	95.00	0.25	0.03	0.25
	14261.00	90.06	179.91	N/A	-7515.87	248.42	6935.63	7519.95	95.00	0.16	0.03	-0.16
	14355.00	89.97	179.04	N/A	-7609.87	249.28	6935.61	7613.92	94.00	0.93	-0.10	-0.93
	14450.00	90.15	177.55	N/A	-7704.82	252.11	6935.51	7708.91	95.00	1.58	0.19	-1.57
	14544.00	90.03	176.85	N/A	-7798.71	256.70	6935.36	7802.91	94.00	0.76	-0.13	-0.74
	14639.00	90.00	175.55	N/A	-7893.50	263.00	6935.34	7897.86	95.00	1.37	-0.03	-1.37
	14734.00	90.00	175.63	N/A	-7988.22	270.30	6935.34	7992.78	95.00	0.08	0.00	0.08
	14829.00	90.06	176.98	N/A	-8083.02	276.42	6935.29	8087.74	95.00	1.42	0.06	1.42
	14923.00	89.97	177.96	N/A	-8176.93	280.57	6935.26	8181.73	94.00	1.05	-0.10	1.04
	15018.00	90.00	178.97	N/A	-8271.89	283.12	6935.29	8276.73	95.00	1.06	0.03	1.06
	15113.00	90.06	179.41	N/A	-8366.88	284.46	6935.24	8371.70	95.00	0.47	0.06	0.46
	15208.00	90.03	179.01	N/A	-8461.87	285.77	6935.16	8466.68	95.00	0.42	-0.03	-0.42
	15302.00	90.09	178.43	N/A	-8555.85	287.87	6935.06	8560.67	94.00	0.62	0.06	-0.62
	15397.00	89.97	178.23	N/A	-8650.81	290.64	6935.01	8655.67	95.00	0.25	-0.13	-0.21
	15492.00	90.00	178.15	N/A	-8745.76	293.64	6935.04	8750.67	95.00	0.09	0.03	-0.08
	15587.00	90.03	176.20	N/A	-8840.64	298.32	6935.01	8845.66	95.00	2.05	0.03	-2.05
	15681.00	90.03	176.27	N/A	-8934.44	304.49	6934.96	8939.61	94.00	0.07	0.00	0.07
	15776.00	90.03	176.87	N/A	-9029.27	310.18	6934.92	9034.58	95.00	0.63	0.00	0.63
	15871.00	89.85	176.91	N/A	-9124.13	315.33	6935.01	9129.57	95.00	0.19	-0.19	0.04
	15965.00	89.88	176.86	N/A	-9217.99	320.44	6935.24	9223.55	94.00	0.06	0.03	-0.05
	16060.00	89.91	176.73	N/A	-9312.84	325.75	6935.41	9318.53	95.00	0.14	0.03	-0.14
	16155.00	89.94	177.32	N/A	-9407.71	330.68	6935.53	9413.52	95.00	0.62	0.03	0.62
	16250.00	89.91	176.84	N/A	-9502.59	335.52	6935.66	9508.51	95.00	0.51	-0.03	-0.51
	16344.00	89.97	176.94	N/A	-9596.45	340.62	6935.76	9602.49	94.00	0.12	0.06	0.11
	16417.00	89.85	177.25	N/A	-9669.35	344.32	6935.87	9675.48	73.00	0.46	-0.16	0.42
Projection	16441.00	89.85	177.25	N/A	-9693.33	345.47	6935.93	9699.48	24.00	0.00	0.00	0.00