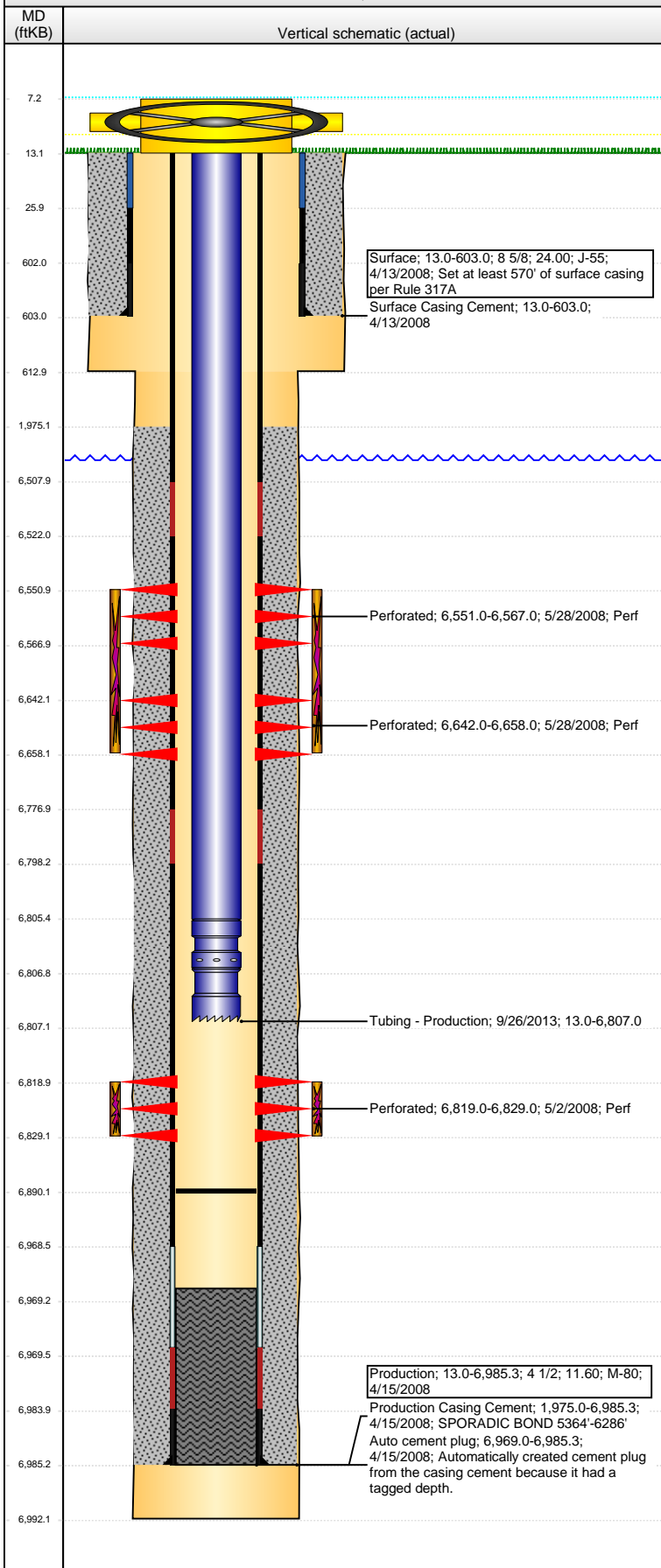


Well Name: WELLS RANCH USX AA23-14

VERTICAL - ORIGINAL HOLE, 3/11/2016 2:18:39 PM



Well Header

API	Business Unit	District	Well Config
05-123-25725	DJ BASIN	15	VERTICAL
Original KB Elevation (ft)	KB - GL / MSL (ftKB)	Spud Date	P & A Date
4,828	13.00	4/12/2008	

Comment

Directions To Well

WR USX AA23-14: WCR 68 & 67, E .2, S 1.75, E .75, N 1, SE INTO LOCATION.

Congressional Location

Quarter 1	Quarter 2	Quarter 3	Quarter 4	Section	Township	Twtnshp N...	Range	Rng E/W Dir
		SE	SW	23	6	N	63	W

Bottom Hole Location

North-South Distance (ft)	From N or S Line	East-West Distance (ft)	From E or W Line

Plug Back Total Depths

Date	Depth (ftKB)	Method	Com
4/15/2008	6,969.0	CASING TALLY	ORIGINAL PBTD
5/1/2008	6,950.0	CASED HOLE LOG	DEPTH LOGGER ON CBL
6/4/2008	6,942.0	TUBING TALLY	TAGGED FILL
5/10/2012	6,960.0	TUBING TALLY	TAGGED FILL
6/21/2013	6,956.0	TAG	DID NOT TAG WITH 150' BELOW EOT LEAVING 1...
9/26/2013	6,890.0	TAG	CHASE CBP TO BOTTOM

Wellbore Sections

Section Des	Size (in)	Act Top, MD (ftKB)	Act Btm, MD (ftKB)
SURFACE	12 1/4	13.0	613.0
PRODUCTION	7 7/8	613.0	6,992.0

Zone Statuses

Zone Name	Status Date	Status	Fluid Type	Job	Prod Method
CODELL	6/10/2008	PR		DRILLING/CO...	
NIOBRARA	5/30/2008	PR		DRILLING/CO...	

Casing Strings

Surface, 603.0ftKB

Casing Description	Run Date	OD (in)	Wt/Len (l...)	Grade	Top, MD (ft...)	MD (ftKB)
Surface	4/13/2008	8 5/8	24.00	J-55	13.0	603.0

Production, 6,985.3ftKB

Casing Description	Run Date	OD (in)	Wt/Len (l...)	Grade	Top, MD (ft...)	MD (ftKB)
Production	4/15/2008	4 1/2	11.60	M-80	13.0	6,985.3

Cement

Description	Top Depth (ftKB)	Bottom Depth (ftKB)
Surface Casing Cement	13.0	603.0
Description	Top Depth (ftKB)	Bottom Depth (ftKB)
Production Casing Cement	1,975.0	6,985.3

Tubing Strings

Tubing Description	Run Date	String...	ID (in)	Wt (lb/ft)	Grade	Len (ft)	Set De...
Tubing - Production	6/5/2008	2 3/8	1.995	4.70	J-55	2,793.99	6,808.9
Tubing Description	Run Date	String...	ID (in)	Wt (lb/ft)	Grade	Len (ft)	Set De...
Tubing - Production	5/14/2012	2 3/8	1.995	4.70	J-55	6,793.60	6,806.2
Tubing Description	Run Date	String...	ID (in)	Wt (lb/ft)	Grade	Len (ft)	Set De...
Tubing - Production	9/26/2013	2 3/8	1.995	4.70	J-55	6,794.05	6,806.7

Tubing Components

Item Des	OD (in)	Wt (lb/ft)	Grade	Jts	Len (ft)	Btm (ftKB)	Btm (TVD) (ftKB)
Tubing	2 3/8	4.70	J-55	220	6,792.45	6,805.5	
Pump Seating Nipple	2 3/8	1.10		1	1.20	6,806.7	6,806.3
Notched collar	2 3/8			1	0.40	6,807.1	6,806.7

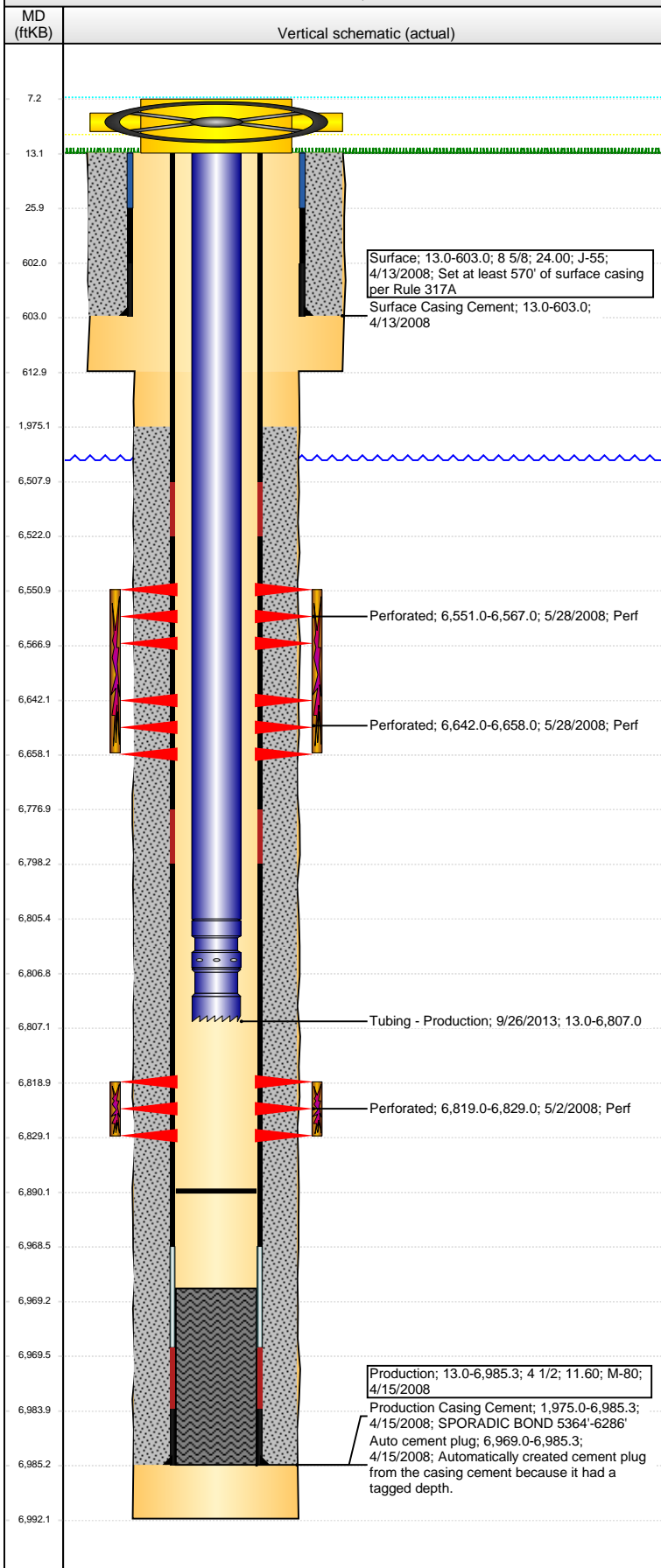
Perforation Data

Zone	Bnch/St g	Entered Shot Total	Top (ftKB)	Btm (ftKB)	Date
NIOBRARA, ORIGINAL HOLE	A	64	6,551.00	6,567.00	5/28/2008
NIOBRARA, ORIGINAL HOLE	B	64	6,642.00	6,658.00	5/28/2008
CODELL, ORIGINAL HOLE		40	6,819.00	6,829.00	5/2/2008

Well Name: WELLS RANCH USX AA23-14

VERTICAL - ORIGINAL HOLE, 3/11/2016 2:18:41 PM

Stimulations & Treatments



Date	Zone	Primary Job Type
5/28/2008	CODELL, ORIGINAL HOLE	DRILLING/COMPLETION - ORIGINAL

Technical Result	Tech Result Details	Tech Result Note
Success	According to Plan	

Comment
CODELL WAS HAVING NEAR WELL BORE ISSUES WENT FROM SILVERSTIM 32# TO 34# GEL AND RAN A WELL BORE OF X-LINKED PAD AND THEN A WELL BORE OF 0.5 PSA AND THEN BACK TO X-LINKED PAD DROPPED RATE DUE TO NOLTE GOING NEGATIVE WW WENT BACK TO THE SAME RATE AS THE OTHER CONCURRENT FRAC JOB ALSO SWAPPED BACK TO SILVERSTIM 32# GEL TREATMENT WENT WELL POST JOB 5 MINUTE OF 3028 PSI

Date	Zone	Primary Job Type
5/28/2008	NIOBRARA, ORIGINAL HOLE	DRILLING/COMPLETION - ORIGINAL

Technical Result	Tech Result Details	Tech Result Note
Success	According to Plan	

Comment
NIOBRARA TREATMENT WENT WELL WITH NO ISSUES TO REPORT RAISED THE FRW LOADING FROM A 1GPM TO 1.5 GPM POST JOB 5 MINUTE 3084 PS

Other In Hole

Run Date	Des	OD (in)	Top (ftKB)	Btm (ftKB)

Logs

Date	Type	Top, MD (ftKB)	Btm, MD (ftKB)
4/15/2008	Caliper/Comp. Density/Neutron/GR/SP/ML	2,800.0	6,990.0
4/15/2008	DIL/GR/SP/Caliper	603.0	6,990.0
5/1/2008	CBL/CCL/GR	1,900.0	6,943.0
3/26/2013	GYRO	13.0	6,800.0