

Miller 9 Pad

Ray Miller Lease (CO 10284)
T. 6 S., R. 91 W. 6th P.M.
Sec. 31; Lots 2-4, SENW

T. 6 S., R. 92 W. 6th P.M.
Sec. 35; E2SE, SENE
Sec. 36; S2NE, S2NW, S2

T. 7 S., R. 91 W. 6th P.M.
Sec. 6; Lots 4-5

857.05 Acres

• Bottom Hole Location

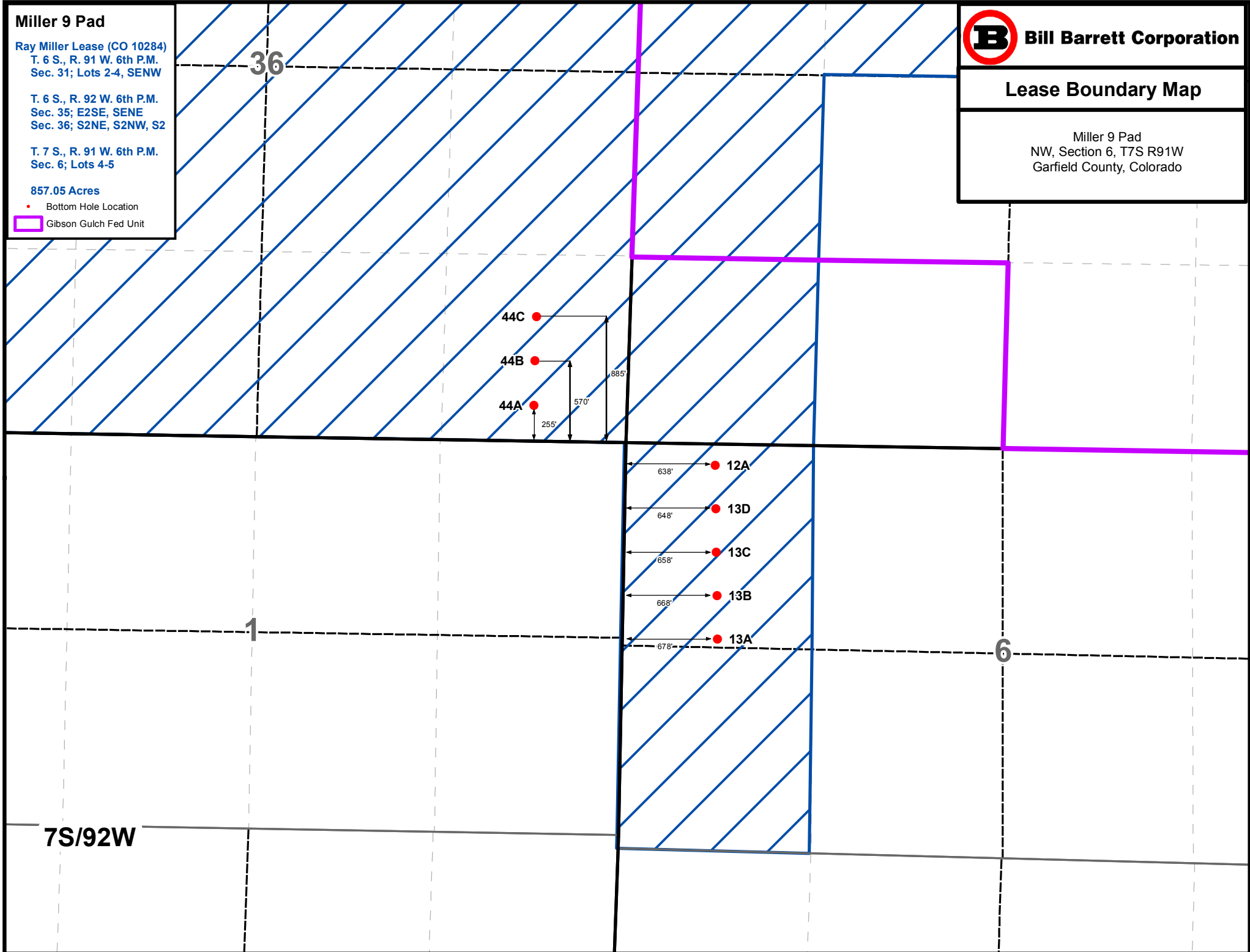
▭ Gibson Gulch Fed Unit



Bill Barrett Corporation

Lease Boundary Map

Miller 9 Pad
NW, Section 6, T7S R91W
Garfield County, Colorado



7S/92W