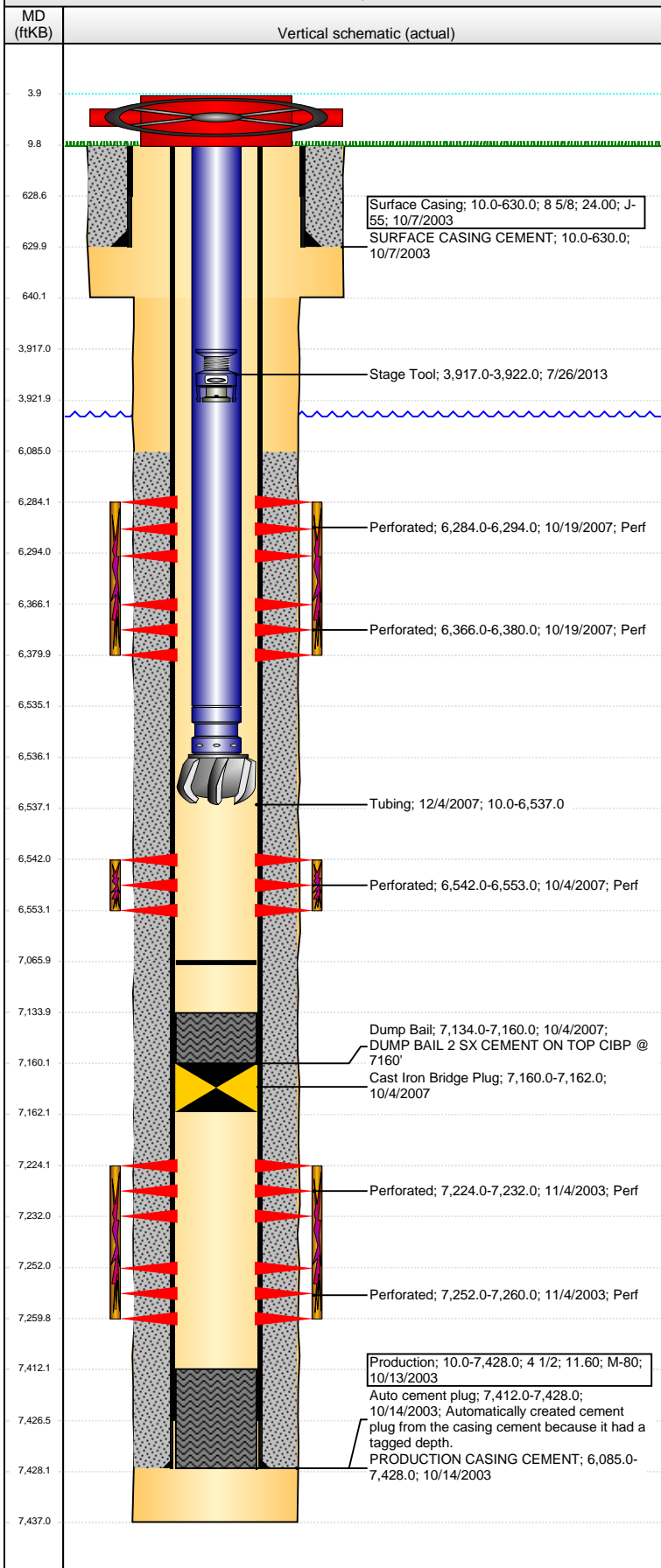


Well Name: HERGENREDER BB32-16D

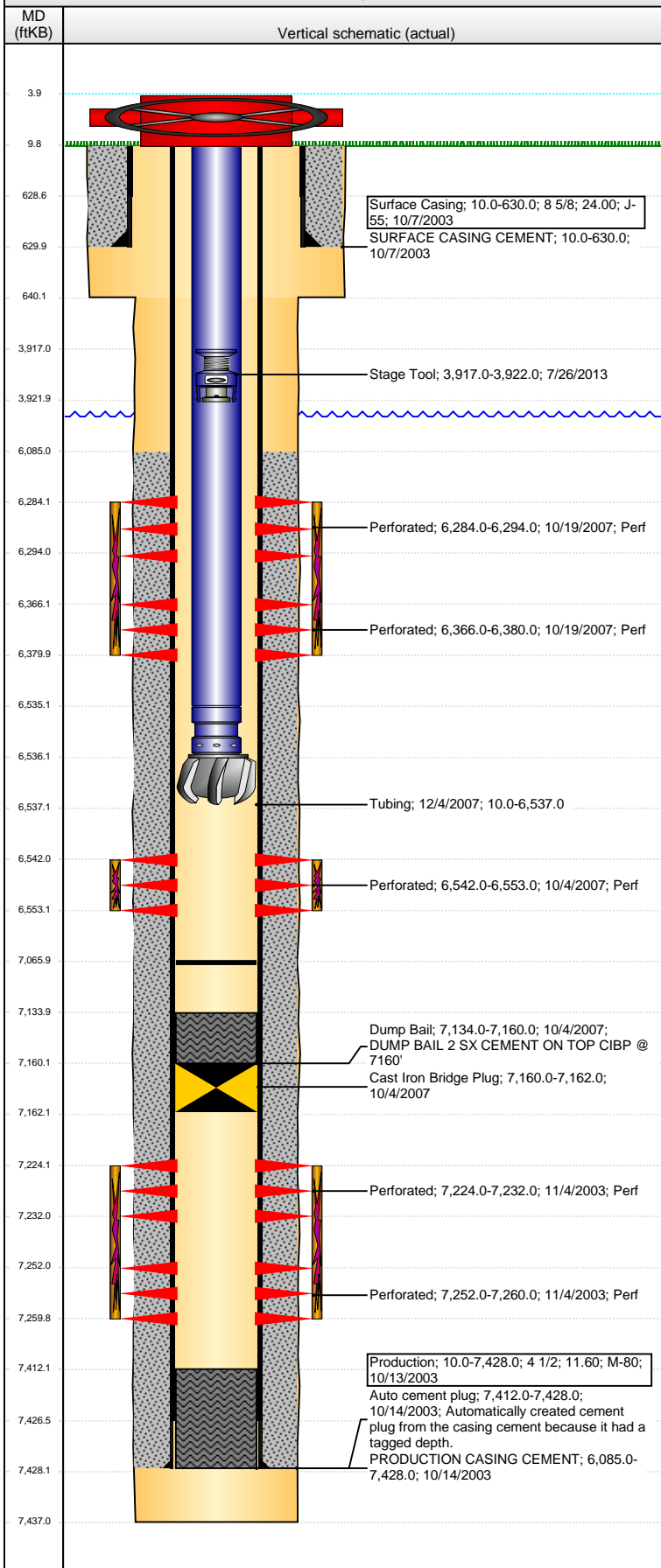
VERTICAL - ORIGINAL HOLE, 4/25/2016 7:24:16 AM



Well Header									
API 05-123-21275		Business Unit DJ BASIN		District 15		Well Config VERTICAL			
Original KB Elevation (ft) 4,580		KB - GL / MSL (ftKB) 10.00		Spud Date 10/6/2003		P & A Date			
Comment CIBP @ 7160' W/ 2X CEMENT									
Directions To Well									
Congressional Location									
Quarter 1	Quarter 2	Quarter 3	Quarter 4	Section	Township	Twnshp N...	Range	Rng E/W Dir	
		SE	SE	32	5	N	63	W	
Bottom Hole Location									
North-South Distance (ft)		From N or S Line		East-West Distance (ft)			From E or W Line		
Plug Back Total Depths									
Date	Depth (ftKB)	Method			Com				
10/13/2003	7,412.0	CASING TALLY			ORIGINAL PBDT, LATCH DOWN BAFFLE				
10/30/2003	7,420.0	CASED HOLE LOG			DEPTH LOGGER				
10/4/2007	7,134.0	TAG			2 SKS CEMENT ON TOP OF CIBP AT 7160'				
12/4/2007	7,066.0	TAG			CHASE CIBP TO 7066'				
Wellbore Sections									
Section Des			Size (in)		Act Top, MD (ftKB)		Act Btm, MD (ftKB)		
SURFACE			12 1/4		10.0		640.0		
PRODUCTION			7 7/8		640.0		7,437.0		
Zone Statuses									
Zone Name	Status Date	Status	Fluid Type		Job	Prod Method			
NIOBRARA	10/21/2007	PR			RECOMPLETI...				
DAKOTA	11/20/2003	PR			DRILLING/CO...				
DAKOTA	10/4/2007	AB			RECOMPLETI...				
CODELL	10/21/2007	PR			RECOMPLETI...				
Casing Strings									
Surface Casing, 630.0ftKB									
Casing Description		Run Date	OD (in)	Wt/Len (l...	Grade	Top, MD (ft...	MD (ftKB)		
Surface Casing		10/7/2003	8 5/8	24.00	J-55	10.0	630.0		
Production, 7,428.0ftKB									
Casing Description		Run Date	OD (in)	Wt/Len (l...	Grade	Top, MD (ft...	MD (ftKB)		
Production		10/13/2003	4 1/2	11.60	M-80	10.0	7,428.0		
Cement									
Description					Top Depth (ftKB)		Bottom Depth (ftKB)		
SURFACE CASING CEMENT					10.0		630.0		
Description					Top Depth (ftKB)		Bottom Depth (ftKB)		
PRODUCTION CASING CEMENT					6,085.0		7,428.0		
Description					Top Depth (ftKB)		Bottom Depth (ftKB)		
Dump Bail					7,134.0		7,160.0		
Tubing Strings									
Tubing Description		Run Date	String...	ID (in)	Wt (lb/ft)	Grade	Len (ft)	Set De...	
Tubing		11/8/2003	2 3/8	1.995	4.70	J-55	7,199.00		
Tubing Description		Run Date	String...	ID (in)	Wt (lb/ft)	Grade	Len (ft)	Set De...	
Tubing		12/4/2007	2 3/8	1.995	4.70	J-55	6,527.00		
Tubing Components									
Item Des		OD (in)	Wt (lb/ft)	Grade	Jts	Len (ft)	Btm (ftKB)	Btm (TVD) (ftKB)	
EUE 8rd Tubing		2 3/8	4.70	J-55	201	6,525.00	6,535.0		
Seal Nipple		2 3/8			1	1.00	6,536.0		
Blade Bit		3 7/8			1	1.00	6,537.0		
Perforation Data									
Zone		Bnch/St g	Entered Shot Total	Top (ftKB)		Btm (ftKB)		Date	
NIOBRARA, ORIGINAL HOLE		A	40	6,284.00		6,294.00		10/19/2007	
NIOBRARA, ORIGINAL HOLE		B	56	6,366.00		6,380.00		10/19/2007	
CODELL, ORIGINAL HOLE			44	6,542.00		6,553.00		10/4/2007	
DAKOTA, ORIGINAL HOLE			32	7,224.00		7,232.00		11/4/2003	
DAKOTA, ORIGINAL HOLE			32	7,252.00		7,260.00		11/4/2003	

Well Name: HERGENREDER BB32-16D

VERTICAL - ORIGINAL HOLE, 4/25/2016 7:24:19 AM



Stimulations & Treatments				
Date	Zone	Primary Job Type		
11/12/2003	DAKOTA, ORIGINAL HOLE	DRILLING/COMPLETION - ORIGINAL		
Technical Result		Tech Result Details		Tech Result Note
Comment				
Date	Zone	Primary Job Type		
10/18/2007	CODELL, ORIGINAL HOLE	RECOMPLETION		
Technical Result		Tech Result Details		Tech Result Note
Comment				
Date	Zone	Primary Job Type		
10/18/2007	NIOBRARA, ORIGINAL HOLE	RECOMPLETION		
Technical Result		Tech Result Details		Tech Result Note
Comment				
Other In Hole				
Run Date	Des	OD (in)	Top (ftKB)	Btm (ftKB)
10/4/2007	Cast Iron Bridge Plug	3.99	7,160.0	7,162.0
7/26/2013	Stage Tool	2	3,917.0	3,922.0
Logs				
Date	Type	Top, MD (ftKB)	Btm, MD (ftKB)	
10/13/2003	COMPENSATED DENSITY	3,300.0	7,417.0	
10/13/2003	INDUCTION	630.0	7,437.0	
10/30/2003	CBL/CCL/GR	5,950.0	7,418.0	