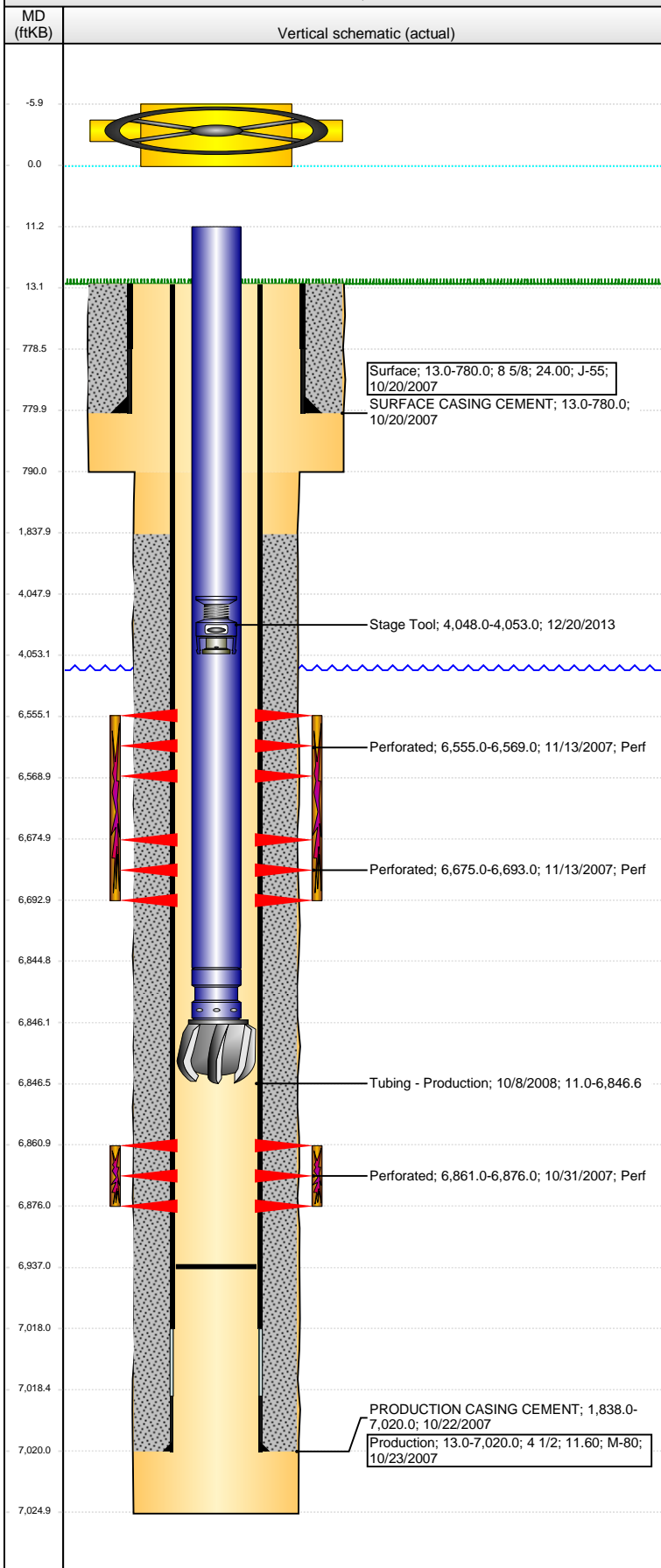


**Well Name: BARTHOL A34-05X**

VERTICAL - ORIGINAL HOLE, 4/21/2016 2:16:40 PM



## Well Header

API	Business Unit	District	Well Config
05-123-26411	DJ BASIN	15	VERTICAL
Original KB Elevation (ft)	KB - GL / MSL (ftKB)	Spud Date	P & A Date
4,672	13.00	10/19/2007	

## Comment

DEVIATED WELL; REDRILL

DISCREPANCY: DR RPT TD 7018; ST RPT TD 7020

NO TUBING INFO IN FILE; INFO ADDED IN ON COMPLETION

## Directions To Well

WCR 55 & WCR 62 1/2, NORTH 0.2, EAST 0.1 INTO

## Congressional Location

Quarter 1	Quarter 2	Quarter 3	Quarter 4	Section	Township	Twnshp N...	Range	Rng E/W Dir
		SW	NW	34	6	N	64	W

## Bottom Hole Location

North-South Distance (ft)	From N or S Line	East-West Distance (ft)	From E or W Line
1,814.0	FNL	546.0	FWL

## Plug Back Total Depths

Date	Depth (ftKB)	Method	Com
10/22/2007	7,005.0	CASING TALLY	
10/7/2008	6,780.0	TUBING TALLY	
10/8/2008	6,937.0	TUBING TALLY	

## Wellbore Sections

Section Des	Size (in)	Act Top, MD (ftKB)	Act Btm, MD (ftKB)
SURFACE	12 1/4	13.0	790.0
PRODUCTION	7 7/8	790.0	7,025.0

## Zone Statuses

Zone Name	Status Date	Status	Fluid Type	Job	Prod Method
CODELL	3/6/2008	PR		DRILLING/CO...	
NIOBRARA	3/6/2008	PR		DRILLING/CO...	

## Casing Strings

### Surface, 780.0ftKB

Casing Description	Run Date	OD (in)	Wt/Len (l...	Grade	Top, MD (ft...	MD (ftKB)
Surface	10/20/2007	8 5/8	24.00	J-55	13.0	780.0

### Production, 7,020.0ftKB

Casing Description	Run Date	OD (in)	Wt/Len (l...	Grade	Top, MD (ft...	MD (ftKB)
Production	10/23/2007	4 1/2	11.60	M-80	13.0	7,020.0

## Cement

Description	Top Depth (ftKB)	Bottom Depth (ftKB)
SURFACE CASING CEMENT	13.0	780.0
Description	Top Depth (ftKB)	Bottom Depth (ftKB)
PRODUCTION CASING CEMENT	1,838.0	7,020.0

## Tubing Strings

Tubing Description	Run Date	String...	ID (in)	Wt (lb/ft)	Grade	Len (ft)	Set De...
Tubing - Production	10/8/2008	2 3/8	1.995	4.70	J-55	6,835.58	

## Tubing Components

Item Des	OD (in)	Wt (lb/ft)	Grade	Jts	Len (ft)	Btm (ftKB)	Btm (TVD) (ftKB)
Tubing	2 3/8	4.70	J-55	221	6,833.93	6,844.9	
Pump Seating Nipple	2 3/8	4.70	J-55	1	1.10	6,846.0	
Bit	3 7/8	4.70	J-55	1	0.55	6,846.6	

## Perforation Data

Zone	Bnch/St g	Entered Shot Total	Top (ftKB)	Btm (ftKB)	Date
NIOBRARA, ORIGINAL HOLE	A	28	6,555.00	6,569.00	11/13/2007
NIOBRARA, ORIGINAL HOLE	B	36	6,675.00	6,693.00	11/13/2007
CODELL, ORIGINAL HOLE		60	6,861.00	6,876.00	10/31/2007

## Stimulations & Treatments

Date	Zone	Primary Job Type
11/13/2007	NIOBRARA, ORIGINAL HOLE	DRILLING/COMPLETION - ORIGINAL
Technical Result	Tech Result Details	Tech Result Note

## Comment

Barthol A 34-5X perf'd with 2 spf, 60 deg, 23 gm, 0.42 ehd, 20.45"pen

**Well Name: BARTHOL A34-05X**

VERTICAL - ORIGINAL HOLE, 4/21/2016 2:16:42 PM

## Stimulations & Treatments

Date 11/13/2007	Zone CODELL, ORIGINAL HOLE	Primary Job Type DRILLING/COMPLETION - ORIGINAL
Technical Result	Tech Result Details	Tech Result Note
Comment		

## Other In Hole

Run Date	Des	OD (in)	Top (ftKB)	Btm (ftKB)
12/20/2013	Stage Tool	2	4,048.0	4,053.0

## Logs

Date	Type	Top, MD (ftKB)	Btm, MD (ftKB)
10/23/2007	Compensated Density	2,550.0	6,981.0
10/23/2007	DIFL/DENS/GR/GRD/CAL	780.0	7,001.0
10/29/2007	CBL/CCL/GR	1,750.0	6,970.0

